

Flow Time	1st Min.	2nd Min.	Date	Ticket Number	Legal Location
15		45	4-10-67	484126 S	Sec. - Twp. - Rng.
Closed In Press. Time	1st Min.	2nd Min.	Kind of Job	Halliburton District	Lease Name
30		30	OPEN HOLE	PRATT	23 34 7
Pressure Readings	Field	Office Corrected	Tester	Witness	Well No.
			M. B. HUNTER	MR. G. W. PITTIN	1
Depth Top Gauge	4685 Ft.	Blanked Off	Drilling Contractor	Top Packer	Field Area
		no	CORBETT DRILLING COMPANY	4697'	1
BT. P.R.D. No.	534	12 Hour Clock	Elevation	Bottom Packer	Test No.
			1362'	4701'	1
Initial Hydro Mud Pressure	2427	2399	Total Depth	Formation Tested	County
			4801'	Mississippi	HARPER
Initial Closed in Pres.	1159	1165	Interval Tested	Casing or Hole Size	Owner's District
			4701' - 4801'	7 7/8"	23-34-3
Initial Flow Pres.	58	1 72	Surface Choke	Bottom Choke	I.D. - LENGTH
	77	2 105			
Final Flow Pres.	77	1 70	1"	3/4"	
	115	2 117			
Final Closed in Pres.	828	828	Size & Kind Drill Pipe	Drill Collars Above Tester	
			4" FH	2.25" - 583'	
Final Hydro Mud Pressure	2367	2368	Mud Weight	Mud Viscosity	
			9.6	53	
Depth Cen. Gauge		Blanked Off	Temperature	Anchor Size & Length	ID 3.37" X OD 5" 100'
			4796' @ 125 °F Actual		
BT. P.R.D. No.		Hour Clock	Depths Mea. From	Depth of Tester Valve	
				4675 Ft.	
Initial Hydro Mud Pres.			Cushion	Depth Back Pres. Valve	
Initial Closed in Pres.			Recovered	225 Feet of	Mea. From Tester Valve
Initial Flow Pres.	1			slight gas cut mud & very slightly oil mud.	
Final Flow Pres.	2		Recovered	Feet of	
	1				
Final Closed in Pres.			Recovered	Feet of	
	2				
Final Hydro Mud Pres.			Oil A.P.I. Gravity	Water Spec. Gravity	
			-	-	
Depth Bot. Gauge	4797 Ft.	Blanked Off	Gas Gravity	Surface Pressure	psi
		yes			
BT. P.R.D. No.	533	12 Hour Clock	Tool Opened	Tool Closed	A.M. P.M. A.M. P.M.
			12:15	1:45 P.M.	
Initial Hydro Mud Pres.	2487	2448	Remarks		
			Opened tool for a 15 minute first flow with a good blow. Took a 30 minute initial closed in pressure. Reopened tool for a 45 minute final flow with a good blow. Closed tool for a 30 minute final closed in pressure. Unable to calculate due to insufficient closures on both CIP's.		
Initial Closed in Pres.	1218	1206			
Initial Flow Pres.	96	1 140			
	134	2 195			
Final Flow Pres.	134	1 132			
	172	2 162			
Final Closed in Pres.	886	871			
Final Hydro Mud Pres.	2447	2414			

FORMATION TEST DATA

CHARLIE CARR
Lease Name
23 34 7
Well No.
1
Test No.
1
J.R. BUTLER
Lease Owner/Company Name
County
HARPER
State
KANSAS
Owner's District
23-34-3

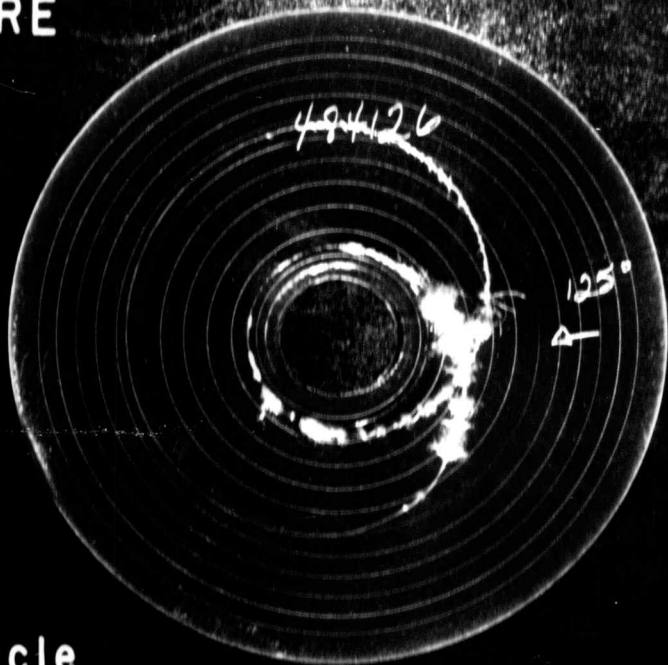
Gauge No. 534		Depth 4685'		Clock 12 hour		Ticket No. 484126				
First Flow Period		Initial Closed In Pressure			Second Flow Period		Final Closed In Pressure			
	Time Defl. .000"	PSIG Temp. Corr.	Time Defl. .000"	Log $\frac{t+\oplus}{\ominus}$	PSIG Temp. Corr.	Time Defl. .000"	PSIG Temp. Corr.	Time Defl. .000"	Log $\frac{t+\oplus}{\ominus}$	PSIG Temp. Corr.
P ₀	.000	72	.000		70	.000	105	.000		117
P ₁	.0204	60	.0213		187	.0608	94	.0206		190
P ₂	.0408	61	.0426		304	.1216	101	.0412		266
P ₃	.0612	64	.0639		419	.1824	106	.0618		342
P ₄	.0816	67	.0852		543	.2432	111	.0824		418
P ₅	.1020	70	.1065		673	.3040	117	.1030		492
P ₆			.1278		789			.1236		566
P ₇			.1491		900			.1442		637
P ₈			.1704		995			.1648		702
P ₉			.1917		1084			.1854		766
P ₁₀			.2130		1165			.2060		828

Gauge No. 533		Depth 4797'		Clock 12 hour						
P ₀	.000	140	.000	132	.000	195	.000	162		
P ₁	.020	110	.0212	252	.0594	143	.0205	234		
P ₂	.040	109	.0424	362	.1188	147	.0410	309		
P ₃	.060	124	.0636	472	.1782	153	.0615	382		
P ₄	.080	131	.0848	596	.2376	157	.0820	461		
P ₅	.100	132	.1060	718	.2970	162	.1025	539		
P ₆			.1272	834			.1230	611		
P ₇			.1484	939			.1435	680		
P ₈			.1696	1035			.1640	745		
P ₉			.1908	1127			.1845	814		
P ₁₀			.2120	1206			.2050	871		
Reading Interval		3	3		9		3		Minutes	
REMARKS:										

SPECIAL PRESSURE DATA

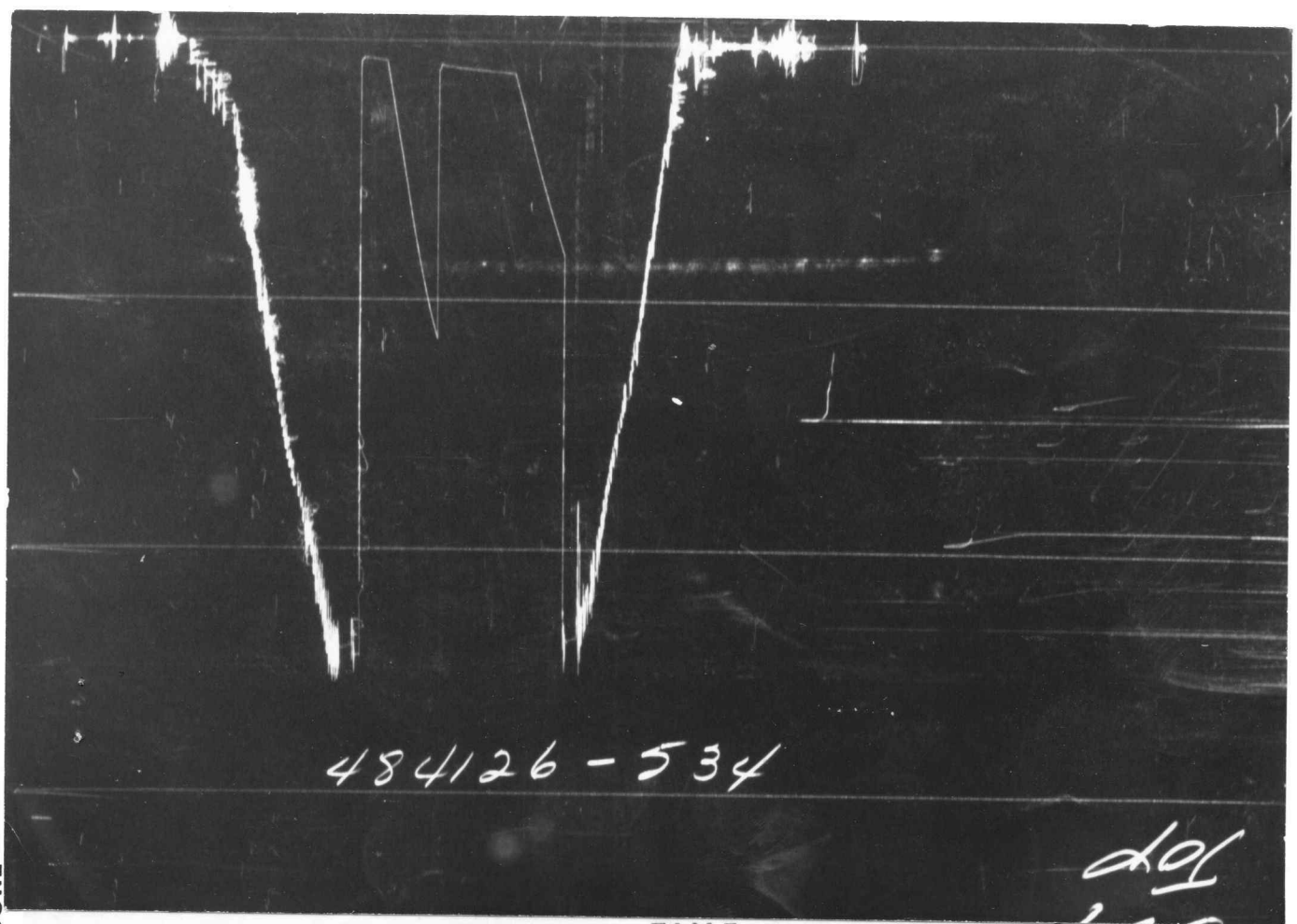
5

TEMPERATURE
RECORDER
CHART



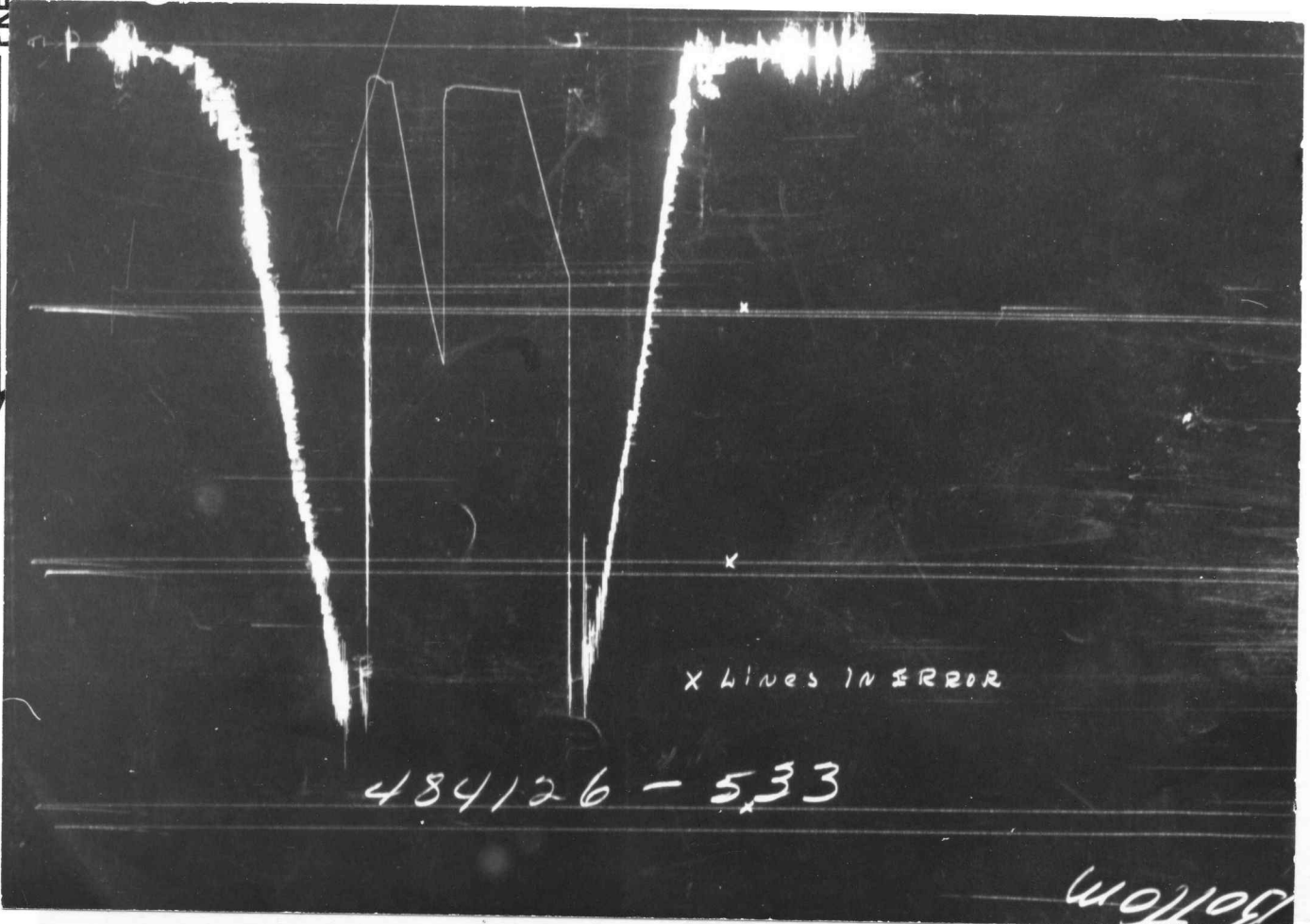
10° each circle

PRESSURE



TIME

PRESSURE



Each Horizontal Line Equal to 1000 p.s.i.

CHARLIE CARR

Lease Name

23-34-7

Well No.

Test No.

Field Area

J. R. BUTLER

Lease Owner/Company Name

County HARPER

State

KANSAS

Owner's District

23-34

Flow Time	1st Min. 15	2nd Min. 45	Date	4-14-67	Ticket Number	484128 S
Closed in Press. Time	1st Min. 30	2nd Min. 30	Kind of Job	OPEN HOLE	Halliburton District	PRATT
Pressure Readings	Field	Office Corrected	Tester	MR. HUNTER	Witness	MR. PULLIAN
Depth Top Gauge	5124 Ft.	Blanked Off no	Drilling Contractor	CORBETT DRILLING		SS
BT. P.R.D. No.	534	Hour Clock 12	Elevation	1362'	Top Packer	5137'
Initial Hydro Mud Pressure	2689	2512	Total Depth	5155'	Bottom Packer	5141'
Initial Closed in Pres.	2066	2065	Interval Tested	5141' - 5155'	Formation Tested	SIMPSON
Initial Flow Pres.	28	1 69	Casing or Hole Size	7 7/8"	Casing Perfs. { Top	
	459	2 468			Bot.	
Final Flow Pres.	439	1 456	Surface Choke	1"	Bottom Choke	3/4"
	1060	2 1054				
Final Closed in Pres.	2046	2063	Size & Kind Drill Pipe	4" FH	Drill Collars Above Tester	I.D. - LENGTH 2.25" X 558'
Final Hydro Mud Pressure	2648	2434	Mud Weight	9.4	Mud Viscosity	48
Depth Cen. Gauge	Ft.	Blanked Off	Temperature	120	Anchor Size & Length	ID 3.32" X 14" OD 5"
				°F Est.		
BT. P.R.D. No.		Hour Clock	Depths Mea. From	-	Depth of Tester Valve	5108' Ft.
Initial Hydro Mud Pres.			TYPE AMOUNT		Depth Back Pres. Valve	Ft.
			Cushion			
Initial Closed in Pres.			Recovered	2180	Feet of saltwater.	
Initial Flow Pres.		1	Recovered		Feet of	
					2	
Final Flow Pres.		1	Recovered		Feet of	
					2	
Final Closed in Pres.			Recovered		Feet of	
Final Hydro Mud Pres.			Oil A.P.I. Gravity		Water Spec. Gravity	
Depth Bot. Gauge	5151 Ft.	Blanked Off yes	Gas Gravity		Surface Pressure	psi
BT. P.R.D. No.	533	Hour Clock 12	Tool Opened	2:20 am	A.M. P.M.	Tool Closed 3:50 am A.M. P.M.
Initial Hydro Mud Pres.	2616	2526	Remarks Tool opened for 15 minute first flow with			
Initial Closed in Pres.	2076	2076	a strong blow. Closed for 30 minute initial closed			
Initial Flow Pres.	38	1 85	in pressure. Reopened for 45 minute second flow			
	475	2 484				
Final Flow Pres.	475	1 465	with a strong blow. Closed for 30 minute final			
	1043	2 1065				
Final Closed in Pres.	2056	2075	closed in pressure.			
Final Hydro Mud Pres.	2577	2445				

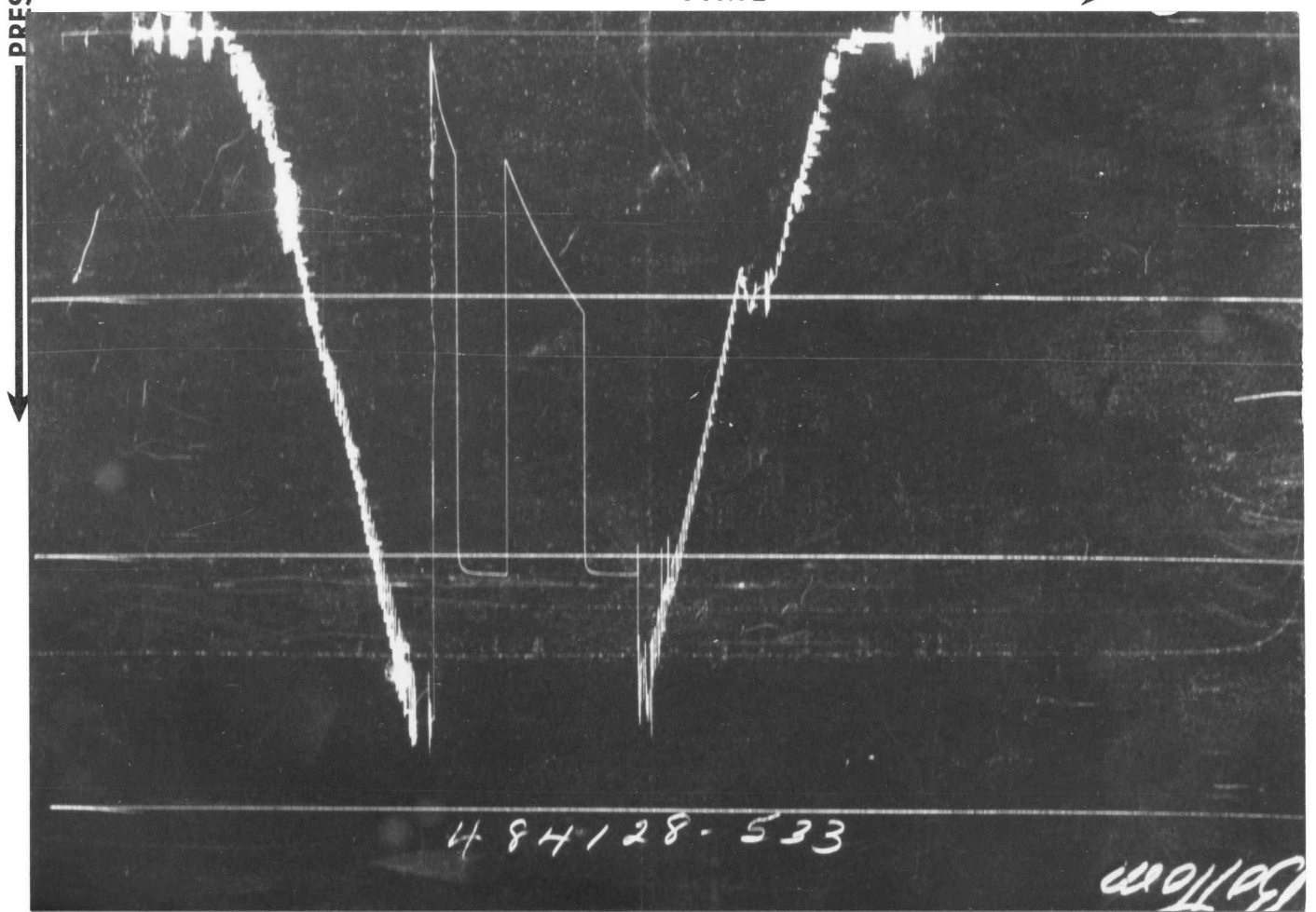
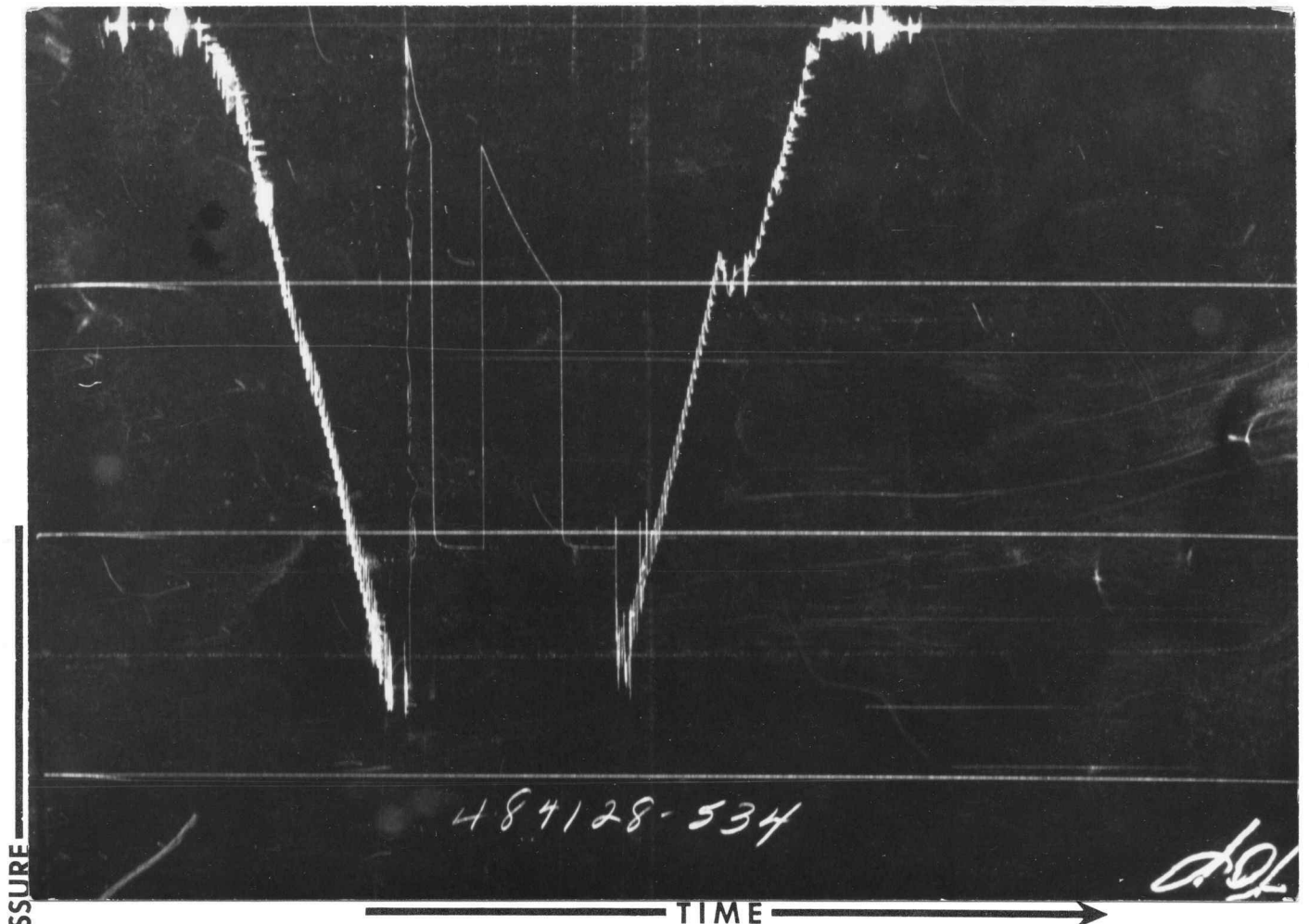
FORMATION TEST DATA

5

Gauge No. 534		Depth 5124'			Clock 12 hour		Ticket No. 484128			
First Flow Period			Initial Closed In Pressure			Second Flow Period		Final Closed In Pressure		
	Time Defl. .000"	PSIG Temp. Corr.	Time Defl. .000"	Log $\frac{t+\theta}{\theta}$	PSIG Temp. Corr.	Time Defl. .000"	PSIG Temp. Corr.	Time Defl. .000"	Log $\frac{t+\theta}{\theta}$	PSIG Temp. Corr.
P ₀	.000	69	.000		456	.000	468	.000		1054
P ₁	.020	161	.0202		2043	.063	616	.0208		2050
P ₂	.040	284	.0404		2054	.126	748	.0416		2057
P ₃	.060	346	.0606		2059	.189	861	.0624		2060
P ₄	.080	402	.0808		2061	.252	960	.0832		2061
P ₅	.100	456	.1010		2063	.315	1054	.1040		2062
P ₆			.1212		2064			.1248		2063
P ₇			.1414		2064			.1456		2063
P ₈			.1616		2064			.1664		2063
P ₉			.1818		2065			.1872		2063
P ₁₀			.202		2065			.208		2063
Gauge No. 533		Depth 5151'			Clock 12 hour					
P ₀	.000	85	.000		465	.000	484	.000		1065
P ₁	.0194	179	.020		2053	.0622	625	.0203		2063
P ₂	.0388	293	.040		2066	.1244	756	.0406		2069
P ₃	.0582	356	.060		2071	.1866	870	.0609		2072
P ₄	.0776	413	.080		2073	.2488	971	.0812		2073
P ₅	.097	465	.100		2074	.311	1065	.1015		2074
P ₆			.120		2075			.1218		2075
P ₇			.140		2076			.1421		2075
P ₈			.160		2076			.1624		2075
P ₉			.180		2076			.1827		2075
P ₁₀			.200		2076			.203		2075
Reading Interval		3	3		9		3		Minutes	
REMARKS:										

SPECIAL PRESSURE DATA

5 12



Each Horizontal Line Equal to 1000 p.s.i.