



Initial Closed In Time	--	Minutes		Date	7-22-59			
Tool Open Flow Period	60	Minutes		Ticket No.	222559			
Final Closed In Time	30	Minutes		HOWCO DISTRICT	WINFIELD			
Depth Top Gauge	1640'	Ft.	Blanked Off	NO	Kind of Job	OPEN HOLE TEST		
BT. P.R.D. No	272		12	Hr. Clock	CONTRACTOR WHITE & ELLIS DRILLING COMPANY			
Pressure Readings	Field		Office Corrected		HOLE & TOOL DATA			
Initial Hydro Mud Pressure			803		Elevation	1341'	Top Packer Depth	1629'
Initial Closed in Pres.					Total Depth	1683'	Bottom Packer Depth	1636'
Initial Flow Pres.			20		Casing or Hole Size	7 7/8"	Size & Type Wall Packer	6 3/4" ESWP
Final Flow Pres.			20		Liner or Rathole Size	7 7/8"	Size Bottom Choke	3/4"
Final Closed in Pres.			148		Casing Perforations	Top Bottom	Size Surface Choke	1"
Final Hydro Mud Pressure			803		Interval Tested	1636' to 1683'	ID & Length Air Chamber	--
Depth Center Gauge	1679'	Ft.	Blanked Off	YES	Formation Tested	HUNTON LIME	ID & Length Drill Collars	--
BT. P.R.D. No	?		12	Hr. Clock	Est. Gauge Depth Temp.	100 F°	Size Drill Pipe	3 1/2" MOD
Pressure Readings	Field		Office Corrected		MUD DATA	ACTUAL 9.2	Viscosity	33
Initial Hydro Mud Pressure					All depths measured from	KELLY BUSHING	No...Folders Reproduced	5
Initial Closed in Pres.					REMARKS: Interval tested from 1636' to 1683'			
Initial Flow Pres.					in the Hunton Lime. Tool opened @ 9:37 A. M.			
Final Flow Pres.					with a very weak blow for 3 minutes, closed in			
Final Closed in Pres.					pressure taken @ 10:37 A. M., and started off			
Final Hydro Mud Pressure					bottom @ 11:07 A. M.			
Depth Bottom Gauge		Ft.	Blanked Off					
BT. P.R.D. No				Hr. Clock				
Pressure Readings	Field		Office Corrected					
Initial Hydro Mud Pressure								
Initial Closed in Pres.					Recovered	10'	Feet of	Drilling mud
Initial Flow Pres.					Recovered		Feet of	
Final Flow Pres.					Recovered		Feet of	
Final Closed in Pres.					Recovered		Feet of	
Final Hydro Mud Pressure					Witnessed By MR. WARREN MORRISE			
Amount-Type of Cushion	NONE				Tester	L. J. CLINE		

LOCATION SEC: 2-11-8e

FIELD YABEE

COUNTY

RILEY

STATE

KANSAS

LEASE NAME

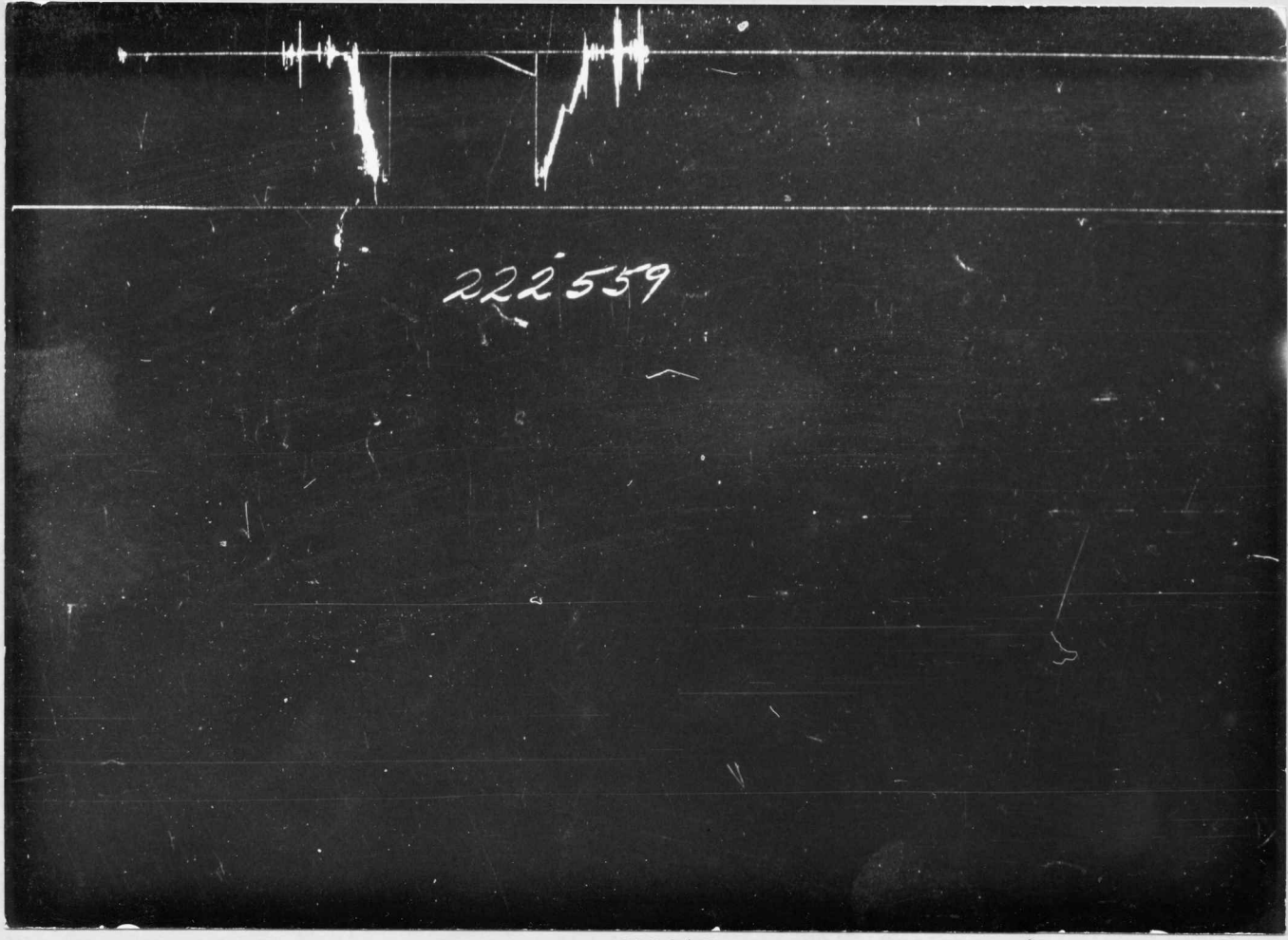
WELL NO.

TEST NO.

LEASE OWNER

OWNERS DISTRICT

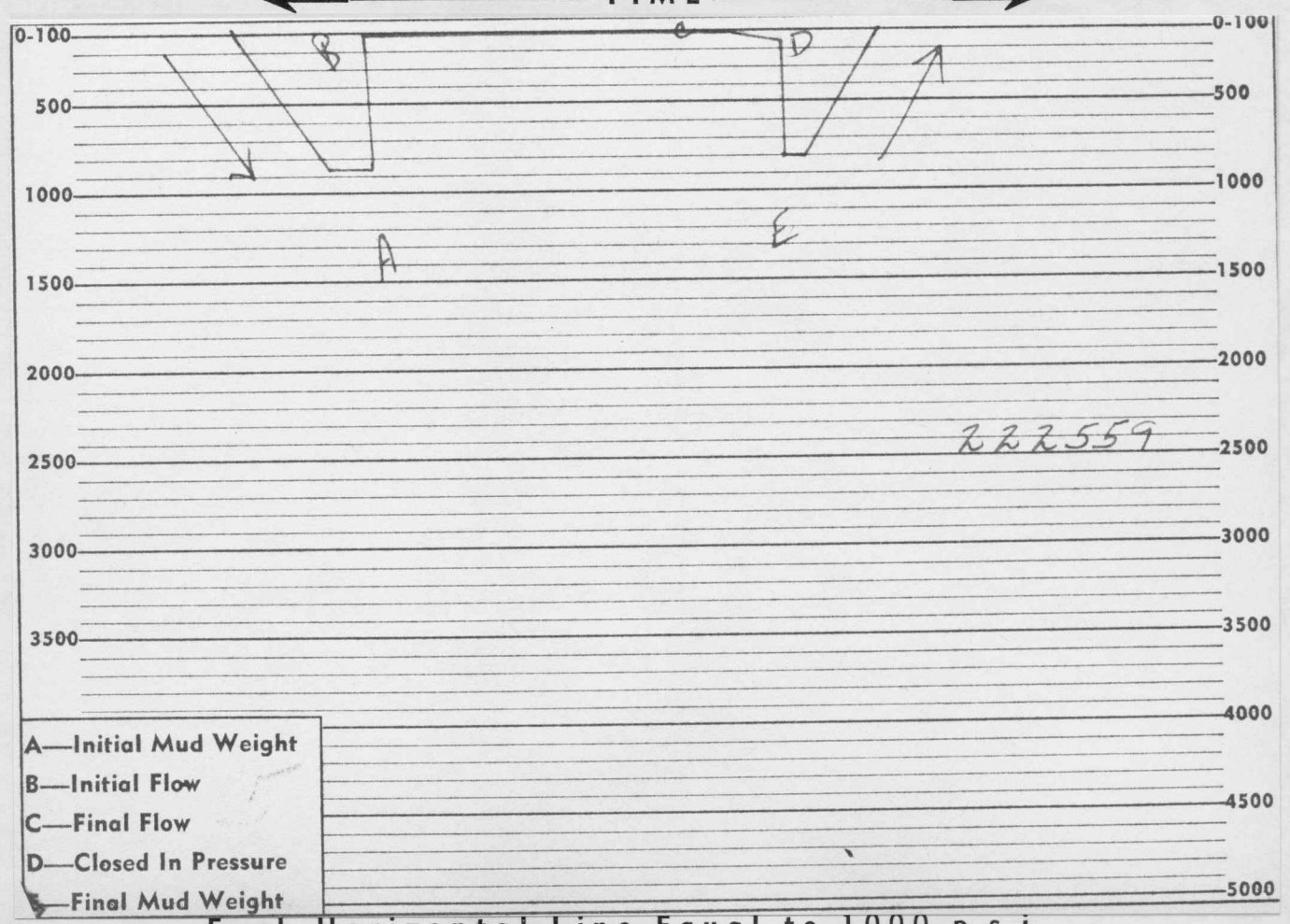
WHITE & ELLIS DRILLING COMPANY
MADISON 3-11-8e



222559

PRESSURE


TIME



222559

- A—Initial Mud Weight
- B—Initial Flow
- C—Final Flow
- D—Closed In Pressure
- E—Final Mud Weight

Each Horizontal Line Equal to 1000 p.s.i.

Initial Closed In Time	30 Minutes		Date	7-22-59	LOCATION 2-11S-3F		
Tool Open Flow Period	1-60 Minutes		Ticket No.	222560			
Final Closed In Time	30 Minutes		HOWCO DISTRICT	Winfield			
Depth Top Gauge	1689 Ft.	Blanked Off no	Kind of Job	Open Hole			
BT. P.R.D. No	272	12 Hr. Clock	CONTRACTOR WHITE AND ELLIS DRILLING COMPANY		FIELD YAEGE		
Pressure Readings	Field	Office Corrected	HOLE & TOOL DATA				
Initial Hydro Mud Pressure	828	809	Elevation	1341		Top Packer Depth	1680'
Initial Closed in Pres.	570	566	Total Depth	1698'		Bottom Packer Depth	1687'
Initial Flow Pres.	32	28-49	Casing or Hole Size	7 7/8"		Size & Type Wall Packer	6 3/4" ESWP
Final Flow Pres.	230	33-252	Liner or Rathole Size	7 7/8"		Size Bottom Choke	3/4"
Final Closed in Pres.	553	556	Casing Perforations	Top Bottom		Size Surface Choke	1"
Final Hydro Mud Pressure	811	798	Interval Tested	1687-1698'		ID & Length Air Chamber	-
Depth Center Gauge	1694 Ft.	Blanked Off yes	Formation Tested	Hynton Lime		ID & Length Drill Collars	6" x 90'
BT. P.R.D. No	-	12 Hr. Clock	Est. Gauge Depth Temp.	Calc. 100 F°		Size Drill Pipe	3 1/2"
Pressure Readings	Field	Office Corrected	MUD DATA Weight	9.3	Viscosity	36	
Initial Hydro Mud Pressure			All depths measured from	Kelly Bushing	No...Folders Reproduced	5	
Initial Closed in Pres.			REMARKS: Tool opened for 1 minute first flow.				
Initial Flow Pres.			Rotated tool for 30 Minutes Initial closed in				
Final Flow Pres.			pressure. Tool opened with a good strong				
Final Closed in Pres.			blow for approximately 15 minutes decreasing				
Final Hydro Mud Pressure			throughout test.				
Depth Bottom Gauge	Ft.	Blanked Off					
BT. P.R.D. No		Hr. Clock					
Pressure Readings	Field	Office Corrected					
Initial Hydro Mud Pressure							
Initial Closed in Pres.			Recovered	420	Feet of	free oil	
Initial Flow Pres.			Recovered	170	Feet of	mud cut oil	
Final Flow Pres.			Recovered	60	Feet of	mud	
Final Closed in Pres.			Recovered		Feet of		
Final Hydro Mud Pressure			Warren Morris				
Amount-Type of Cushion	-		Witnessed By				
			Tester L. J. Cline				

YAEGE
LEASE NAME

6
WELL NO.

2
TEST NO.

CITIES SERVICE OIL COMPANY
LEASE OWNER

MADISON
OWNERS DISTRICT

LOCATION

FIELD

COUNTY

RILEY

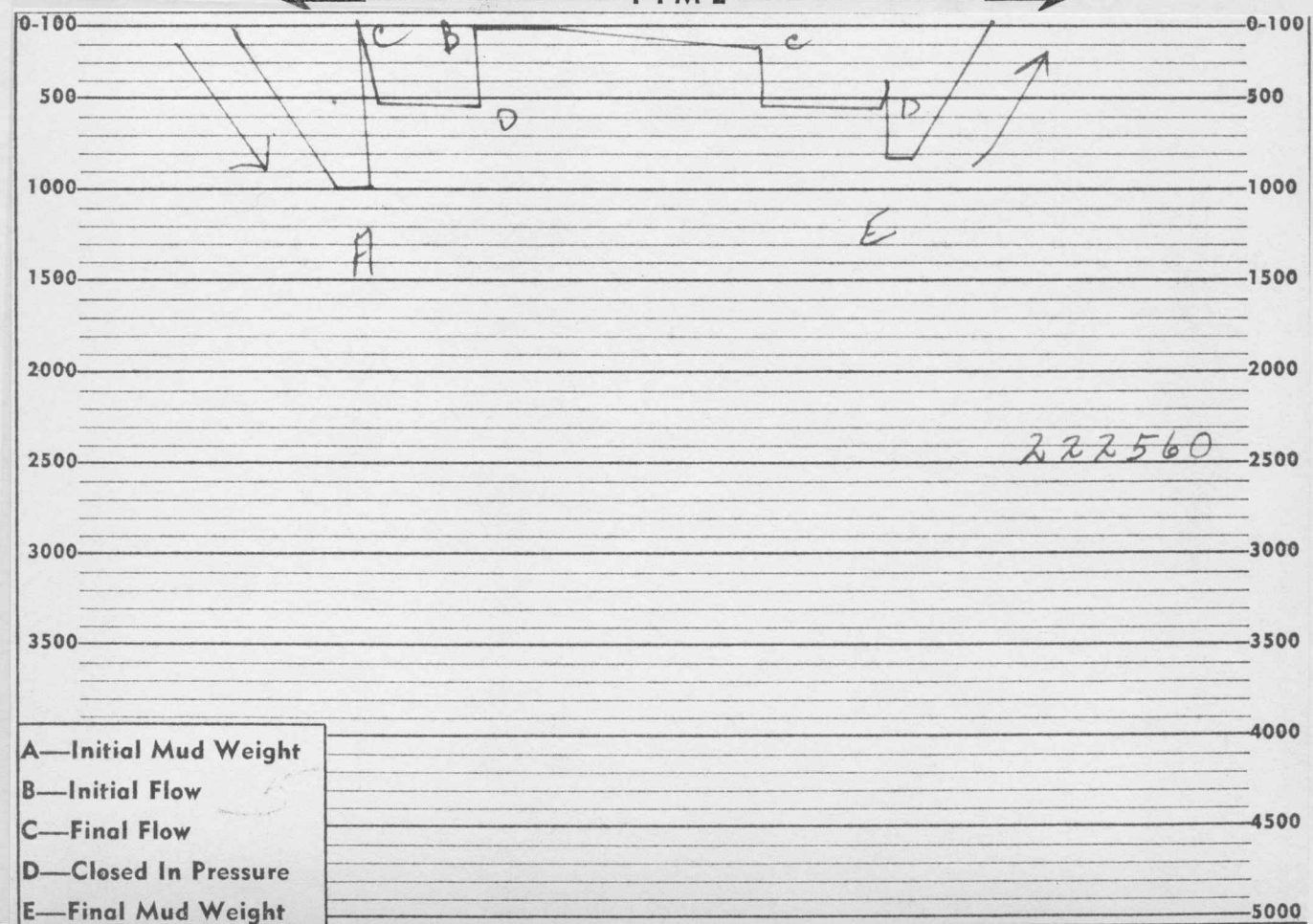
STATE KANSAS



222560

PRESSURE

TIME



222560

- A—Initial Mud Weight
- B—Initial Flow
- C—Final Flow
- D—Closed In Pressure
- E—Final Mud Weight

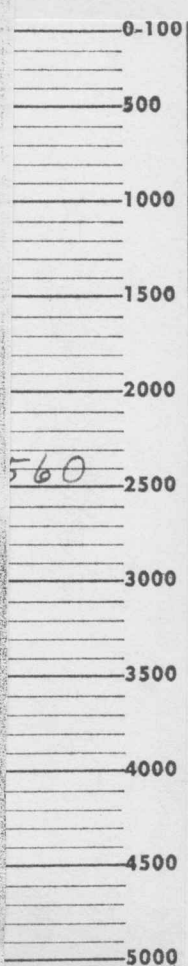
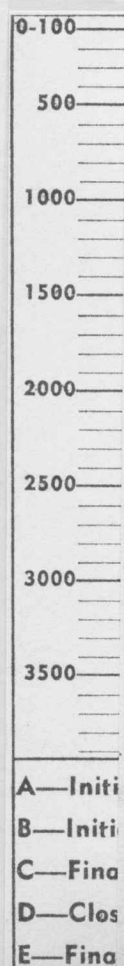
Each Horizontal Line Equal to 1000 p.s.i.

222560

Company **CITIES SERVICE OIL COMPANY** Date **7-22-59**


Initial Hydro Mud Pressure	Time	PSI	Ticket No. 222560 Lease YAEGE Well No. 6 Test No. 2 BT No. 272 Depth 1689 12 Hr. Clock No. 4205 Temperature Corrected to Calc. 100 ° F
1st Initial Flow		809	
		28	
Final Flow	1 Minutes	33	
Initial Closed In Pressure	30 Minutes	566	
2nd Initial Flow		49	
		252	
Final Flow	60 Minutes	252	
Final Closed In Pressure	30 Minutes	556	
Final Hydro Mud Pressure		798	

PRESSURE



	1st Flow Pressure		Initial CIP		2nd Flow Pressure		Final CIP	
	Time Defl. .000"	PSI Temp. Corr.	Time Defl. .000"	PSI Temp. Corr.	Time Defl. .000"	PSI Temp. Corr.	Time Defl. .000"	PSI Temp. Corr.
PO			.000	33	.000	49	.000	252
P1			.0195	529	.098	111	.020	490
P2			.039	546	.196	163	.040	513
P3			.0585	553	.294	208	.060	525
P4			.078	558	.392	252	.080	535
P5			.0975	561			.100	542
P6			.117	563			.120	546
P7			.1365	564			.140	548
P8			.156	566			.160	551
P9			.1755	566			.180	554
P10			.195	566			.200	556
		Minute Intervals	3	Minute Intervals	15	Minute Intervals	3	Minute Intervals

Remarks:

Initial Closed In Time	30	Minutes		Date	7-23-59	
Tool Open Flow Period	5-60	Minutes		Ticket No.	222561	
Final Closed In Time	30	Minutes		HOWCO DISTRICT	Eldorado, Kansas	
Depth Top Gauge	1700	Ft.	Blanked Off	no	Kind of Job	Open Hole
BT. P.R.D. No	272		12	Hr. Clock	CONTRACTOR WHITE AND ELLIS DRILLING COMPANY	
Pressure Readings	Field		Office Corrected		HOLE & TOOL DATA	
Initial Hydro Mud Pressure	810		816		Elevation	1341
Initial Closed in Pres.	570		574		Total Depth	1708'
Initial Flow Pres.	50		44-80		Casing or Hole Size	7 7/8"
Final Flow Pres.	425		65-427		Liner or Rathole Size	7 7/8"
Final Closed in Pres.	553		564		Casing Perforations	Top Bottom
Final Hydro Mud Pressure	795		806		Interval Tested	1698-1708'
Depth Center Gauge	1704	Ft.	Blanked Off	yes	Formation Tested	Hunton Lime
BT. P.R.D. No	-		-	Hr. Clock	Est. Gauge Depth Temp.	Actual 86 F°
Pressure Readings	Field		Office Corrected		MUD DATA Weight	9.3
Initial Hydro Mud Pressure					All depths measured from	Kelly Bushing
Initial Closed in Pres.					No...Folders Reproduced	5
Initial Flow Pres.					REMARKS: Tool opened for 5 minutes first flow	
Final Flow Pres.					Rotated tool for 30 Minutes Initial closed in	
Final Closed in Pres.					pressure. Tool opened with a strong blow dim-	
Final Hydro Mud Pressure					inishing throughout test.	
Depth Bottom Gauge		Ft.	Blanked Off			
BT. P.R.D. No				Hr. Clock		
Pressure Readings	Field		Office Corrected			
Initial Hydro Mud Pressure						
Initial Closed in Pres.					Recovered	470 Feet of free oil
Initial Flow Pres.					Recovered	70 Feet of mud cut oil
Final Flow Pres.					Recovered	480 Feet of oil cut mud
Final Closed in Pres.					Recovered	20 Feet of mud
Final Hydro Mud Pressure					Witnessed By	Warren Morrise
Amount-Type of Cushion					Tester	L. J. Cline

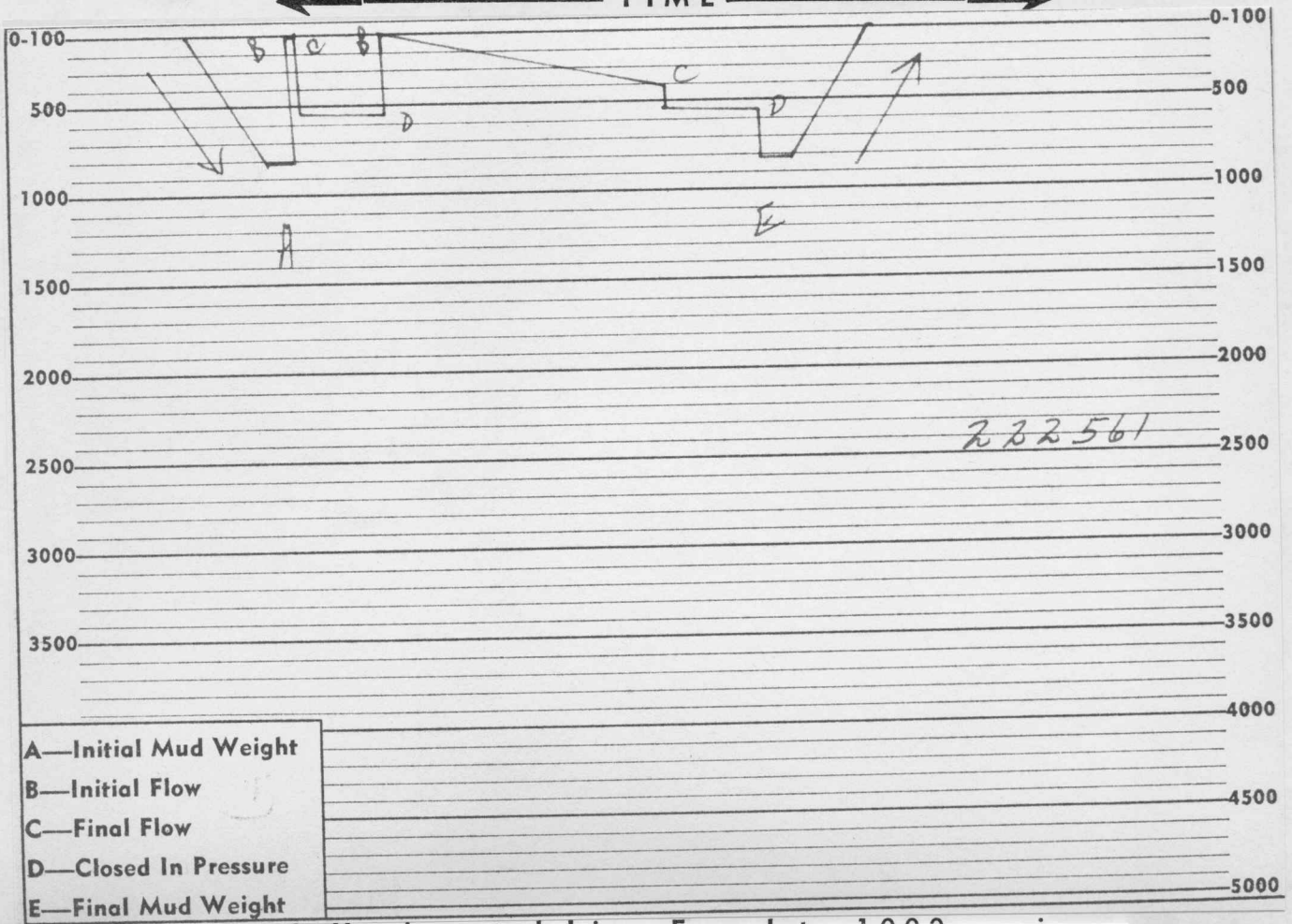
LEASE NAME: YAEGE
 WELL NO.: 6
 TEST NO.: 3
 COUNTY: RILEY
 STATE: KANSAS
 OWNERS DISTRICT: MADISON
 LEASE OWNER: CITIES SERVICE OIL COMPANY

LOCATION: 2-115-8E
 FIELD: YAEGE
 COUNTY: RILEY
 STATE: KANSAS

222561

↑
PRESSURE
↓

← TIME →



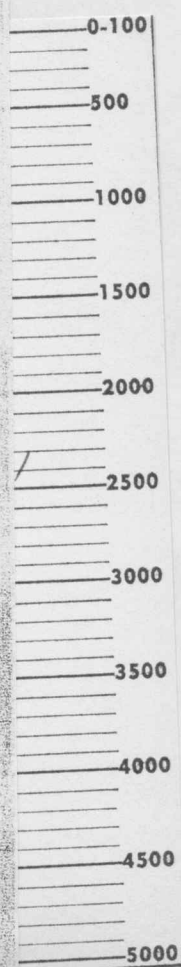
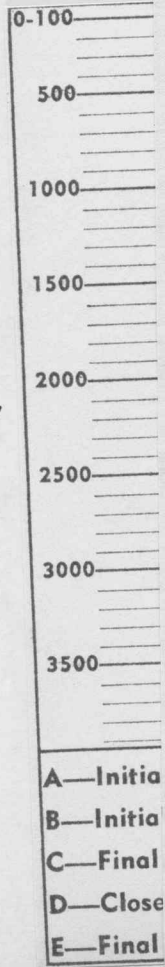
222561

Company **CITIES SERVICE OIL COMPANY**

Date **7-23-59**

	Time	PSI	Ticket No. 222561 Lease YAEGE Well No. 6 Test No. 3 BT No. 272 Depth 1700 12 Hr. Clock No. 4205 Temperature Corrected to Actual 86 ° F
Initial Hydro Mud Pressure		816	
1st	Initial Flow	44	
	Final Flow	5 Minutes 65	
Initial Closed In Pressure	30 Minutes	574	
2nd	Initial Flow	80	
	Final Flow	60 Minutes 427	
Final Closed In Pressure	30 Minutes	564	
Final Hydro Mud Pressure		806	

PRESSURE



	1st Flow Pressure		Initial CIP		2nd Flow Pressure		Final CIP	
	Time Defl. .000"	PSI Temp. Corr.	Time Defl. .000"	PSI Temp. Corr.	Time Defl. .000"	PSI Temp. Corr.	Time Defl. .000"	PSI Temp. Corr.
PO			.000	65	.000	80	.000	427
P1			.0195	553	.097	213	.0195	558
P2			.039	563	.194	305	.039	553
P3			.0585	567	.291	375	.0585	553
P4			.078	569	.388	427	.078	556
P5			.0975	571			.0975	558
P6			.117	572			.117	561
P7			.1365	574			.1365	564
P8			.156	574			.156	564
P9			.1755	574			.1755	564
P10			.195	574			.195	564
		Minute Intervals	3	Minute Intervals	15	Minute Intervals	3	Minute Intervals

QUESTIONABLE

Remarks: