




Initial Closed In Time	30 Minutes		Date	7-28-59	
Tool Open Flow Period	1st 5 / 2nd 60 Minutes		Ticket No.	206482	
Final Closed In Time	30 Minutes		HOWCO DISTRICT	El Dorado, Kansas	
Depth Top Gauge	1646 Ft.	Blanked Off	no	Kind of Job	Open Hole
BT. P.R.D. No	291	12 Hr. Clock	CONTRACTOR WHITE AND ELLIS DRILLING COMPANY		
Pressure Readings	Field	Office Corrected	HOLE & TOOL DATA		
Initial Hydro Mud Pressure	878	845	Elevation	1378 K. B. Top Packer Depth 1656'	
Initial Closed in Pres.	508	517	Total Depth	1676' Bottom Packer Depth 1663'	
Initial Flow Pres.	15	8-9	Casing or Hole Size	7 5/8" Size & Type Wall Packer 6 3/4" ESWP	
Final Flow Pres.	15	8-14	Liner or Rathole Size	7 5/8" Size Bottom Choke 7/8"	
Final Closed in Pres.	455	441	Casing Perforations	Top Bottom Size Surface Choke 1/4"	
Final Hydro Mud Pressure	878	839	Interval Tested	1663-1676' ID & Length Air Chamber -	
Depth Center Gauge	1672 Ft.	Blanked Off	yes	Formation Tested Lime Hunton ID & Length Drill Collars 2 3/8" x 87'	
BT. P.R.D. No	1698	12 Hr. Clock	Est. Gauge Depth Temp.	Actual 78F° Size Drill Pipe 3 1/2" IF	
Pressure Readings	Field	Office Corrected	MUD DATA Weight 9.8 Viscosity 38		
Initial Hydro Mud Pressure			All depths measured from	Kelly Bushing No...Folders Reproduced 5	
Initial Closed in Pres.			REMARKS: Tool opened for 5 Minutes first flow.		
Initial Flow Pres.			Rotated tool for 30 Minutes Initial closed		
Final Flow Pres.			in pressure. Tool opened with a weak blow		
Final Closed in Pres.			which died in 8 minutes.		
Final Hydro Mud Pressure					
Depth Bottom Gauge	Ft.	Blanked Off			
BT. P.R.D. No		Hr. Clock			
Pressure Readings	Field	Office Corrected			
Initial Hydro Mud Pressure					
Initial Closed in Pres.			Recovered	5 Feet of free oil	
Initial Flow Pres.			Recovered	3 Feet of oil cut mud	
Final Flow Pres.			Recovered	Feet of	
Final Closed in Pres.			Recovered	Feet of	
Final Hydro Mud Pressure			Mr. Valentine Jr.		
Amount-Type of Cushion	-		Witnessed By	E.L. Sanders	
			Tester		

LOCATION 25-11-8
 FIELD
 COUNTY RILEY
 STATE KANSAS

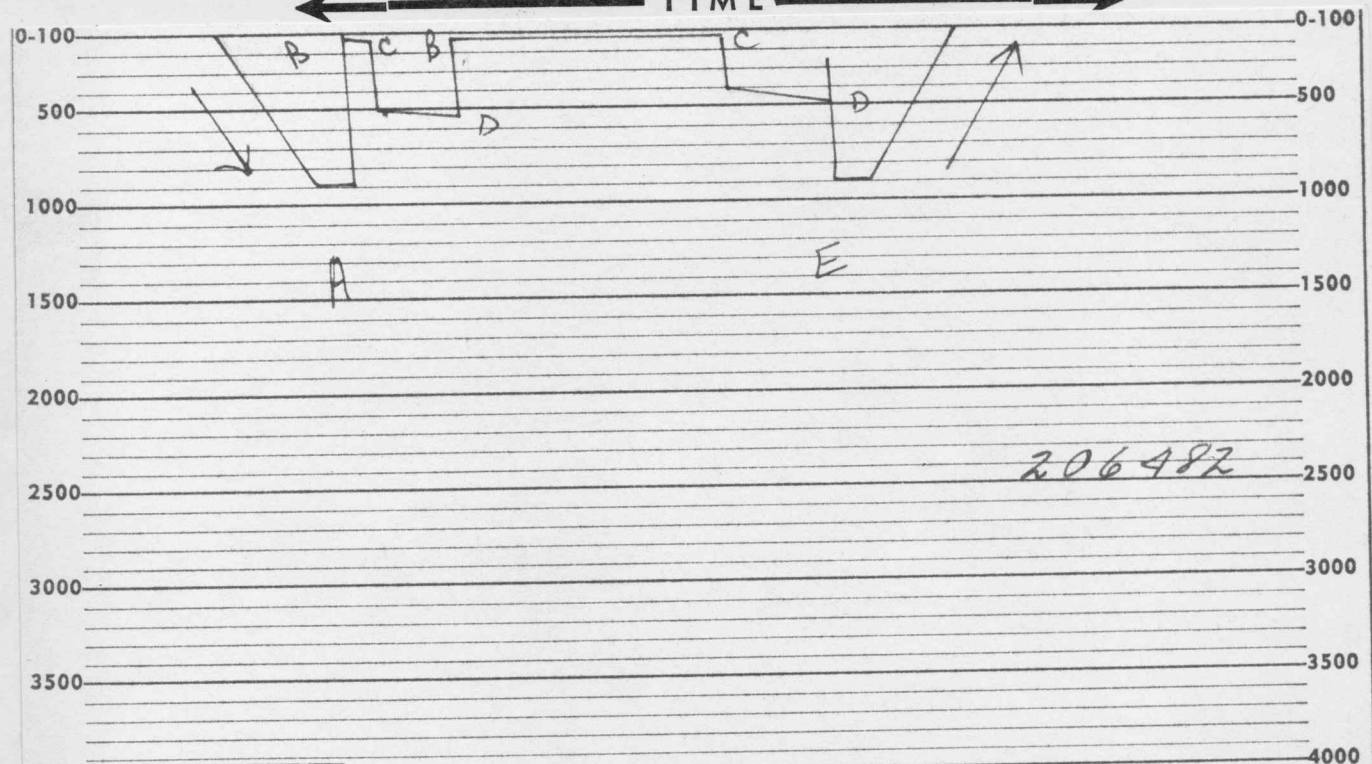
YARGE
 LEASE NAME
 WELL NO. 7
 TEST NO. 1
 YARGE
 CITIES SERVICE OIL COMPANY
 LEASE OWNER
 MADISON
 OWNERS DISTRICT



206482

PRESSURE

← TIME →



206482

- A—Initial Mud Weight
- B—Initial Flow
- C—Final Flow
- D—Closed In Pressure
- E—Final Mud Weight

Each Horizontal Line Equal to 1000 p.s.i.

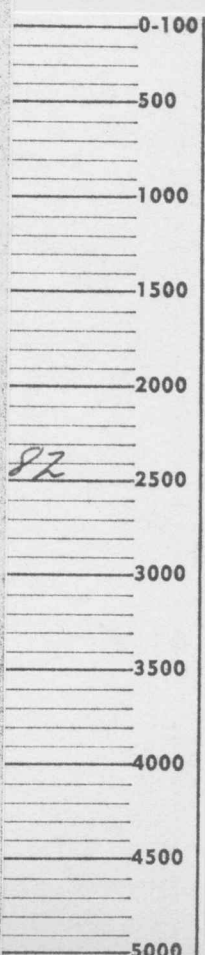
206482

Company CITIES SERVICE OIL COMPANY

Date 7-28-59

Initial Hydro Mud Pressure		Time	PSI	Ticket No. 206482 Lease YAEGE Well No. 7 Test No. 1 BT No. 291 Depth 1646' 12 Hr. Clock No. 3229 Temperature Corrected to Actual 78 ° F
1st	Initial Flow		8	
	Final Flow	5 Minutes	8	
Initial Closed In Pressure		30 Minutes	517	
2nd	Initial Flow		9	
	Final Flow	60 Minutes	14	
Final Closed In Pressure		30 Minutes	441	
Final Hydro Mud Pressure			839	

PRESSURE



	1st Flow Pressure		Initial CIP		2nd Flow Pressure		Final CIP	
	Time Defl. .000"	PSI Temp. Corr.	Time Defl. .000"	PSI Temp. Corr.	Time Defl. .000"	PSI Temp. Corr.	Time Defl. .000"	PSI Temp. Corr.
PO			.000	8	.000	9	.000	14
P1			.0205	355	.421	14	.020	238
P2			.041	439			.040	314
P3			.0615	462			.060	344
P4			.082	479			.080	368
P5			.1025	488			.100	386
P6			.123	497			.120	403
P7			.1435	503			.140	417
P8			.164	509			.160	427
P9			.1845	514			.180	436
P10			.205	517			.200	441
	Minute Intervals		3	Minute Intervals	Minute Intervals		3	Minute Intervals

A—Init
B—Init
C—Fin
D—Clo
E—Finc

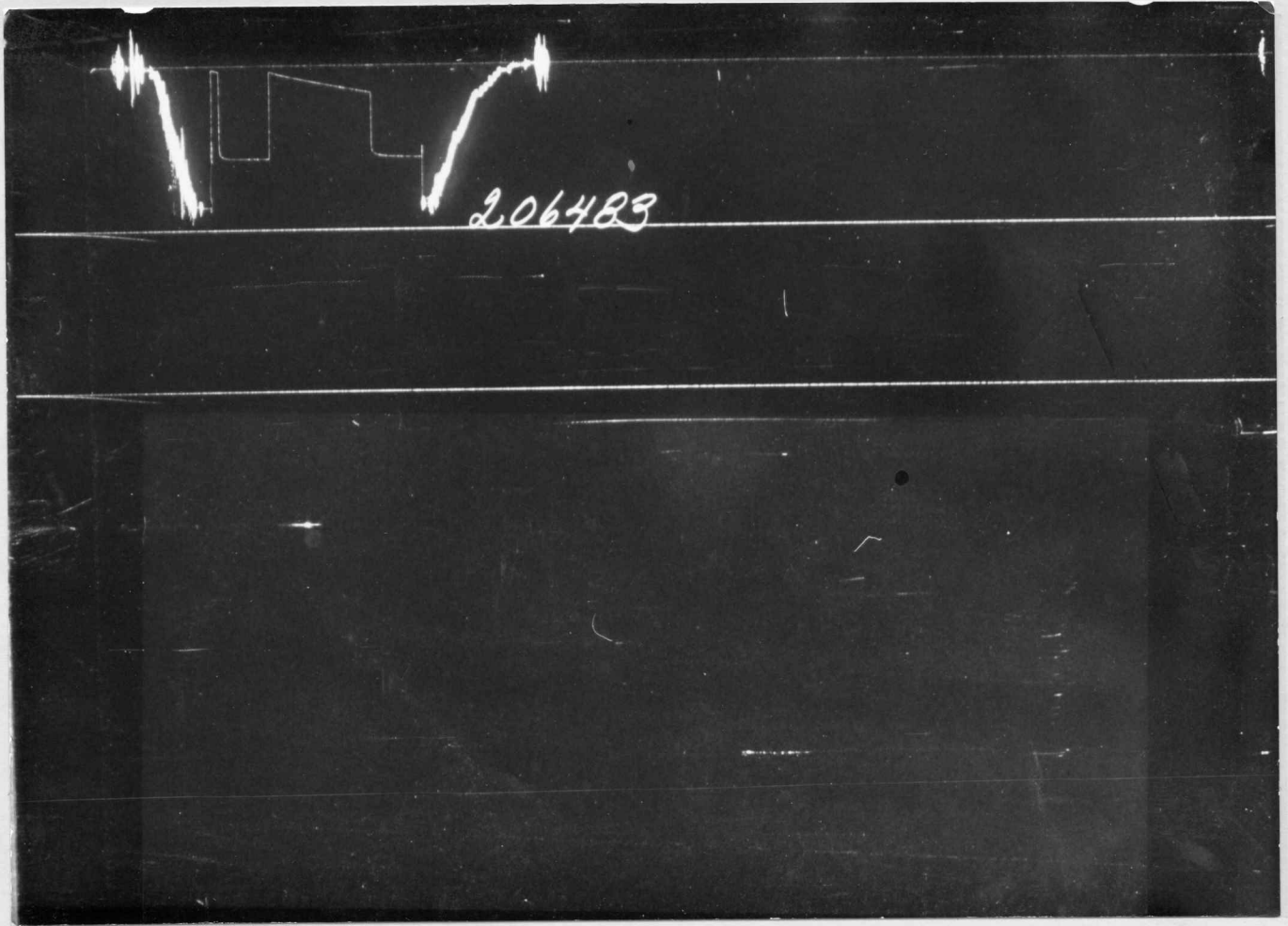
Remarks:



Initial Closed In Time		30 Minutes		Date		7-29-59	
Tool Open Flow Period		1st 5 / 2nd 60 Minutes		Ticket No.		2064831	
Final Closed In Time		30 Minutes		HOWCO DISTRICT		El Dorado, Kansas	
Depth Top Gauge		1680 Ft.		Blanked Off		no	
BT. P.R.D. No		291		12 Hr. Clock		CONTRACTOR WHITE AND ELLIS DRILLING COMPANY	
Pressure Readings		Field		Office Corrected		HOLE & TOOL DATA	
Initial Hydro Mud Pressure		878		861		Elevation 1378 K. B. Top Packer Depth 1670'	
Initial Closed in Pres.		562		568		Total Depth 1696' Bottom Packer Depth 1676'	
Initial Flow Pres.		15		26-11		Casing or Hole Size 7 5/8" Size & Type Wall Packer 6 3/4" ESWP	
Final Flow Pres.		185		35-167		Liner or Rathole Size 7 5/8" Size Bottom Choke 7/8"	
Final Closed in Pres.		562		563		Casing Perforations Top Bottom Size Surface Choke 1/2"	
Final Hydro Mud Pressure		878		819		Interval Tested 1676-1696' ID & Length Air Chamber -	
Depth Center Gauge		1691 Ft.		Blanked Off		yes	
BT. P.R.D. No		1698		12 Hr. Clock		Formation Tested Hunton ID & Length Drill Collars 2 3/8" x 87'	
Pressure Readings		Field		Office Corrected		MUD DATA Est. Gauge Depth Temp. Calc. 100°F Size Drill Pipe 3 1/2" IF	
Initial Hydro Mud Pressure						All depths measured from Kelly Bushing No. Folders Reproduced 5	
Initial Closed in Pres.						REMARKS: Tool opened for 5 Minutes first flow.	
Initial Flow Pres.						Rotated tool for 30 Minutes Initial closed	
Final Flow Pres.						in pressure. Tool opened with a fair strong	
Final Closed in Pres.						blow throughout test.	
Final Hydro Mud Pressure							
Depth Bottom Gauge		Ft.		Blanked Off			
BT. P.R.D. No				Hr. Clock			
Pressure Readings		Field		Office Corrected			
Initial Hydro Mud Pressure							
Initial Closed in Pres.						Recovered 190 Feet of free oil	
Initial Flow Pres.						Recovered 120 Feet of mud cut oil	
Final Flow Pres.						Recovered 120 Feet of oil cut mud	
Final Closed in Pres.						Recovered Feet of	
Final Hydro Mud Pressure						Witnessed By R. Valentine-Don Hennigan	
Amount-Type of Cushion						Tester E.L. Sanders	

YABGE LEASE NAME
 WELL NO. 7
 TEST NO. 2
 YABGE
 COUNTY RILEY
 STATE KANSAS
 CITY SERVICE OIL COMPANY
 LEASE OWNER
 MADISON OWNERS DISTRICT
 25-11-88

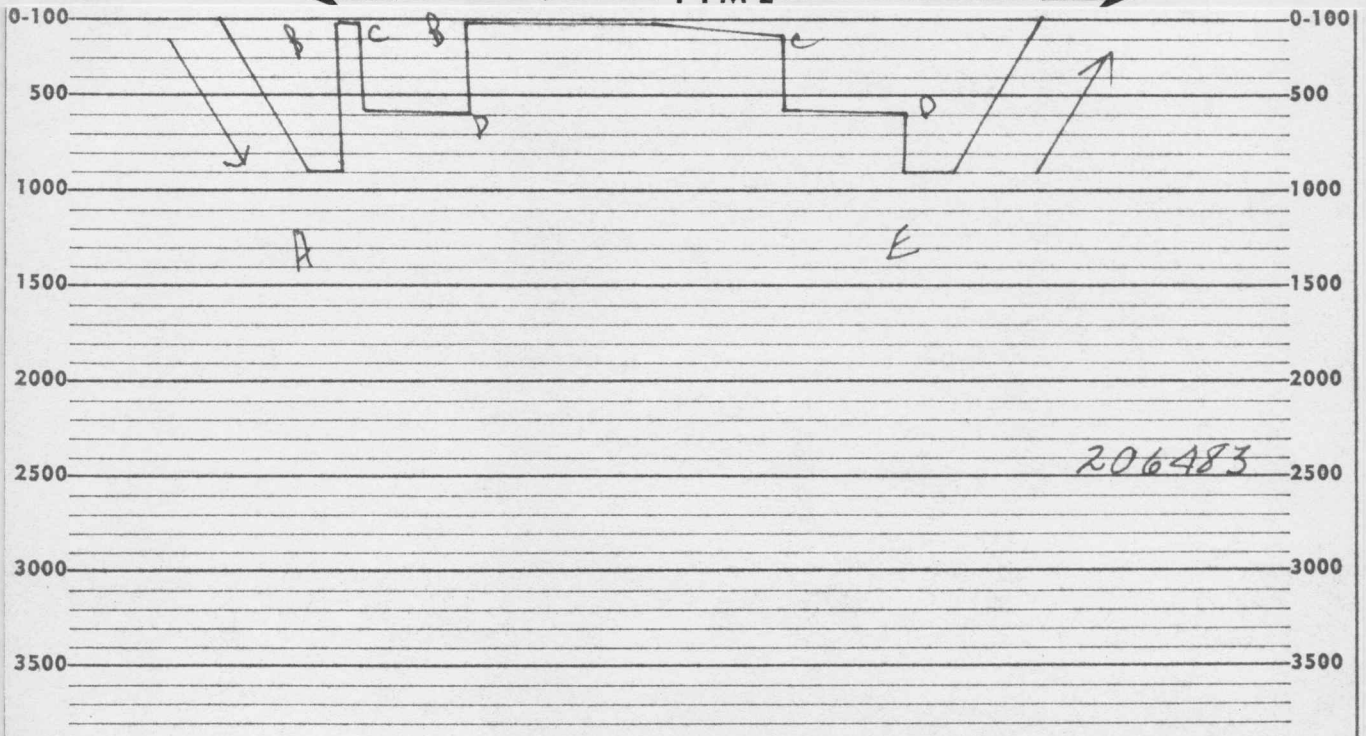
LOCATION 25-11-8
 FIELD
 COUNTY RILEY
 STATE KANSAS



206483

↑
PRESSURE
↓

← TIME →



206483

- A—Initial Mud Weight
- B—Initial Flow
- C—Final Flow
- D—Closed In Pressure
- E—Final Mud Weight

Each Horizontal Line Equal to 1000 psi

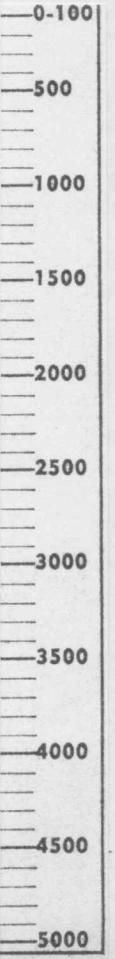
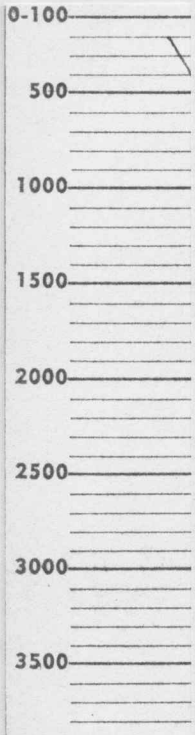
206483

Company CITIES SERVICE OIL COMPANY

Date 7-29-59

Initial Hydro Mud Pressure	Time	PSI	Ticket No. 206483
		861	
1st Initial Flow		26	Lease YAEGE
	Final Flow	5 Minutes	
Initial Closed In Pressure	30 Minutes	568	Well No. 7 Test No. 2
2nd Initial Flow		41	BT No. 291 Depth 1680'
	Final Flow	60 Minutes	
Final Closed In Pressure	30 Minutes	563	12 Hr. Clock No. 3229
Final Hydro Mud Pressure		849	Temperature Corrected to Calc. 100 ° F

PRESSURE



	1st Flow Pressure		Initial CIP		2nd Flow Pressure		Final CIP	
	Time Defl. .000''	PSI Temp. Corr.	Time Defl. .000''	PSI Temp. Corr.	Time Defl. .000''	PSI Temp. Corr.	Time Defl. .000''	PSI Temp. Corr.
P0	.000	26	.000	35	.000	41	.000	167
P1	.006	24	.0205	559	.1035	76	.0205	544
P2	.012	27	.041	565	.207	109	.041	553
P3	.018	30	.0615	566	.3105	139	.0615	556
P4	.024	32	.082	566	.414	167	.082	557
P5	.030	35	.1025	566			.1025	559
P6			.123	566			.123	560
P7			.1435	568			.1435	562
P8			.164	568			.164	562
P9			.1845	568			.1845	563
P10			.205	568			.205	563
	1 Minute Intervals		3 Minute Intervals		15 Minute Intervals		3 Minute Intervals	

A—Initial Mud Pressure
 B—Initial Flow
 C—Final Flow
 D—Closed In Pressure
 E—Final Mud Pressure

Remarks: