

Initial Closed In Time	33	Minutes		Date	6-28-59			
Tool Open Flow Period	5-120	Minutes		Ticket No.	206435			
Final Closed In Time	30	Minutes		HOWCO DISTRICT	Winfield			
Depth Top Gauge	1672	Ft.		Blanked Off	No	Kind of Job	Open Hole	
BT. P.R.D. No	312		12	Hr. Clock	CONTRACTOR	White and Ellis		
Pressure Readings	Field		Office Corrected		HOLE & TOOL DATA			
Initial Hydro Mud Pressure	-		863		Elevation	1361' KB	Top Packer Depth	1670'
Initial Closed in Pres.	-		570		Total Depth	1687'	Bottom Packer Depth	-
Initial Flow Pres.	-		29-80		Casing or Hole Size	7 7/8"	Size & Type Wall Packer	6 3/4" ESWP
Final Flow Pres.	-		63-462		Liner or Rathole Size	7 7/8"	Size Bottom Choke	5/8"
Final Closed in Pres.	-		564		Casing Perforations	Top Bottom	Size Surface Choke	1/4"
Final Hydro Mud Pressure	-		844		Interval Tested	1670-1687'	ID & Length Air Chamber	-
Depth Center Gauge	1683	Ft.	Blanked Off	Yes	Formation Tested	Hunton	ID & Length Drill Collars	2.25" x 58'
BT. P.R.D. No	2083		-	Hr. Clock	Est. Gauge Depth Temp.	Actual 82 F°	Size Drill Pipe	3 1/2" IF
Pressure Readings	Field		Office Corrected		MUD DATA Weight	9.6	Viscosity	39
Initial Hydro Mud Pressure					All depths measured from	Kelly Bushing	No. Folders Reproduced	5
Initial Closed in Pres.					REMARKS: Opened tool 8:00 AM for a 5 minute			
Initial Flow Pres.					flow. Rotated tool closed for a 33 minute			
Final Flow Pres.					Initial Closed in Pressure. Reopened tool			
Final Closed in Pres.					with a fair blow. Took a 30 minute Final			
Final Hydro Mud Pressure					Closed in Pressure.			
Depth Bottom Gauge	Ft.		Blanked Off					
BT. P.R.D. No				Hr. Clock				
Pressure Readings	Field		Office Corrected					
Initial Hydro Mud Pressure								
Initial Closed in Pres.					Recovered	865	Feet of	Free oil
Initial Flow Pres.					Recovered	60	Feet of	Mud cut oil
Final Flow Pres.					Recovered	290	Feet of	Oil cut mud
Final Closed in Pres.					Recovered		Feet of	
Final Hydro Mud Pressure					Witnessed By	Rush Valentine		
Amount-Type of Cushion	-				Tester	B. Dixon		

LOCATION 25-11S-8E

FIELD YAEER

COUNTY RILEY

STATE KANSAS

LEASE NAME

WELL NO.

TEST NO.

LEASE OWNER

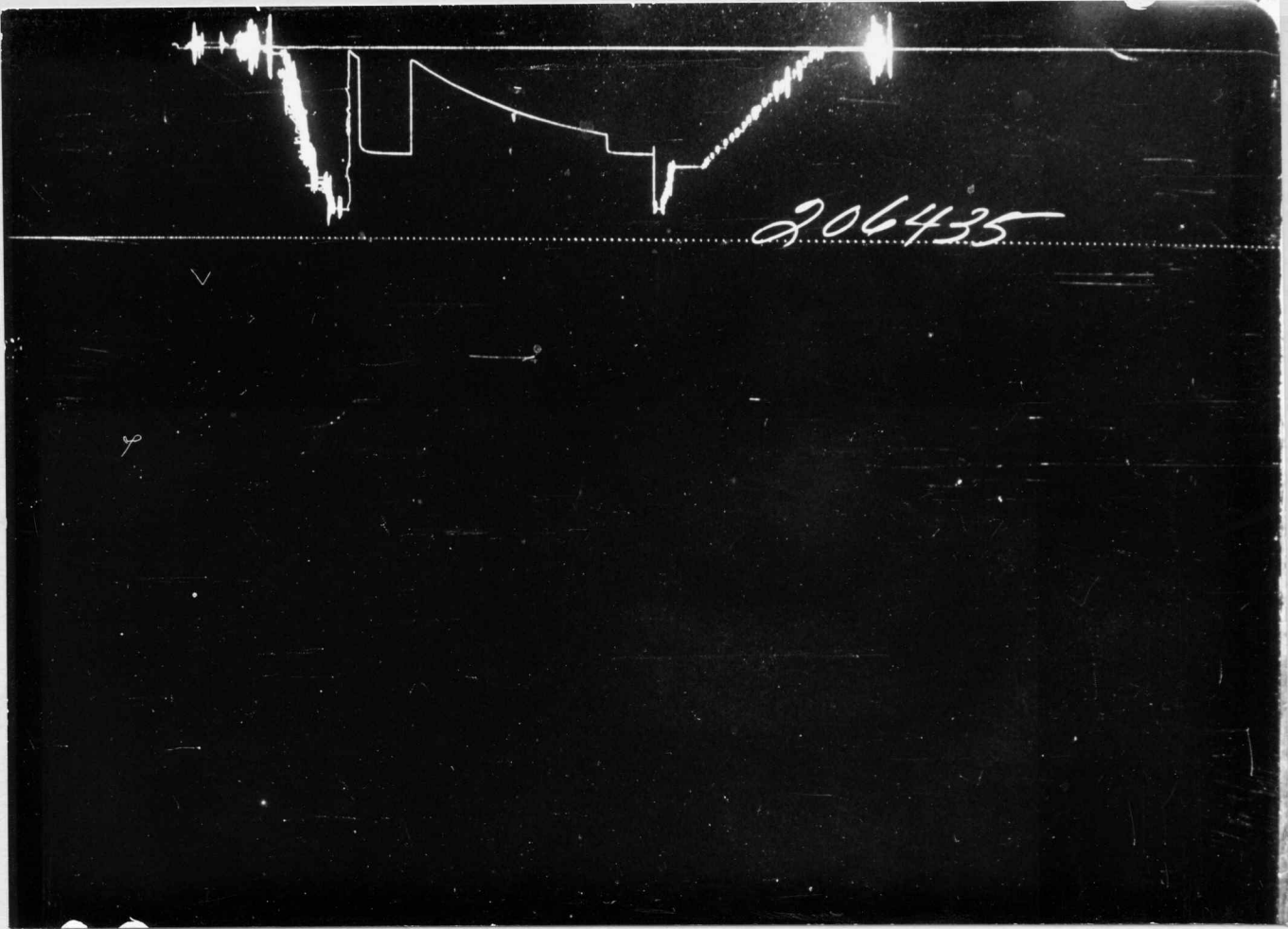
OWNERS DISTRICT

YAEER  
 5  
 1  
 CITIES SERVICE OIL COMPANY  
 25-11-8E  
 WANDAD

	Time	PSI		
Initial Hydro Mud Pressure		863	Ticket No. 206435	
1st Initial Flow		29		
	Final Flow	63	Lease YAEGE	
	5 Minutes			
Initial Closed In Pressure	33 Minutes	570	Well No. 5 Test No. 1	
2nd Initial Flow		80	BT No. 312 Depth 1672'	
	Final Flow	462	12 Hr. Clock No. 4205	
	120 Minutes		Temperature Corrected to Actual 82 ° F	
Final Closed In Pressure	30 Minutes	564		
Final Hydro Mud Pressure		844		

	1st Flow Pressure		Initial CIP		2nd Flow Pressure		Final CIP	
	Time Defl. .000"	PSI Temp. Corr.	Time Defl. .000"	PSI Temp. Corr.	Time Defl. .000"	PSI Temp. Corr.	Time Defl. .000"	PSI Temp. Corr.
PO	.000	29	.000	63	.000	80	.000	462
P1	.008	32	.021	551	.098	150	.019	555
P2	.016	43	.042	562	.196	219	.038	559
P3	.024	51	.063	564	.294	278	.057	561
P4	.032	57	.084	565	.392	330	.076	562
P5	.040	63	.105	567	.490	372	.095	563
P6			.126	568	.588	408	.114	564
P7			.147	570	.686	437	.133	564
P8			.168	570	.784	462	.152	564
P9			.189	570			.171	564
P10			.210	570			.190	564
	1	Minute Intervals	3.3	Minute Intervals	15	Minute Intervals	3	Minute Intervals

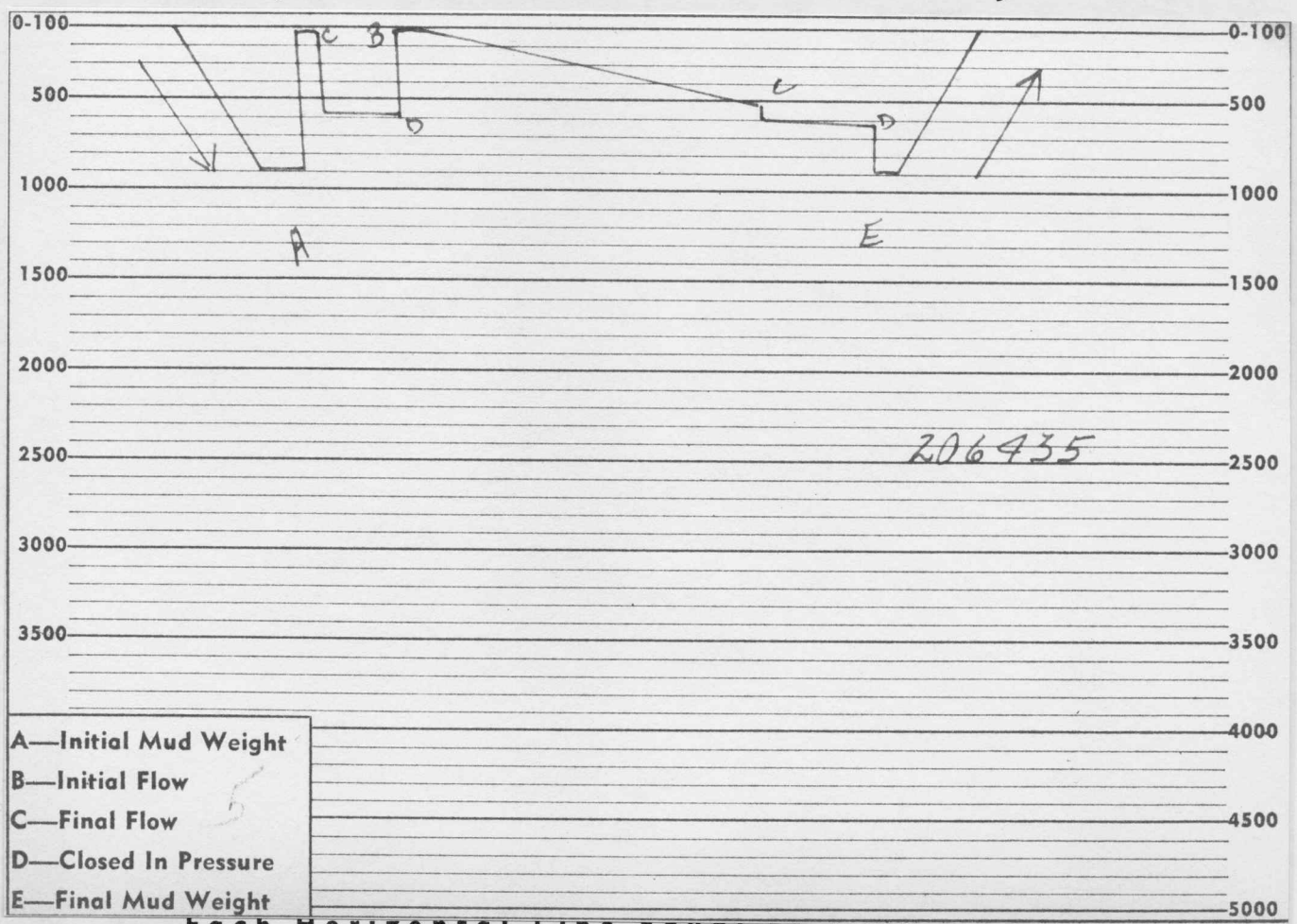
Remarks:



206435

PRESSURE


← TIME →



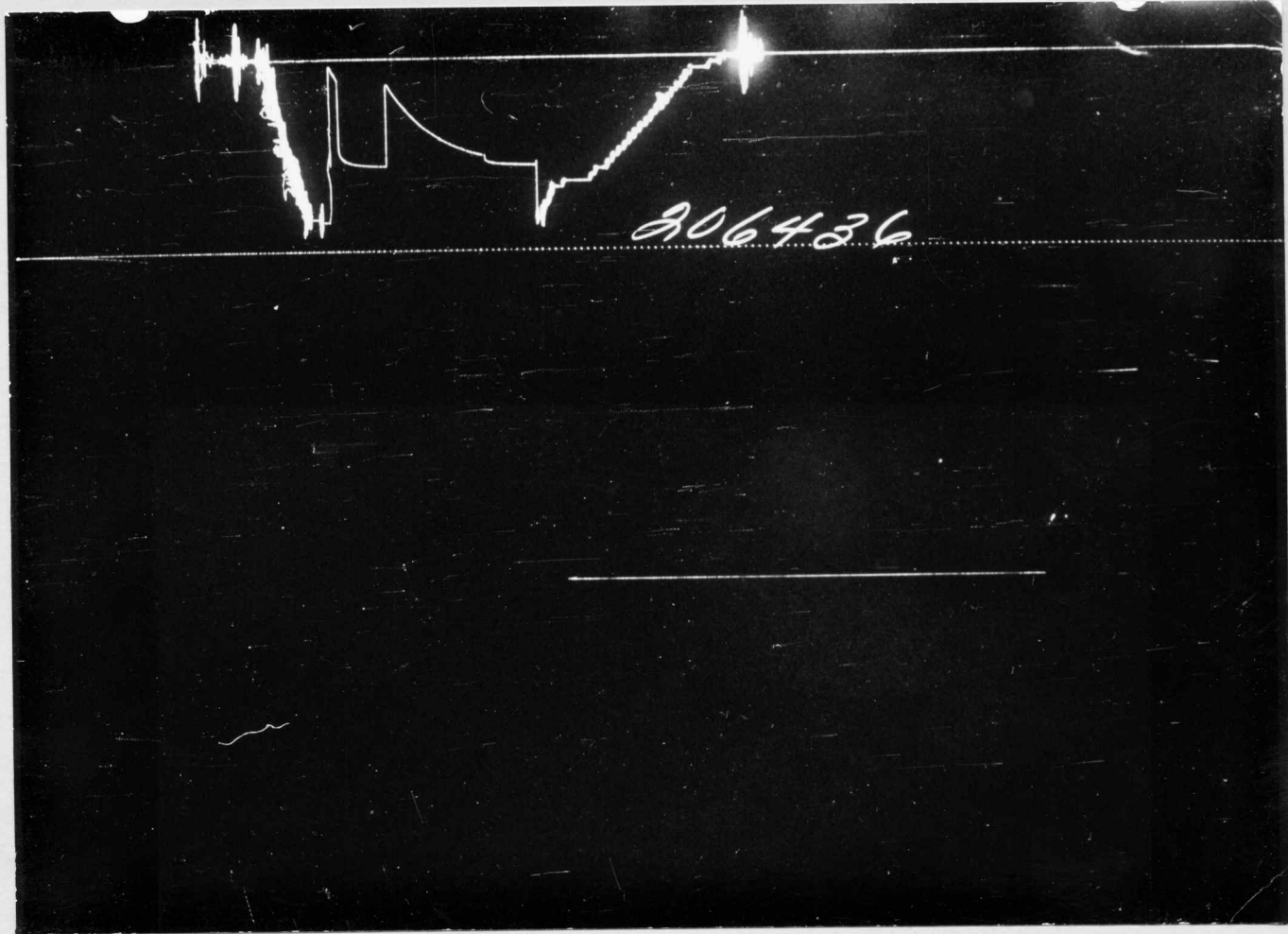
206435

- A—Initial Mud Weight
- B—Initial Flow
- C—Final Flow
- D—Closed In Pressure
- E—Final Mud Weight

Each Horizontal Line Equal to 1000 p.s.i.

Initial Closed In Time		30	Minutes		Date	6-29-59
Tool Open Flow Period		5-60	Minutes		Ticket No.	206436
Final Closed In Time		32	Minutes		HOWCO DISTRICT	Winfield
Depth Top Gauge	1689	Ft.	Blanked Off	no	Kind of Job	Open Hole
BT. P.R.D. No	312		12	Hr. Clock	CONTRACTOR WHITE AND ELLIS DRILLING COMPANY	
Pressure Readings	Field		Office Corrected		HOLE & TOOL DATA	
Initial Hydro Mud Pressure	--		859		Elevation	1361 K. B. Top Packer Depth 1687'
Initial Closed in Pres.	--		568		Total Depth	1703' Bottom Packer Depth --
Initial Flow Pres.	--		117-144		Casing or Hole Size	7 7/8" Size & Type Wall Packer 6 3/4" ESWP
Final Flow Pres.	--		117-518		Liner or Rathole Size	7 7/8" Size Bottom Choke 5/8"
Final Closed in Pres.	--		570		Casing Perforations	Top Bottom Size Surface Choke 1"
Final Hydro Mud Pressure	--		810		Interval Tested	1687-1703' ID & Length Air Chamber --
Depth Center Gauge	1699	Ft.	Blanked Off	yes	Formation Tested	Junton ID & Length Drill Collars 58' x 2.25
BT. P.R.D. No	2083		12	Hr. Clock	Est. Gauge Depth Temp.	Actual 82 F° Size Drill Pipe 3 1/2" IF
Pressure Readings	Field		Office Corrected		MUD DATA Weight	9.6 Viscosity 39
Initial Hydro Mud Pressure					All depths measured from	Kelly Bushing No. Folders Reproduced 5
Initial Closed in Pres.					REMARKS: Tool opened for 5 Minute first flow.	
Initial Flow Pres.					Rotated tool for 30 Minute Initial closed in	
Final Flow Pres.					pressure. Tool opened with a strong blow to	
Final Closed in Pres.					weak blow.	
Final Hydro Mud Pressure						
Depth Bottom Gauge		Ft.	Blanked Off			
BT. P.R.D. No				Hr. Clock		
Pressure Readings	Field		Office Corrected			
Initial Hydro Mud Pressure						
Initial Closed in Pres.					Recovered	649 Feet of free oil
Initial Flow Pres.					Recovered	538 Feet of very slightly mud cut o
Final Flow Pres.					Recovered	178 Feet of oil cut mud
Final Closed in Pres.					Recovered	Feet of
Final Hydro Mud Pressure					Witnessed By Rush Valentine	
Amount-Type of Cushion					Tester B. Dixon	

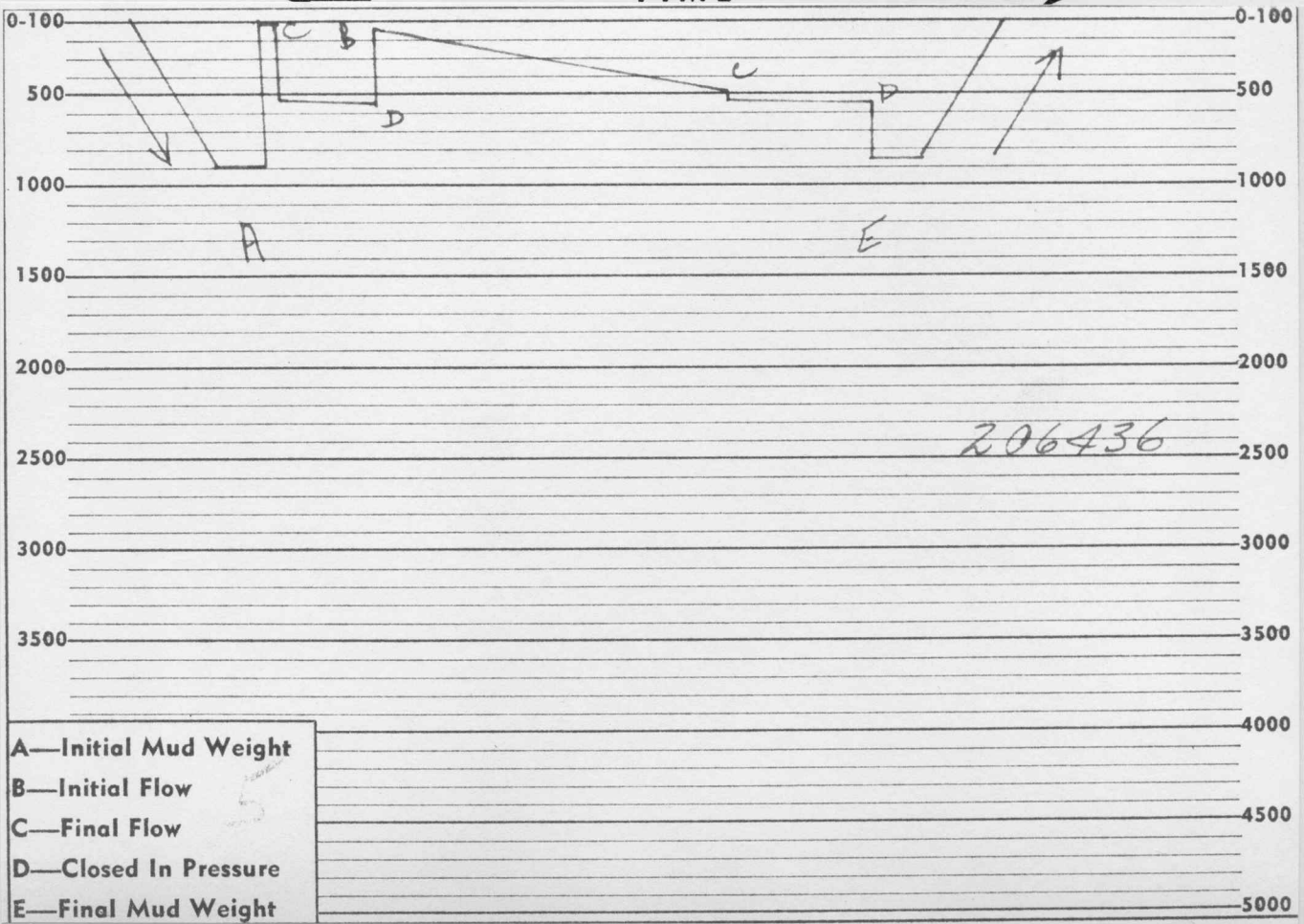
LOCATION 25-113-8E  
 FIELD YARBE  
 COUNTY RILEY  
 STATE KANSAS  
 LEASE NAME YARBE  
 WELL NO. 5  
 TEST NO. 2  
 LEASE OWNER CITIERS SERVICE OIL COMPANY  
 OWNERS DISTRICT KANSAS 25-11-8E



206436

PRESSURE

← TIME →



206436

- A—Initial Mud Weight
- B—Initial Flow 5
- C—Final Flow
- D—Closed In Pressure
- E—Final Mud Weight

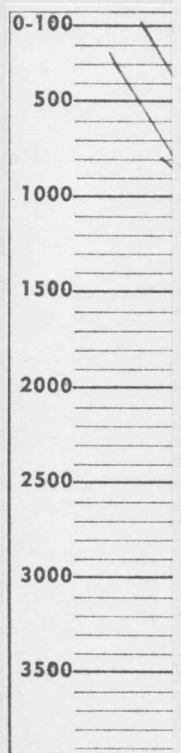
Each Horizontal Line Equal to 1000 p.s.i.

206436

Company CITIES SERVICE OIL COMPANY Date 6-29-59

	Time	PSI	Ticket No. 206436  Lease YAEGE Well No. 1 Test No. 2  BT No. 312 Depth 1689'  12 Hr. Clock No. 4205  Temperature Corrected to Actual 82 ° F
Initial Hydro Mud Pressure		859	
1st	Initial Flow	41	
	Final Flow	5 Minutes 117	
Initial Closed In Pressure	30 Minutes	568	
2nd	Initial Flow	144	
	Final Flow	60 Minutes 518	
Final Closed In Pressure	32 Minutes	570	
Final Hydro Mud Pressure		810	

PRESSURE



	1st Flow Pressure		Initial CIP		2nd Flow Pressure		Final CIP	
	Time Defl. .000"	PSI Temp. Corr.	Time Defl. .000"	PSI Temp. Corr.	Time Defl. .000"	PSI Temp. Corr.	Time Defl. .000"	PSI Temp. Corr.
PO	.000	41	.000	117	.000	144	.000	518
P1	.007	52	.0195	530	.100	303	.0205	554
P2	.014	72	.039	546	.200	414	.041	559
P3	.021	88	.0585	555	.300	480	.0615	562
P4	.028	102	.078	559	.400	518	.082	563
P5	.035	117	.0975	563			.1025	563
P6			.117	565			.123	564
P7			.1365	567			.1435	566
P8			.156	568			.164	567
P9			.1755	568			.1845	568
P10			.195	568			.205	570
	1	Minute Intervals	3	Minute Intervals	15	Minute Intervals	3.2	Minute Intervals

A—Initial M  
B—Initial Fl  
C—Final Flo  
D—Closed In  
E—Final Mu

Remarks:



Initial Closed In Time	30	Minutes			Date	6-30-59		
Tool Open Flow Period	2-60	Minutes			Ticket No.	210790		
Final Closed In Time	30	Minutes			HOWCO DISTRICT	El Dorado		
Depth Top Gauge	1704	Ft.			Blanked Off	No		
BT. P.R.D. No	291		12	Hr. Clock	CONTRACTOR	White and Ellis		
Pressure Readings	Field		Office Corrected		HOLE & TOOL DATA			
Initial Hydro Mud Pressure	863		852		Elevation	1355' KB	Top Packer Depth	1703'
Initial Closed in Pres.	592		578		Total Depth	1718'	Bottom Packer Depth	-
Initial Flow Pres.	32		42-64		Casing or Hole Size	7 7/8"	Size & Type Wall Packer	6 3/4" ESWP
Final Flow Pres.	547		55-538		Liner or Rathole Size	7 7/8"	Size Bottom Choke	7/8"
Final Closed in Pres.	592		577		Casing Perforations	Top Bottom	Size Surface Choke	1/4"
Final Hydro Mud Pressure	863		846		Interval Tested	1703-1718'	ID & Length Air Chamber	-
Depth Center Gauge	1713	Ft.	Blanked Off	Yes	Formation Tested	Hunton	ID & Length Drill Collars	2 3/8" x 28'
BT. P.R.D. No	1698		-	Hr. Clock	Est. Gauge Depth Temp.	Calc. 100 F°	Size Drill Pipe	3 1/2" IF
Pressure Readings	Field		Office Corrected		MUD DATA Weight	9.6	Viscosity	40
Initial Hydro Mud Pressure					All depths measured from	Kelly Bushing	No...Folders Reproduced	5
Initial Closed in Pres.					REMARKS: Opened tool 11:15 for 2 minute flow.			
Initial Flow Pres.					Rotated tool closed for a 30 minute Initial			
Final Flow Pres.					Closed in Pressure. Reopened tool with a			
Final Closed in Pres.					strong blow throughout test. Took a 30 min.			
Final Hydro Mud Pressure					Final Closed in Pressure.			
Depth Bottom Gauge		Ft.	Blanked Off					
BT. P.R.D. No				Hr. Clock				
Pressure Readings	Field		Office Corrected					
Initial Hydro Mud Pressure								
Initial Closed in Pres.					Recovered	1310	Feet of	Free oil
Initial Flow Pres.					Recovered	30	Feet of	Mud cut oil
Final Flow Pres.					Recovered	80	Feet of	Oil cut mud
Final Closed in Pres.					Recovered		Feet of	
Final Hydro Mud Pressure					Witnessed By	R. Valentine		
Amount-Type of Cushion					Tester	E. L. Sanders		

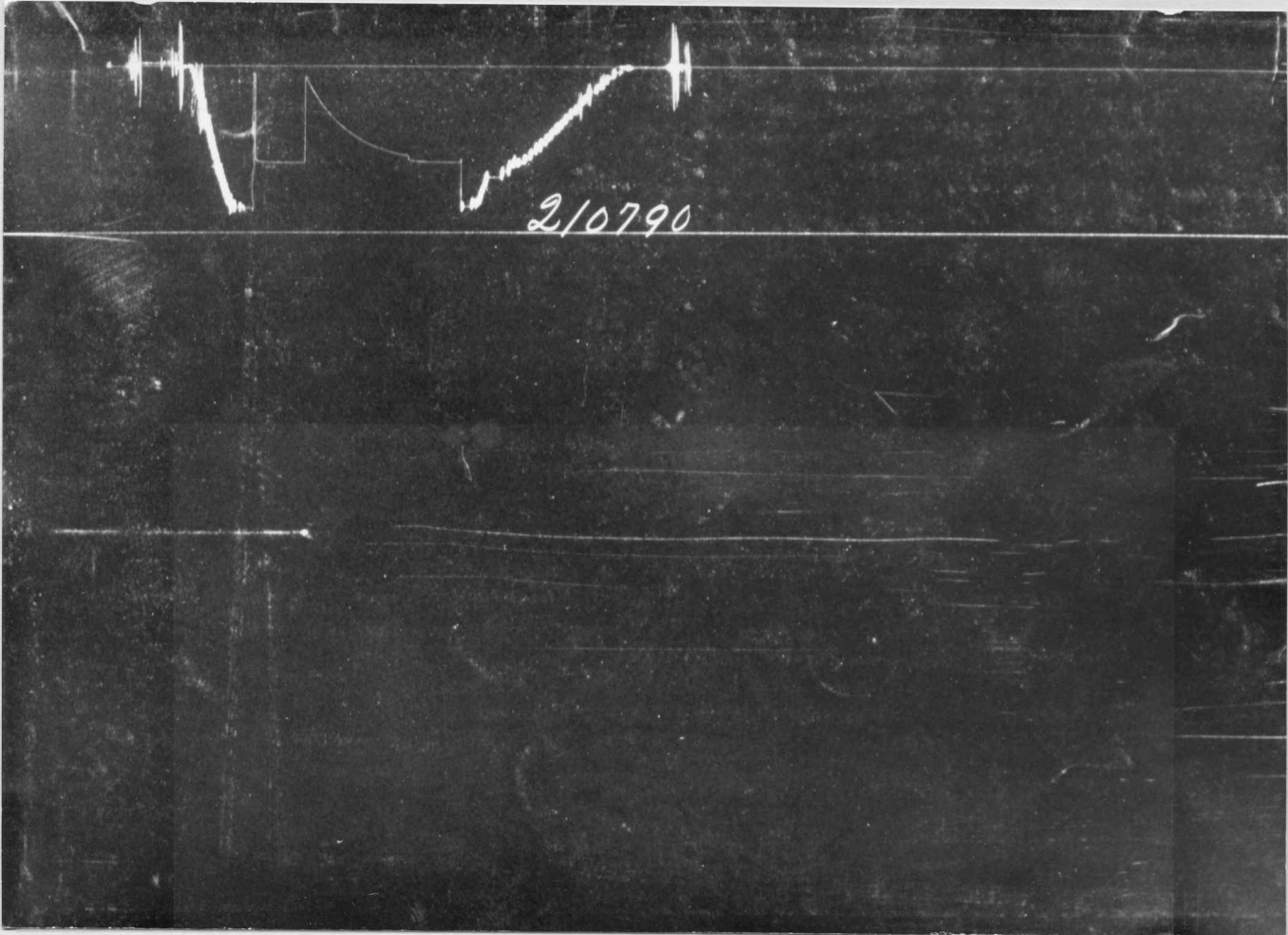
LOCATION 25-11-8E  
FIELD  
COUNTY RILEY  
STATE KANSAS

YAEGE  
LEASE NAME  
WELL NO. 5  
TEST NO. 3  
CITIES SERVICE OIL COMPANY  
LEASE OWNER  
MADISON  
OWNERS DISTRICT 25-11-8E

	Time	PSI	Ticket No. 210790  Lease YAEGE  Well No. 5 Test No. 3  BT No. 291 Depth 1704'  12 Hr. Clock No. 3229  Temperature Corrected to Calc. 100 ° F
Initial Hydro Mud Pressure		852	
1st	Initial Flow	42	
	Final Flow	2 Minutes 55	
Initial Closed In Pressure	30 Minutes	578	
2nd	Initial Flow	64	
	Final Flow	60 Minutes 538	
Final Closed In Pressure	30 Minutes	577	
Final Hydro Mud Pressure		846	

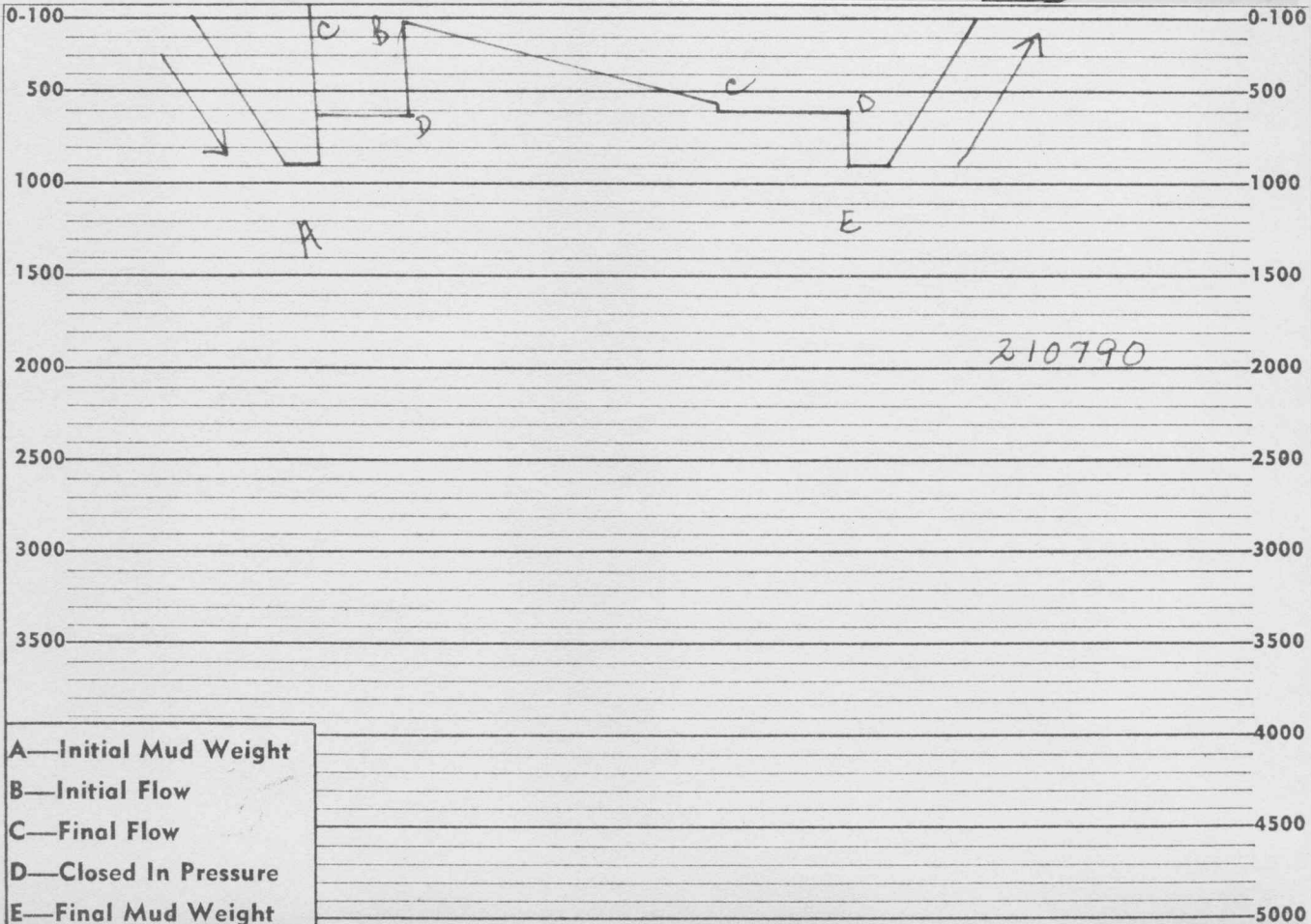
	1st Flow Pressure		Initial CIP		2nd Flow Pressure		Final CIP	
	Time Defl. .000"	PSI Temp. Corr.	Time Defl. .000"	PSI Temp. Corr.	Time Defl. .000"	PSI Temp. Corr.	Time Defl. .000"	PSI Temp. Corr.
PO			.000	55	.000	64	.000	538
P1			.020	572	.1035	297	.021	569
P2			.040	575	.207	427	.042	571
P3			.060	577	.3105	500	.063	572
P4			.080	578	.414	538	.084	574
P5			.100	578			.105	575
P6			.120	578			.126	575
P7			.140	578			.147	575
P8			.160	578			.168	577
P9			.180	578			.189	577
P10			.200	578			.210	577
	Minute Intervals		3	Minute Intervals	15	Minute Intervals	3	Minute Intervals

Remarks:



PRESSURE

← TIME →



- A—Initial Mud Weight
- B—Initial Flow
- C—Final Flow
- D—Closed In Pressure
- E—Final Mud Weight

Each Horizontal Line Equal to 1000 p.s.i.



Date 6-30-59  
 Ticket No. 210791  
 HOWCO DISTRICT El Dorado  
 Kind of Job Open Hole

LOCATION 25-11-8E  
 FIELD YABEE  
 COUNTY RILEY  
 STATE KANSAS

LEASE NAME  
 WELL NO. 5  
 TEST NO. 4  
 CITIES SERVICE OIL COMPANY  
 LEASE OWNER  
 MADISON OWNERS DISTRICT 25-11-8E

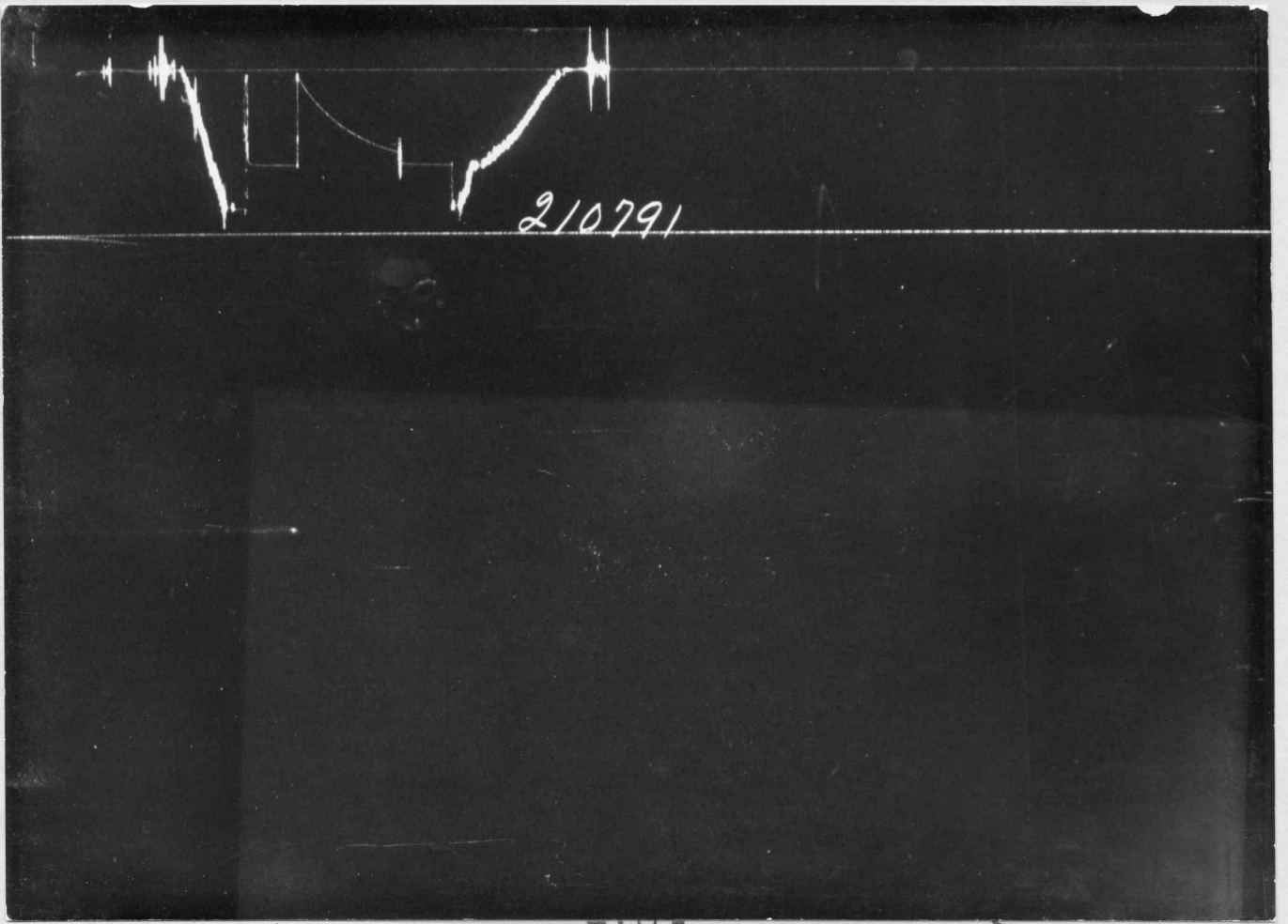
Initial Closed In Time	30	Minutes
Tool Open Flow Period	*60	Minutes
Final Closed In Time	30	Minutes
Depth Top Gauge	1720	Ft. Blanked Off No
BT. P.R.D. No	291	12 Hr. Clock
Pressure Readings	Field	Office Corrected
Initial Hydro Mud Pressure	865	846
Initial Closed in Pres.	592	581
Initial Flow Pres.	30	32-44
Final Flow Pres.	487	39-502
Final Closed in Pres.	492	581
Final Hydro Mud Pressure	-	833
Depth Center Gauge	1721	Ft. Blanked Off Yes
BT. P.R.D. No	1698	- Hr. Clock
Pressure Readings	Field	Office Corrected
Initial Hydro Mud Pressure		
Initial Closed in Pres.		
Initial Flow Pres.		
Final Flow Pres.		
Final Closed in Pres.		
Final Hydro Mud Pressure		
Depth Bottom Gauge		Ft. Blanked Off
BT. P.R.D. No		Hr. Clock
Pressure Readings	Field	Office Corrected
Initial Hydro Mud Pressure		
Initial Closed in Pres.		
Initial Flow Pres.		
Final Flow Pres.		
Final Closed in Pres.		
Final Hydro Mud Pressure		
Amount-Type of Cushion	-	

CONTRACTOR White and Ellis	
HOLE & TOOL DATA	
Elevation	1361'
Top Packer Depth	1718'
Total Depth	1727'
Bottom Packer Depth	-
Casing or Hole Size	7 7/8"
Size & Type Wall Packer	6 3/4" ESWP
Liner or Rathole Size	7 7/8"
Size Bottom Choke	7/8"
Casing Perforations	Top Bottom
Size Surface Choke	1/4"
Interval Tested	1718-1727'
ID & Length Air Chamber	-
Formation Tested	Hunton
ID & Length Drill Collars	2 3/8" x 28'
Est. Gauge Depth Temp.	Calc. 100 F°
Size Drill Pipe	3 1/2" IF.
MUD DATA Weight	9.4
Viscosity	37
All depths measured from	Kelly Bushing
No...Folders Reproduced	5
REMARKS: Opened tool for a flow pressure.	
Rotated tool closed for a 30 minute Initial	
Closed in Pressure. Reopened tool with a	
strong blow throughout test. Took a 30	
minute Final Closed in Pressure. *Time not	
given for First Flow Pressure.	
Recovered	1163 Feet of Free oil
Recovered	122 Feet of Oil cut mud
Recovered	Feet of
Recovered	Feet of
Witnessed By Warren Morris	
Tester	E. L. Sanders

	Time	PSI	
Initial Hydro Mud Pressure		846	Ticket No. 210791
1st Initial Flow		32	
1st Final Flow	*	39	Lease <b>YAEGE</b>
Initial Closed In Pressure	30 Minutes	581	Well No. 5 Test No. 4
2nd Initial Flow		44	BT No. 291 Depth 1720'
2nd Final Flow	60 Minutes	502	12 Hr. Clock No. 3229
Final Closed In Pressure	30 Minutes	581	Temperature Corrected to Calc. 100 ° F
Final Hydro Mud Pressure		833	

	1st Flow Pressure		Initial CIP		2nd Flow Pressure		Final CIP	
	Time Defl. .000"	PSI Temp. Corr.	Time Defl. .000"	PSI Temp. Corr.	Time Defl. .000"	PSI Temp. Corr.	Time Defl. .000"	PSI Temp. Corr.
PO			.000	39	.000	44		
P1			.020	575	.102	241		
P2			.040	578	.204	370		
P3			.060	580	.306	452		
P4			.080	581	.408	502		
P5			.100	581				
P6			.120	581				
P7			.140	581				
P8			.160	581				
P9			.180	581				
P10			.200	581				
		Minute Intervals	3	Minute Intervals	15	Minute Intervals		Minute Intervals

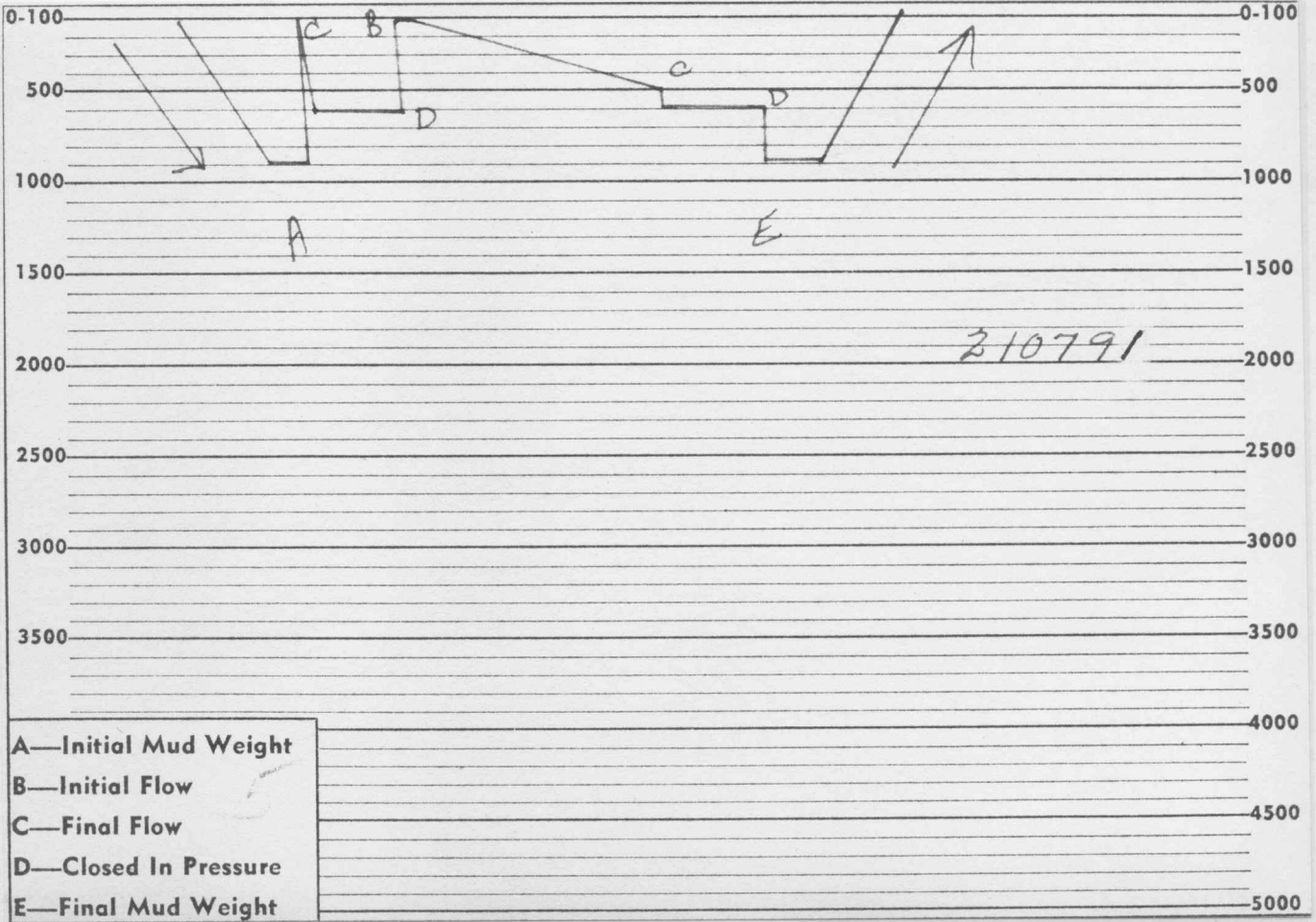
Remarks: \* Time not given.



210791

PRESSURE

← TIME →



210791

- A—Initial Mud Weight
- B—Initial Flow
- C—Final Flow
- D—Closed In Pressure
- E—Final Mud Weight

Each Horizontal Line Equal to 1000 p.s.i.