


GEHRT
 LEASE NAME
 1
 WELL NO.
 2
 TEST NO.
 CITIES SERVICE OIL COMPANY
 LEASE OWNER
 MADISON
 OWNERS DISTRICT
 25-11-8E

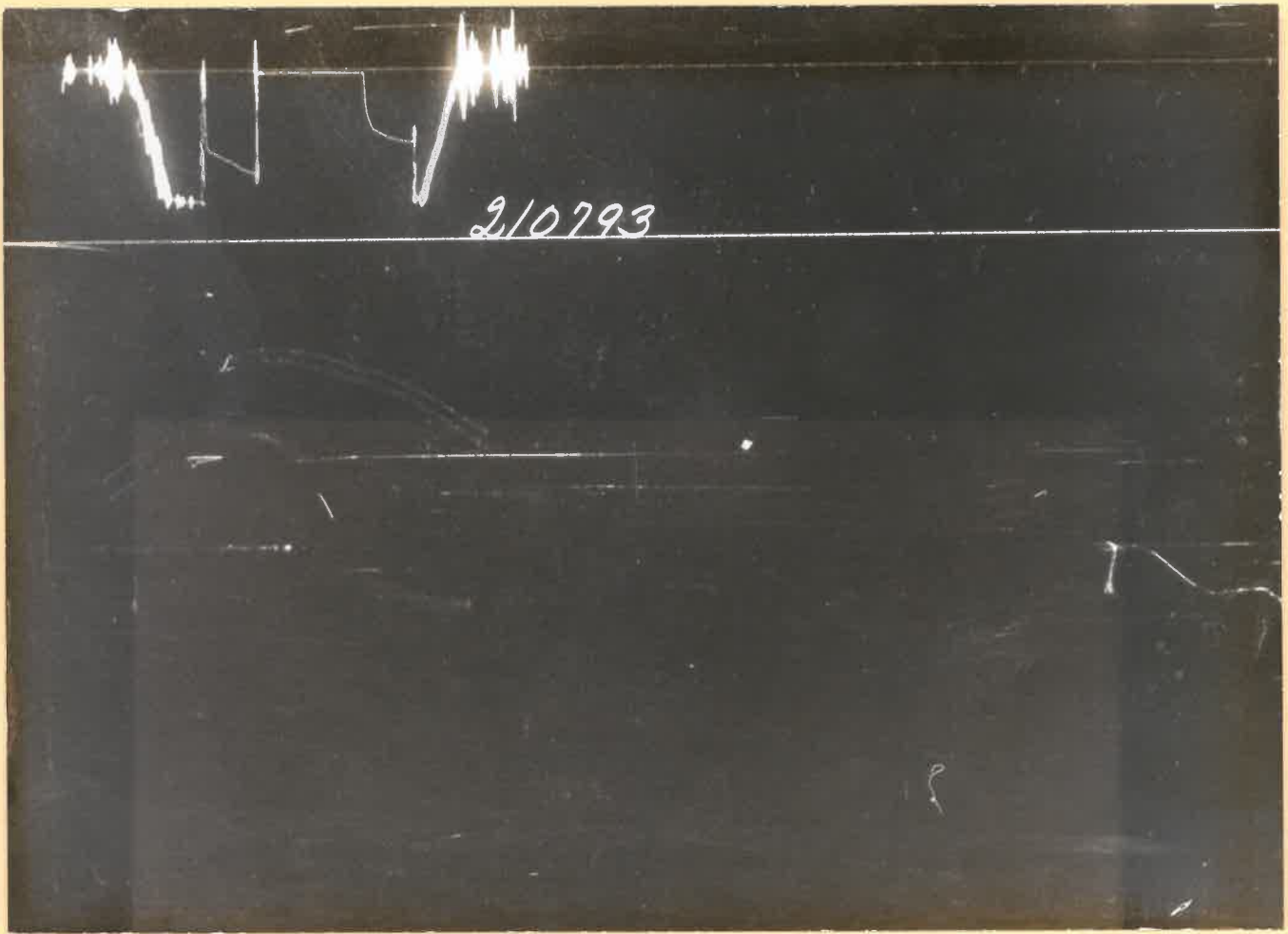
Initial Closed In Time	30	Minutes		Date	7-6-59	LOCATION SW SE NW 25-11-8E		
Tool Open Flow Period	2-60	Minutes		Ticket No.	210793			
Final Closed In Time	30	Minutes		HOWCO DISTRICT	El Dorado, Kansas			
Depth Top Gauge	1581 Ft.	Blanked Off		No	Kind of Job		Open Hole	
BT. P.R.D. No	291	12	Hr. Clock	CONTRACTOR	White and Ellis	FIELD YABEE COUNTY RILEY STATE KANSAS		
Pressure Readings	Field	Office Corrected		HOLE & TOOL DATA				
Initial Hydro Mud Pressure	785	771		Elevation	1297' KB		Top Packer Depth	1591'
Initial Closed in Pres.	605	610		Total Depth	1619'		Bottom Packer Depth	1598'
Initial Flow Pres.	15	18-18		Casing or Hole Size	7 7/8"		Size & Type Wall Packer	6 3/4" ESWP
Final Flow Pres.	32	18-24		Liner or Rathole Size	7 7/8"		Size Bottom Choke	7/8"
Final Closed in Pres.	455	430		Casing Perforations	Top Bottom		Size Surface Choke	1/4"
Final Hydro Mud Pressure	785	764		Interval Tested	1598-1619'		ID & Length Air Chamber	-
Depth Center Gauge	1614 Ft.	Blanked Off	Yes	Formation Tested	-		ID & Length Drill Collars	2 3/8" x 58'
BT. P.R.D. No	1698	-	Hr. Clock	Est. Gauge Depth Temp.	Actual 78 F°		Size Drill Pipe	3 1/2" IF
Pressure Readings	Field	Office Corrected		MUD DATA Weight	9.1	Viscosity	37	
Initial Hydro Mud Pressure				All depths measured from Kelly Bushing		No...Folders Reproduced	5	
Initial Closed in Pres.				REMARKS: Opened tool for a 2 minute flow.				
Initial Flow Pres.				Rotated tool closed 3:30 PM for a 30 minute				
Final Flow Pres.				Initial Closed in Pressure. Reopened tool				
Final Closed in Pres.				with a very weak blow dead in 8 minutes. Took				
Final Hydro Mud Pressure				a 30 minute Final Closed in Pressure.				
Depth Bottom Gauge	Ft.	Blanked Off						
BT. P.R.D. No			Hr. Clock					
Pressure Readings	Field	Office Corrected						
Initial Hydro Mud Pressure								
Initial Closed in Pres.				Recovered	5	Feet of	Free oil	
Initial Flow Pres.				Recovered	25	Feet of	Oil cut mud	
Final Flow Pres.				Recovered		Feet of		
Final Closed in Pres.				Recovered		Feet of		
Final Hydro Mud Pressure				Witnessed By Mr. W. Morris - Mr. R. Valentine				
Amount-Type of Cushion	-			Tester	E. L. Sanders			

5

	Time	PSI	Ticket No. 210793 Lease GEHRT Well No. 1 Test No. 2 BT No. 291 Depth. 1581' 12 Hr. Clock No. 3229 Temperature Corrected to Actual 78° F
Initial Hydro Mud Pressure		771	
1st	Initial Flow	18	
	Final Flow	18	
	2 Minutes		
Initial Closed In Pressure	30 Minutes	610	
2nd	Initial Flow	18	
	Final Flow	24	
	60 Minutes		
Final Closed In Pressure	30 Minutes	430	
Final Hydro Mud Pressure		764	

	1st Flow Pressure		Initial CIP		2nd Flow Pressure		Final CIP	
	Time Defl. .000"	PSI Temp. Corr.	Time Defl. .000"	PSI Temp. Corr.	Time Defl. .000"	PSI Temp. Corr.	Time Defl. .000"	PSI Temp. Corr.
P0			.000	18	.000	18	.000	24
P1			.020	480	.418	24	.020	305
P2			.040	495			.040	362
P3			.060	512			.060	377
P4			.080	524			.080	391
P5			.100	533			.100	403
P6			.120	556			.120	411
P7			.140	578			.140	418
P8			.160	592			.160	426
P9			.180	602			.180	429
P10			.200	610			.200	430
		Minute Intervals	3	Minute Intervals		Minute Intervals	3	Minute Intervals

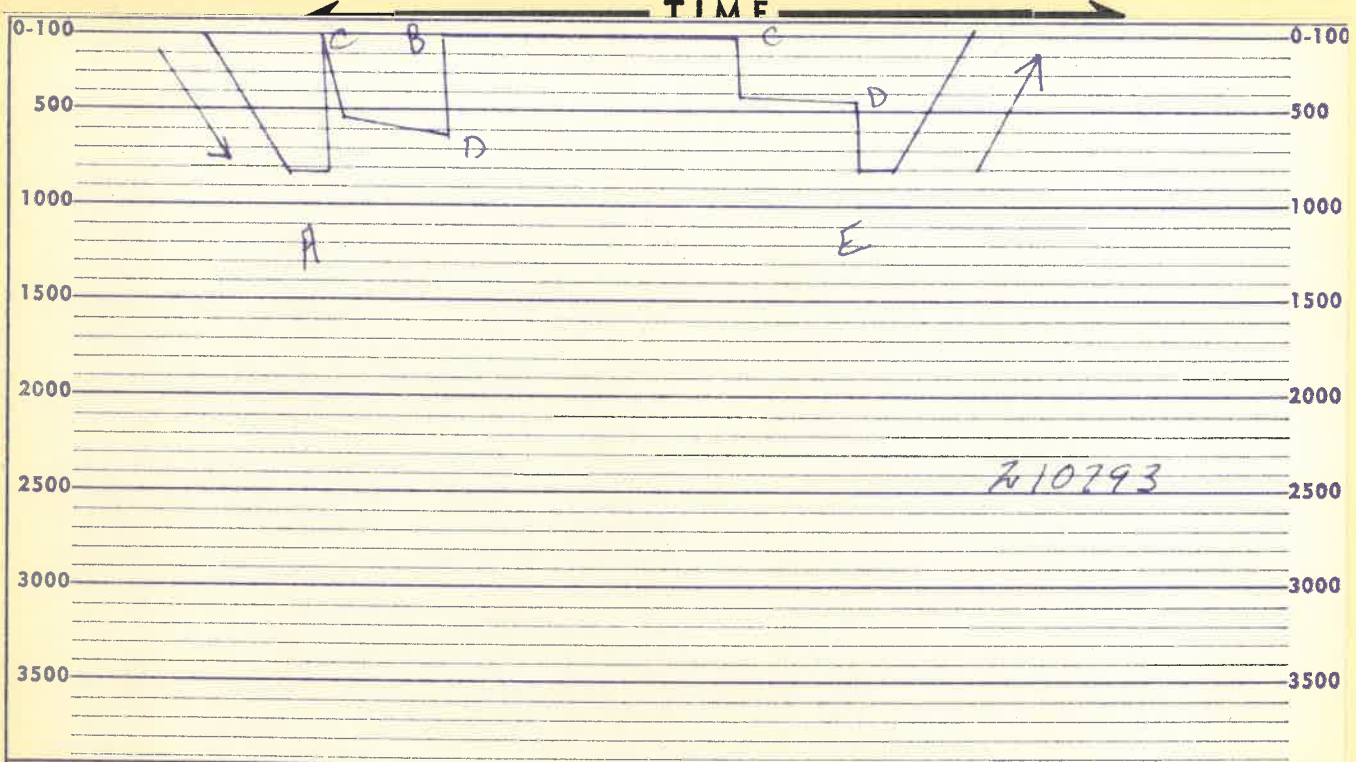
Remarks:



210793

PRESSURE

TIME



210793

- A—Initial Mud Weight
- B—Initial Flow
- C—Final Flow
- D—Closed In Pressure
- E—Final Mud Weight

Each Horizontal Line Equal to 1000 psi

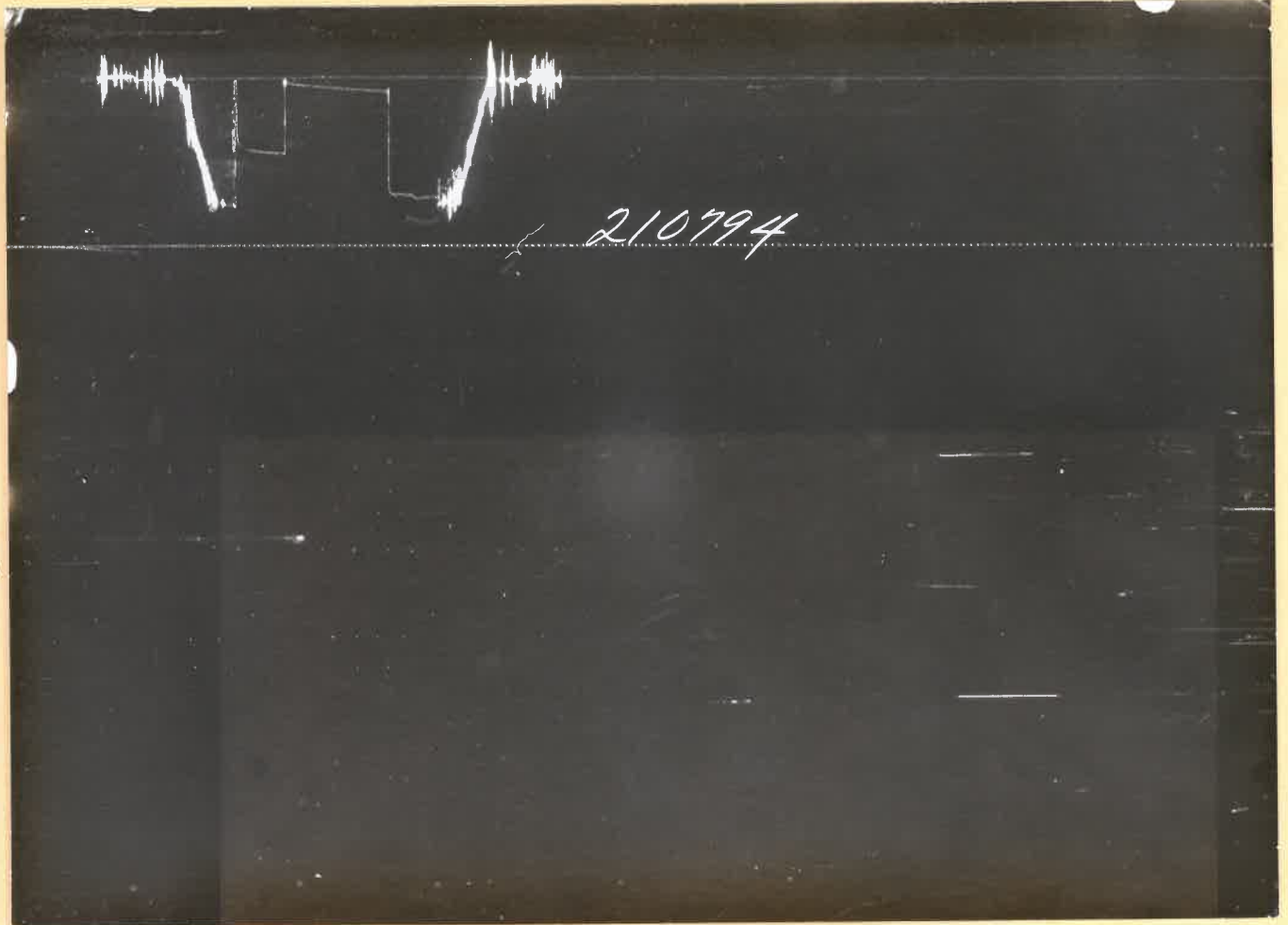
Initial Closed In Time 30	Minutes		Date 7-6-59
Tool Open Flow Period 2 - 60	Minutes		Ticket No. 210794
Final Closed In Time 30	Minutes		HOWCO DISTRICT El Dorado, Kansas
Depth Top Gauge 1574	Ft.	Blanked Off no	Kind of Job Open Hole Test
BT. P.R.D. No 291	12	Hr. Clock	CONTRACTOR White & Ellis
Pressure Readings	Field	Office Corrected	HOLE & TOOL DATA
Initial Hydro Mud Pressure 785	765		Elevation 1297' K.B. Top Packer Depth 1584'
Initial Closed in Pres. 490	455		Total Depth 1619' Bottom Packer Depth 1598'
Initial Flow Pres. 32	9-11		Casing or Hole Size 7 7/8" Size & Type Wall Packer 6 3/4" ESA
Final Flow Pres. 95	9-73		Liner or Rathole Size 7 7/8" Size Bottom Choke 7/8"
Final Closed in Pres. -	720		Casing Perforations Top Bottom Size Surface Choke 1/4"
Final Hydro Mud Pressure -	759		Interval Tested 1584'-1598' ID & Length Air Chamber -
Depth Center Gauge	Ft.	Blanked Off	Formation Tested Hunton ID & Length Drill Collars 2 3/8" x 58
BT. P.R.D. No		Hr. Clock	Est. Gauge Depth Temp. ACTUAL 178 F° Size Drill Pipe 3 1/2" I.F.
Pressure Readings	Field	Office Corrected	MUD DATA Weight 9.1 Viscosity 37
Initial Hydro Mud Pressure			All depths measured from Kelly Bushing No. Folders Reproduced 5
Initial Closed in Pres.			REMARKS: Tool opened for 2 minutes Initial flow. Rotated tool for 30 Minutes Initial closed in pressure. Reopened tool with a light blow.
Initial Flow Pres.			
Final Flow Pres.			
Final Closed in Pres.			
Final Hydro Mud Pressure			
Depth Bottom Gauge 1614	Ft.	Blanked Off yes	
BT. P.R.D. No 1698	12	Hr. Clock	
Pressure Readings	Field	Office Corrected	
Initial Hydro Mud Pressure			
Initial Closed in Pres.			Recovered 120 Feet of free oil
Initial Flow Pres.			Recovered 65 Feet of oil cut mud
Final Flow Pres.			Recovered Feet of
Final Closed in Pres.			Recovered Feet of
Final Hydro Mud Pressure			Witnessed By R. Valentine
Amount-Type of Cushion -			Tester E. L. Sanders

GEHRT
 LEASE NAME
 SEC. 25-11-8E
 WELL NO. 1
 TEST NO. 3
 CITIES SERVICE OIL COMPANY
 LEASE OWNER
 COUNTY RILEY
 STATE KANSAS
 MADISON
 OWNERS DISTRICT
 25-11-8E

	Time	PSI	Ticket No. 210794 Lease GEHRT Well No. 1 Test No. 3 BT No. 291 Depth 1574' 12 Hr. Clock No. 3229 Temperature Corrected to Actual 178. F
Initial Hydro Mud Pressure		765	
1st	Initial Flow	9	
	Final Flow	2 Minutes 9	
Initial Closed In Pressure	30 Minutes	455	
2nd	Initial Flow	11	
	Final Flow	60 Minutes 73	
Final Closed In Pressure	30 Minutes	720	
Final Hydro Mud Pressure		759	

	1st Flow Pressure		Initial CIP		2nd Flow Pressure		Final CIP	
	Time Defl. .000"	PSI Temp. Corr.	Time Defl. .000"	PSI Temp. Corr.	Time Defl. .000"	PSI Temp. Corr.	Time Defl. .000"	PSI Temp. Corr.
P0			.000	9	.000	11		
P1			.020	412	.106	39		
P2			.040	429	.212	53		
P3			.060	436	.318	64		
P4			.080	442	.424	73		
P5			.100	445				
P6			.120	450				
P7			.140	451				
P8			.160	455				
P9			.180	455				
P10			.200	455				
		Minute Intervals	3	Minute Intervals	15	Minute Intervals		Minute Intervals

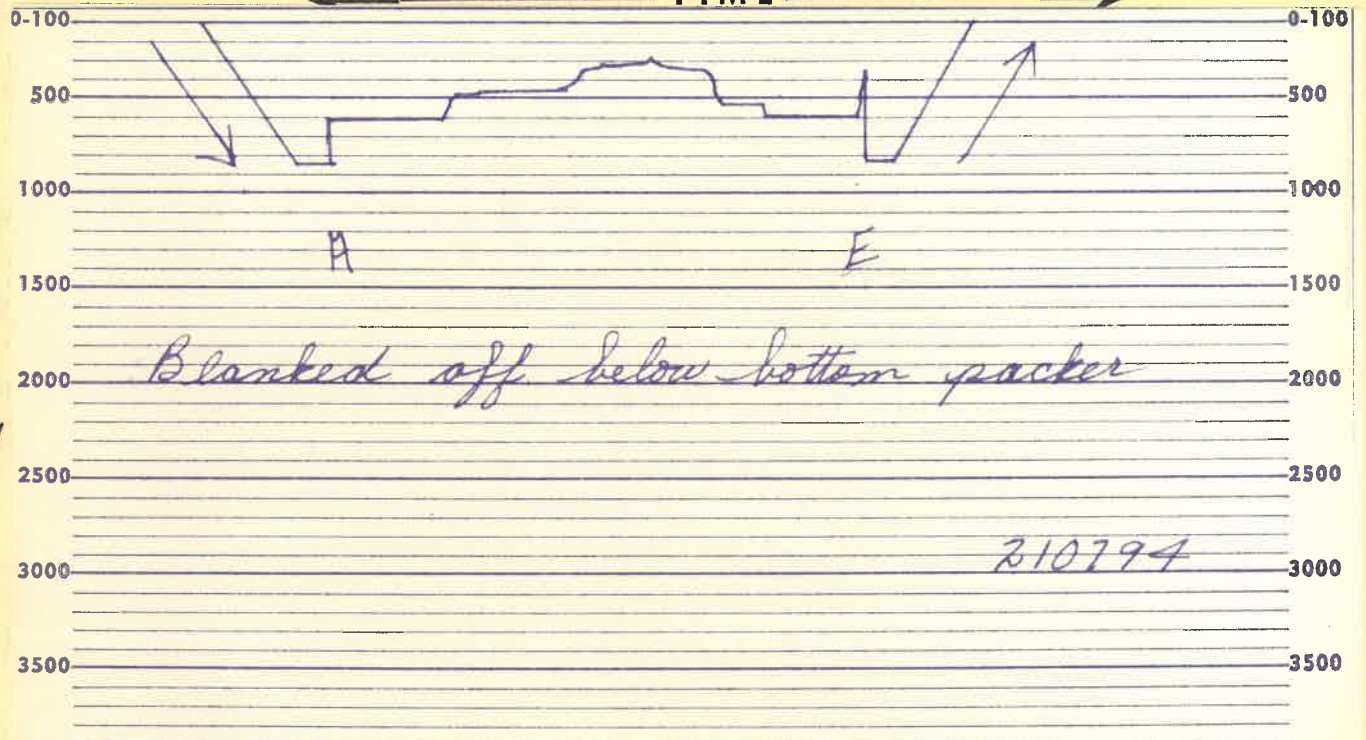
Remarks:



210794

PRESSURE

TIME




Blanked off below bottom packer

210794

- A—Initial Mud Weight
- B—Initial Flow
- C—Final Flow
- D—Closed In Pressure
- E—Final Mud Weight

Each Horizontal Line Equal to 1000 p.s.i.

Initial Closed In Time	30	Minutes		Date	7-8-59	
Tool Open Flow Period	5-60	Minutes		Ticket No.	210796	
Final Closed In Time	30	Minutes		HOWCO DISTRICT	El Dorado	
Depth Top Gauge	1620	Ft. Blanked Off No		Kind of Job	Open Hole	
BT. P.R.D. No	291	12 Hr. Clock	CONTRACTOR	White and Ellis Drilling Co.		
Pressure Readings	Field	Office Corrected	HOLE & TOOL DATA			
Initial Hydro Mud Pressure	-	797	Elevation	1297' KB	Top Packer Depth 1619'	
Initial Closed in Pres.	-	569	Total Depth	1649'	Bottom Packer Depth -	
Initial Flow Pres.	-	20-52	Casing or Hole Size	7 7/8"	Size & Type Wall Packer 6 3/4" ESWP	
Final Flow Pres.	-	45-239	Liner or Rathole Size	7 7/8"	Size Bottom Choke 7/8"	
Final Closed in Pres.	-	559	Casing Perforations	Top Bottom	Size Surface Choke 1/4"	
Final Hydro Mud Pressure	-	788	Interval Tested	1619-1649'	ID & Length Air Chamber -	
Depth Center Gauge	1644	Ft. Blanked Off Yes	Formation Tested	Hunton	ID & Length Drill Collars 2 3/8" x 58'	
BT. P.R.D. No	1698	- Hr. Clock	Est. Gauge Depth Temp.	Calc. 100 F°	Size Drill Pipe 3 1/2" IF	
Pressure Readings	Field	Office Corrected	MUD DATA Weight	9.1	Viscosity 33	
Initial Hydro Mud Pressure			All depths measured from	Kelly Bushing	No. Folders Reproduced 5	
Initial Closed in Pres.			REMARKS: Opened tool 10:20 PM for a 5 minute			
Initial Flow Pres.			flow. Rotated tool closed for a 30			
Final Flow Pres.			minute Initial Closed in Pressure. Reopened			
Final Closed in Pres.			tool with a strong blow throughout test.			
Final Hydro Mud Pressure			Took a 30 minute Final Closed in Pressure.			
Depth Bottom Gauge		Ft. Blanked Off				
BT. P.R.D. No		Hr. Clock				
Pressure Readings	Field	Office Corrected				
Initial Hydro Mud Pressure						
Initial Closed in Pres.			Recovered	285	Feet of Free Oil	
Initial Flow Pres.			Recovered	108	Feet of Mud Cut Oil	
Final Flow Pres.			Recovered	207	Feet of Oil Cut Mud	
Final Closed in Pres.			Recovered		Feet of	
Final Hydro Mud Pressure			Witnessed By R. Valentine and Mr. Dixon			
Amount-Type of Cushion			Tester E. L. Sanders			

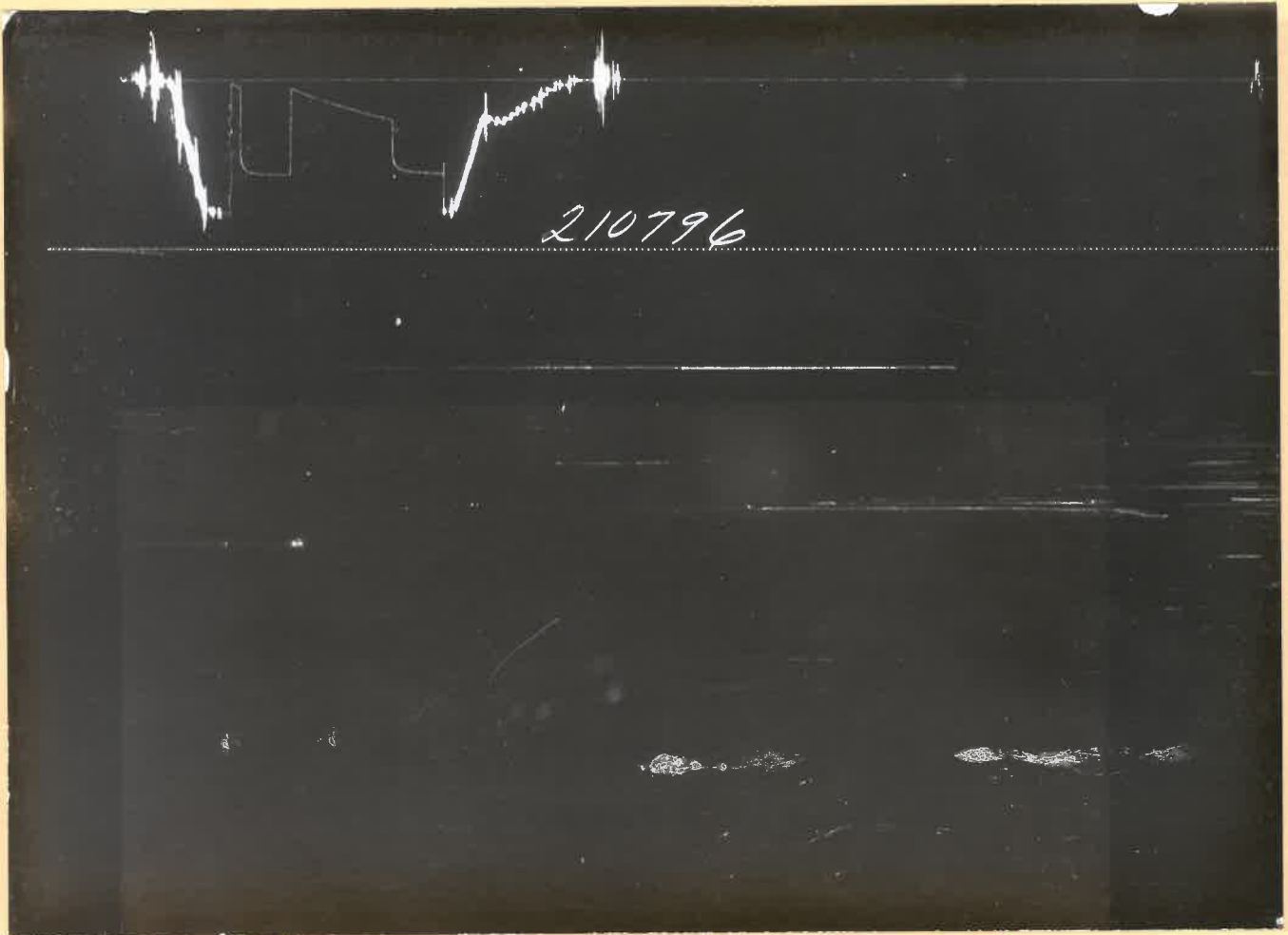
LOCATION 25-11-8E
 FIELD
 TAEGE
 COUNTY RILEY
 STATE KANSAS

OPERATOR
 LEASE NAME
 WELL NO. 1
 TEST NO. 4
 LEASE OWNER
 CITIES SERVICE OIL COMPANY
 OWNERS DISTRICT
 MADISON 25-11-8E

	Time	PSI	
Initial Hydro Mud Pressure		797	Ticket No. 210796
1st	Initial Flow	20	
	Final Flow	5 minutes	45
Initial Closed In Pressure	30 minutes	569	Lease GEHRT
2nd	Initial Flow	52	Well No. 1 Test No. 4
	Final Flow	60 minutes	239
Final Closed In Pressure	30 minutes	559	BT No. 291 Depth 1620'
Final Hydro Mud Pressure		788	12 Hr. Clock No. 3229
			Temperature Corrected to Calc. 100 ° F

	1st Flow Pressure		Initial CIP		2nd Flow Pressure		Final CIP	
	Time Defl. .000"	PSI Temp. Corr.	Time Defl. .000"	PSI Temp. Corr.	Time Defl. .000"	PSI Temp. Corr.	Time Defl. .000"	PSI Temp. Corr.
PO	.000	20	.000	45	.000	52	.000	239
P1	.007	23	.020	539	.1035	111	.021	527
P2	.014	30	.040	554	.207	158	.042	540
P3	.021	35	.060	562	.3105	202	.063	547
P4	.028	41	.080	565	.414	239	.084	551
P5	.035	45	.100	566			.105	554
P6			.120	568			.126	556
P7			.140	569			.147	557
P8			.160	569			.168	559
P9			.180	569			.189	559
P10			.200	569			.210	559
	1	Minute Intervals	3	Minute Intervals	15	Minute Intervals	3	Minute Intervals

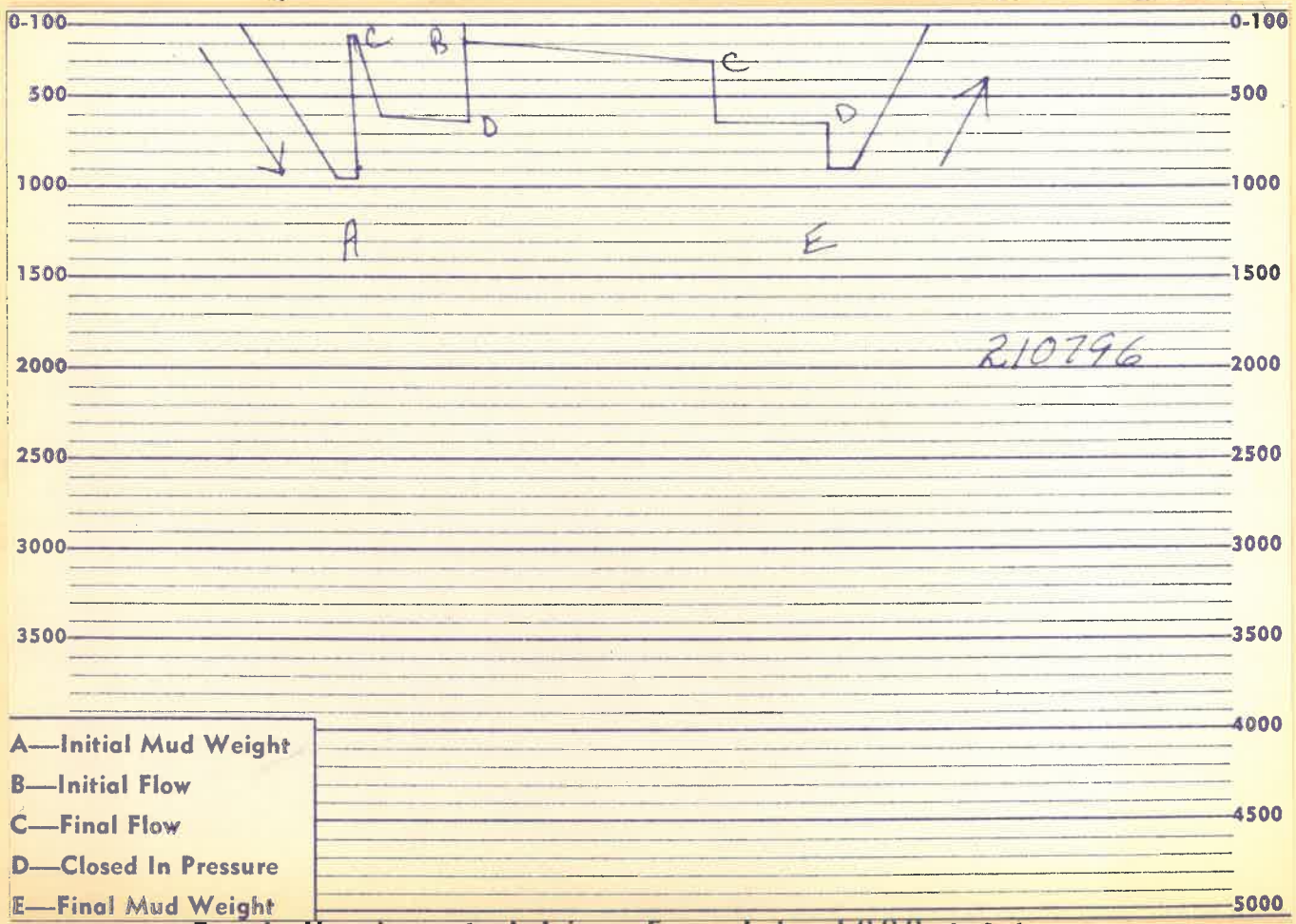
Remarks:



210796

PRESSURE

← TIME →



210796

- A—Initial Mud Weight
- B—Initial Flow
- C—Final Flow
- D—Closed In Pressure
- E—Final Mud Weight

Each Horizontal Line Equal to 1000 p.s.i.