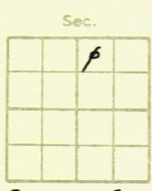


E 24 S 12 T 21

Johnson
County
Hendricks Farm No. 1
E.R. Hendricks Company



Twp.

6	5	4	3	2	1
7	8	9	10	11	X
18	17	16	15	14	13
19	20	21	22	23	24
30	29	28	27	26	25
31	32	33	34	35	36

CNW NE

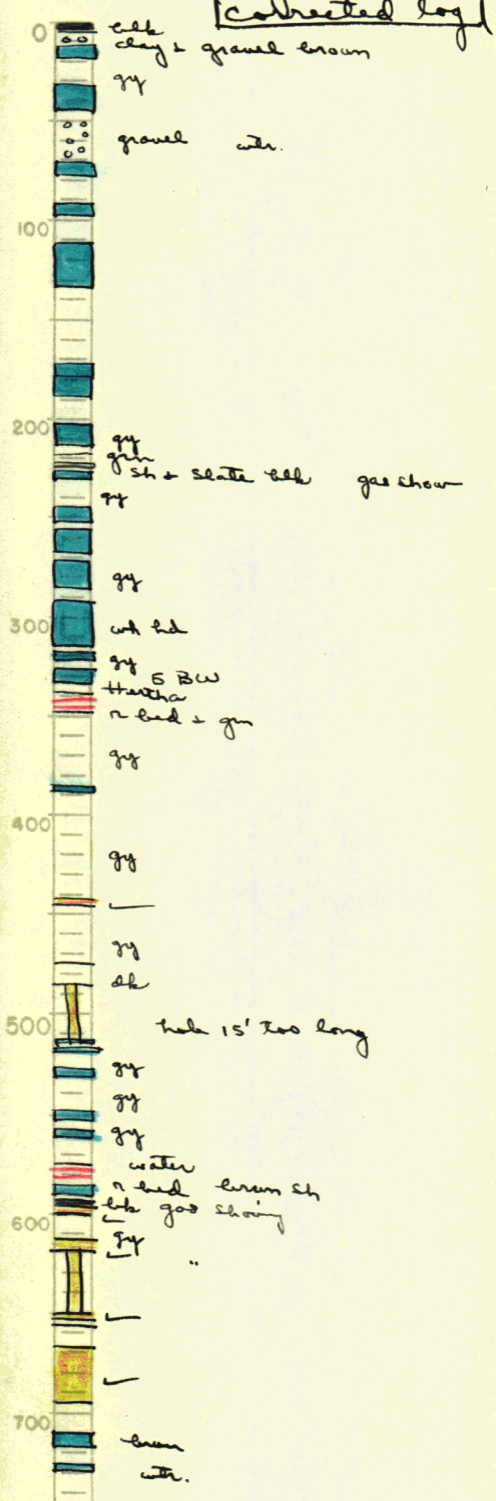
Elev. _____ T.D. 830

Date Drilled 12/3/41

Correlation by _____

Prod. Dry

Collected Log



800

900

1.0
D.