

28-13-12E *Ind*

SIDE ONE

STATE CORPORATION COMMISSION OF KANSAS
OIL & GAS CONSERVATION DIVISION
WELL COMPLETION OR RECOMPLETION FORM
ACO-1 WELL HISTORY
DESCRIPTION OF WELL AND LEASE

API NO. 15-15-197-20,221
County... Wabaunsee
SW SW NW Sec. 28 Twp. 13S Rge. 12E ~~12E~~ East

Operator: License # 3128
Name FMF Oil & Gas Properties, Inc.
Address 200 W. Douglas, Suite 700
Wichita, Kansas 67202
City/State/Zip

2970 Ft North from Southeast Corner of Section
4950 Ft West from Southeast Corner of Section
(Note: Locate well in section plat below)

Purchaser N/A

Lease Name Sorrick Well # 1

Operator Contact Person Jim Brandt
Phone 316 267-4335

Field Name

Producing Formation N/A

Elevation: Ground 1358 KB 1363

Contractor: License # 5840
Name Brandt Drilling Company, Inc.

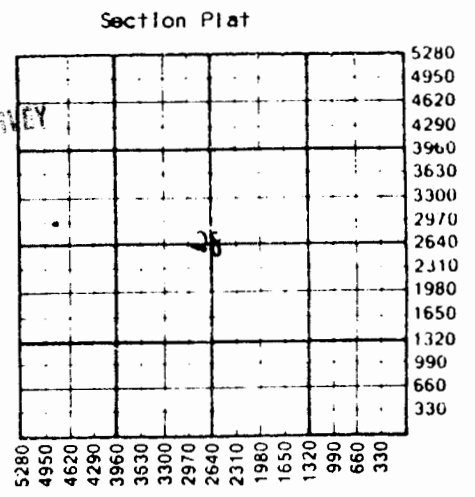
Wellsite Geologist Bob Gebhart
Phone (316) 267-7209

KANSAS GEOLOGICAL SURVEY
WATER RESOURCES BOARD

Designate Type of Completion
 New Well Re-Entry Workover
 Oil SWD Temp Abd
 Gas Inj Delayed Comp.
 Dry Other (Core, Water Supply etc.)

FEB 04 1988

If **OWWO**: old well info as follows:
Operator
Well Name
Comp. Date Old Total Depth



WATER SUPPLY INFORMATION
Disposition of Produced Water: Disposal
Docket # Repressuring

WELL HISTORY
Drilling Method:
 Mud Rotary Air Rotary Cable

11-4-87 1-14-87 1-15-87
Spud Date Date Reached TD Completion Date
3321
Total Depth PBSD

Questions on this portion of the ACO-1 call:
Water Resources Board (913) 296-3717
Source of Water:
Division of Water Resources Permit #
 Groundwater Ft North from Southeast Corner
(Well) Ft West from Southeast Corner of
Sec Twp Rge East West
 Surface Water Ft North from Southeast Corner
(Stream, pond etc) Ft West from Southeast Corner
Sec Twp Rge East West
 Other (explain) Isndowners pond
(purchased from city, R.W.D. #)

Amount of Surface Pipe Set and Cemented at 300 feet
Multiple Stage Cementing Collar Used? Yes No
If yes, show depth set feet
If alternate 2 completion, cement circulated
from feet depth to w/SX cmt
Cement Company Name United Cementing
Invoice #

Triplicate

INSTRUCTIONS: This form shall be completed in duplicate and filed with the Kansas Corporation Commission, 200 Colorado Derby Building, Wichita, Kansas 67202, within 90 days after completion or recompletion of any well. Rule 82-3-130 and 82-3-107 apply.
Information on side two of this form will be held confidential for a period of 12 months if requested in writing and submitted with the form. See rule 82-3-107 for confidentiality in excess of 12 months.
One copy of all wireline logs and drillers time log shall be attached with this form. Submit CP-4 form with all plugged wells. Submit CP-111 form with all temporarily abandoned wells.

Operator Name FMF Oil & Gas Properties Lease Name... Sarrick Well #..... 1...

Sec. 25 Twp. 13S Rge. 11 East West County... Wabaunsee

WELL LOG

INSTRUCTIONS: Show important tops and base of formations penetrated. Detail all cores. Report all drill stem tests giving interval tested, time tool open and closed, flowing and shut-in pressures, whether shut-in pressure reached static level, hydrostatic pressures, bottom hole temperature, fluid recovery, and flow rates if gas to surface during test. Attach extra sheet if more space is needed. Attach copy of log.

Drill Stem Tests Taken Yes No
 Samples Sent to Geological Survey Yes No
 Cores Taken Yes No

Formation Description
 Log Sample

Name	Top	Bottom
Surface gravel	0	300
Shale	300	900
Shale & Sand	900	1450
Shale & Lime	1450	2320
Shale	2320	2560
Lime	2560	2850
Shale	2850	3000
Dolomite	3000	3150
Lime	3150	3321

CASING RECORD New Used

Report all strings set-conductor, surface, intermediate, production, etc.

Purpose of String	Size Hole Drilled	Size Casing Set (in O.D.)	Weight Lbs/Ft.	Setting Depth	Type of Cement	#Sacks Used	Type and Percent Additives
Surface	12 1/4	8 5/8	20	300	Poz	170	2%/3%
.....
.....
.....

PERFORATION RECORD

Acid, Fracture, Shot, Cement Squeeze Record

Shots Per Foot	Specify Footage of Each Interval Perforated	(Amount and Kind of Material Used)	Depth
.....
.....
.....
.....

TUBING RECORD Size Set At Packer at Liner Run Yes No

Date of First Production Producing Method Flowing Pumping Gas Lift Other (explain).....