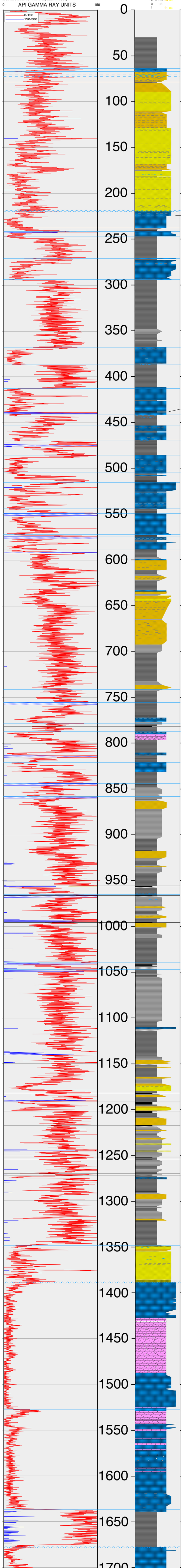


Kansas Geological Survey Douglas County Core Hole #1

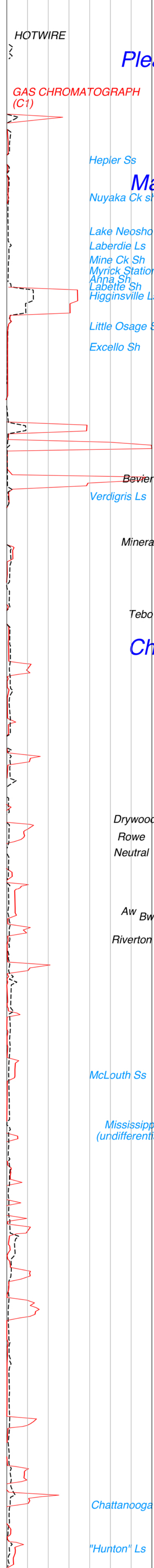


ls ls ls
m w p
c sh slt ss ss
a slt
l
fm cs

Robbins Sh
Haskell Ls
Westphalia Ls(?)
Tonganoxie Ss
Douglas Gp
Tonganoxie Ss
South Bend Ls
Rock Lake Sh
Stoner Ls
Eudora Sh
Captain Ck Ls
Lansing Gp
Vilas Sh
Plattsburg Ls
Lane Sh
Wyandotte Ls
Lane Sh
Raytown Ls
Muncie Ck Sh } **Iola Ls**
Paola Ls
Chanute Sh
Dewey Ls
Kansas City Gp
Quivera Sh
Westerville Ls
Wea Sh
Block Ls
Fontana Sh
Winterset Ls
Stark Sh
Bethany Falls Ls
Hushpuckney Sh
Sniabar Ls
Mound City Sh
Critzler Ls

MUD GAS

units
0 (courtesy of GeoCertified) 700



Viola Ls(?)
Simpson Gp(?)
Arbuckle Gp(?)