



# OILFIELD RESEARCH LABORATORIES

P. O. BOX 647 - CHANUTE, KANSAS 66720 - PHONE (316) 431-2650

December 30, 1986

Kansas Oil Properties, Inc.  
R. 3, Box 189A  
Baldwin City, KS 66006

Gentlemen:

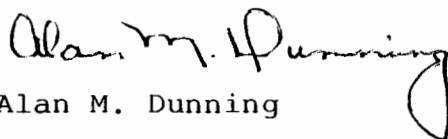
Attached hereto are the results of tests run on the rotary core taken from the Shephard II Lease, Well No. 3, located in Section 13, T14S, R20E, Douglas County, Kansas.

The core was sampled and sealed in plastic bags by a representative of the client and submitted to our laboratory on December 23, 1986.

Your business is greatly appreciated.

Very truly yours,

OILFIELD RESEARCH LABORATORIES

  
Alan M. Dunning

AMD:bl

5 c to Baldwin City, KS

LOG

Company Kansas Oil Properties, Inc. Lease Shephard II Well No. 3

SECOND SQUIRREL SANDSTONE

<u>Depth Interval, Feet</u>	<u>Description</u>
725.0 - 729.6	Sandstone, brown.
729.6 - 729.8	Sandstone, brown with scattered shale nodules.
729.8 - 730.7	Sandstone, brown.
730.7 - 732.0	Sandstone, brown with scattered shale and mica partings.
732.0 - 732.7	Sandstone, brown with scattered shale, mica, and carbonaceous partings.
732.7 - 738.0	Sandstone, brown.
738.0 - 739.0	Sandstone, brown with widely scattered shale, mica and carbonaceous partings.
739.0 - 740.0	Sandstone, brown.
740.0 - 740.7	Sandstone, brown with scattered shale and mica partings.
740.7 - 742.8	Sandstone, brown.
742.8 - 743.7	Sandstone, brown with scattered shale and carbonaceous partings and coal inclusions.
743.7 - 745.1	Sandstone, brown.

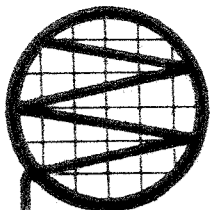
# Oilfield Research Laboratories

## RESULTS OF SATURATION & PERMEABILITY TESTS

**TABLE 1**

Company Kansas Oil Properties, Inc. Lease Shephard II Well No. 3

Sample No.	Depth, Feet	Porosity Percent	Percent Saturation			Stock Tank Barrels per Acre Foot	Permeability, Millidarcys
			Oil	Water	Total		
1	725.5	26.1	45	22	67	1504	81.
2	726.5	25.7	39	29	68	1348	61.
3	727.5	24.8	41	31	72	1264	70.
4	728.5	25.6	37	36	73	1211	38.
5	729.5	26.5	38	27	65	1429	79.
6	730.5	25.2	43	31	74	1285	201.
7	731.5	24.3	38	34	72	1185	30.
8	732.4	25.2	36	32	68	1266	35.
9	733.5	25.3	38	32	70	1271	56.
10	734.5	24.7	36	35	71	1186	161.
11	735.5	26.3	36	31	67	1341	76.
12	736.5	23.7	43	32	75	1191	39.
13	737.5	26.2	35	32	67	1314	32.
14	738.5	26.1	37	32	69	1311	195.
15	739.5	24.1	46	37	83	1122	58.
16	740.5	26.3	42	35	77	1263	87.
17	741.5	20.6	37	44	81	851	58.
18	742.5	23.8	39	37	76	1108	74.
19	743.5	24.4	37	33	70	1208	33.
20	744.5	25.7	36	31	67	1310	199.



MIDWEST SURVEYS

LOGGING • PERFORATING • CONSULTING SERVICES

Return to office

FILING NO.

COMPANY KANSAS OIL PUMPPERS, INC.

WELL NO. 3

FIELD SHEPPARD LEASE

COUNTY DOUGLAS

STATE KANSAS

LOCATION: 3465 0 FSL  
2805.0 FEL

SEC 13 TWP 14S RGE 20E

PERMANENT DATUM: G.L. ELEV. NA  
LOG MEASURED FROM: G.L. FT. ABOVE PERM. DATUM  
DRILLING MEASURED FROM: G.L.

OTHER SERVICES:  
CCL  
NA  
NA  
NA

DATE	1/2/87	1/2/87
RUN NO.	1 NW	1 NW
TYPE LOG	GAMMA RAY	NEUTRON
DEPTH—DRILLER	NA	NA
DEPTH—LOGGER	789.0	789.0
BOTTOM LOGGED INTERVAL	780.0	788.0
TOP LOGGED INTERVAL	50.0	58.0
TYPE FLUID IN HOLE	WATER	WATER
SALINITY, PPM CL.	NA	NA
DENSITY	NA	NA
LEVEL	FULL	FULL
MAX. REC. TEMP., DEG. F.	NA	NA
OPERATING RIG TIME	NA	NA
RECORDED BY	S. WINDISCH	S. WINDISCH
WITNESSED BY	J. MITCHEN	J. MITCHEN

FOLD HERE THIS HEADING AND LOG CONFORMS TO API RP 33

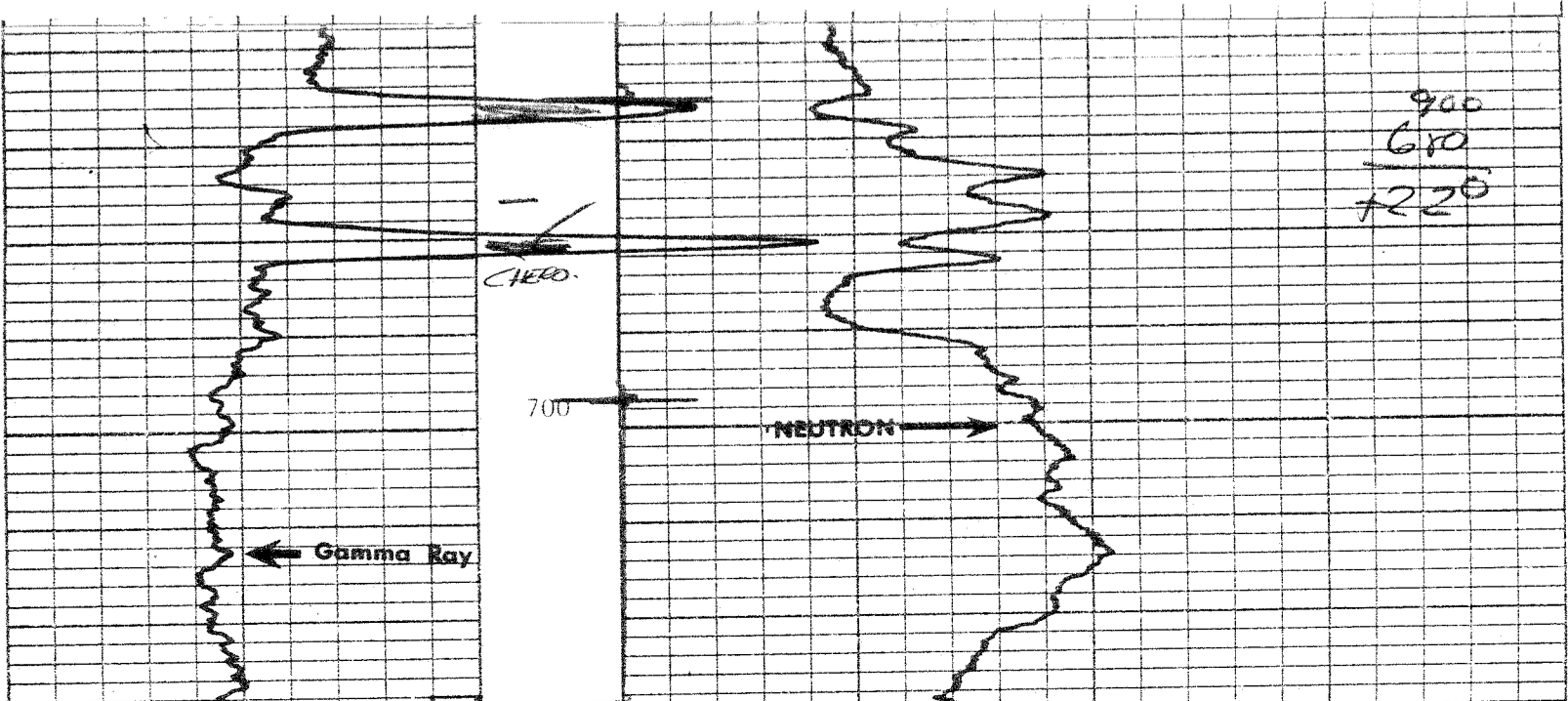
EQUIPMENT DATA		
GAMMA RAY		NEUTRON
RUN NO.	1 NW	1 NW
TOOL MODEL NO.	102	NEU/NEU
DIAMETER	1 11/16"	1 11/16"
DETECTOR MODEL NO.	E-1057	E-1031
TYPE	SCINT	HE-3
LENGTH	1" x 4"	1" x 6"
DISTANCE TO N. SOURCE	8 0	71-1
GENERAL		SERIAL NO. 71-1-355B
MOIST TRUCK NO.	NA	SPACING 13"
INSTRUMENT TRUCK NO.	102	TYPE Am241Be
TOOL SERIAL NO.	MS-0001	STRENGTH 3 CI

LOGGING DATA										
RUN NO.	GENERAL DEPTHS		SPEED FT./MIN.	T.C. SEC.	GAMMA RAY			NEUTRON		
	FROM	TO			ZERO DIV. L OR R	API G.R. UNITS PER LOG DIV.	T.C. SEC.	SENS. SETTINGS	ZERO DIV. L OR R	API N. UNITS PER LOG DIV.
1	50.0	788.0	20	4.0	185/100	OL	10	4 0	135/100	OL 20

REFERENCE LITERATURE: 2 7/8" CEMENTED

REMARKS

GAMMA RAY CASING COLLARS NEUTRON

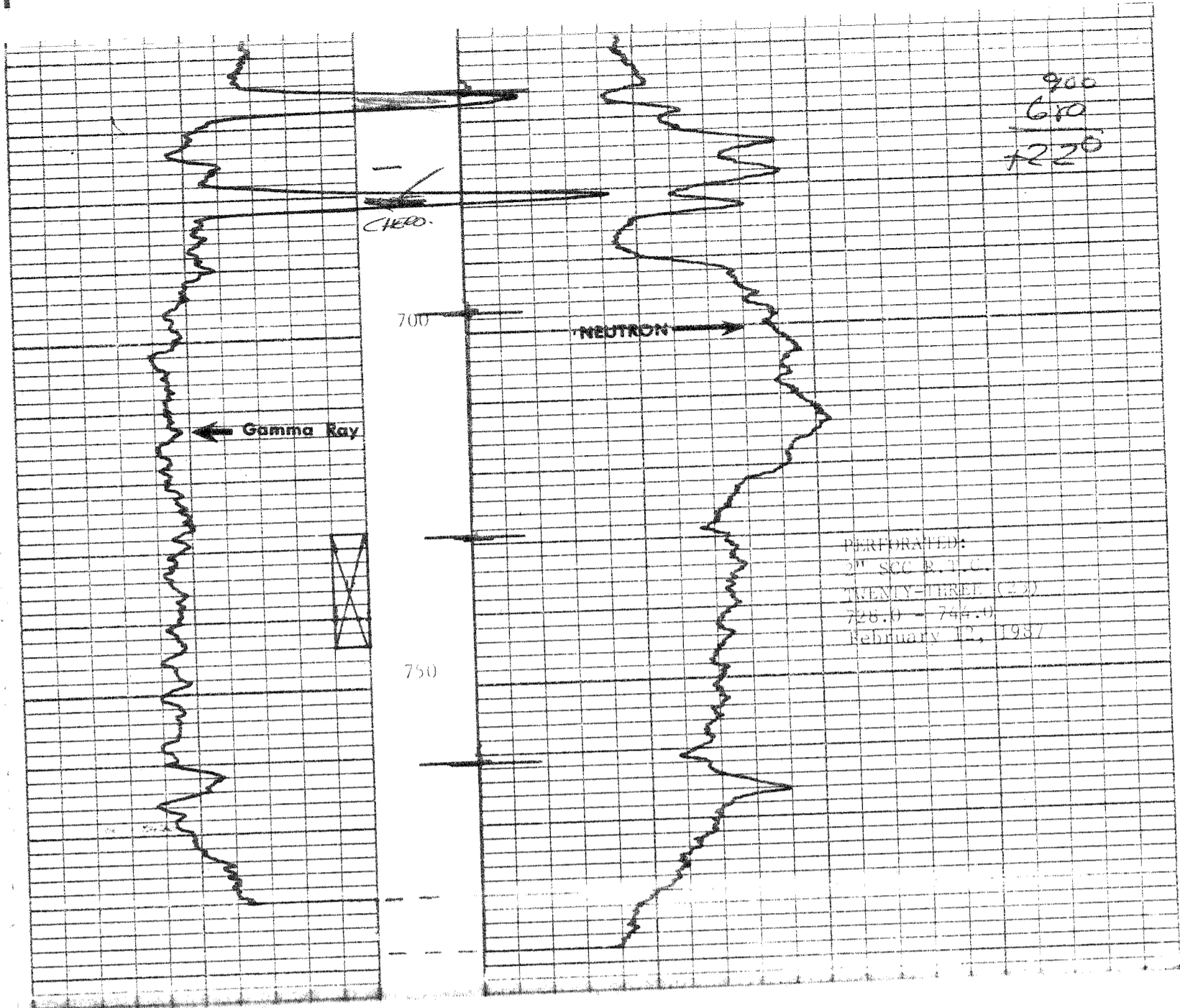


NSCO-16240

# GAMMA RAY

# DEPTH CASING COLLARS

# NEUTRON



COMPANY KANSAS OIL PUMPKERS, INC.  
 WELL NO. 3  
 LEASE SHEPHARD  
 COUNTY DOUGLAS, KANSAS  
 DATE JANUARY 2, 1987

GAMMA RAY  
 GAMMA RAY  
 NEUTRON  
 NEUTRON  
 CASING SET @

T.D. 789.0  
 R.D. 780.0  
 T.D. 789.0  
 R.D. 783.0  
 T.D.