

STATE CORPORATION COMMISSION OF KANSAS
OIL & GAS CONSERVATION DIVISION

WELL COMPLETION OR RECOMPLETION FORM
ACO-1 WELL HISTORY

DESCRIPTION OF WELL AND LEASE

Operator: License # 4153
Name John Chandler
Address Rt 1
Eudora, Ks. 66025
City/State/Zip

Purchaser

Operator Contact Person John Chandler
Phone 913 883 4257

Contractor: License # 6084
Name McMullin Well Service

Wellsite Geologist None
Phone

Designate Type of Completion

- New Well
- Re-Entry
- Workover
- Oil
- Gas
- Dry *P+H*
- SWD
- Inj
- Other (Core, Water Supply, etc.)
- Temp Abd
- Delayed Comp

If OWWO: old well info as follows:
Operator
Well Name
Comp. Date Old Total Depth.....

WELL HISTORY

Drilling Method:
 Mud Rotary Air Rotary Cable

2-22-85 3-1-85 3-7-85
Spud Date Date Reached TD Completion Date
810
Total Depth PBD

Amount of Surface Pipe Set and Cemented at 120 feet
Multiple Stage Cementing Collar Used? Yes No
If yes, show depth set.....feet
if alternate 2 completion, cement circulated
from 120 feet depth to surface 22 SX cm

API NO. 15-045-20,777
County Douglas
SE NE SE Sec 29 Twp 14 Rge 21 East West

1970 Ft North from Southeast Corner of Section
335 Ft West from Southeast Corner of Section
(Note: Locate well in section plat below)

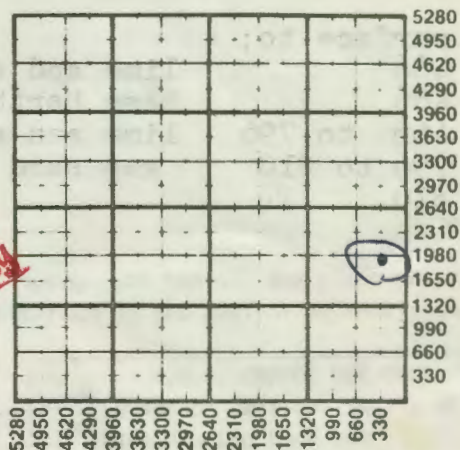
Lease Name Chandler Well # 2

Field Name

Producing Formation Squirrel

Elevation: Ground.....KB.....

Section Plat



WATER SUPPLY INFORMATION

Disposition of Produced Water: Disposal
Docket # Repressuring

Questions on this portion of the ACO-1 call:

Water Resources Board (913) 296-3717

Source of Water:
Division of Water Resources Permit #.....

Groundwater.....Ft North from Southeast Corner
(Well)Ft West from Southeast Corner of
Sec Twp Rge East West

Surface Water.....Ft North from Southeast Corner
(Stream, pond etc).....Ft West from Southeast Corner
Sec Twp Rge East West

Other (explain).....
(purchased from city, R.W.D. #)

INSTRUCTIONS: This form shall be completed in duplicate and filed with the Kansas Corporation Commission, 200 Colorado Derby Building, Wichita, Kansas 67202, within 90 days after completion or recompletion of any well. Rule 82-3-130 and 82-3-107 apply. Information on side two of this form will be held confidential for a period of 12 months if requested in writing and submitted with the form. See rule 82-3-107 for confidentiality in excess of 12 months. One copy of all wireline logs and drillers time log shall be attached with this form. Submit CP-4 form with all plugged wells. Submit CP-111 form with all temporarily abandoned wells.

MAY 7 1985
State Geological Survey
WICHITA BRANCH

Operator Name **John Chandler** Lease Name **Chandler** Well # **2**

Sec. **29** Twp. **14** Rge. **21** East West County **Douglas**

WELL LOG

INSTRUCTIONS: Show important tops and base of formations penetrated. Detail all cores. Report all drill stem tests giving interval tested, time tool open and closed, flowing and shut-in pressures, whether shut-in pressure reached static level, hydrostatic pressures, bottom hole temperature, fluid recovery, and flow rates if gas to surface during test. Attach extra sheet if more space is needed. Attach copy of log.

Drill Stem Tests Taken Yes No
 Samples Sent to Geological Survey Yes No
 Cores Taken Yes No

Formation Description

Log Sample

Name Top Bottom

surface to;
 466 lime and shale
 466 base Hertha lime
 466 to 796 lime and shale
 796 to 810 gas sand
 810 TD

Estimated Production Per 24 Hours	Oil Bbls	Gas MCF	Water Bbls	Gas-Oil Ratio CFPB	Gravity
		150			

METHOD OF COMPLETION

Production Interval

Disposition of gas: Vented Open Hole Perforation
 Sold Other (Specify)
 Used on Lease

CASING RECORD New Used

Report all strings set-conductor, surface, intermediate, production, etc.

Purpose of String	Size Hole Drilled	Size Casing Set (in O.D.)	Weight Lbs/Ft.	Setting Depth	Type of Cement	#Sacks Used	Type and Percent Additives
surface	8 7/8	6 1/2		120	port	22	
production	5 1/8	2 3/8		796	port	90	

PERFORATION RECORD

Acid, Fracture, Shot, Cement Squeeze Record

Shots Per Foot	Specify Footage of Each Interval Perforated	(Amount and Kind of Material Used)	Depth

TUBING RECORD Size Set At Packer at Liner Run Yes No

Date of First Production **3-7-85** Producing Method Flowing Pumping Gas Lift Other (explain).....