

28-14-226
22

STATE CORPORATION COMMISSION OF KANSAS
OIL & GAS CONSERVATION DIVISION
WELL COMPLETION OR RECOMPLETION FORM
ACO-1 WELL HISTORY
DESCRIPTION OF WELL AND LEASE

API NO. 15-091-21-964
County Johnson
S. E. Sec. 23. Twp. 14. Rge. 22. East West

Operator: License # 9511
Name Alternative Energy Systems, Inc.
Address 508 W. Washington
P. O. box 306
City/State/Zip Cuba, Missouri 65453

2065 Ft North from Southeast Corner of Section
1305 Ft West from Southeast Corner of Section
(Note: Locate well in section plat below)

Lease Name Meyers Well # 27

Field Name Gardner

Operator Contact Person Johnny L. Giles
Phone 314-365-2838

Producing Formation Bartlesville

Elevation: Ground KB

Drill Contractor: License # 5335
Name Hawkeye Drilling

Site Geologist
Phone

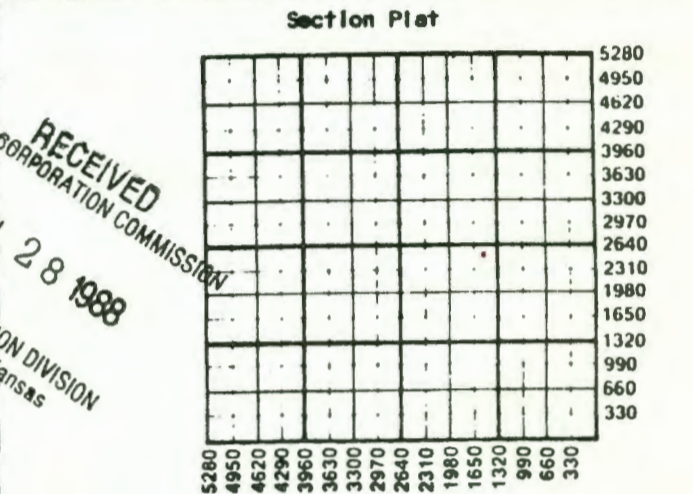
Designate Type of Completion
 New Well Re-Entry Workover
Oil SWD Temp Abd
Gas Inj Delayed Comp.
Dry Other (Core, Water Supply etc.)

OWNO: old well info as follows:
Operator
Well Name
Comp. Date Old Total Depth

WELL HISTORY

Drilling Method:
 Mud Rotary Air Rotary Cable
6-17-88 6-21-88 7-19-88
Start Date Date Reached TD Completion Date
930 946
Total Depth PBTD

Amount of Surface Pipe Set and Cemented at 40 feet
Multiple Stage Cementing Collar Used? Yes No
If yes, show depth set feet
Alternate 2 completion, cement circulated
946 feet depth to surface 105 SX cmt
Cement Company Name Consolidated
Volume #



WATER SUPPLY INFORMATION

Disposition of Produced Water: Disposal
Docket # Repressuring

Questions on this portion of the ACO-1 call:

Water Resources Board (913) 296-3717

Source of Water:
Division of Water Resources Permit #

Groundwater Ft North from Southeast Corner (Well) Ft West from Southeast Corner of Sec Twp Rge East West

Surface Water Ft North from Southeast Corner (Stream, pond etc) Ft West from Southeast Corner Sec Twp Rge East West

Other (explain) (purchased from city, R.W.D. #)

INSTRUCTIONS: This form shall be completed in duplicate and filed with the Kansas Corporation Commission, 600 Colorado Derby Building, Wichita, Kansas 67202, within 90 days after completion or recompletion of any well. Rule 82-3-130 and 82-3-107 apply. Information on side two of this form will be held confidential for a period of 12 months if requested in writing and submitted with the form. See rule 82-3-107 for confidentiality in excess of 12 months. One copy of all wireline logs and drillers time log shall be attached with this form. Submit CP-4 form with all plugged wells. Submit CP-111 form with all temporarily abandoned wells.

I, the undersigned, certify that the requirements of the statutes, rules and regulations promulgated to regulate the oil and gas industry have been fully complied with and the statements herein are complete and correct to the best of my knowledge.

Signature Johnny L. Giles
Title President Date 7/25/88

Witnessed and sworn to before me this 25th day of July 1988
Notary Public Norman M. Jackson
Commission Expires 4-33-90

K.C.C. OFFICE USE ONLY
F Letter of Confidentiality Attached
C Wireline Log Received
C Drillers Time Log Received
Distribution
KCC SMD/Rep NGPA
KGS Plug Other (Specify)

Sec 07, Imp 14, Rge 22C

JUL 29 1988

SIDE T:O

Operator Name Alternative Energy Systems, Inc. Lease Name Mevers Well # 27

Sec. 28 Twp. 14 Rge. 22 East West County Johnson

WELL LOG

INSTRUCTIONS: Show important tops and base of formations penetrated. Detail all cores. Report all drill stem tests giving interval tested, time tool open and closed, flowing and shut-in pressures, whether shut-pressure reached static level, hydrostatic pressures, bottom hole temperature, fluid recovery, and flow rate if gas to surface during test. Attach extra sheet if more space is needed. Attach copy of log.

Drill Stem Tests Taken Yes No
 Samples Sent to Geological Survey Yes No
 Cores Taken Yes No

Formation Description
 Log Sample

Name	Top	Bottom
Hertha	377	394
Bartlesville	872	890

CASING RECORD New Used
 Report all strings set-conductor, surface, intermediate, production, etc.

Purpose of String	Size Hole Drilled	Size Casing Set (in O.D.)	Weight Lbs/Ft.	Setting Depth	Type of Cement	#Sacks Used	Type and Percent Additives
Surface Production	8 7/8 6	6 7/8 2 7/8	6	40	Portland Oil Well	10 105	None Gel

PERFORATION RECORD
 Shots Per Foot | Specify Footage of Each Interval Perforated | Acid, Fracture, Shot, Cement Squeeze Record (Amount and Kind of Material Used) | Depth

3	873 to 879	150 bbl. of oil 5sacks 12-20 75 sacks 8-12	
---	------------	--	--

TUBING RECORD Size Set At Packer at Liner Run Yes No

Date of First Production Producing Method
 Flowing Pumping Gas Lift Other (explain).....

Estimated Production Per 24 Hours	Oil Bbls	Gas MCF	Water Bbls	Gas-Oil Ratio CFPB	Gravity
	3	0	0		21

METHOD OF COMPLETION

Production Interval

Disposition of gas: Vented Open Hole Perforation
 Sold Other (Specify) 873 to 879
 Used on Lease Dually Completed
 Commingled