

WELL COMPLETION REPORT AND DRILLER'S LOG

S. 34 T. 14 R. 22 E
 Loc. 660NSL & 680 EWL NW 1/4
3700 FSL & 3900 FEL
 County Johnson

API No. 15 — 091 — 20,149
 County Number

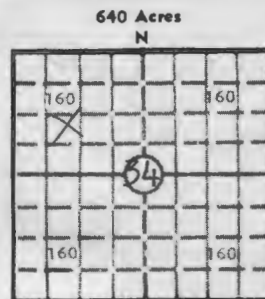
Operator The Fleetwood Corporation
 Address Box 33A Centerville, Kansas 66014

Well No. 2-1 Lease Name Voigts NW NWSE NW
 Footage Location 1300 3700 FSL & 3900 FEL 1300 KCC record
 feet from (N) (S) line feet from (E) (W) line

Principal Contractor T.D. Corporation Geologist

Spud Date May 16, 79 Date Completed June 29, 1979 Total Depth 890 P.B.T.D. Same

Directional Deviation Oil and/or Gas Purchaser Square Deal Oil Co.



KCC record

Locate well correctly

Elev.: Gr. _____

DF _____ KB _____

CASING RECORD

Report of all strings set — surface, intermediate, production, etc.

Purpose of string	Size hole drilled	Size casing set (in O.D.)	Weight lbs./ft.	Setting depth	Type cement	Sacks	Type and percent additives
Surface	8 1/2	7	22	60	Portland	3	Neat
Production	6 1/2	4 1/2	9.5	869.5	Portland	100	Neat

LINER RECORD

PERFORATION RECORD

Top, ft.	Bottom, ft.	Sacks cement	Shots per ft.	Size & type	Depth interval
			2	3 1/2 Strip Jet	840-844

TUBING RECORD

Size	Setting depth	Packer set at

ACID, FRACTURE, SHOT, CEMENT SQUEEZE RECORD

Amount and kind of material used	Depth interval treated
150 lbs. J267, 10 Gal L53, 70CWT 20-40 Sand, 70 CWT Prop Sand	840-844

INITIAL PRODUCTION

Date of first production <u>June 29, 1979</u>	Producing method (flowing, pumping, gas lift, etc.) <u>Flowing</u>
RATE OF PRODUCTION PER 24 HOURS	Oil _____ Gas _____ Water <u>16</u> Gas-oil ratio _____ CFPB _____
Disposition of gas (vented, used on lease or sold)	Producing interval (s)

RECEIVED
 STATE CORPORATION COMMISSION
 AUG 15 1979

INSTRUCTIONS: As provided in KCC Rule 82-2-125, within 90 days after completion of a well, one completed copy of this Drillers Log shall be transmitted to the State Geological Survey of Kansas, 4150 Monroe Street, Wichita, Kansas 67209. Copies of this form are available from the Conservation Division, State Corporation Commission, 245 No. Water, Wichita, Kansas 67202. Phone AC 316-522-2206. If confidential custody is desired, please note Rule 82-2-125. Drillers Logs will be on open file in the Oil and Gas Division, State Geological Survey of Kansas, Lawrence, Kansas 66044.

34-14-22E

Operator The Fleetwood Corporation		DESIGNATE TYPE OF COMP.: OIL, GAS, DRY HOLE, SWDW, ETC.:
Well No. 2-1	Lease Name Voigts	Oil
S <u>34</u> T <u>14</u> R <u>22</u> E		

WELL LOG

Show all important zones of porosity and contents thereof; cored intervals, and all drill-stem tests, including depth interval tested, cushion used, time tool open, flowing and shut-in pressures, and recoveries.

SHOW GEOLOGICAL MARKERS, LOGS RUN, OR OTHER DESCRIPTIVE INFORMATION.

FORMATION DESCRIPTION, CONTENTS, ETC.	TOP	BOTTOM	NAME	DEPTH
Soil		2		
Clay		3		
Lime		5		
Shale		15		
Lime		28		
Shale		39		
Lime		45		
Shale		61		
Lime		66		
Shale		71		
Red Bed		74		
Shale		90		
Lime		101		
Shale		122		
Lime		154		
Shale		160		
Lime Shale		216		
Shale		222		
Lime		238		
Shale		244		
Lime		279		
Shale		281		
Lime		287		
Shale		315		
Lime		346		
Shale		351		
Lime		354		
Shale		360		
Lime		366	Hertha	
Shale		506	Cherokee	
Lime		510		
Shale		548		
Lime		556		
Shale		578		
Lime		582		
Shale		614		
Lime		622		
Shale		638		
Lime		648		

USE ADDITIONAL SHEETS, IF NECESSARY, TO COMPLETE WELL RECORD.

Date Received	Signature
	Title
	Date

Operator

DESIGNATE TYPE OF COMP.: OIL, GAS, DRY HOLE, SWDW, ETC.:

Well No.

Lease Name

S ___ T ___ R ___ E ___ W

WELL LOG

Show all important zones of porosity and contents thereof; cored intervals, and all drill-stem tests, including depth interval tested, cushion used, time tool open, flowing and shut-in pressures, and recoveries.

SHOW GEOLOGICAL MARKERS, LOGS RUN, OR OTHER DESCRIPTIVE INFORMATION.

FORMATION DESCRIPTION, CONTENTS, ETC.	TOP	BOTTOM	NAME	DEPTH
Shale		712		
Sandy Shale		716		
Shale		738		
Lime		741		
Shale		796		
Limey Shale		806		
Lime		818		
Sandy Shale		834		
Oil Sand		850		
Shale		890		

USE ADDITIONAL SHEETS, IF NECESSARY, TO COMPLETE WELL RECORD.

Date Received

Signature

Title

Date

KANSAS

WELL COMPLETION REPORT AND
DRILLER'S LOG

API No. 15 — _____
County _____ Number _____

S. _____ T. _____ R. _____ E
W
Loc. _____
County _____

Operator _____

Address _____

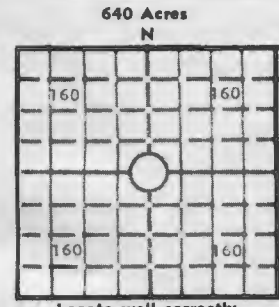
Well No. _____ Lease Name _____

Footage Location _____
feet from (N) (S) line _____ feet from (E) (W) line _____

Principal Contractor _____ Geologist _____

Spud Date _____ Date Completed _____ Total Depth _____ P.B.T.D. _____

Directional Deviation _____ Oil and/or Gas Purchaser _____



Elev.: Gr. _____
DF _____ KB _____

CASING RECORD

Report of all strings set — surface, intermediate, production, etc.

Purpose of string	Size hole drilled	Size casing set (in O.D.)	Weight lbs/ft.	Setting depth	Type cement	Sacks	Type and percent additives

LINER RECORD

PERFORATION RECORD

Top, ft.	Bottom, ft.	Sacks cement	Shots per ft.	Size & type	Depth interval

TUBING RECORD

Size	Setting depth	Packer set at

ACID, FRACTURE, SHOT, CEMENT SQUEEZE RECORD

Amount and kind of material used	Depth interval treated

INITIAL PRODUCTION

Date of first production _____ Producing method (flowing, pumping, gas lift, etc.) _____

RATE OF PRODUCTION PER 24 HOURS	Oil	Gas	Water	Gas-oil ratio

Disposition of gas (vented, used on lease or sold) _____ Producing interval (s) _____

INSTRUCTIONS: As provided in KCC Rule 82-2-125, within 90 days after completion of a well, one completed copy of this Drillers Log shall be transmitted to the State Geological Survey of Kansas, 4150 Monroe Street, Wichita, Kansas 67209. Copies of this form are available from the Conservation Division, State Corporation Commission, 245 No. Water, Wichita, Kansas 67202. Phone AC 316-522-2206. If confidential custody is desired, please note Rule 82-2-125. Drillers Logs will be on open file in the Oil and Gas Division, State Geological Survey of Kansas, Lawrence, Kansas 66044.

RECEIVED
STATE CORPORATION COMMISSION
AUG 16 1973