

County **Dickinson** State **Kansas**
 Sec. **6** (Blk. Twp.) **15** (Sur. Rge.) **1E** Map No.
 Operator **Don Ingling etal.**
 Well No. **1** Farm **Emig**
 Elev. Location **SE SE NE**

330 Ft. From **S** Line **NE**
330 Ft. From **E** Line Quarter
 Ist. Report **SEP 8 1954**
 Completion
 Remarks
Co. tools
 Spudding Date **9-3-54**

Drlg. Data
8" @ 108 drlg. 535

FABEN GILSTRAP

County **Dickinson** State **Kansas**
 Sec. **6** (Blk. Twp.) **15** (Sur. Rge.) **1E** Map No.
 Operator **Don Ingling etal.**
 Well No. **1** Farm **Emig**
 Elev. **1313** Location **SE SE NE**

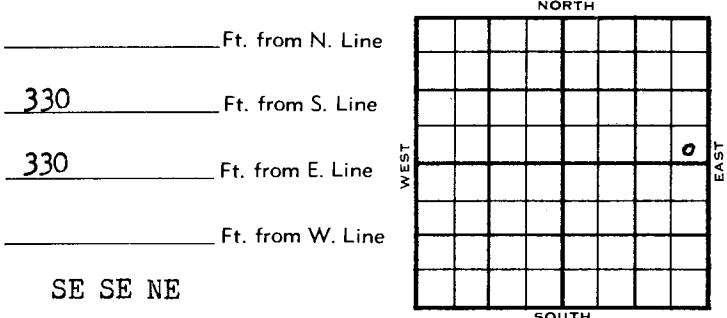
330 Ft. From **S** Line **NE**
330 Ft. From **E** Line Quarter
 Ist. Report **Sep 8 1954**
 Completion **SEP 22 1954**
 Remarks
Co. Tools
 Spudding Date **9-3-54**

Drlg. Data **D & A TD 2615**
8" @ 108 Lans. 1949 Burgess 2591
DST 2591-96 open 1 hr. Rec. 780' sw
70' socm 800# Miss. 2606 TD 2615
D & A

FABEN GILSTRAP

Dickinson KANSAS

SEC.	TWP.	R.
6	15	1 E
WELL NO. # 1 Emig FARM		
COMPANY Don Ingling et al		
CONTRACTOR Co. tools		



	ELEVATION	REPORT
1954	1313'	
9/8		Spud 9-3-54 8" @ 108 Drlg. 535'
9/22		Spud 9-3-54 D & A TD 2615 8" @ 108 Lans 1949 Burgess 2591 DST 2591-96 open 1 hr rec 780' SW 70' POCM 800' Miss 2606 TD 2615 D & A
ABANDONED		

DX-78

DX 78-1

Dickinson
15-041-00026

KANSAS

Section 6 Township 15 Range 1E

Well No. #1 Emig

Company Don Ingling et al

