

15-197-2082

State Geological Survey
WICHITA BRANCH
KANSAS DRILLERS LOG

S. 11 T. 15 R. 10 E

API No. 15 _____
County _____ Number _____

Loc. 7 1/2 NW 55
County Wabasha

Operator
Mack Oil Company

Address
Duncan, Oklahoma

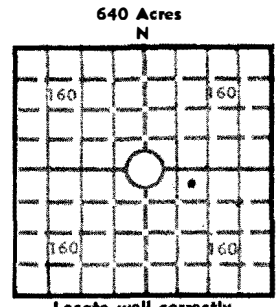
Well No. # 4 Lease Name Woodbury

Footage Location
990 feet from ~~W~~ (S) line 825 feet from (E) ~~W~~ line
2350 FSL and 1575 FEL-KCC Record

Principal Contractor Lau-Go Inc. Geologist Earl Moore

Spud Date 5/17/79 Total Depth 3435 P.B.T.D. _____

Date Completed 5/28/79 Oil Purchaser _____



Elev.: Gr. _____
DF _____ KB _____

CASING RECORD

Report of oil strings set— surface, intermedia b, production, etc.

Purpose of string	Size hole drilled	Size casing set (in O.D.)	Weight lbs/ft.	Setting depth	Type cement	Sacks	Type and percent additives
Surface	12 1/4"	8 5/8"		212 KB	Class A Cement	150	3% Ocul.
Production	7 7/8"	5 1/2"		3403'	Class A Cement	135	

LINER RECORD

PERFORATION RECORD

Top, ft.	Bottom, ft.	Sacks cement	Shots per ft.	Size & type	Depth interval

TUBING RECORD

Size	Setting depth	Packer set at

ACID, FRACTURE, SHOT, CEMENT SQUEEZE RECORD

Amount and kind of material used	Depth interval treated

INITIAL PRODUCTION

Date of first production _____		Producing method (flowing, pumping, gas lift, etc.) _____			
RATE OF PRODUCTION PER 24 HOURS	Oil _____ bbls.	Gas _____ MCF	Water _____ bbls.	Gas-oil ratio _____ CFPB	
Disposition of gas (vented, used on lease or sold) _____			Producing interval (s) _____		

INSTRUCTIONS: As provided in KCC Rule 82-2-125, within 90 days after completion of a well, one completed copy of this Drillers Log shall be transmitted to the State Geological Survey of Kansas, 4150 Monroe Street, Wichita, Kansas 67209. Copies of this form are available from the Conservation Division, State Corporation Commission, 3830 So. Meridian (P.O. Box 17027), Wichita, Kansas 66217. Phone AC 316-522-2206. If confidential custody is desired, please note Rule 82-2-125. Drillers Logs will be on open file in the Oil and Gas Division, State Geological Survey of Kansas, Lawrence, Kansas 66044.

11-15-10E

DESIGNATE TYPE OF COMP.: OIL GAS, DRY HOLE, SWDW, ETC.: OIL

Operator *Mack Oil Co.*

Well No. *#4* Lease Name *Woodbury*

S *11* T *155* R *10* E *Wabunee Co.*

WELL LOG

Show all important zones of porosity and contents thereof; cored intervals, and all drill-stem tests, including depth interval tested, cushion used, time tool open, flowing and shut-in pressures, and recoveries.

SHOW GEOLOGICAL MARKERS, LOGS RUN, OR OTHER DESCRIPTIVE INFORMATION.

FORMATION DESCRIPTION, CONTENTS, ETC.	TOP	BOTTOM	NAME	DEPTH
0 - 32 3/4 Soil, shale, flint		3166-3200	Viola	
32 3/4 - 218 Lime + shale		3200-3253	Viola	
218 - 350 shale + lime streaks		3253-3257	Simpson	
350 - 910 lime - shale streaks		3257-3260	Simpson	
910 - 1350 lime + shale		3260-3272	Simpson	
1350 - 1478 lime - shale streaks		3272-3320	Simpson	
1478 - 1601 Lansing		3320-3390	Simpson	
1601 - 1865 Lansing lime		3390-3400	Simpson	
1865 - 2205 Lime (Lans. KC.)		3400-3435	Drill Wash	
2205 - 2256 Lansing				
2256 - 2448 Lans. Lime (KC.)				
2448 - 13 Lime (Lans KC)				
2513 - 2650 Mississippian				
2650 - 2701 Mississippian				
2701 - 2740 Mississippian				
2740 - 2785 Mississippian Lime				
2785 - 2868 Lime - Miss.				
2868 - 2910 Kinderhook shale				
2910 - 3016 Kinderhook				
3016 - 3058 Henton				
3058 - 3155 Henton				
3155 - 3157 Henton				
3157 - 3166 Viola				

USE ADDITIONAL SHEETS, IF NECESSARY, TO COMPLETE WELL RECORD.

Date Received ~~2-1-10~~

Signature _____

Title _____

Date _____