



WESTERN TESTING CO., INC.

FORMATION TESTING

TICKET NO 4922

P. O. BOX 1599 WICHITA, KANSAS 67201 PHONE (316) 838-0601

Elevation 1422 Kb Formation Huntow Eff. Pay Ft.

District Augusta Date 4/21/80 Customer Order No. COMPANY NAME Pendleton Oil & Gas Service & Exploration, Inc. ADDRESS 1700 Security Life Bldg Denver Co. LEASE AND WELL NO Wheat Farm #1 COUNTY Wabunsee STATE Ka Sec 10 Twp 15S Rge 11E Mail Invoice To Same Co. Name Address No. Copies Requested 1 Mail Charts To Same Address No. Copies Requested 5

Formation Test No. 1 Interval Tested from 2971 ft. to 2986 ft. Total Depth 2986 ft. Packer Depth 2971 ft. Size 6 3/4 in. Packer Depth 2966 ft. Size 6 3/4 in. Packer Depth - ft. Size - in. Depth of Selective Zone Set -

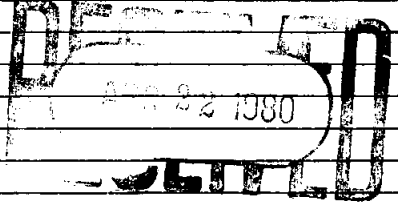
Top Recorder Depth (Inside) 2978 ft. Recorder Number 3354 Cap. 4200 Bottom Recorder Depth (Outside) 2982 ft. Recorder Number 2605 Cap. 4150 Below Straddle Recorder Depth - ft. Recorder Number - Cap. -

Drilling Contractor Edco #6 Mud Type Chem Viscosity 42 Weight 9.4 Water Loss 12.8 cc Chlorides 800 P.P.M. Jars: Make WTC Serial Number 403 Did Well Flow? NO Reversed Out Drill Collar Length 174 I. D. - in. Weight Pipe Length - I. D. - in. Drill Pipe Length 2770 I. D. - in. Test Tool Length 27 ft. Tool Size 5 1/2 in. Anchor Length 15 ft. Size 5 1/2 in. Surface Choke Size 3/4 in. Bottom Choke Size 3/4 in. Main Hole Size 7 7/8 in. Tool Joint Size 4 1/2 x 1 1/4 in.

Blow: Good blow - decreasing first flow, second flow weak blow. Died 15 min.

Recovered 2392 ft. of salt water Chlorides 12,000 Recovered - ft. of Recovered - ft. of Recovered - ft. of Recovered - ft. of Recovered - ft. of

Remarks: 10.6 miles from Augusta to location.



Time Set Packer(s) 5.25 A.M. P.M. Time Started Off Bottom 7:10 A.M. P.M. Maximum Temperature 104° Initial Hydrostatic Pressure (A) 1476 P.S.I. Initial Flow Period Minutes 15 (B) 738 P.S.I. to (C) 1002 P.S.I. Initial Closed In Period Minutes 45 (D) 1002 P.S.I. Final Flow Period Minutes 15 (E) 1002 P.S.I. to (F) 1002 P.S.I. Final Closed In Period Minutes 30 (G) 1002 P.S.I. Final Hydrostatic Pressure (H) 1476 P.S.I.

COMPANY TERMS

Western Testing Co., Inc. shall not be liable for damages of any kind to the property or personnel of the one for whom a test is made or for any loss suffered or sustained directly or indirectly through the use of its equipment, of its statements or opinion concerning the results of any test. Tools lost or damaged in the hole shall be paid at cost by the party for whom the test is made.

All charges subject to 12% interest after 60 days from date of invoice. Any expense incurred for collection will be added to the original amount.

Test Approved By Daniel Fredlund Signature of Customer or his authorized representative

Representative Kenny Kerber, Salt 11:30 Pm 4/20/80 4/21/80

FIELD INVOICE

Open Hole Test \$ 500.00 Misrun \$ Straddle Test \$ Jars \$ 275.00 Selective Zone \$ 35.00 Safety Joint \$ Standby \$ Evaluation \$ Extra Packer \$ Circ. Sub. \$ 25.00 Mileage \$ Fluid Samples \$ Extra Charts \$ TOTAL \$ 800.00

WESTERN TESTING CO., INC.

Pressure Data

4-21-80

Test Ticket No 4922

Order No 3354

Capacity 1200

Location 2978

Block No _____ Elevation 1432 KB

Well Temperature 104

	Pressure		Time Given	Time Computed
Initial Hydrostatic Mud	1468 P.S.I.	Open Tool	5:25 A M	
First Initial Flow Pressure	738 P.S.I.	First Flow Pressure	15 Mins	15 Mins
First Final Flow Pressure	987 P.S.I.	Initial Closed-in Pressure	45 Mins	45 Mins
Initial Closed-in Pressure	1012 P.S.I.	Second Flow Pressure	15 Mins	15 Mins
Second Initial Flow Pressure	1012 P.S.I.	Final Closed-in Pressure	30 Mins	30 Mins
Second Final Flow Pressure	1014 P.S.I.			
Final Closed-in Pressure	1014 P.S.I.			
Final Hydrostatic Mud	1445 P.S.I.			

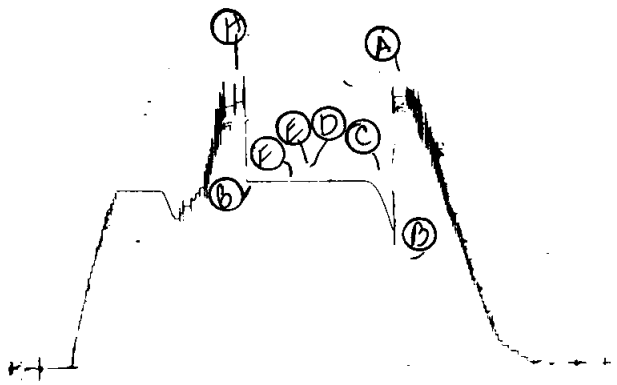
PRESSURE BREAKDOWN

<p>First Flow Pressure Breakdown: 3 Inc. of 5 mins. and a final inc. of 0 Min.</p>	<p>Initial Shut-In Breakdown: 15 Inc. of 3 mins. and a final inc. of 0 Min.</p>	<p>Second Flow Pressure Breakdown: 3 Inc. of 5 mins. and a final inc. of 0 Min.</p>	<p>Final Shut-In Breakdown: 10 Inc. of 3 mins. and a final inc. of 0 Min.</p>
--	---	---	---

Point	Press.	Point	Press.	Point	Press.
0	738	0	987	0	1012
5	833	3	1004	5	1012
10	930	6	1011	10	1013
15	987	9	1012	15	1014
20		12		20	
25		15		25	
30		18		30	
35		21		35	
40		24		40	
45		27		45	
50		30		50	1014
55		33		55	
60		36		60	
		39		65	
		42		70	
		45	1012	75	
		48		80	
		51		85	
		54		90	
		57			
		60			

3364
4922

RT# 4922
I



Company Pendleton Land & Exploration, Inc Lease & Well No. Wheat Farm #1
 Elevation 1422 Kelly Bushing Formation Hunton Effective Pay ----- Ft. Ticket No. 4922
 Date 4/21/80 Sec. 10 Twp. 15S Range 11E County Wabaunsee State Kansas
 Test Approved by Daniel Fredlund Western Representative Kenny Kirkendall

Formation Test No. I Interval Tested from 2971 ft. to 2986 ft. Total Depth 2986 ft.
 Packer Depth 2971 ft. Size 6 3/4 in. Packer Depth - ft. Size - in.
 Packer Depth 2966 ft. Size 6 3/4 in. Packer Depth - ft. Size - in.

Depth of Selective Zone Set -
 Top Recorder Depth (Inside) 2978 ft. Recorder Number 3354 Cap. 4200
 Bottom Recorder Depth (Outside) 2982 ft. Recorder Number 2605 Cap. 4150
 Below Straddle Recorder Depth = ft. Recorder Number - Cap. -

Drilling Contractor Edco Drilling Rig #6 Drill Collar Length 174 I. D. - in.
 Mud Type chemical Viscosity 42 Weight Pipe Length - I. D. - in.
 Weight 9.4 Water Loss 12.8 cc. Drill Pipe Length 2770 I. D. - in.
 Chlorides 800 P.P.M. Test Tool Length 27 ft. Tool Size 5 1/2 in.
 Jars: Make WTC Serial Number 403 Anchor Length 15 ft. Size 5 1/2 in.
 Did Well Flow? No Reversed Out - Surface Choke Size 3/4 in. Bottom Choke Size 3/4 in.
 Main Hole Size 7 7/8 in. Tool Joint Size 4 1/2 XH in.

Blow: Good blow, decreasing first flow, second flow weak blow.
Died in fifteen minutes.

Recovered 2392 ft. of salt water Chlorides 12,000 ppm
 Recovered ft. of
 Recovered ft. of
 Recovered ft. of
 Recovered ft. of

Remarks:

Time Set Packer(s) 5:25 ~~PM~~ ^{A.M.} Time Started Off Bottom 7:10 ~~PM~~ ^{A.M.} Maximum Temperature 104°
 Initial Hydrostatic Pressure (A) 1468 P.S.I.
 Initial Flow Period Minutes 15 (B) 738 P.S.I. to (C) 987 P.S.I.
 Initial Closed In Period Minutes 45 (D) 1012 P.S.I.
 Final Flow Period Minutes 15 (E) 1012 P.S.I. to (F) 1014 P.S.I.
 Final Closed In Period Minutes 30 (G) 1014 P.S.I.
 Final Hydrostatic Pressure (H) 1445 P.S.I.

WESTERN TESTING CO., INC.
Pressure Data

Date 4/21/80 Test Ticket No. 4922
 Recorder No. 3354 Capacity 4200 Location 2978 Ft.
 Clock No. - Elevation 1422 Kelly Bushing Well Temperature 104 °F

Point	Pressure		Time Given	Time Computed
A Initial Hydrostatic Mud	<u>1468</u>	P.S.I.	<u>5:25A</u>	<u>M</u>
B First Initial Flow Pressure	<u>738</u>	P.S.I.	<u>15</u>	<u>15</u> Mins.
C First Final Flow Pressure	<u>987</u>	P.S.I.	<u>45</u>	<u>45</u> Mins.
D Initial Closed-in Pressure	<u>1012</u>	P.S.I.	<u>15</u>	<u>15</u> Mins.
E Second Initial Flow Pressure	<u>1012</u>	P.S.I.	<u>30</u>	<u>30</u> Mins.
F Second Final Flow Pressure	<u>1014</u>	P.S.I.		
G Final Closed-in Pressure	<u>1014</u>	P.S.I.		
H Final Hydrostatic Mud	<u>1445</u>	P.S.I.		

PRESSURE BREAKDOWN

Point Mins.	First Flow Pressure		Initial Shut-In		Second Flow Pressure		Final Shut-In	
	Breakdown:	Inc.	Breakdown:	Inc.	Breakdown:	Inc.	Breakdown:	Inc.
	of <u>5</u> mins. and a		of <u>3</u> mins. and a		of <u>5</u> mins. and a		of <u>3</u> mins. and a	
	final inc. of <u>0</u> Min.		final inc. of <u>0</u> Min.		final inc. of <u>0</u> Min.		final inc. of <u>0</u> Min.	
Point Mins.	Press.	Point Minutes	Press.	Point Minutes	Press.	Point Minutes	Press.	
P 1 <u>0</u>	<u>738</u>	<u>0</u>	<u>987</u>	<u>0</u>	<u>1012</u>	<u>0</u>	<u>1014</u>	
P 2 <u>5</u>	<u>833</u>	<u>3</u>	<u>1004</u>	<u>5</u>	<u>1012</u>	<u>3</u>	<u>1014</u>	
P 3 <u>10</u>	<u>930</u>	<u>6</u>	<u>1011</u>	<u>10</u>	<u>1013</u>	<u>6</u>	<u>1014</u>	
P 4 <u>15</u>	<u>987</u>	<u>9</u>	<u>1012</u>	<u>15</u>	<u>1014</u>	<u>9</u>	<u>1014</u>	
P 5		<u>12</u>	<u>1012</u>			<u>12</u>	<u>1014</u>	
P 6		<u>15</u>	<u>1012</u>			<u>15</u>	<u>1014</u>	
P 7		<u>18</u>	<u>1012</u>			<u>18</u>	<u>1014</u>	
P 8		<u>21</u>	<u>1012</u>			<u>21</u>	<u>1014</u>	
P 9		<u>24</u>	<u>1012</u>			<u>24</u>	<u>1014</u>	
P10		<u>27</u>	<u>1012</u>			<u>27</u>	<u>1014</u>	
P11		<u>30</u>	<u>1012</u>			<u>30</u>	<u>1014</u>	
P12		<u>33</u>	<u>1012</u>					
P13		<u>36</u>	<u>1012</u>					
P14		<u>39</u>	<u>1012</u>					
P15		<u>42</u>	<u>1012</u>					
P16		<u>45</u>	<u>1012</u>					
P17								
P18								
P19								
P20								



WESTERN TESTING CO., INC.

FORMATION TESTING

TICKET No 4933

P. O. BOX 1599 PHONE (316) 838-0601 WICHITA, KANSAS 67201

Elevation 1422 KB Formation Vista Eff. Pay Ft.

District Augusta Date 22 April 80 Customer Order No.

COMPANY NAME Ponderosa Land Exploration

ADDRESS 1700 Security Life Bldg - Denver Colo.

LEASE AND WELL NO Wheat Farm #1 COUNTY Delaware STATE Kans Sec. 10 Twp 15S Rge 11E

Mail Invoice To Same Co. Name Address No. Copies Requested 1

Mail Charts To Same Address No. Copies Requested 5

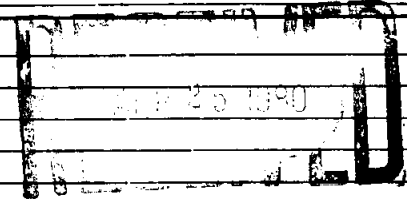
Formation Test No 2 Interval Tested from 3119 ft to 3127 ft Total Depth 3127 ft
Packer Depth 3114 ft Size 6 3/4 in. Packer Depth - ft Size - in.
Packer Depth 3119 ft Size 6 3/4 in. Packer Depth - ft Size - in.
Depth of Selective Zone Set -

Top Recorder Depth (Inside) 3106 ft Recorder Number 10980 Cap. 4200
Bottom Recorder Depth (Outside) 3109 ft Recorder Number 1501 Cap. 3200
Below Straddle Recorder Depth - ft Recorder Number - Cap. -

Drilling Contractor E.D. Drilling Co #6 Drill Collar Length 240' I. D. 2 1/4 in.
Mud Type Chemical Viscosity 41 Weight Pipe Length - I. D. - in.
Weight 9.2 Water Loss 10.6 cc Drill Pipe Length 2848' I. D. 3.8 in.
Chlorides 1200 P.P.M. Test Tool Length 39 ft Tool Size 4 1/2 in.
Jars: Make WTC Serial Number 411 Anchor Length 8 ft Size 4 1/2 in.
Did Well Flow? NO Reversed Out NO Surface Choke Size 3/4 in. Bottom Choke Size 3/4 in.
Main Hole Size 7 7/8 in. Tool Joint Size 3 1/2 IF in.

Blow: very weak blow on limited flow period weak increasing to fail blow on final flow period

Recovered 290 ft of sulphur water
Recovered ft of
Recovered ft of
Recovered ft of
Recovered ft of



Remarks: time on location 3:00 AM 22 April 80 jobs complete 2:00 PM 22 Apr 80 Augusta to location 106 miles

Table with 4 columns: Time Set Packer(s), AM/PM, Time Started Off Bottom, AM/PM, Maximum Temperature. Rows include Initial Hydrostatic Pressure, Initial Flow Period, Initial Closed In Period, Final Flow Period, Final Closed In Period, and Final Hydrostatic Pressure.

COMPANY TERMS

Western Testing Co., Inc. shall not be liable for damages of any kind to the property or personnel of the one for whom a test is made or for any loss suffered or sustained directly or indirectly through the use of its equipment, of its statements or opinion concerning the results of any test. Tools lost or damaged in the hole shall be paid at cost by the party for whom the test is made.

All charges subject to 12% interest after 60 days from date of invoice. Any expense incurred for collection will be added to the original amount.

Test Approved By Perry A. Hand Signature of Customer or his authorized representative

Western Representative WX Hagen Thanks You! OK/106

FIELD INVOICE

Table with 2 columns: Item, Price. Items include Open Hole Test (\$550.00), Misrun, Straddle Test, Jars (\$300.00), Selective Zone, Safety Joint (\$50.00), Standby, Evaluation, Extra Packer, Circ. Sub., Mileage x 259 (\$79.50), Fluid Sampler, Extra Charts, and TOTAL (\$975.50).

Handwritten notes at the bottom of the page, including 'This was trial' and 'Test one - Old Price'.

WESTERN TESTING CO., INC.

Pressure Data

Date 4-22-80 Test Ticket No. 4933
 Recorder No. 10980 Capacity 4200 Location 3127 Ft.
 Clock No. _____ Elevation 1422 KB Well Temperature 113 °F

Point	Pressure	Time Given	Time Computed
A Initial Hydrostatic Mud	<u>1525</u> P.S.I.	<u>8:20 A</u>	<u>M</u>
B First Initial Flow Pressure	<u>6</u> P.S.I.	<u>15</u> Mins.	<u>15</u> Mins.
C First Final Flow Pressure	<u>34</u> P.S.I.	<u>45</u> Mins.	<u>45</u> Mins.
D Initial Closed-in Pressure	<u>996</u> P.S.I.	<u>60</u> Mins.	<u>60</u> Mins.
E Second Initial Flow Pressure	<u>58</u> P.S.I.	<u>60</u> Mins.	<u>60</u> Mins.
F Second Final Flow Pressure	<u>122</u> P.S.I.		
G Final Closed-in Pressure	<u>941</u> P.S.I.		
H Final Hydrostatic Mud	<u>1506</u> P.S.I.		

PRESSURE BREAKDOWN

First Flow Pressure
 Breakdown: 3 Inc.
 of 5 mins. and a
 final inc. of 0 Min.

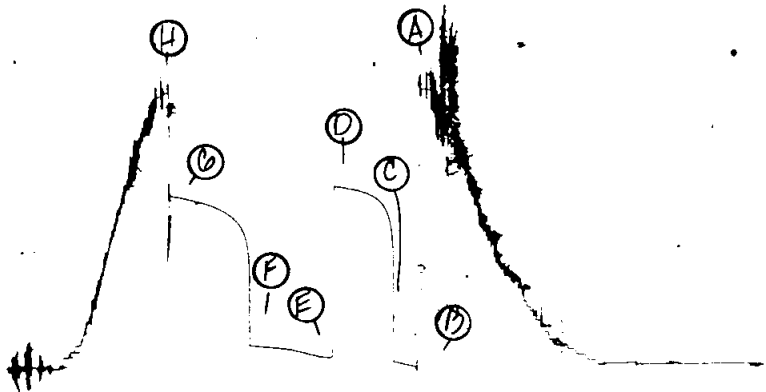
Initial Shut-In
 Breakdown: 15 Inc.
 of 3 mins. and a
 final inc. of 0 Min.

Second Flow Pressure
 Breakdown: 12 Inc.
 of 5 mins. and a
 final inc. of 0 Min.

Final Shut-In
 Breakdown: _____ Inc.
 of 3 mins. and a
 final inc. of 0 Min.

Point Mins.	Press.	Point Minutes	Press.	Point Minutes	Press.	Point Minutes	Press.
P 1	<u>6</u>	0	<u>34</u>	0	<u>58</u>	0	<u>122</u>
P 2	<u>13</u>	3	<u>772</u>	5	<u>60</u>	3	<u>679</u>
P 3	<u>24</u>	6	<u>853</u>	10	<u>66</u>	6	<u>779</u>
P 4	<u>34</u>	9	<u>891</u>	15	<u>75</u>	9	<u>789</u>
P 5		12	<u>917</u>	20	<u>85</u>	12	<u>812</u>
P 6		15	<u>936</u>	25	<u>94</u>	15	<u>834</u>
P 7		18	<u>947</u>	30	<u>103</u>	18	<u>849</u>
P 8		21	<u>957</u>	35	<u>109</u>	21	<u>862</u>
P 9		24	<u>966</u>	40	<u>113</u>	24	<u>872</u>
P10		27	<u>972</u>	45	<u>115</u>	27	<u>883</u>
P11		30	<u>979</u>	50	<u>118</u>	30	<u>891</u>
P12		33	<u>983</u>	55	<u>120</u>	33	<u>899</u>
P13		36	<u>987</u>	60	<u>122</u>	36	<u>906</u>
P14		39	<u>991</u>	65		39	<u>912</u>
P15		42	<u>994</u>	70		42	<u>919</u>
P16		45	<u>996</u>	75		45	<u>923</u>
P17		<u>48</u>		80		48	<u>928</u>
P18		<u>51</u>		85		51	<u>932</u>
P19		<u>54</u>		<u>90</u>		54	<u>936</u>
P20		<u>57</u>				57	<u>940</u>
		<u>60</u>				60	<u>941</u>

TRK # 4933
I



Company Pendleton Land & Exploration, Inc. Lease & Well No. Wheat Farm #1
 Elevation 1422 Kelly Bush. Formation Viola Effective Pay - Ft. Ticket No. 4933
 Date 4-22-80 Sec. 10 Twp. 15S Range 11E County Wabunsee State Kansas

Test Approved by Perry A Hand Western Representative William K. Hager

Formation Test No. 2 Interval Tested from 3119 ft. to 3127 ft. Total Depth 3127 ft.
 Packer Depth 3114 ft. Size 6 3/4 in. Packer Depth 3119 ft. Size 6 3/4 in.
 Packer Depth - ft. Size - in. Packer Depth - ft. Size - in.

Depth of Selective Zone Set -
 Top Recorder Depth (Inside) 3106 ft. Recorder Number 10980 Cap 4200
 Bottom Recorder Depth (Outside) 3109 ft. Recorder Number 1561 Cap 3200
 Below Straddle Recorder Depth - ft. Recorder Number - Cap -

Drilling Contractor Edco Drilling Co. (#6) Drill Collar Length 240 I. D. 2 1/4 in.
 Mud Type Chemical Viscosity 41 Weight Pipe Length - I. D. - in.
 Weight 9.2 Water Loss 10.6 cc. Drill Pipe Length 2848 I. D. 3.8 in.
 Chlorides 1,200 P.P.M. Test Tool Length 39 ft. Tool Size 4 1/2 in.
 Jars: Make WTC Serial Number 411 Anchor Length 8 ft. Size 4 1/2 in.
 Did Well Flow? No Reversed Out - Surface Choke Size 3/4 in. Bottom Choke Size 3/4 in.
 Main Hole Size 7 7/8 in. Tool Joint Size 3 1/2 IF in.

Blow: Very weak blow on initial flow period. Weak increasing to fair blow on final flow period.

Recovered 290 ft. of sulphur water
 Recovered ft. of
 Recovered ft. of
 Recovered ft. of
 Recovered ft. of

Remarks:

Time Set	<u>8:20</u>	P.M. <u>A.M.</u>	Time Started Off Bottom	<u>11:20</u>	P.M. <u>A.M.</u>	Maximum Temperature	<u>113</u>
Initial Hydrostatic Pressure			(A)	<u>1525</u>	P.S.I.		
Initial Flow Period	Minutes	<u>15</u>	(B)	<u>6</u>	P.S.I. to (C)	<u>34</u>	P.S.I.
Initial Closed In Period	Minutes	<u>45</u>	(D)	<u>996</u>	P.S.I.		
Final Flow Period	Minutes	<u>60</u>	(E)	<u>58</u>	P.S.I. to (F)	<u>122</u>	P.S.I.
Final Closed In Period	Minutes	<u>60</u>	(G)	<u>941</u>	P.S.I.		
Final Hydrostatic Pressure			(H)	<u>1506</u>	P.S.I.		

WESTERN TESTING CO., INC.
Pressure Data

Date 4-22-80 Test Ticket No. 4933
 Recorder No. 10980 Capacity 4200 Location 3127 Ft.
 Clock No. - Elevation 1422 Kelly Bushing Well Temperature 113 °F

Point	Pressure		Time Given	Time Computed
A Initial Hydrostatic Mud	<u>1525</u> P.S.I.	Open Tool	<u>8:20A.</u> M	
B First Initial Flow Pressure	<u>6</u> P.S.I.	First Flow Pressure	<u>15</u> Mins.	<u>15</u> Mins.
C First Final Flow Pressure	<u>34</u> P.S.I.	Initial Closed-in Pressure	<u>45</u> Mins.	<u>45</u> Mins.
D Initial Closed-in Pressure	<u>996</u> P.S.I.	Second Flow Pressure	<u>60</u> Mins.	<u>60</u> Mins.
E Second Initial Flow Pressure	<u>58</u> P.S.I.	Final Closed-in Pressure	<u>60</u> Mins.	<u>60</u> Mins.
F Second Final Flow Pressure	<u>122</u> P.S.I.			
G Final Closed-in Pressure	<u>941</u> P.S.I.			
H Final Hydrostatic Mud	<u>1506</u> P.S.I.			

PRESSURE BREAKDOWN

First Flow Pressure		Initial Shut-In		Second Flow Pressure		Final Shut-In	
Breakdown: <u>3</u> Inc.		Breakdown: <u>15</u> Inc.		Breakdown: <u>12</u> Inc.		Breakdown: <u>20</u> Inc.	
of <u>5</u> mins. and a		of <u>3</u> mins. and a		of <u>5</u> mins. and a		of <u>3</u> mins. and a	
final inc. of <u>0</u> Min.		final inc. of <u>0</u> Min.		final inc. of <u>0</u> Min.		final inc. of <u>0</u> Min.	
Point Mins.	Press.	Point Minutes	Press.	Point Minutes	Press.	Point Minutes	Press.
P 1 <u>0</u>	<u>6</u>	<u>0</u>	<u>34</u>	<u>0</u>	<u>58</u>	<u>0</u>	<u>122</u>
P 2 <u>5</u>	<u>13</u>	<u>3</u>	<u>772</u>	<u>5</u>	<u>60</u>	<u>3</u>	<u>679</u>
P 3 <u>10</u>	<u>24</u>	<u>6</u>	<u>853</u>	<u>10</u>	<u>66</u>	<u>6</u>	<u>749</u>
P 4 <u>15</u>	<u>34</u>	<u>9</u>	<u>891</u>	<u>15</u>	<u>75</u>	<u>9</u>	<u>789</u>
P 5 _____		<u>12</u>	<u>917</u>	<u>20</u>	<u>85</u>	<u>12</u>	<u>812</u>
P 6 _____		<u>15</u>	<u>936</u>	<u>25</u>	<u>94</u>	<u>15</u>	<u>834</u>
P 7 _____		<u>18</u>	<u>947</u>	<u>30</u>	<u>103</u>	<u>18</u>	<u>849</u>
P 8 _____		<u>21</u>	<u>957</u>	<u>35</u>	<u>109</u>	<u>21</u>	<u>862</u>
P 9 _____		<u>24</u>	<u>966</u>	<u>40</u>	<u>113</u>	<u>24</u>	<u>872</u>
P10 _____		<u>27</u>	<u>972</u>	<u>45</u>	<u>115</u>	<u>27</u>	<u>883</u>
P11 _____		<u>30</u>	<u>979</u>	<u>50</u>	<u>118</u>	<u>30</u>	<u>891</u>
P12 _____		<u>33</u>	<u>983</u>	<u>55</u>	<u>120</u>	<u>33</u>	<u>899</u>
P13 _____		<u>36</u>	<u>987</u>	<u>60</u>	<u>122</u>	<u>36</u>	<u>906</u>
P14 _____		<u>39</u>	<u>991</u>			<u>39</u>	<u>912</u>
P15 _____		<u>42</u>	<u>994</u>			<u>42</u>	<u>919</u>
P16 _____		<u>45</u>	<u>996</u>			<u>45</u>	<u>923</u>
P17 _____						<u>48</u>	<u>928</u>
P18 _____						<u>51</u>	<u>932</u>
P19 _____						<u>54</u>	<u>936</u>
P20 _____						<u>57</u>	<u>940</u>
						<u>60</u>	<u>941</u>



WESTERN TESTING CO., INC.

FORMATION TESTING

TICKET NO 4934

P. O. BOX 1599 WICHITA, KANSAS 67201 PHONE (316) 838-0601

Elevation 1422 KB Formation SIMPSON Eff. Pay Ft.

District AUGUSTA Date 4/23/80 Customer Order No.

COMPANY NAME PENDELTON LAND & EXPLORATION

ADDRESS 1700 Security Bldg Denver Co.

LEASE AND WELL NO. WHEAT FARM #1 COUNTY WABUNSEE STATE KANSAS Sec. 10 Twp. 15 Rge. 11E

Mail Invoice To SAME Co. Name Address No. Copies Requested 1

Mail Charts To SAME Address No. Copies Requested 5

Formation Test No. 3 Interval Tested from 3194 ft. to 3210 ft. Total Depth 3210 ft. Packer Depth 3194 ft. Size 6 3/4 in. Packer Depth 3189 ft. Size 6 3/4 in.

Top Recorder Depth (Inside) 3202 ft. Recorder Number 10980 Cap. 4200 Bottom Recorder Depth (Outside) 3206 ft. Recorder Number 1561 Cap. 3200 Below Straddle Recorder Depth ft. Recorder Number Cap.

Drilling Contractor EDCO DRILLING CO #6 Drill Collar Length 240 I. D. 2 1/4 in. Mud Type CHEMICAL Viscosity 46 Weight Pipe Length I. D. in. Weight 9.3 Water Loss 10 cc. Drill Pipe Length 2923 I. D. 3.8 in. Chlorides 900 P.P.M. Test Tool Length 47 ft. Tool Size 4 1/2 in. Jars: Make WTC Serial Number 411 Anchor Length 16 ft. Size 4 1/2 in. Did Well Flow? No Reversed Out Yes Surface Choke Size 3/4 in. Bottom Choke Size 3/4 in. Main Hole Size 7 7/8 in. Tool Joint Size 3 1/2 IF in.

Blow: STRONG DIMINISHING SLIGHTLY AT END OF TEST

Recovered 2110 ft. of Salt water 8000 PPM Chlorides 0.9 Resisting @ 78°F

REMARKS: AUGUSTA LOCATION - 106 MILES

Table with 4 columns: Time Set Packer(s), Time Started Off Bottom, Maximum Temperature, and Pressure (P.S.I.) for various tests (A-H).

COMPANY TERMS

Western Testing Co., Inc. shall not be liable for damages of any kind to the property or personnel of the one for whom a test is made or for any loss suffered or sustained directly or indirectly through the use of its equipment, of its statements or opinion concerning the results of any test.

All charges subject to 12% interest after 60 days from date of invoice. Any expense incurred for collection will be added to the original amount.

Test Approved By Daniel Fredlund Signature of Customer or his authorized representative

Western Representative John Lee - Norman Allen OK

ON LOCATION @ 7:00 AM 4/23/80 FINISH JOB @ 3:30 PM 4/23/80

FIELD INVOICE

Table listing items and costs: Open Hole Test \$350.00, Jars \$300.00, Safety Joint \$50.00, Mileage 79.50, TOTAL \$1000.00

WESTERN TESTING CO., INC.

Pressure Data

Date 4-23-80 Test Ticket No. 4934
 Recorder No. 10980 Capacity 4200 Location 3202 Ft.
 Clock No. _____ Elevation 1422 KB Well Temperature 117 °F

Point	Pressure	Open Tool	Time Given	Time Computed
A Initial Hydrostatic Mud	<u>1583</u> P.S.I.		<u>9:30</u> A	M
B First Initial Flow Pressure	<u>139</u> P.S.I.	First Flow Pressure	<u>15</u> Mins.	<u>15</u> Mins.
C First Final Flow Pressure	<u>449</u> P.S.I.	Initial Closed-in Pressure	<u>45</u> Mins.	<u>45</u> Mins.
D Initial Closed-in Pressure	<u>1086</u> P.S.I.	Second Flow Pressure	<u>30</u> Mins.	<u>30</u> Mins.
E Second Initial Flow Pressure	<u>494</u> P.S.I.	Final Closed-in Pressure	<u>60</u> Mins.	<u>60</u> Mins.
F Second Final Flow Pressure	<u>876</u> P.S.I.			
G Final Closed-in Pressure	<u>1083</u> P.S.I.			
H Final Hydrostatic Mud	<u>1557</u> P.S.I.			

PRESSURE BREAKDOWN

First Flow Pressure
 Breakdown: 3 Inc.
 of 5 mins. and a
 final inc. of 0 Min.

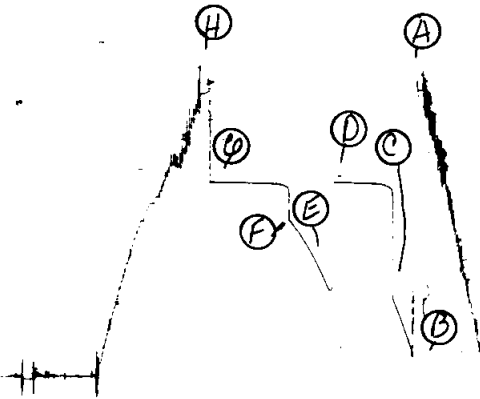
Initial Shut-In
 Breakdown: 15 Inc.
 of 3 mins. and a
 final inc. of 0 Min.

Second Flow Pressure
 Breakdown: 6 Inc.
 of 5 mins. and a
 final inc. of 0 Min.

Final Shut-In
 Breakdown: 20 Inc.
 of 3 mins. and a
 final inc. of 0 Min.

Point Mins.	Press.	Point Minutes	Press.	Point Minutes	Press.	Point Minutes	Press.
P 1 0	<u>139</u>	0	<u>449</u>	0	<u>494</u>	0	<u>876</u>
P 2 5	<u>252</u>	3	<u>1047</u>	5	<u>553</u>	3	<u>1064</u>
P 3 10	<u>365</u>	6	<u>1070</u>	10	<u>632</u>	6	<u>1072</u>
P 4 15	<u>449</u>	9	<u>1076</u>	15	<u>700</u>	9	<u>1074</u>
P 5 20		12	<u>1081</u>	20	<u>760</u>	12	<u>1078</u>
P 6 25		15	<u>1083</u>	25	<u>812</u>	15	<u>1081</u>
P 7 30		18	<u>1083</u>	30	<u>876</u>	18	<u>1082</u>
P 8 35		21	<u>1084</u>	35		21	↑
P 9 40		24	<u>1084</u>	40		24	↓
P 10 45		27	<u>1085</u>	45		27	↓
P 11 50		30	<u>1085</u>	50		30	<u>1082</u>
P 12 55		33	<u>1085</u>	55		33	↑
P 13 60		36	<u>1086</u>	60		36	↑
P 14		39	<u>1086</u>	65		39	↑
P 15		42	<u>1086</u>	70		42	<u>1082</u>
P 16		45	<u>1086</u>	75		45	<u>1083</u>
P 17		48		80		48	↑
P 18		51		85		51	↑
P 19		54		90		54	↓
P 20		57				57	↓
		60				60	<u>1093</u>

TKT # 4934
I



4934

25

Company Pendleton Land & Exploration, Inc. Lease & Well No. Wheat Farm #1
 Elevation 1422 Kelly Bush. Formation Simpson Effective Pay - Ft. Ticket No. 4934
 Date 4-23-80 Sec 10 Twp 15S Range 11E Country Wabunsee State Kansas
 Test Approved by Daniel Fredlud Western Representative John Lee - Norman Allen

Formation Test No. 3 Interval Tested from 3194 ft. to 3210 ft. Total Depth 3210 ft.
 Packer Depth 3194 ft. Size 6 3/4 in. Packer Depth 3189 ft. Size 6 3/4 in.
 Packer Depth - ft. Size - in. Packer Depth - ft. Size - in.

Depth of Selective Zone Set _____
 Top Recorder Depth (Inside) 3202 ft. Recorder Number 10980 Cap 4200
 Bottom Recorder Depth (Outside) 3206 ft. Recorder Number 1561 Cap 3200
 Below Straddle Recorder Depth - ft. Recorder Number - Cap -
 Drilling Contractor Edco Drilling Co. (#6) Drill Collar Length 240 I. D. 2 1/4 in.
 Mud Type Chemical Viscosity 46 Weight Pipe Length - I. D. - in.
 Weight 9.3 Water Loss 10 cc. Drill Pipe Length 2923 I. D. 3.8 in.
 Chlorides 900 P.P.M. Test Tool Length 47 ft. Tool Size 4 1/2 in.
 Jars: Make W.T.C. Serial Number 411 Anchor Length 16 ft. Size 4 1/2 in.
 Did Well Flow? No Reversed Out - Surface Choke Size 3/4 in. Bottom Choke Size 3/4 in.
 Main Hole Size 7 7/8 in. Tool Joint Size 3 1/2 IF in.

Blow: Strong blow diminishing slightly at end of test.

Recovered 2110 ft. of salt water (Chlorides: 8000PPM)
.9 Resisitivity at 78°F.
 Recovered _____ ft. of _____
 Recovered _____ ft. of _____
 Recovered _____ ft. of _____
 Recovered _____ ft. of _____

Remarks: _____

Time Set	Packer(s)	A.M. P.M.	Time Started	Off Bottom	A.M. P.M.	Maximum Temperature
	<u>9:30</u>			<u>12:00</u>		<u>117</u>
Initial Hydrostatic Pressure				<u>1583</u>	P.S.I.	
Initial Flow Period			Minutes <u>15</u>	(B) <u>139</u>	P.S.I. to (C)	<u>449</u> P.S.I.
Initial Closed In Period			Minutes <u>45</u>	(D) <u>1086</u>	P.S.I.	
Final Flow Period			Minutes <u>30</u>	(E) <u>494</u>	P.S.I. to (F)	<u>876</u> P.S.I.
Final Closed In Period			Minutes <u>60</u>	(G) <u>1083</u>	P.S.I.	
Final Hydrostatic Pressure				(H) <u>1557</u>	P.S.I.	

WESTERN TESTING CO., INC.

Pressure Data

Date 4-23-80 Test Ticket No. 4934
 Recorder No. 10980 Capacity 4200 Location 3202 Ft.
 Clock No. - Elevation 1422 Kelly Bushing Well Temperature 117 °F

Point	Pressure	P.S.I.	Description	Time Given	Time Computed
				9:30A.	M.
A	1583	P.S.I.	Open Tool	15	15
B	139	P.S.I.	First Flow Pressure	45	45
C	449	P.S.I.	Initial Closed-in Pressure	30	30
D	1086	P.S.I.	Second Flow Pressure	60	60
E	494	P.S.I.	Final Closed-in Pressure		
F	876	P.S.I.			
G	1083	P.S.I.			
H	1557	P.S.I.			

PRESSURE BREAKDOWN

First Flow Pressure Breakdown: <u>3</u> Inc. of <u>5</u> mins. and a final inc. of <u>0</u> Min.	Initial Shut-In Breakdown: <u>15</u> Inc. of <u>3</u> mins. and a final inc. of <u>0</u> Min.	Second Flow Pressure Breakdown: <u>6</u> Inc. of <u>5</u> mins. and a final inc. of <u>0</u> Min.	Final Shut-In Breakdown: <u>20</u> Inc. of <u>3</u> mins. and a final inc. of <u>0</u> Min.
--	---	---	---

Point Mins.	First Flow Pressure		Initial Shut-In		Second Flow Pressure		Final Shut-In	
	Point Mins.	Press.	Point Minutes	Press.	Point Minutes	Press.	Point Minutes	Press.
P 1	0	139	0	449	0	494	0	876
P 2	5	252	3	1047	5	553	3	1064
P 3	10	365	6	1070	10	632	6	1072
P 4	15	449	9	1076	15	700	9	1076
P 5			12	1081	20	760	12	1078
P 6			15	1083	25	812	15	1081
P 7			18	1083	30	876	18	1082
P 8			21	1084			21	1082
P 9			24	1084			24	1082
P10			27	1085			27	1082
P11			30	1085			30	1082
P12			33	1085			33	1082
P13			36	1086			36	1082
P14			39	1086			39	1082
P15			42	1086			42	1082
P16			45	1086			45	1083
P17							48	1083
P18							51	1083
P19							54	1083
P20							57	1083
							60	1083



WESTERN TESTING CO., INC.

FORMATION TESTING

TICKET No 5953

P. O. BOX 1599 WICHITA, KANSAS 67201 PHONE (316) 838-0601

Elevation 14321 B Formation Simpson Eff. Pay Ft.

District Augusta Date 24 April 80 Customer Order No.

COMPANY NAME Pendleton Land & Exploration

ADDRESS

LEASE AND WELL NO Wheat Farm #1 COUNTY Abbeville STATE Kan Sec. 10 Twp. 15S Rge. 11E

Mail Invoice To Same Co. Name Address No. Copies Requested 1

Mail Charts To Same Address No. Copies Requested 5

Formation Test No. 4 Interval Tested from 3223 ft. to 3227 ft. Total Depth 3227 ft. Packer Depth 3218 ft. Size 6 3/4 in. Packer Depth 3223 ft. Size 6 3/4 in. Packer Depth - ft. Size - in. Packer Depth - ft. Size - in. Depth of Selective Zone Set -

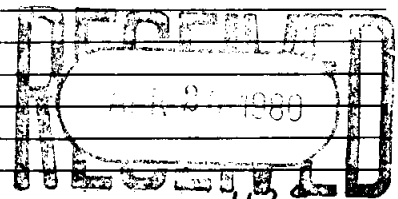
Top Recorder Depth (Inside) 3210 ft. Recorder Number 1559 Cap. 4200 Bottom Recorder Depth (Outside) 3213 ft. Recorder Number 1558 Cap. 4200 Below Straddle Recorder Depth - ft. Recorder Number - Cap. -

Drilling Contractor EDCO #6 Drill Collar Length 240' I. D. 2 1/4 in. Mud Type Chemical Viscosity 39 Weight Pipe Length - I. D. - in. Weight 9.2 Water Loss 10 cc. Drill Pipe Length 2949' I. D. 3.8 in. Chlorides 900 P.P.M. Test Tool Length 38 ft. Tool Size 5 1/2 in. Jars: Make WTC Serial Number 401 Anchor Length 4 ft. Size 5 1/2 in. Did Well Flow? NO Reversed Out NO Surface Choke Size 3/4 in. Bottom Choke Size 3/4 in. Main Hole Size 7 7/8 in. Tool Joint Size 4 1/2 in.

Blow: Weak increasing to strong below on initial flow period / Strong below on final flow period

Recovered 110 ft. of heavy low gravity oil 14 gravity (estimated) Recovered 410 ft. of salt water Recovered - ft. of Recovered - ft. of Recovered - ft. of

Remarks: 10 1/2 miles from Augusta to location on location 11:15 pm 23 April 80 job complete



Time Set Packer(s) 2:40 A.M. Time Started Off Bottom 5:40 A.M. Maximum Temperature 113 Initial Hydrostatic Pressure (A) 1535 P.S.I. Initial Flow Period Minutes 15 (B) 6 P.S.I. to (C) 83 P.S.I. Initial Closed In Period Minutes 45 (D) 1043 P.S.I. Final Flow Period Minutes 60 (E) 156 P.S.I. to (F) 229 P.S.I. Final Closed In Period Minutes 60 (G) 1012 P.S.I. Final Hydrostatic Pressure (H) 1493 P.S.I.

COMPANY TERMS

Western Testing Co., Inc. shall not be liable for damages of any kind to the property or personnel of the one for whom a test is made or for any loss suffered or sustained directly or indirectly through the use of its equipment, of its statements or opinion concerning the results of any test. Tools lost or damaged in the hole shall be paid at cost by the party for whom the test is made.

All charges subject to 12% interest after 60 days from date of invoice. Any expense incurred for collection will be added to the original amount.

Test Approved By Daniel Fredlund Signature of Customer or his authorized representative

Western Representative WK Hager Thank You. 106x.75

FIELD INVOICE

Open Hole Test \$ 550.00 Misrun \$ Straddle Test \$ Jars \$ 300 Selective Zone \$ Safety Join \$ 50.00 Standby \$ Evaluation \$ Extra Packer \$ Circ. Sub. \$ Mileage \$ 79.50 Fluid Sampler \$ Extra Charts \$ TOTAL \$ 979.50

WESTERN TESTING CO., INC.

Pressure Data

Date 4-24-80 Test Ticket No. 5953
 Recorder No. 1559 Capacity 4200 Location 3210 Ft.
 Clock No. _____ Elevation 1422 KB Well Temperature 113 °F

Point	Pressure	Time Given	Time Computed
A Initial Hydrostatic Mud	<u>1536</u> P.S.I.	<u>2:40 A</u> M	
B First Initial Flow Pressure	<u>4</u> P.S.I.	<u>15</u> Mins.	<u>15</u> Mins.
C First Final Flow Pressure	<u>69</u> P.S.I.	<u>45</u> Mins.	<u>45</u> Mins.
D Initial Closed-in Pressure	<u>1041</u> P.S.I.	<u>60</u> Mins.	<u>60</u> Mins.
E Second Initial Flow Pressure	<u>146</u> P.S.I.	<u>60</u> Mins.	<u>69</u> Mins.
F Second Final Flow Pressure	<u>228</u> P.S.I.		
G Final Closed-in Pressure	<u>1020</u> P.S.I.		
H Final Hydrostatic Mud	<u>1473</u> P.S.I.		

PRESSURE BREAKDOWN

First Flow Pressure
 Breakdown: 3 Inc.
 of 5 mins. and a
 final inc. of 0 Min.

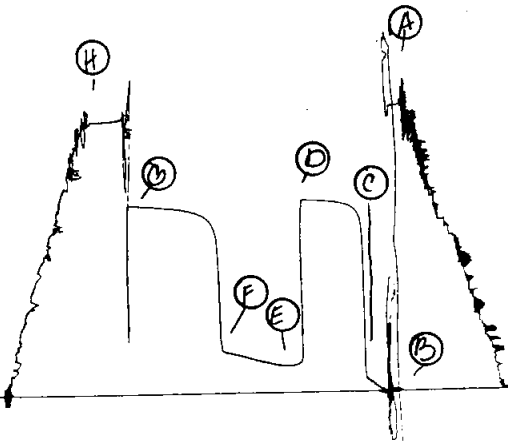
Initial Shut-In
 Breakdown: 15 Inc.
 of 3 mins. and a
 final inc. of 0 Min.

Second Flow Pressure
 Breakdown: 12 Inc.
 of 5 mins. and a
 final inc. of 0 Min.

Final Shut-In
 Breakdown: 23 Inc.
 of 3 mins. and a
 final inc. of 0 Min.

Point Mins.	Press.	Point Minutes	Press.	Point Minutes	Press.	Point Minutes	Press.
P 1	<u>4</u>	0	<u>69</u>	0	<u>146</u>	0	<u>228</u>
P 2	<u>15</u>	3	<u>873</u>	5	<u>146</u>	3	<u>693</u>
P 3	<u>40</u>	6	<u>971</u>	10	<u>144</u>	6	<u>893</u>
P 4	<u>69</u>	9	<u>994</u>	15	<u>146</u>	9	<u>931</u>
P 5		12	<u>1008</u>	20	<u>153</u>	12	<u>952</u>
P 6		15	<u>1015</u>	25	<u>163</u>	15	<u>964</u>
P 7		18	<u>1020</u>	30	<u>171</u>	18	<u>977</u>
P 8		21	<u>1025</u>	35	<u>180</u>	21	<u>983</u>
P 9		24	<u>1029</u>	40	<u>190</u>	24	<u>990</u>
P10		27	<u>1031</u>	45	<u>201</u>	27	<u>994</u>
P11		30	<u>1033</u>	50	<u>211</u>	30	<u>997</u>
P12		33	<u>1036</u>	55	<u>219</u>	33	<u>1000</u>
P13		36	<u>1038</u>	60	<u>228</u>	36	<u>1002</u>
P14		39	<u>1039</u>	65		39	<u>1004</u>
P15		42	<u>1040</u>	70		42	<u>1006</u>
P16		45	<u>1041</u>	75		45	<u>1008</u>
P17		48		80		48	<u>1010</u>
P18		51		85		51	<u>1013</u>
P19		54		90		54	<u>1015</u>
P20		57				57	<u>1016</u>
		60				60	<u>1017</u>
						63	<u>1018</u>
						66	<u>1019</u>
						69	<u>1020</u>

Rt # 5953
I



Company Pendleton Land & Exploration, Inc. Lease & Well No. Wheat Farm #1
 Elevation 1422 Kelly Bushing Simpson Formation Simpson Effective Pay ---- Ft. Ticker No. 5953
 Date 4/24/80 Sec. 10 Twp. 15S Range. 11E County Wabaunsee State Kansas
 Test Approved by Daviel Fredlund Western Representative W. K. Hager

Formation Test No. 4 Interval Tested from 3223 ft. to 3227 ft. Total Depth 3227 ft.
 Packer Depth 3218 ft. Size 6 3/4 in. Packer Depth - ft. Size - in.
 Packer Depth 3223 ft. Size 6 3/4 in. Packer Depth - ft. Size - in.

Depth of Selective Zone Set -
 Top Recorder Depth (Inside) 3210 ft. Recorder Number 1559 Cap. 4200
 Bottom Recorder Depth (Outside) 3213 ft. Recorder Number 1558 Cap. 4200
 Below Straddle Recorder Depth - ft. Recorder Number - Cap. -
 Drilling Contractor Edco Drlg. Rig #6 Drill Collar Length 240 I. D. 2 1/2 in.
 Mud Type chemical Viscosity 39 Weight Pipe Length - I. D. - in.
 Weight 9.2 Water Loss 10 cc. Drill Pipe Length 2949 I. D. 3.8 in.
 Chlorides 900 P.P.M. Test Tool Length 38 ft. Tool Size 5 1/2 in.
 Jars: Make WTC Serial Number 401 Anchor Length 4 ft. Size 5 1/2 in.
 Did Well Flow? No Reversed Out No Surface Choke Size 3/4 in. Bottom Choke Size 3/4 in.
 Main Hole Size 7 7/8 in. Tool Joint Size 4 1/2 FH in.

Blow: Weak increasing to strong blow on initial flow period/strong blow on final flow period.

Recovered 110 ft. of heavy low gravity oil 14 gravity (estimated)
 Recovered 410 ft. of salt water
 Recovered ft. of
 Recovered ft. of
 Recovered ft. of

Remarks:

Time Set	<u>2:40</u>	<u>A.M.</u>	Time Started Off Bottom	<u>5:40</u>	<u>A.M.</u>	Maximum Temperature	<u>113°</u>
Initial Hydrostatic Pressure		P.M.		<u>1536</u>	P.M.		
Initial Flow Period			Minutes <u>15</u>	(B) <u>4</u>	P.S.I. to (C)	<u>69</u>	P.S.I.
Initial Closed In Period			Minutes <u>45</u>	(D) <u>1041</u>	P.S.I.		
Final Flow Period			Minutes <u>60</u>	(E) <u>146</u>	P.S.I. to (F)	<u>228</u>	P.S.I.
Final Closed In Period			Minutes <u>69</u>	(G) <u>1020</u>	P.S.I.		
Final Hydrostatic Pressure				(H) <u>1473</u>	P.S.I.		

WESTERN TESTING CO., INC.
Pressure Data

Date 4/24/80 Test Ticket No. 5953
 Recorder No. 1559 Capacity 4200 Location 3210 Ft.
 Clock No. ---- Elevation 1422 Kelly Bushing Well Temperature 113 °F

Point	Pressure		Time Given	Time Computed
A Initial Hydrostatic Mud	1536	P.S.I.	2:40A	M
B First Initial Flow Pressure	4	P.S.I.	15	Mins. 15 Mins.
C First Final Flow Pressure	69	P.S.I.	45	Mins. 45 Mins.
D Initial Closed-in Pressure	1041	P.S.I.	60	Mins. 60 Mins.
E Second Initial Flow Pressure	146	P.S.I.	60	Mins. 69 Mins.
F Second Final Flow Pressure	228	P.S.I.		
G Final Closed-in Pressure	1020	P.S.I.		
H Final Hydrostatic Mud	1473	P.S.I.		

PRESSURE BREAKDOWN

First Flow Pressure		Initial Shut-In		Second Flow Pressure		Final Shut-In	
Breakdown: <u>3</u> Inc.		Breakdown: <u>15</u> Inc.		Breakdown: <u>12</u> Inc.		Breakdown: <u>23</u> Inc.	
of <u>5</u> mins. and a		of <u>3</u> mins. and a		of <u>5</u> mins. and a		of <u>3</u> mins. and a	
final inc. of <u>0</u> Min.		final inc. of <u>0</u> Min.		final inc. of <u>0</u> Min.		final inc. of <u>0</u> Min.	
Point Mins.	Press.	Point Minutes	Press.	Point Minutes	Press.	Point Minutes	Press.
P 1	0	0	69	0	146	0	228
P 2	5	3	873	5	146	3	693
P 3	10	6	971	10	144	6	893
P 4	15	9	994	15	146	9	931
P 5		12	1008	20	153	12	952
P 6		15	1015	25	163	15	964
P 7		18	1020	30	171	18	977
P 8		21	1025	35	180	21	983
P 9		24	1029	40	190	24	990
P10		27	1031	45	201	27	994
P11		30	1033	50	211	30	997
P12		33	1036	55	219	33	1000
P13		36	1038	60	228	36	1002
P14		39	1039			39	1004
P15		42	1040			42	1006
P16		45	1041			45	1008
P17						48	1010
P18						51	1013
P19						54	1015
P20						57	1016
						60	1018
						63	1018
						66	1019
						69	1020