

**WELL COMPLETION REPORT AND DRILLER'S LOG**

API No. 15 - 059 - 21744  
 County Number

Operator **Ben Nitcher**

Address **Box 488, Wellsville, Ks.**

Well No. **#2** Lease Name **Lucan (LUKAN 2-KCC Record)**

Footage Location  
**500** feet from (N) line **500** feet from (E) line

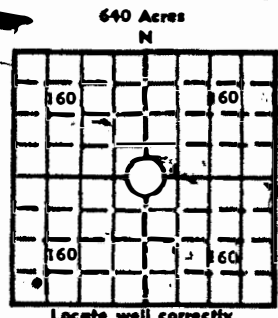
Principal Contractor **Ben Nitcher** Geologist

Spud Date **2-10-81** Date Completed **2-17-81** Total Depth **697** P.B.T.D.

Directional Deviation Oil and/or Gas Purchaser **oil**

*State Geological Survey  
 WICHITA BRANCH*

700 FSL and 460 FWL  
 NW SW SW  
 KCC Record  
 S. 35 T. 15S R. 20  
 Loc. 400' N. 500' E From S/W  
 Corner Sec 35  
 County **Franklin**



Elev.: Gr. \_\_\_\_\_  
 DF \_\_\_\_\_ KB \_\_\_\_\_

**CASING RECORD**

Report of all strings set—surface, intermediate, production, etc.

Purpose of string	Size hole drilled	Size casing set (in O.D.)	Weight lbs./ft.	Setting depth	Type cement	Sacks	Type and percent additives
Surface	7-7/8	6-1/4'		60'	Portland		
Casing	5-1/4"	2-3/8		697	Portland		
Cemented to the surface with 86 sacks of concrete.							

**LINER RECORD**

**PERFORATION RECORD**

Top, ft.	Bottom, ft.	Sacks cement	Shots per ft.	Size & type	Depth interval
<b>TUBING RECORD</b>					
Size	Setting depth	Packer set at			
2 3/8	697				

**ACID, FRACTURE, SHOT, CEMENT SQUEEZE RECORD**

Amount and kind of material used	Depth interval treated
Well completed and washed then acidized (15% acid)	MAY 1 1981

**INITIAL PRODUCTION**

Date of first production **March 1981** Producing method (flowing, pumping, gas lift, etc.) **Pumping**

RATE OF PRODUCTION PER 24 HOURS  
 Oil **2** bbls. Gas **7** MCF Water **1/10** bbls. Gas-oil ratio **N/A** CFPB

Disposition of gas (vented, used on lease or sold) **vented** Producing interval(s) **15 min. on 45 min. off.**

INSTRUCTIONS: As provided in KCC Rule 82-2-125, within 90 days after completion of a well, one completed copy of this Drillers Log shall be transmitted to the State Geological Survey of Kansas, 4150 Monroe Street, Wichita, Kansas 67209. Copies of this form are available from the Conservation Division, State Corporation Commission, 245 No. Water, Wichita, Kansas 67202. Phone AC 316-522-2206. If confidential custody is desired, please note Rule 82-2-125. Drillers Logs will be on open file in the Oil and Gas Division, State Geological Survey of Kansas, Lawrence, Kansas 66044.

Operator Ben Nitcher

DESIGNATE TYPE OF COMP.: OIL, GAS, DRY HOLE, SWDW, ETC.:

Well No. #2

Lease Name Lucan

*oil well*

s. 35 T. 15 S. 20 E.

**WELL LOG**

Show all important zones of porosity and contents thereof; cored intervals, and all drill-stem tests, including depth interval tested, cushion used, time tool open, flowing and shut-in pressures, and recoveries.

SHOW GEOLOGICAL MARKERS, LOGS RUN, OR OTHER DESCRIPTIVE INFORMATION.

FORMATION DESCRIPTION, CONTENTS, ETC.	TOP	BOTTOM	NAME	DEPTH
Top Soil	0	3		3
Clay	3	15		12
Shale	15	32		17
Lime	32	36		4
Shale	36	59		23
Lime	59	75		16
Shale	75	85		20
Lime	85	113		28
Shale	113	118		5
Lime	118	136		18
Shale	136	219		83
Lime	219	238		19
Shale	238	260		22
Lime	260	266		6
Shale	266	297		31
Lime	297	305		8
Shale	305	310		5
Lime	310	312		2
Shal3	312	327		15
Lime	327	347		20
Shale	347	358		11
Lime	358	380		22
Shale	380	385		5
Lime	385	400		15
Shale	400	553		153
Lime	553	557		4
Shale	557	592		35
Lime	592	600		8
Shale	600	615		15
Lime	615	620		5
Shale	620	649		29
Coal	649	650		1
Shale	650	662		12
Lime	662	664		2
White Shale	664	<del>668</del> 667	<del>20</del>	84
Oil Sand	668	676		8
Shale	676	697	T.D.	21

USE ADDITIONAL SHEETS, IF NECESSARY, TO COMPLETE WELL RECORD.

Date Received

*[Signature]*

Signature

owner

Title

5-11-82

Date