

DST REPORT

GENERAL INFORMATION

DATE : 5-6-95  
CUSTOMER : KNIGHTON OIL COMPANY INC.  
WELL : #1 TEST: 1  
ELEVATION: 1487 KB  
SECTION : 11  
RANGE : 7E COUNTY: MORRIS  
GAUGE SN#: 10270 RANGE : 4150  
TICKET : 21255  
LEASE : LEEDS  
GEOLOGIST: MONTAGUE  
FORMATION: LANSING  
TOWNSHIP : 16S  
STATE : KS  
CLOCK : 12

WELL INFORMATION

PERFORATION INTERVAL FROM: 1405.00 ft TO: 1415.00 ft TVD: 1415.0 ft  
DEPTH OF SELECTIVE ZONE: TEST TYPE: OIL  
DEPTH OF RECORDERS: 1407.0 ft 1410.0 ft  
TEMPERATURE: 82.0  
DRILL COLLAR LENGTH: 360.0 ft I.D.: 2.200 in  
WEIGHT PIPE LENGTH : 0.0 ft I.D.: 0.000 in  
DRILL PIPE LENGTH : 1025.0 ft I.D.: 2.500 in  
TEST TOOL LENGTH : 20.0 ft TOOL SIZE : 5.500 in  
ANCHOR LENGTH : 10.0 ft ANCHOR SIZE: 5.500 in  
SURFACE CHOKE SIZE : 0.750 in BOTTOM CHOKE SIZE: 0.750 in  
MAIN HOLE SIZE : 7.875 in TOOL JOINT SIZE : 3.5XH  
PACKER DEPTH: 1400.0 ft SIZE: 6.630 in  
PACKER DEPTH: 1405.0 ft SIZE: 6.630 in  
PACKER DEPTH: 0.0 ft SIZE: 0.000 in  
PACKER DEPTH: 0.0 ft SIZE: 0.000 in

MUD INFORMATION

DRILLING CON. : SUMMIT DRILLING  
MUD TYPE : CHEMICAL VISCOSITY : 36.00 cp  
WEIGHT : 8.900 ppg WATER LOSS: 10.800 cc  
CHLORIDES : 950 ppm  
JARS-MAKE :  
DID WELL FLOW?: NO SERIAL NUMBER:  
REVERSED OUT?: NO

COMMENTS

Comment

INITIAL FLOW PERIOD-WEAK BLOW THROUGHOUT 1/2 TO  
3/4 INCH BLOW. FINAL FLOW PERIOD-WEAK BLOW  
THROUGHOUT 1 TO 2 INCH BLOW.

DST REPORT (CONTINUED)

FLUID RECOVERY

Feet of Fluid	% Oil	% Gas	% Water	% Mud	Comments
20.0	0.0	0.0	0.0	100.0	MUD

RATE INFORMATION

OIL VOLUME:	0.0000	STB	TOTAL FLOW TIME:	75.0000	min.
GAS VOLUME:	0.0000	SCF	AVERAGE OIL RATE:	0.0000	STB/D
MUD VOLUME:	0.0940	STB	AVERAGE WATER RATE:	0.0000	STB/D
WATER VOLUME:	0.0000	STB			
TOTAL FLUID :	0.0940	STB			

FIELD TIME & PRESSURE INFORMATION

INITIAL HYDROSTATIC PRESSURE: 665.00

Description	Duration	p1	p End
INITIAL FLOW	30.00	20.00	20.00
INITIAL SHUT-IN	30.00		354.00
FINAL FLOW	45.00	20.00	20.00
FINAL SHUT-IN	90.00		395.00

FINAL HYDROSTATIC PRESSURE: 655.00

OFFICE TIME & PRESSURE INFORMATION

INITIAL HYDROSTATIC PRESSURE: 666.00

Description	Duration	p1	p End
INITIAL FLOW	30.00	26.00	26.00
INITIAL SHUT-IN	30.00		351.00
FINAL FLOW	45.00	26.00	26.00
FINAL SHUT-IN	93.00		393.00

FINAL HYDROSTATIC PRESSURE: 654.00

PRESSURE TRANSIENT REPORT

GENERAL INFORMATION

DATE : 5-6-95	TICKET : 21255
CUSTOMER : KNIGHTON OIL COMPANY INC.	LEASE : LEEDS
WELL : #1 TEST: 1	GEOLOGIST: MONTAGUE
ELEVATION: 1487 KB	FORMATION: LANSING
SECTION : 11	TOWNSHIP : 16S
RANGE : 7E COUNTY: MORRIS	STATE : KS
GAUGE SN#: 10270 RANGE : 4150	CLOCK : 12

INITIAL FLOW

<u>Time (min)</u>	<u>Pressure</u>	<u>Delta P</u>
0.00	26.00	26.00
5.00	26.00	0.00
10.00	26.00	0.00
15.00	26.00	0.00
20.00	26.00	0.00
25.00	26.00	0.00
30.00	26.00	0.00

INITIAL SHUT IN

<u>Time (min)</u>	<u>Pressure</u>	<u>Delta P</u>	<u>Horner T</u>
3.00	28.00	28.00	0.00
6.00	48.00	20.00	0.00
9.00	91.00	43.00	0.00
12.00	133.00	42.00	0.00
15.00	193.00	60.00	0.00
18.00	245.00	52.00	0.00
21.00	283.00	38.00	0.00
24.00	319.00	36.00	0.00
27.00	341.00	22.00	0.00
30.00	351.00	10.00	0.00

FINAL FLOW

<u>Time (min)</u>	<u>Pressure</u>	<u>Delta P</u>
0.00	26.00	26.00

PRESSURE TRANSIENT REPORT (CONTINUED)

FINAL FLOW (CONTINUED)

Time (min)	Pressure	Delta P
5.00	26.00	0.00
10.00	26.00	0.00
15.00	26.00	0.00
20.00	26.00	0.00
25.00	26.00	0.00
30.00	26.00	0.00
35.00	26.00	0.00
40.00	26.00	0.00
45.00	26.00	0.00

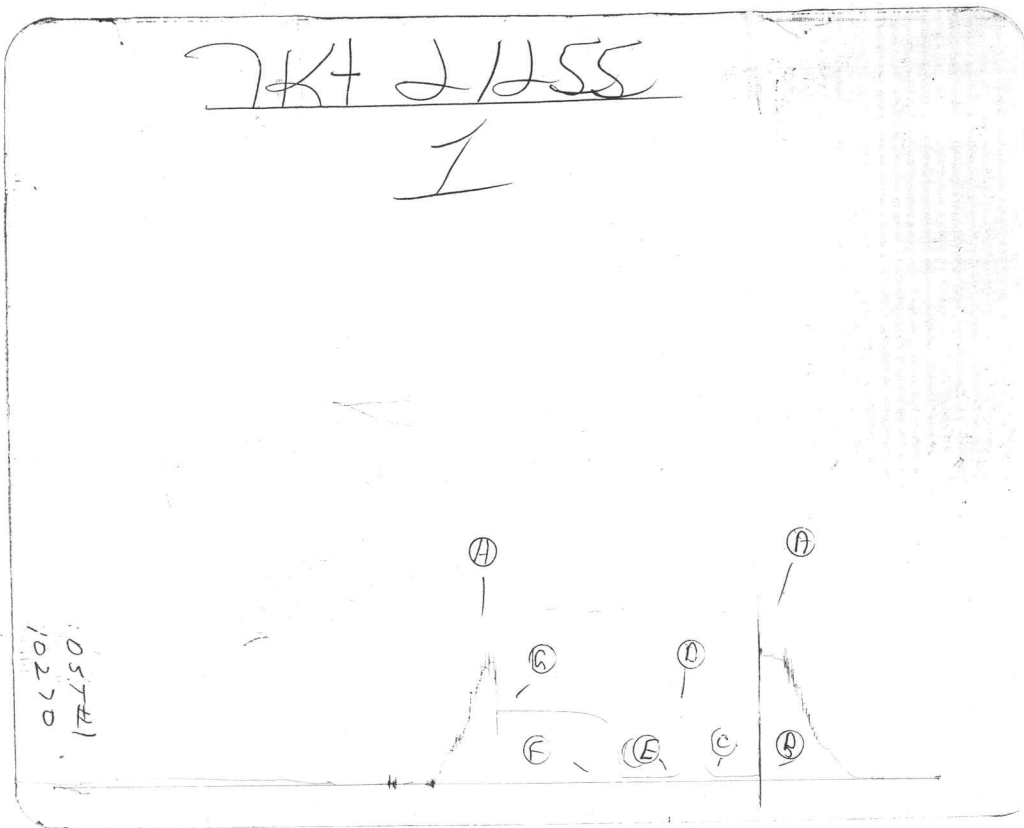
FINAL SHUT IN

Time (min)	Pressure	Delta P	Horner T
3.00	133.00	133.00	0.00
6.00	248.00	115.00	0.00
9.00	299.00	51.00	0.00
12.00	320.00	21.00	0.00
15.00	340.00	20.00	0.00
18.00	351.00	11.00	0.00
21.00	359.00	8.00	0.00
24.00	367.00	8.00	0.00
27.00	372.00	5.00	0.00
30.00	374.00	2.00	0.00
33.00	376.00	2.00	0.00
36.00	378.00	2.00	0.00
39.00	380.00	2.00	0.00
42.00	382.00	2.00	0.00
45.00	384.00	2.00	0.00
48.00	385.00	1.00	0.00
51.00	386.00	1.00	0.00
54.00	387.00	1.00	0.00
57.00	388.00	1.00	0.00
60.00	389.00	1.00	0.00
63.00	390.00	1.00	0.00
66.00	390.00	0.00	0.00
69.00	391.00	1.00	0.00
72.00	391.00	0.00	0.00
75.00	391.00	0.00	0.00
78.00	392.00	1.00	0.00
81.00	392.00	0.00	0.00
84.00	392.00	0.00	0.00
87.00	393.00	1.00	0.00

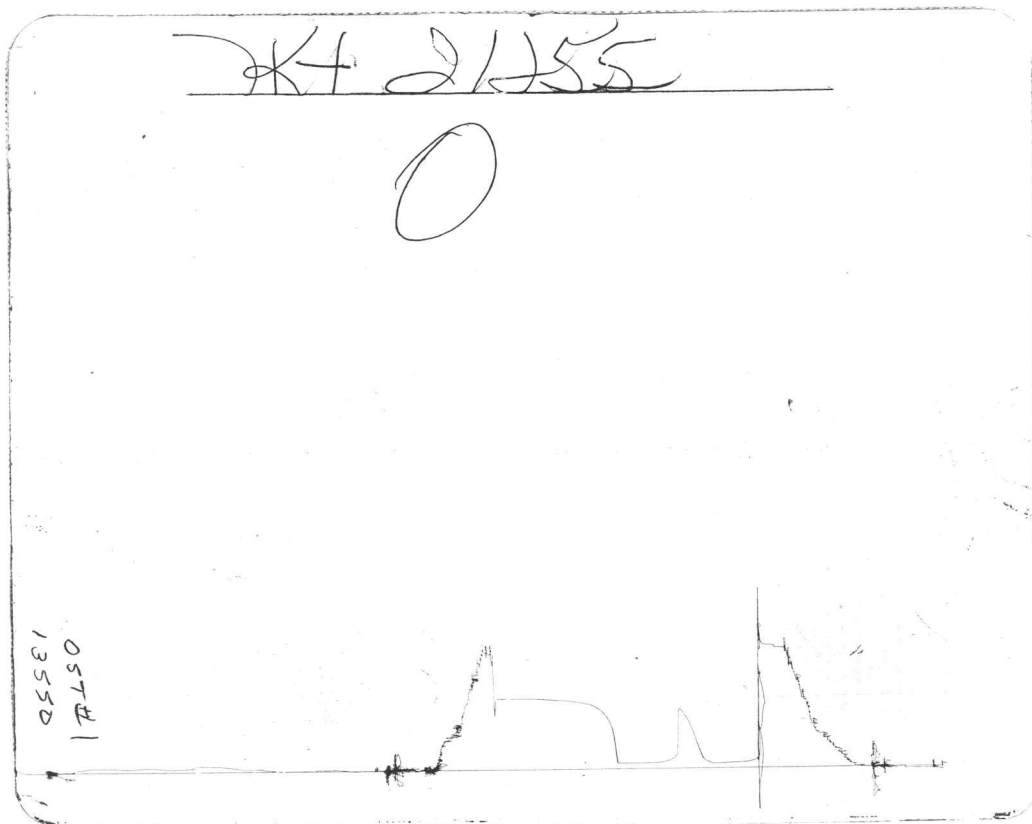
PRESSURE TRANSIENT REPORT (CONTINUED)

FINAL SHUT IN (CONTINUED)

<u>Time (min)</u>	<u>Pressure</u>	<u>Delta P</u>	<u>Horner T</u>
90.00	393.00	0.00	0.00
93.00	393.00	0.00	0.00



Inside Recorder



Outside Recorder