

STATE CORPORATION COMMISSION OF KANSAS
OIL & GAS CONSERVATION DIVISION
WELL COMPLETION OR RECOMPLETION FORM
ACO-1 WELL HISTORY

DESCRIPTION OF WELL AND LEASE

Operator: license # 5353
name Don C. Bloomer
address PO Box 40
City/State/Zip Rantoul, Ks. 66079

Operator Contact Person Don C. Bloomer
Phone 913-878-3497

Contractor: license # 5353
name Bloomer Well Service/Don C. Bloomer

Wellsite Geologist none

Phone
PURCHASER Amoco Oil

Type of Completion
 New Well Re-Entry Workover

Oil SWD Temp Abd
 Gas Inj Delayed Comp
 Dry Other (Core, Water Supply etc.)

If OWWO: old well info as follows:
Operator
Well Name
Comp. Date Old Total Depth

WELL HISTORY

Drilling Method: Mud Rotary Air Rotary Cable
Date Date Reached TD Completion Date

677.15' none
Total Depth PBTD

Amount of Surface Pipe Set and Cemented at 21 feet

Multiple Stage Cementing Collar Used? Yes No

If Yes, Show Depth Set feet

If alternate 2 completion, cement circulated from Surface feet depth to 677 w/ 72 SX cmt

API NO. 15 - 059-23,622

County Franklin

SE1-SE1 Sec 8 Twp 16S Rge 21 East West

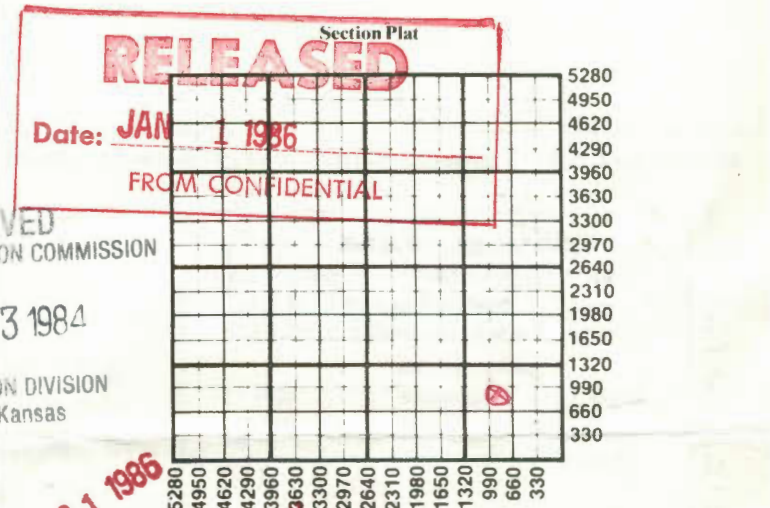
820 Ft North from Southeast Corner of Section
825 Ft West from Southeast Corner of Section
(Note: locate well in section plat below)

Lease Name Massengale Well# 4

Field Name Wellsville

Producing Formation Squirrel

Elevation: Ground unknown KB



WATER SUPPLY INFORMATION

Source of Water:
Division of Water Resources Permit # none

Groundwater Ft North From Southeast Corner and Ft. West From Southeast Corner of (Well) Sec Twp Rge East West

Surface Water Ft North From Southeast Corner and (Stream, Pond etc.) Ft West From Southeast Corner Sec Twp Rge East West

Other (explain) (purchased from city, R.W.D.#)

Disposition of Produced Water: Disposal Repressuring

Docket #

INSTRUCTIONS: This form shall be completed in duplicate and filed with the Kansas Corporation Commission, 200 Colorado Derby Building, Wichita, Kansas 67202, within 90 days after completion or recompletion of any well. Rules 82-3-130 and 82-3-107 apply. Information on side two of this form will be held confidential for a period of 12 months if requested in writing and submitted with the form. See rule 82-3-107 for confidentiality in excess of 12 months. One copy of all wireline logs and drillers time log shall be attached with this form. Submit CP-4 form with all plugged wells. Submit CP-111 form with all temporarily abandoned wells.

SIDE TWO

Operator Name ... Don C. Bloomer ... Lease Name Massengale Well# 4 SEC 8 TWP 16S RGE 21 East West

WELL LOG

INSTRUCTIONS: Show important tops and base of formations penetrated. Detail all cores. Report all drill stem tests giving interval tested, time tool open and closed, flowing and shut-in pressures, whether shut-in pressure reached static level, hydrostatic pressures, bottom hole temperature, fluid recovery, and flow rates if gas to surface during test. Attach extra sheet if more space is needed. Attach copy of log.

Drill Stem Tests Taken Yes No
 Samples Sent to Geological Survey Yes No
 Cores Taken Yes No

Formation Description
 Log Sample

Name Top Bottom

SEE ATTACHED WELL LOG

TUBING RECORD size 1" set at 644 seating nipple packer at none		Liner Run <input type="checkbox"/> Yes <input checked="" type="checkbox"/> No			
Date of First Production	Producing method <input type="checkbox"/> flowing <input checked="" type="checkbox"/> pumping <input type="checkbox"/> gas lift <input type="checkbox"/> Other (explain)				
Estimated Production Per 24 Hours	Oil	Gas	Water	Gas-Oil Ratio	Gravity
	2 Bbls	none MCF	0 Bbls	none CFPB	

Disposition of gas: vented
 sold
 used on lease

METHOD OF COMPLETION
 open hole perforation
 other (specify)
 Dually Completed.
 Commingled

PRODUCTION INTERVAL



CASING RECORD <input checked="" type="checkbox"/> new <input type="checkbox"/> used							
Report all strings set - conductor, surface, intermediate, production, etc.							
Purpose of string	size hole drilled	size casing set (in O.D.)	weight lbs/ft.	setting depth	type of cement	# sacks used	type and percent additives
Surface pipe	10 3/4	6 1/4		21	Portland	8	none
completion	5 1/2	2 1/2		677	Portland	72	
PERFORATION RECORD				Acid, Fracture, Shot, Cement Squeeze Record			
shots per foot	specify footage of each interval perforated			(amount and kind of material used)			Depth
10	648-655			30sx 1020 sand			648-655

DON C. BLOOMER

BLOOMER WELL SERVICE
P.O. BOX 40
RANTOUL, KANSAS 66079 *

913-878-3497

8-165-21E
SE SE

M & N OIL
Massengale #4
Well log

<u>Thickness of Strata</u>	<u>Name of Rock</u>	<u>Total Depth</u>
13	soil and clay	13
18	lime	31
7	shale	33
10	lime	48
4	shale	52
18	lime	70
7	shale	77
4	red bed	81
31	shale	112
5	shells	117
17	lime	134
65	shale	201
23	lime	224
26	shale	250
8	lime	258
20	shale	278
4	lime	282
30	shale	312
21	lime	333
10	shale	343
22	lime	365
5	shale	370
12	lime	382
147	shale	529
12	lime	541
42	shale	583
8	lime	591
14	shale	605
2	lime	607
8	shale	615
2	lime	617
4	shale	621
6	lime	627
7	shale	634
1	lime	635
1	w. shale	636
2	b. shale	638
2	lime	640
1	w. shale	641
1	w. shale	642
1	w. shale	643
2	w. shale	645
1	broken oil sand	646
8	oil sand	654
45	shale	699

JAN 21 1986

State Geological Survey
WICHITA BRANCH

RECEIVED
STATE CORPORATION COMMISSION

OCT 03 1984

CONSERVATION DIVISION
Wichita, Kansas

OCT 5 1984
CONFIDENTIAL
State Geological Survey
WICHITA BRANCH

8

Well Log
N&M Oil
Massengale #4

8-16-21. E

3	lime	700
1	w. shale	701
1	blacksand	702 (no odor)
2	sandy shale	704
2	sandy shale	706
2	sandy shale	708
4	sandy shale	712 TD

First Squirrel Core

1	11:56-11:59	3	minutes	647
2	11:59-12:01	2	"	648
3	12:01-12:04	3	"	649
4	12:04-12:07	3	"	650
5	12:07-12:10	3	"	651
6	12:10-12:13	3	"	652
7	12:13-12:16	3	"	653
8	12:16-12:19	3	"	654
9	12:19-12:22	3	"	655
10	12:22-12:25	3	"	656
11	12:25-12:29	4	"	657
12	12:29-12:32	3	"	658
13	12:32-12:36	4	"	659
14	12:36-12:40	4	"	660
15	12:40-12:44	4	"	661

JAN 21 1986

State Geological Survey
WICHITA BRANCH

RECEIVED
STATE CORPORATION COMMISSION

OCT 03 1984

CONSERVATION DIVISION
Wichita, Kansas

OCT 5 1984
CONFIDENTIAL

State Geological Survey
WICHITA BRANCH