

State Geological Survey  
WICHITA, BRANCH

KANSAS DRILLERS LOG

S. 24 T. 16 R. 21 E  
W

Loc. SE NE NE  
County SW-1000 Miami

API No. 15 — 121 — 20,253  
County Number

Operator  
Reese Enterprises

Address  
Box 96 Wellsville, Kansas 66092

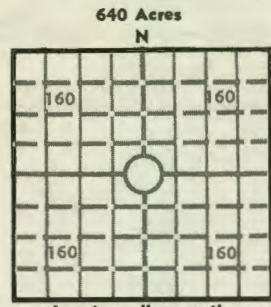
Well No. #R-1 Lease Name Murphy

Footage Location 4450 FSL: 945 FEL-1000  
880' feet from (N) (S) line 660' feet from (E) (W) line

Principal Contractor Kent Drilling Co. Geologist

Spud Date Oct. 16, 1974 Total Depth 700' P.B.T.D. 683.2

Date Completed Oct. 20, 1974 Oil Purchaser Bluebird Oil Co.



Locate well correctly  
Elev.: Gr. \_\_\_\_\_  
DF \_\_\_\_\_ KB \_\_\_\_\_

CASING RECORD

Report of all strings set — surface, intermediot, production, etc.

Purpose of string	Size hole drilled	Size casing set (in O.D.)	Weight lbs/ft.	Setting depth	Type cement	Sacks	Type and percent additives
Production	6 1/4	4 1/2	9.5	700'	Bulk	105	2 sacks Jell 4 sacks Salt

LINER RECORD

PERFORATION RECORD

Top, ft.	Bottom, ft.	Sacks cement	Shots per ft.	Size & type	Depth interval
0			1	Glass	683.2 to 692.2

TUBING RECORD

Size	Setting depth	Packer set at
2"	673	None

ACID, FRACTURE, SHOT, CEMENT SQUEEZE RECORD

Amount and kind of material used	Depth interval treated
50 gal. 15% Acid, 30 sx. sand with 105 bbl. oil	683.2 to 692.2

INITIAL PRODUCTION

Date of first production <u>Nov. 26, 1974</u>	Producing method (flowing, pumping, gas lift, etc.) <u>Pumping</u>
RATE OF PRODUCTION PER 24 HOURS	Oil <u>10</u> bbls. Gas <u>0</u> MCF Water <u>0</u> bbls. Gas-oil ratio _____ CFPB
Disposition of gas (vented, used on lease or sold) <u>Vented</u>	Producing interval (s) <u>683.2 to 692.2</u>

INSTRUCTIONS: As provided in KCC Rule 82-2-125, within 90 days after completion of a well, one completed copy of this Drillers Log shall be trans- mitted to the State Geological Survey of Kansas, 4150 Monroe Street, Wichita, Kansas 67209. Copies of this form are available from the Conservation Division, State Corporation Commission, 3830 So. Meridian (P.O. Box 17027), Wichita, Kansas 66217. Phone AC 316-522-2206. If confidential custody is desired, please note Rule 82-2-125. Drillers Logs will be on open file in the Oil and Gas Division, State Geological Survey of Kansas, Lawrence, Kansas 66044.

Operator  
Reese Enterprises, Inc.

DESIGNATE TYPE OF COMP.: OIL, GAS,  
DRY HOLE, SWDW, ETC.:

Oil

Well No.  
R-1

Lease Name  
Murphy

S 24 T 16 R 21 E W

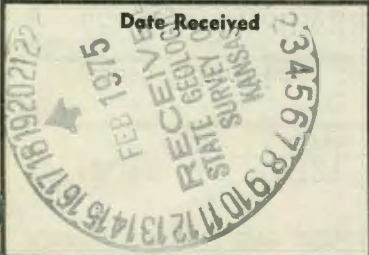
**WELL LOG**

Show all important zones of porosity and contents thereof; cored intervals, and all drill-stem tests, including depth interval tested, cushion used, time tool open, flowing and shut-in pressures, and recoveries.

SHOW GEOLOGICAL MARKERS, LOGS RUN,  
OR OTHER DESCRIPTIVE INFORMATION.

FORMATION DESCRIPTION, CONTENTS, ETC.	TOP	BOTTOM	NAME	DEPTH
Soil & Clay	9	9		
Lime	9	18		
Blk. Shale	4	22		
Lime	13	35		
Shale	10	45		
Lime	18	63		
Shale	25	88		
Lime	27	105		
Shale	91	196		
Lime	19	215		
Shale	33	248		
Lime	6	254		
Shale	23	277		
Lime	2	279		
Shale	7	286		
Lime	9	295		
Shale	20	315		
Lime	25	340		
Shale	9	349		
Lime	21	370		
Shale	5	375		
Lime	12	387		
Shale	169	556		
Lime	7	563		
Shale	29	592		
Lime	5	597		
Shale	20	617		
Lime	3	620		
Shale & Shells	51	671		
Oil Sand	14	685		
Shale	15	700T.D.		

USE ADDITIONAL SHEETS, IF NECESSARY, TO COMPLETE WELL RECORD.



Signature: *Jack W. Andrus*  
Title: *Production Supt.*  
Date: *Dec. 30, 1974*