

Released
 12/11/81
 S. 24 T. 16 R. 21 E
 XV

API No. 15 — 121 — 20940
 County Number

Loc. E 1/2 - NW 1/4
 County Miami

Operator
 Reese Exploration, Inc.

Address
 PO Box 11598, Kansas City, Mo. 64138

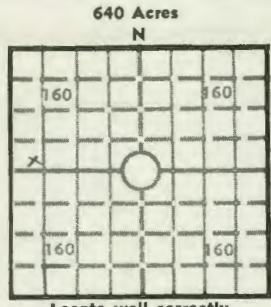
Well No. 11-79 Lease Name Schendel

Footage Location 2310 feet from (N) line 452 feet from (W) line
 3261 FSL; 3512 FEL-1000

Principal Contractor Michael Drilling Geologist

Spud Date July 2, 1979 Total Depth 671' P.B.T.D.

Date Completed July 1979 Oil Purchaser Bluebird Oil



Elev.: Gr. _____
 DF _____ KB _____

CASING RECORD

Report of all strings set — surface, intermediate, production, etc.

Purpose of string	Size hole drilled	Size casing set (in O.D.)	Weight lbs/ft.	Setting depth	Type cement	Sacks	Type and percent additives
Surface	8-7/8	6-1/4	17#	40'	Portland	4	none
2"	5-1/4	2-3/8	4#	651'	"	90	2% Gel

LINER RECORD

PERFORATION RECORD

Top, ft.	Bottom, ft.	Sacks cement	Shots per ft.	Size & type	Depth interval
none					

Size	Setting depth	Packer set at
none		

ACID, FRACTURE, SHOT, CEMENT SQUEEZE RECORD

Amount and kind of material used	Depth interval treated
Frac - Hot Oil 150 sacks sand	651' to 671'

INITIAL PRODUCTION

Date of first production August 1979	Producing method (flowing, pumping, gas lift, etc.) Pumping
RATE OF PRODUCTION PER 24 HOURS	Oil 1 bbls. Gas 0 MCF Water Gas-oil ratio CFPB
Disposition of gas (vented, used on lease or sold)	Producing interval (s)

INSTRUCTIONS: As provided in KCC Rule 82-2-125, within 90 days after completion of a well, one completed copy of this Drillers Log shall be transmitted to the State Geological Survey of Kansas, 4150 Monroe Street, Wichita, Kansas 67209. Copies of this form are available from the Conservation Division, State Corporation Commission, 3830 So. Meridian (P.O. Box 17027), Wichita, Kansas 66217. Phone AC 316-522-2206. If confidential custody is desired, please note Rule 82-2-125. Drillers Logs will be on open file in the Oil and Gas Division, State Geological Survey of Kansas, Lawrence, Kansas 66044.

Operator: Reese Enterprises, Inc. DESIGNATE TYPE OF COMP.: OIL, GAS, DRY HOLE, SWDW, ETC.: Oil

Well No. 11-79 Lease Name Schendel

s 24 T 16 R 21 ^E ~~XX~~

WELL LOG

Show all important zones of porosity and contents thereof; cored intervals, and all drill-stem tests, including depth interval tested, cushion used, time tool open, flowing and shut-in pressures, and recoveries.

SHOW GEOLOGICAL MARKERS, LOGS RUN, OR OTHER DESCRIPTIVE INFORMATION.

FORMATION DESCRIPTION, CONTENTS, ETC.	TOP	BOTTOM	NAME	DEPTH
Soil and clay	0	10		
Lime	10	20		
Shale	20	28		
Lime	28	47		
Shale	47	76		
Lime	76	91		
Shale	91	180		
Lime	180	199		
Shale	199	230		
Lime	230	237		
Shale	237	272		
Lime	272	278		
Shale	278	301		
Lime	301	326		
Shale	326	337		
Lime	337	356		
Shale	356	360		
Lime	360	373		
Shale	373	537		
Lime	537	546		
Shale	546	575		
Lime	575	581		
Shale	581	598		
Lime	598	601		
Shale	601	607		
Lime	607	620		
Shale	620	629		
Lime	629	630		
Shale	630	642		
Lime	642	646		
Shale	646	651		
Sand Oil	651	659		
Sandy Shale	659	664		
Shale	664	671		

USE ADDITIONAL SHEETS, IF NECESSARY, TO COMPLETE WELL RECORD.

Date Received

Patty Richman
Signature

Boulleper
Title

8-23-79
Date