

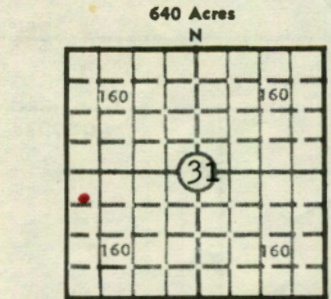
KANSAS

WELL COMPLETION REPORT AND DRILLER'S LOG

State Geological Survey WICHITA BRANCH

S. 31 T. 16S R. 22 E SW 1/4

County Miami



API No. 15 - 121 - 22,366
County Number

Operator Aegean Petroleum, Inc.

Address P. O. Box 24 Osawatome, Kansas 66064

Well No. A-1 Lease Name Hollinger

Footage Location 630 feet from (N) (SE line) 390 feet from (E) (W) line

Principal Contractor Carroll Bros. Drilling Geologist Jim Stegeman

Spud Date 12/16/80 Date Completed 12/17/80 Total Depth 764.8 P.B.T.D.

Directional Deviation - Oil and/or Gas Purchaser La Jet

CASING RECORD

RELEASED

Date: DEC 1 1982 FROM CONFIDENTIAL

Report of all strings set - surface, intermediate, production, etc.

Purpose of string	Size hole drilled	Size casing set (in O.D.)	Weight lbs/ft.	Setting depth	Type cement	Sacks	Type and percent additives
Production	6 1/4"	4 1/2"	10.5	762'	Portland A	120	Prem. Gel

LINER RECORD

PERFORATION RECORD

Top, ft.	Bottom, ft.	Sacks cement	Shots per ft.	Size & type	Depth interval
			21 Holes = 2per ft.	2 1/8" Alum Strip Jets	678-688
			15 Holes = 2per ft.	2 1/8" Alum Strip Jets	702-709
			21 Holes = 2per ft.	3 1/2" Alum. Strip Jets	678-688
			15 Holes = 2per ft.	3 1/2" Alum. Strip Jets	702-709

TUBING RECORD

Size	Setting depth	Packer set at

ACID, FRACTURE, SHOT, CEMENT SQUEEZE RECORD

Amount and kind of material used	Depth interval treated
15% HCL - 400 gal. (26 bbls)	679-693
A-200 Inhibitor - 1 gal., D-1 - 2 gal. frac sand 20/40 1000#, 10/20 5000#, 8/12 5000#, WG-1 100#, 8 gal. ea. CS-2A & D-1, 8# Breaker "F" (115 bbl wtr)	

INITIAL PRODUCTION

Date of first production 2-16-81	Producing method (flowing, pumping, gas lift, etc.) Pumping
RATE OF PRODUCTION PER 24 HOURS	Oil 2.87 bbls. Gas MCF 5.79 bbls. Water Gas-oil ratio CFPB
Disposition of gas (vented, used on lease or sold) Vented	Producing interval (s) Squirrel

INSTRUCTIONS: As provided in KCC Rule 82-2-125, within 90 days after completion of a well, one completed copy of this Drillers Log shall be trans-

Operator Aegean Petroleum, Inc. DESIGNATE TYPE OF COMP.: OIL, GAS, DRY HOLE, SWDW, ETC.:

Well No. A-1 Lease Name Hollinger Oil

S 31 T 16 R 22 E W

WELL LOG Show all important zones of porosity and contents thereof; cored intervals, and all drill-stem tests, including depth interval tested, cushion used, time tool open, flowing and shut-in pressures, and recoveries. SHOW GEOLOGICAL MARKERS, LOGS RUN, OR OTHER DESCRIPTIVE INFORMATION.

Table with 5 columns: FORMATION DESCRIPTION, CONTENTS, ETC., TOP, BOTTOM, NAME, DEPTH. Content: See Log of Adams Jetwell -

CONFIDENTIAL DEC 1 1985 RECEIVED

USE ADDITIONAL SHEETS, IF NECESSARY, TO COMPLETE WELL RECORD.

Date Received Signature Title Date

CONFIDENTIAL