

KANSAS

State Geological Survey
WICHITA BRANCH

AUG

WELL COMPLETION REPORT AND
DRILLER'S LOG

S. 31 T. 16S R. 22 E

Loc. SW¹/₄

County Miami

API No. 15 — 121 — 22,855
County Number

Operator
Aegean Petroleum, Inc.

Address
P. O. Box 24 Osawatomie, Kansas 66064

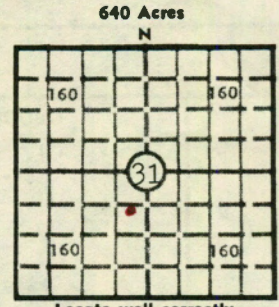
Well No. A-7 Lease Name Hollinger

Footage Location
740 feet from (N) line 300 feet from (E) line

Principal Contractor C & M Drilling, Inc. Geologist Jim Stegeman

Spud Date 5-15-81 Date Completed 5-20-81 Total Depth 750' P.B.T.D.

Directional Deviation - Oil and/or Gas Purchaser La Jet



CONFIDENTIAL

Released
DF KB

Date: JUN 4 1982
FROM CONFIDENTIAL

CASING RECORD

Report of all strings set — surface, intermediate, production, etc.

Purpose of string	Size hole drilled	Size casing set (in O.D.)	Weight lbs/ft.	Setting depth	Type cement	Sacks	Type and percent additives
Surface	8 1/2"	7"		21'	Portland A	96	4 sx 2% Prem. Gel
Production	6 1/4"	4 1/2"	10.5	737'			

LINER RECORD

PERFORATION RECORD

Top, ft.	Bottom, ft.	Sacks cement	Shots per ft.	Size & type	Depth interval
			8 Holes - 1 per foot	3 1/2" Alum. Strip Jets	669-675
Size	Setting depth	Packer set at			

ACID, FRACTURE, SHOT, CEMENT SQUEEZE RECORD

Amount and kind of material used	Depth interval treated
300 gal. 15% HCL, 1 gal. ea. D-4, SS-1, IS-1, I-1, ASA-1, 21 bbl	669-675
frac sand 20/40 1500#, 10/20 2000#, 8/12 5000#, WG-5 100#,	
Breaker "F" 8#, 100 bbl wtr.	

INITIAL PRODUCTION

Date of first production 6-10-81	Producing method (flowing, pumping, gas lift, etc.) Pumping
RATE OF PRODUCTION PER 24 HOURS	Oil 1.66 bbls. Gas MCF Water 2.70 bbls. Gas-oil ratio CFPB
Disposition of gas (vented, used on lease or sold) Vented	Producing interval(s) Squirrel

INSTRUCTIONS: As provided in KCC Rule 82-2-125, within 90 days after completion of a well, one completed copy of this Drillers Log shall be transmitted to the State Geological Survey of Kansas, 4150 Monroe Street, Wichita, Kansas 67209. Copies of this form are available from the Conservation Division, State Corporation Commission, 245 No. Water, Wichita, Kansas 67202. Phone AC 316-522-2206. If confidential custody is desired, please note Rule 82-2-125. Drillers Logs will be on open file in the Oil and Gas Division, State Geological Survey of Kansas, Lawrence, Kansas 66044.

Operator Aegean Petroleum, Inc.		DESIGNATE TYPE OF COMP.: OIL, GAS, DRY HOLE, SWDW, ETC.:
Well No. A-7	Lease Name Hollinger	Oil
S <u>31</u> T <u>16S</u> R <u>22</u> E W		

WELL LOG

Show all important zones of porosity and contents thereof; cored intervals, and all drill-stem tests, including depth interval tested, cushion used, time tool open, flowing and shut-in pressures, and recoveries.

SHOW GEOLOGICAL MARKERS, LOGS RUN, OR OTHER DESCRIPTIVE INFORMATION.

FORMATION DESCRIPTION, CONTENTS, ETC.	TOP	BOTTOM	NAME	DEPTH
Soil	0	4		
Sandy Lime	12	16		
Shale	5	21		
Lime	11	32		
Shale	14	46		
Lime	16	62		
Shale	22	84		
Lime	15	99		
Shale	100	199		
Lime	21	220		
Shale	33	253		
Lime	7	260		
Shale	19	279		
Lime	12	291		
Shale	16	307		
Lime	27	334		
Shale	6	340		
Lime	23	363		
Shale	4	367		
Lime	14	381		
Shale	102	483		
Sand	21	504		
Shale	43	547		
Lime	6	553		
Shale	7	560		
Lime	4	564		
Shale	21	585		
Lime	10	595		
Shale	14	609		
Lime	3	612		
Shale	5	617		
Shale & Lime Streaks	15	632		
Limey Shale	16	648		
Shale	7	655		
Lime	2	657		
Limey Shale	11	668		
Core	20	688		
Shale & Lime Streaks	12	700		
Shale	50	750 TD		

USE ADDITIONAL SHEETS, IF NECESSARY, TO COMPLETE WELL RECORD.

Date Received	<div style="color: red; font-size: 2em; opacity: 0.5; transform: rotate(-15deg); position: absolute; top: 50px; left: 50px;">CONFIDENTIAL</div> <hr style="border: 1px solid black;"/> <div style="text-align: right; margin-right: 50px;">Signature</div> <hr style="border: 1px solid black;"/> <div style="text-align: right; margin-right: 50px;">Title</div> <hr style="border: 1px solid black;"/> <div style="text-align: right; margin-right: 50px;">Date</div>
---------------	---