

OILFIELD RESEARCH LABORATORIES

536 NORTH HIGHLAND - CHANUTE, KANSAS - PHONE HE1-2650

October 2, 1967

Mr. W. M. Dary
Box 389
San Bernardino, California

Dear Sir:

Enclosed herewith are the results of tests run on the Rotary core taken from the Barkis Lease, Well No. W-6, Miami County, Kansas, and submitted to our laboratory on September 28, 1967.

This core is from a virgin territory and was sampled and the samples sealed in plastic bags by a representative of the client.

Your business is greatly appreciated.

Very truly yours,

OILFIELD RESEARCH LABORATORIES

Benjamin R. Pearman
Benjamin R. Pearman

BRP:bjc

2 c. - San Bernardino, California
3 c. - Garnett, Kansas



22-16-24E

Barkis W-6

Oilfield Research Laboratories

RESULTS OF SATURATION & PERMEABILITY TESTS

TABLE 1-B

Company W. M. Dary Lease Barkis Well No. W-6

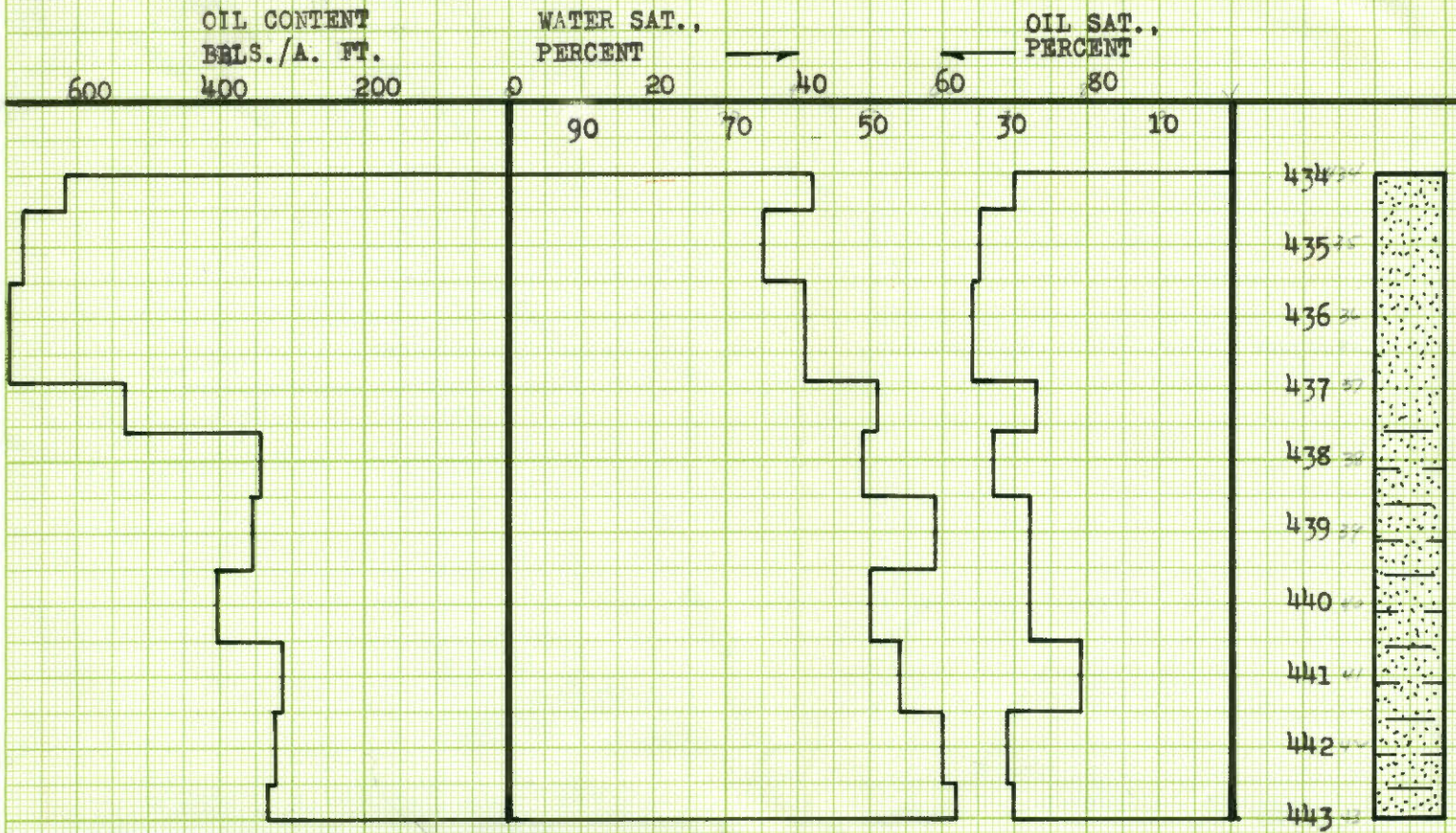
Sample No.	Depth, Feet	Effective Porosity Percent	Percent Saturation			Oil Content Bbbs. / A Ft.	Perm., Mill.	Feet of Sand		Total Oil Content	Perm. Capacity Ft. X md.
			Oil	Water	Total			Ft.	Cum. Ft.		
1	434.1	26.6	30	42	72	619	158.	0.5	0.5	310	79.00
2	435.0	25.0	35	35	70	679	181.	1.0	1.5	679	181.00
3	436.0	25.0	36	41	77	698	207.	1.4	2.9	976	289.80
4	437.0	25.4	27	51	78	532	209.	0.7	3.6	373	146.30
5	438.0	13.5	33	49	82	346	2.7	0.9	4.5	312	2.43
6	439.0	16.3	28	59	87	354	5.1	1.0	5.5	354	5.10
7	440.0	18.7	28	50	78	406	6.8	1.0	6.5	406	6.80
8	441.0	19.3	21	54	75	314	2.6	1.0	7.5	314	2.60
9	442.0	13.5	31	60	91	325	3.2	1.0	8.5	325	3.20
10	442.9	14.4	30	62	92	335	1.1	0.5	9.0	168	0.55

Oilfield Research Laboratories

SUMMARY OF PERMEABILITY & SATURATION TESTS

TABLE III

Company	W. M. Dary	Lease	Barkis	Well No.	W-6	
	Depth Interval, Feet	Fest of Core Analyzed	Average Permeability, Millidarcys	Permeability Capacity Ft. x Md.		
	434.0 - 437.6	3.6	193.8	696.10		
	437.6 - 443.0	5.4	3.8	20.68		
	434.0 - 443.0	9.0	79.6	716.78		
	Depth Interval, Feet	Fest of Core Analyzed	Average Percent Oil Saturation	Average Percent Water Saturation	Average Oil Content Bbl./A. Ft.	Total Oil Content Bbl./Acre
	434.0 - 437.6	3.6	33.2	41.5	649	2,338
	437.6 - 443.0	5.4	28.2	55.3	348	1,879
	434.0 - 443.0	9.0	30.2	49.8	469	4,217



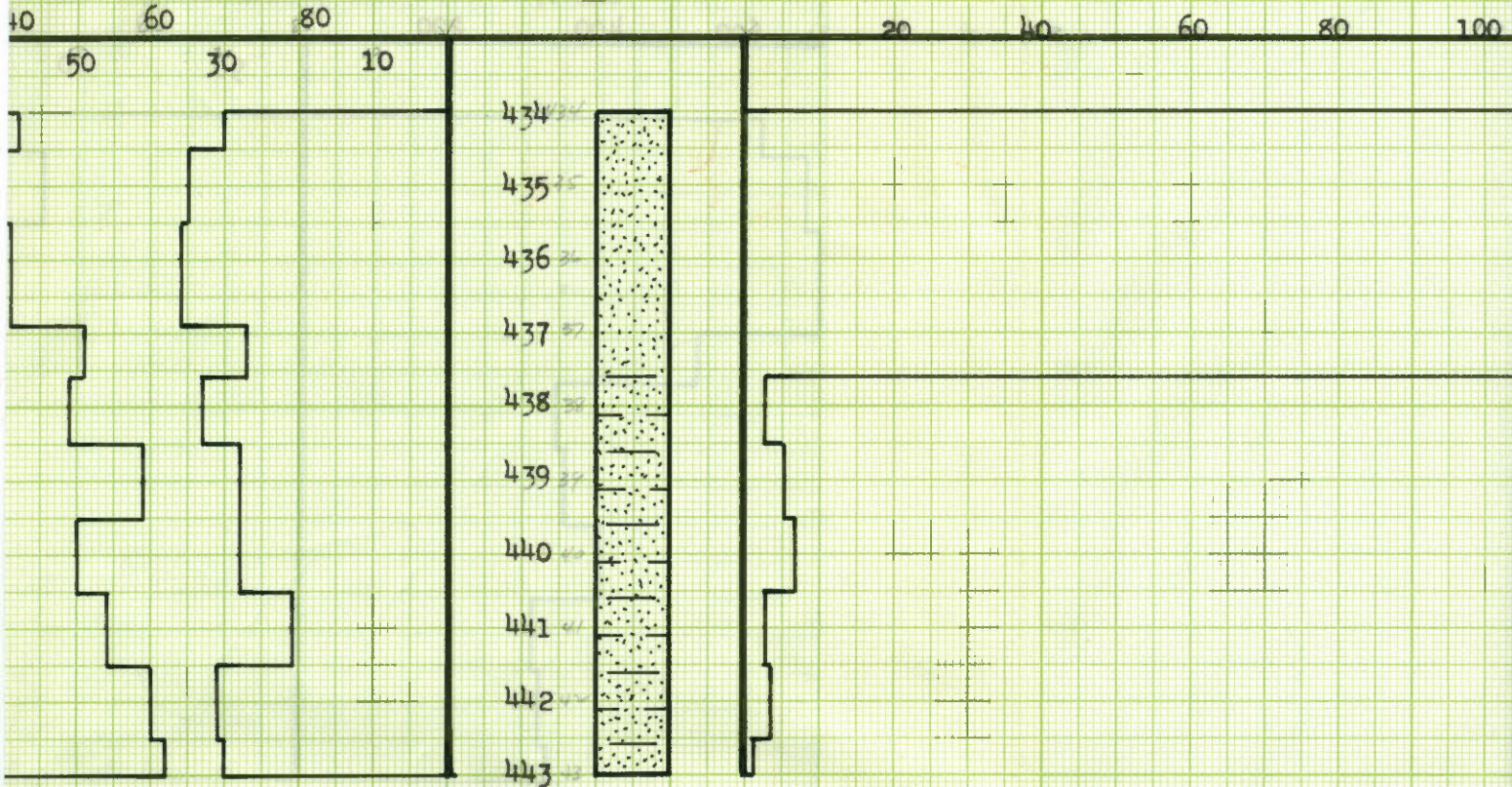
SANDSTONE

W
BARK
ML

DEPTH INTERVAL FEET	FEET OF CORE ANALYZED	AVERAGE POROSITY PERCENT	AVG. SATUR PERC
434.0 - 437.6	3.6	25.4	33
437.6 - 443.0	5.4	16.2	28
434.0 - 443.0	9.0	19.8	30

OIL SAT.,
PERCENT

AIR PER



 SANDSTONE

W. M. DARY

BARKIS LEASE WELL W-6
MIAMI COUNTY, KANSAS

DEPTH INTERVAL FEET	FEET OF CORE ANALYZED	AVERAGE POROSITY PERCENT	AVG. OIL SATURATION PERCENT	AVG. WATER SATURATION PERCENT	AVG. OIL CONTENT BBLs./A. FT.	TOTAL OIL CONTENT BBLs./ACRE
4.0 - 437.6	3.6	25.4	33.2	41.5	649	2,338
7.6 - 443.0	5.4	16.2	28.2	55.3	348	1,879
4.0 - 443.0	9.0	19.8	30.2	49.8	469	4,217

AIR PERMEABILITY, MILLIDARCYS

100 120 140 160 180 200 220 240 260



 SEALY SANDSTONE

WELL OIL IDENT /ACRE	AVG. AIR PERMEABILITY MILLIDARCYS
----------------------------	-----------------------------------------

38	193.8
----	-------

79	3.8
----	-----

17	79.6
----	------

OILFIELD RESEARCH LABORATORIES
 CHANUTE, KANSAS
 OCTOBER, 1967