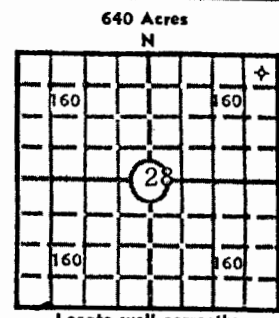


15-127-20146
28 T. 16 R. 5 E
XWXX

Loc. 100'S NE NE NE
County Morris



640 Acres
N
Locate well correctly
Elev.: Gr. 1494
DF _____ KB 1504

API No. 15 — 127 — 20,146
County Number

Operator
Mack Oil Company

Address
908 Union Center Bldg. Wichita, Kansas

Well No. 1 Lease Name Monnich

Footage Location
430 feet from (N) (S) line 330 feet from (E) (W) line

Principal Contractor Kan Go, Inc. Geologist L Earl Moore

Spud Date 5-16-77 Total Depth 2650 P.B.T.D. _____

Date Completed 5-21-77 Oil Purchaser _____

CASING RECORD

Report of all strings set— surface, intermediot, production, etc.

| Purpose of string | Size hole drilled | Size casing set (in O.D.) | Weight lbs/ft. | Setting depth | Type cement | Sacks | Type and percent additives |
|-------------------|-------------------|---------------------------|----------------|---------------|-------------|-------|----------------------------|
| Surface | 12 1/4 | 8 5/8 | | 215 K.B. | Class A | 150 | 4% cacl |
| | | | | | | | |
| | | | | | | | |
| | | | | | | | |

LINER RECORD

PERFORATION RECORD

| Top, ft. | Bottom, ft. | Sacks cement | Shots per ft. | Size & type | Depth interval |
|----------|-------------|--------------|---------------|-------------|----------------|
| | | | | | |
| | | | | | |

TUBING RECORD

| Size | Setting depth | Packer set at |
|------|---------------|---------------|
| | | |

ACID, FRACTURE, SHOT, CEMENT SQUEEZE RECORD

| Amount and kind of material used | Depth interval treated |
|----------------------------------|------------------------|
| | |
| | |

INITIAL PRODUCTION

Date of first production _____ Producing method (flowing, pumping, gas lift, etc.) _____

| RATE OF PRODUCTION PER 24 HOURS | Oil | Gas | Water | Gas-oil ratio |
|---------------------------------|-------|-----|-------|---------------|
| | bbls. | MCF | bbls. | CFPB |

Disposition of gas (vented, used on lease or sold) _____ Producing interval (s) D & A

INSTRUCTIONS: As provided in KCC Rule 82-2-125, within 90 days after completion of a well, one completed copy of this Drillers Log shall be transmitted to the State Geological Survey of Kansas, 4150 Monroe Street, Wichita, Kansas 67209. Copies of this form are available from the Conservation Division, State Corporation Commission, 3830 So. Meridian (P.O. Box 17027), Wichita, Kansas 66217. Phone AC 316-522-2206. If confidential custody is desired, please note Rule 82-2-125. Drillers Logs will be on open file in the Oil and Gas Division, State Geological Survey of Kansas, Lawrence, Kansas 66044.

ator

Mack Oil Company

DESIGNATE TYPE OF COMP.: OIL, GAS, DRY HOLE, SWDW, ETC.:

dry hole

28-16-SE

Well No.

1

Lease Name

Monnich

S 28 T 16 R 5 E WX

WELL LOG

Show all important zones of porosity and contents thereof; cored intervals, and all drill-stem tests, including depth interval tested, cushion used, time tool open, flowing and shut-in pressures, and recoveries.

SHOW GEOLOGICAL MARKERS, LOGS RUN, OR OTHER DESCRIPTIVE INFORMATION.

| FORMATION DESCRIPTION, CONTENTS, ETC. | TOP | BOTTOM | NAME | DEPTH |
|---------------------------------------|------|--------|----------------------|------------------------------|
| B KC | | 2100 | CDL IEL | 650' -2646' 210' -2642' |
| Mississippi Chat | 2304 | 2360 | Heebner Lansing | 1582 (- 78) 1766 (- 262) |
| Mississippi Lime | 2360 | 2414 | B/KC Mississippi | 2091 (- 587) 2304 (- 800) |
| Kinderhook | 2414 | 2599 | Kinderhook Hunton | 2413 (- 909) 2600 (-1096) |
| Hunton | 2599 | | Sylvan | 2644 (-1140) |
| RTD | 2650 | | | |

DST #1 2280-2365 30"-45"-60"-60"
Rec. 450' WM & 960' SW
BHP's 570-570 FP's 355-570

USE ADDITIONAL SHEETS, IF NECESSARY, TO COMPLETE WELL RECORD.

Date Received

Frank A. Sage

Signature

GEOLOGIST

Title

5-29-77

Date