

ROY CORPORATION  
BOULEVARD  
MIAMI COUNTY, KANSAS 66733  
EVE

CORE ANALYSIS REPORT  
FOR  
TRIPLE I ENERGY CORPORATION  
GOOD NO. 32-W WELL  
MIAMI COUNTY, KANSAS

CORE ANAL  
GOOD NO.  
MIAMI COU



SEPTEMBER 6, 1983

TRIPLE I ENERGY CORPORATION  
6600 COLLEGE BOULEVARD  
SUITE 310  
OVERLAND PARK, KANSAS 66211

ATTN: MR. STEVE ALLEE

SUBJECT: CORE ANALYSIS DATA  
GOOD NO. 32-W WELL  
MIAMI COUNTY, KANSAS  
CLI FILE NO. 3406-02478

GENTLEMEN:

DIAMOND CORES WERE TAKEN IN THE SUBJECT WELL AND LATER TRANSPORTED TO OUR CHANUTE LABORATORY FOR ANALYTICAL PURPOSE. THE MEASURED DATA FOLLOWS ON THE ACCOMPANYING PAGES OF THIS REPORT.

THE ACCOMPANYING COREGRAPH PRESENTS THE SURFACE CORE GAMMA LOG AND BINOMIALLY AVERAGED CORE ANALYSIS DATA IN GRAPHICAL FORM TO AID CORRELATION WITH DOWNHOLE ELECTRICAL SURVEYS.

PRODUCTIVITY INDICATED FROM THE RESIDUAL FLUID SATURATION DATA IN THE INTERVAL ANALYZED BETWEEN 266 AND 273 FEET AND ALSO 414 AND 427 FEET WOULD LIKELY BE OIL AFTER FORMATION TREATMENT.

ZONAL AVERAGES ALONG WITH ESTIMATES OF RECOVERABLE OIL (WHERE APPLICABLE) ARE PRESENTED ON THE CORE SUMMARY PAGE OF THIS REPORT.

SECONDARY RECOVERY FROM A PRUDENT WATER FLOOD PROGRAM MAY APPROXIMATE PRIMARY RECOVERY BARRELS PER ACRE FOOT.

WE APPRECIATE THIS OPPORTUNITY OF SERVING YOU.

VERY TRULY YOURS

CORE LABORATORIES, INC.

*J. Michael Edwards/REP*  
J. MICHAEL EDWARDS  
DISTRICT MANAGER

5 CC - ADDRESSEE

**CORE LABORATORIES, INC.**  
*Petroleum Reservoir Engineering*  
 DALLAS, TEXAS

TRIPLE I ENERGY CORPORATION  
 GOOD NO. 32-W WELL  
 LOUISBURG FIELD  
 MIAMI COUNTY, KANSAS

DATE: 9/06/83  
 FORMATION: KNOBTOWN/WEISER  
 DRLG. FLUID: AIR/SALT WATER MIST  
 LOCATION: 2310'NSL 1320'EWL; SW 1/4; SEC. 11-17S-24E

FILE NO: 3406-02478  
 ENGINEER: PRITCHARD  
 ELEVATION: 1006.0 FT.

SMP. NO.	DEPTH	STB/ AC. FT.	PERM. TO AIR MD. PLUG	POROSITY PERCENT	FLUID OIL	SATS. WTR.	GR. DEN.	DESCRIPTION
CONVENTIONAL PLUG ANALYSIS								
1	266.0-67.0	1354.0	151.0	26.2	43.4	30.6		SD, LIG, PYR, LMY, MIC
2	267.0-68.0	1283.0	204.0	26.3	43.1	34.6		SD, PYR, LMY, MIC
3	268.0-69.0	1222.0	113.0	25.6	30.9	36.1		SD, PYR, LMY, MIC
4	269.0-70.0	1116.0	108.0	25.7	28.2	41.9		SD, SHY, PYR, LMY, MIC
5	270.0-71.0	1110.0	112.0	25.5	32.1	41.6		SD, SHY, PYR, LMY, MIC
6	271.0-72.0	1119.0	50.0	26.7	30.6	43.8		SD, GIL, PYR, CAL, MIC
7	272.0-72.5	1004.0	108.0	25.0	32.0	46.2		SD, GIL, PYR, CAL, MIC
	272.5-80.7							SHALE
	280.7-08.0							DRILLED
	408.0-14.0							SHALE
8	414.0-15.0	1289.0	110.0	25.2	32.4	31.5		SD, SHY, LIG, LMY, MIC
9	415.0-16.0	1156.0	54.0	23.7	36.5	34.6		SD, SHY, LMY, MIC
10	416.0-17.0	1085.0	29.0	23.7	32.1	38.7		SD, SHY, PYR, LMY, MIC
11	417.0-18.0	742.0	5.0	15.9	35.9	37.5		SD, LMY, SHY, PYR, MIC
12	418.0-19.0	517.0	2.2	10.0	38.6	30.9		SD, LMY, SHY, PYR, MIC
13	419.0-20.0	1029.0	37.0	23.0	35.1	39.9		SD, SHY, LMY, MIC
14	420.0-20.5	547.0	2.0	11.4	39.9	35.4		SD, LMY, SHY, PYR, MIC
	420.5-22.4							LIME
15	422.4-23.0	585.0	0.1	11.5	40.7	31.7		SD, LMY, SHY, PYR, MIC
16	423.0-24.0	927.0	3.7	19.6	40.1	36.7		SD, LMY, SHY, PYR, MIC
17	424.0-25.0	1130.0	4.8	22.3	44.5	32.1		SD, SLTY, SHY, PYR, LMY
18	425.0-26.0	956.0	15.0	20.5	37.5	37.5		SD, SLTY, SHY, PYR, LMY
19	426.0-27.0	1113.0	17.0	22.1	43.8	32.4		SD, SLTY, SHY, PYR, LMY

Company TRIPLE I ENERGY CORPORATION

Page 3

Well GOOD NO. 32-W

CLI File 3406-02478

**CORE SUMMARY AND CALCULATED RECOVERABLE OIL**

FORMATION NAME	KNOBTOWN				
DEPTH INTERVAL	266 - 273				
FEET OF CORE RECOVERED FROM ABOVE INTERVAL	7				
FEET OF CORE INCLUDED IN AVERAGES	7				
AVERAGE PERMEABILITY: MILLIDARCYS	121				
PRODUCTIVE CAPACITY: MILLIDARCY-FEET	847				
AVERAGE POROSITY: PER CENT	25.9				
AVERAGE RESIDUAL OIL SATURATION: PER CENT OF PORE SPACE	34.3				
AVERAGE TOTAL WATER SATURATION: PER CENT OF PORE SPACE	39.3				
AVERAGE CONNATE WATER SATURATION: PER CENT OF PORE SPACE	(e) 37.0				
OIL GRAVITY: °API					
ORIGINAL SOLUTION GAS-OIL RATIO: CUBIC FEET PER BARREL					
ORIGINAL FORMATION VOLUME FACTOR: BARRELS SATURATED OIL PER BARREL STOCK-TANK OIL	1.03				
CALCULATED ORIGINAL STOCK-TANK OIL IN PLACE: BARRELS PER ACRE-FOOT	1229				

Calculated maximum solution gas drive recovery is 123 barrels per acre-foot, assuming production could be continued until reservoir pressure declined to zero psig. These recovery estimates represent theoretical maximum values for solution gas drive and do not take into account any prior production or drainage to other areas. The difference between the calculated stock-tank oil in place and the solution gas drive recovery estimates, which are barrels per acre-foot, represent that portion of the reservoir oil which is available for possible secondary recovery techniques. Estimates of additional recoverable oil by secondary or enhanced methods would necessitate a complete engineering study of the subject reservoir.

(c) calculated

(e) estimated

(m) measured

Company TRIPLE I ENERGY CORPORATION

Page 4

Well GOOD NO. 32-W

CLI File 3406-02478

**CORE SUMMARY AND CALCULATED RECOVERABLE OIL**

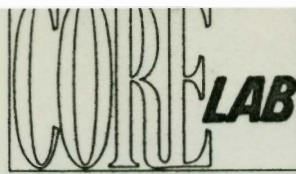
FORMATION NAME	WEISER			
DEPTH INTERVAL	414 - 427			
FEET OF CORE RECOVERED FROM ABOVE INTERVAL	13			
FEET OF CORE INCLUDED IN AVERAGES	12			
AVERAGE PERMEABILITY: MILLIDARCS	23			
PRODUCTIVE CAPACITY: MILLIDARCY-FeET	276			
AVERAGE POROSITY: PER CENT	19.1			
AVERAGE RESIDUAL OIL SATURATION: PER CENT OF PORE SPACE	38.1			
AVERAGE TOTAL WATER SATURATION: PER CENT OF PORE SPACE	34.9			
AVERAGE CONNATE WATER SATURATION: PER CENT OF PORE SPACE (e)	33.0			
OIL GRAVITY: °API				
ORIGINAL SOLUTION GAS-OIL RATIO: CUBIC FEET PER BARREL				
ORIGINAL FORMATION VOLUME FACTOR: BARRELS SATURATED OIL PER BARREL STOCK-TANK OIL	1.04			
CALCULATED ORIGINAL STOCK-TANK OIL IN PLACE: BARRELS PER ACRE-FOOT	955			

Calculated maximum solution gas drive recovery is 96 barrels per acre-foot, assuming production could be continued until reservoir pressure declined to zero psig. These recovery estimates represent theoretical maximum values for solution gas drive and do not take into account any prior production or drainage to other areas. The difference between the calculated stock-tank oil in place and the solution gas drive recovery estimates, which are barrels per acre-foot, represent that portion of the reservoir oil which is available for possible secondary recovery techniques. Estimates of additional recoverable oil by secondary or enhanced methods would necessitate a complete engineering study of the subject reservoir.

(c) calculated

(e) estimated

(m) measured



ANY TRIPLE I ENERGY CORPORATION FILE NO. 3406-02478  
 GOOD NO. 32-W DATE 9/6/83  
 LOUISBURG FORMATION KNOB TOWN ELEV. 1006.0  
 MIAMI STATE KANSAS DRLG. FLD. AIR/SALT WATER MIST CORES  
 ION 2310'NSL 1320'EWL; SW 1/4; SEC. 11-17S-24E

# CORRELATION COREGRAPH

These analyses, opinions or interpretations are based on observations and material supplied by the client to whom, and for whose exclusive and confidential use, this report is made. The interpretations or opinions expressed represent the best judgment of Core Laboratories, Inc., (all errors or omissions excepted); but Core Laboratories, Inc., and its officers and employees, assume no responsibility and make no warranty or representations as to the productivity, proper operation, or profitability of any oil, gas or other mineral well or sand in connection with which such report is used or relied upon.

VERTICAL SCALE: 5" = 100'

Best Scanned Copy

Total Water \_\_\_\_\_  
 PERCENT PORE SPACE  
 100 80 60 40 20 0

**Gamma Ray**

**Permeability** \_\_\_\_\_

**Porosity** \_\_\_\_\_

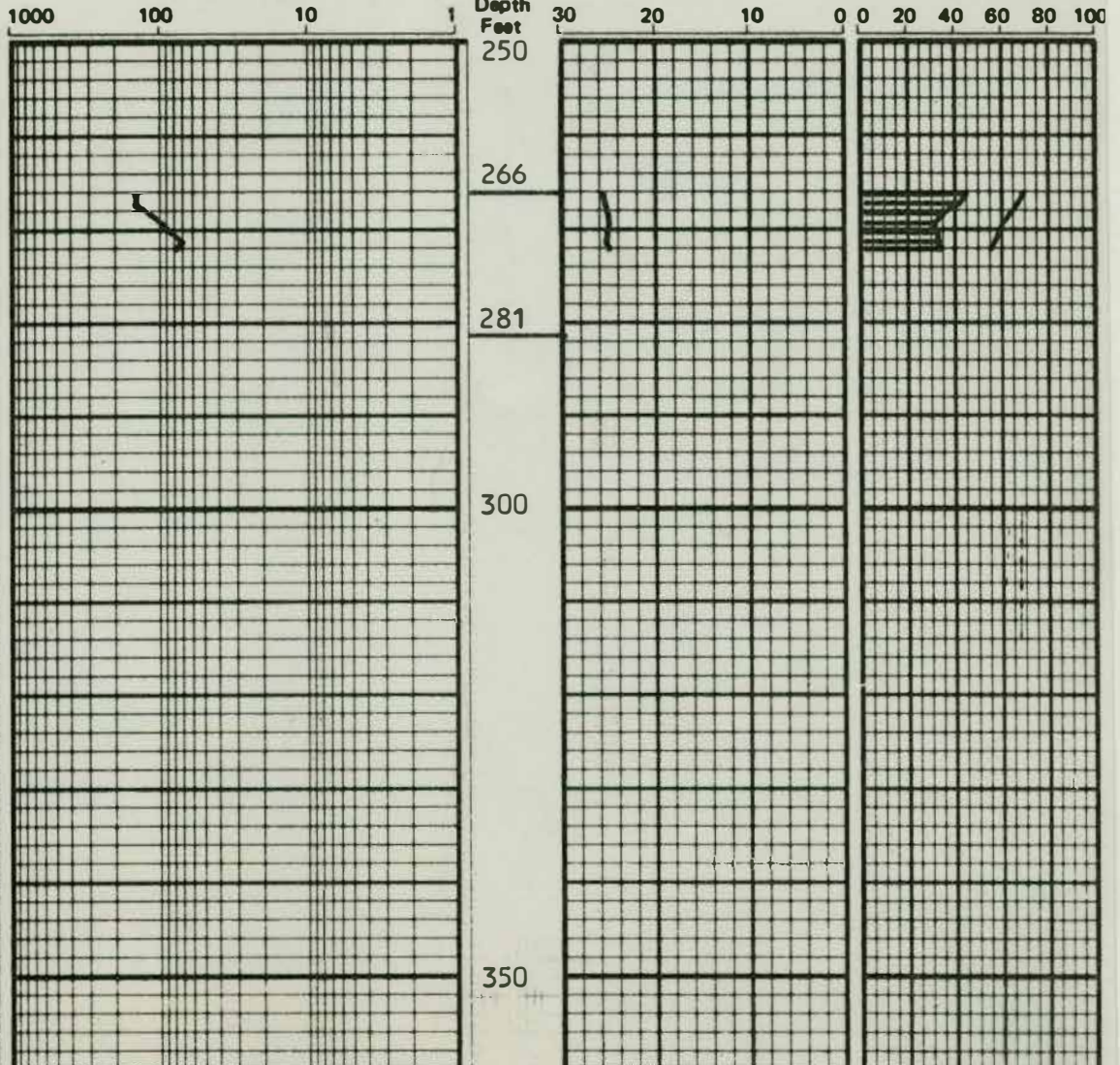
**Oil Saturation** \_\_\_\_\_

RADIATION INCREASE →

MILLIDARCIES

PERCENT

PERCENT PORE SPACE





**CORE LABORATORIES, INC.**

*Petroleum Reservoir Engineering*

BY TRIPLE I ENERGY CORPORATION FILE NO. 3406-02478  
 GOOD NO. 32-W DATE 9/6/83  
 LOUISBURG FORMATION WEISER ELEV. 1006.0  
 MIAMI STATE KANSAS DRLG. FLD. AIR/SALT WATER MIST CORES \_\_\_\_\_  
 ON 2310'NSL 1320'EWL' SW 1/4; SEC. 11-17S-24E

# CORRELATION COREGRAPH

These analyses, opinions or interpretations are based on observations and material supplied by the client to whom, and for whose exclusive and confidential use, this report is made. The interpretations or opinions expressed represent the best judgment of Core Laboratories, Inc., (all errors or omissions excepted); but Core Laboratories, Inc., and its officers and employees, assume no responsibility and make no warranty or representations as to the productivity, proper operation, or profitability of any oil, gas or other mineral well or sand in connection with which such report is used or relied upon.

VERTICAL SCALE: 5" = 100'

Best Scanned Copy

Total Water \_\_\_\_\_  
 PERCENT PORE SPACE  
 100 80 60 40 20 0

Gamma Ray  
 RADIATION INCREASE →

Permeability \_\_\_\_\_  
 MILLIDARCIES

Porosity \_\_\_\_\_  
 PERCENT

Oil Saturation \_\_\_\_\_  
 PERCENT PORE SPACE

