

OILFIELD RESEARCH LABORATORIES

536 NORTH HIGHLAND - CHANUTE, KANSAS 66720 - PHONE (316) 431-2650

August 24, 1981

Emery Energy, Inc.
P. O. Box 519
Osawatomie, Kansas 66064

Gentlemen:

Enclosed herewith are the results of tests run on the rotary core taken from the Cahal Lease, Well No. C-1, located in Miami County, Kansas.

The core was sampled by a representative of Oilfield Research Laboratories and was received in our laboratory on August 19, 1981.

Your business is greatly appreciated.

Very truly yours,

OILFIELD RESEARCH LABORATORIES

Sanford A. Michel

SAM/kas

5 c to Osawatomie, Kansas

T17S, R25E, Sec 17

- REGISTERED ENGINEERS -

CORE ANALYSIS - WATER ANALYSIS - REPRESSURING ENGINEERING - SURVEYING & MAPPING - PROPERTY EVALUATION & OPERATION

Oilfield Research Laboratories
GENERAL INFORMATION & SUMMARY

Company Emery Energy, Inc. Lease Cahal Well No. C-1

Location _____

Section _____ Twp. _____ Rge. _____ County Miami State Kansas

Elevation, Feet

Name of Sand.....

Squirrel

Top of Core

327.0

Bottom of Core

330.0

Top of Sand

327.0

Bottom of Sand

330.0

Total Feet of Permeable Sand

0.3

Distribution of Permeable Sand:
Permeability Range
Millidarcys

Feet

Cum. Ft.

30 - 35

0.3

0.3

Average Permeability Millidarcys

32.0

Average Percent Porosity

15.6

Average Percent Oil Saturation

19.9

Average Percent Water Saturation.....

65.6

Average Oil Content, Bbls./A. Ft.....

242.

Total Oil Content, Bbls./Acre.....

725.

OILFIELD RESEARCH LABORATORIES

LOG

Name Emery Energy, Inc. Lease Cahal Well No. C-1

<u>Depth Interval, Feet</u>	<u>Description</u>
327.0 - 328.3	Grayish brown shaly sandstone.
328.3 - 328.6	Gray and brown laminated shale and sandstone.
328.6 - 330.0	Grayish brown shaly sandstone.

Oilfield Research Laboratories

SUMMARY OF PERMEABILITY & SATURATION TESTS

TABLE III

Company	Lease	Well No.	
Emery Energy, Inc.	Cahal	C-1	
			Permeability Capacity Ft. x Md.
Depth Interval, Feet	Feet of Core Analyzed	Average Permeability, Millidarcys	Permeability Capacity Ft. x Md.
327.0 - 330.0	0.3	32.0	9.60
			Average Percent Oil Saturation
Depth Interval, Feet	Feet of Core Analyzed	Average Percent Water Saturation	Average Oil Content Bbl./A. Ft.
327.0 - 330.0	3.0	15.6	19.9
			Total Oil Content Bbls./Acre
		65.6	242
		725	

Oilfield Research Laboratories

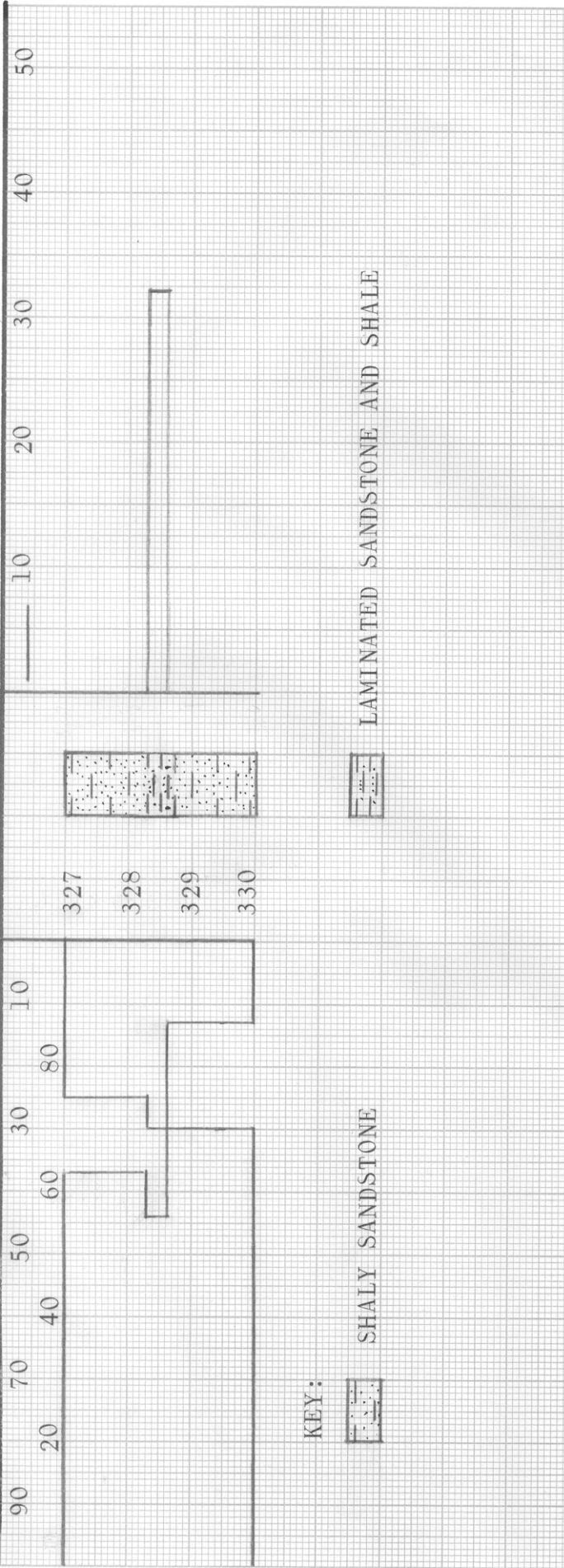
RESULTS OF SATURATION & PERMEABILITY TESTS

TABLE 1-B

Company Emery Energy, Inc. Lease Cahal Well No. C-1

Sample No.	Depth, Feet	Effective Porosity Percent	Percent Saturation			Oil Content Bbls. / A Ft.	Perm., Mill.	Feet of Sand		Total Oil Content	Perm. Capacity Ft. X md.
			Oil	Water	Total			Ft.	Cum. Ft.		
1	327.4	14.9	25	63	88	289	Imp.	1.3	1.3	376	0.00
2	328.4	18.1	30	56	86	421	32.	0.3	1.6	126	9.60
3	329.5	15.8	13	70	83	159	Imp.	1.4	3.0	223	0.00

WATER SAT., PERCENT → OIL SAT., PERCENT ←



EMERY ENERGY, INC.

CAHAL LEASE
MIAMI COUNTY, KANSAS
WELL NO. C-1

DEPTH INTERVAL, FEET	FEET OF CORE ANALYZED	AVERAGE POROSITY PERCENT	AVG. OIL SATURATION PERCENT	AVG. WATER SATURATION PERCENT	AVERAGE PERMEABILITY, MILLIDARCYs
327.0 - 330.0	3.0	15.6	19.9	65.6	32.0

OILFIELD RESEARCH LABORATORIES
CHANNUTE, KANSAS
AUGUST, 1981
PDC