



CORE ANALYSIS REPORT

FOR

R. J. WALKER OIL COMPANY, INC.
PAUL DUDECK NO. 1-10 WELL
MARION COUNTY, KANSAS

CORE LABORATORIES, INC.
Petroleum Reservoir Engineering
OKLAHOMA CITY, OKLAHOMA

October 28, 1982

REPLY TO
SUITE 133
400 SOUTH VERMONT
OKLAHOMA CITY, OK
73108

R. J. Walker Oil Company, Inc.
150 Four Corporate Plaza
3524 N. W. 56th Place
Oklahoma City, Oklahoma 73112

Attn: Mr. Brent Salgat

Subject: Core Analysis Data
Paul Dudeck No. 1-10 Well
Marion County, Kansas
CLI File 3402-11453

Gentlemen:

Cores taken in the subject well in the Simpson Sand formation were received at the Oklahoma City laboratory for special analytical testing described on the Procedure Page.

The accompanying Coregraph presents the Surface Core-Gamma Log and binomially averaged core analysis data in graphical form to aid correlation with downhole electrical surveys.

Tabular presentation of the measured physical properties may be found on pages one through three of this report.

Histograms of porosity and permeability in addition to a graph of permeability versus porosity may be found on pages four and five.

It is a pleasure to have this opportunity of serving you.

Very truly yours,

CORE LABORATORIES, INC.



J. Michael Edwards
District Manager

15 cc - Addressee

R. J. Walker Oil Company, Inc.
Paul Dudeck No. 1-10 Well
CLI File 3402-11453

Procedure Page

Handling and Analytical Procedures.

Diamond coring equipment and water base mud were used to obtain 3.5 inch diameter cores between 3,190.0 and 3,250.0 feet.

The cores were preserved at the well site in a CO2 atmosphere by CLI personnel.

The cores were transported to Oklahoma City by CLI personnel.

A Core-Gamma Log was recorded for downhole electric log correlation.

Plug analysis was made in intervals requested.

Fluid removal was accomplished using Dean Stark extraction.

Porosity was determined by Boyle's law grain volume--mercury pump bulk volume.

Horizontal and vertical air permeability measured on plugs without Klinkenberg correction.

Cores were slabbed for future geological study.

Color photos of the slab were made for future reference.

Slab segments have been shipped to:

One set to R. J. Walker Oil Company, Inc.
3524 N. W. 56th Place
Oklahoma City, Oklahoma 73112
One set to Kansas Geological Survey
1930 Avenue A, Campus West
Lawrence, Kansas 66044

Temporary storage of cores in Oklahoma City laboratory for a period of thirty days without additional charge.

R. J. WALKER OIL COMPANY, INC. DATE: 10-27-82 FILE NO: 3402-11453
 PAUL DUDECK NO. 1-10 WELL FORMATION: SIMPSON SAND ANALYST: EDWARDS
 MARION COUNTY, KANSAS DRG. FLUID: WATER BASE MUD LABORATORY: OKLAHOMA CITY
 LOCATION: NE SW NE SEC. 10-18S-1E

DEAN STARK PLUG ANALYSIS

SMP. NO.	DEPTH FEET	PLUG H	PERM. TO AIR MD.	PLUG V	POROSITY PERCENT	FLUID OIL	FLUID WATER	SATS. WATER	GRAIN DEN.	DESCRIPTION
1	3190.0-91.0	<0.01	<0.01	<0.01	0.3	7.7	62.5	2.66	LM, SL/ARG, SHY	
2	3191.0-92.0	<0.01	<0.01	<0.01	2.7	51.2	40.3	2.51	LM, ARG, SHY	
3	3192.0-93.0	0.10	<0.01	<0.01	1.2	8.1	69.0	2.64	LM, SL/ARG, SHY	
4	3193.0-94.0	<0.01	<0.01	<0.01	0.5	1.3	77.8	2.67	LM, SL/ARG	
5	3194.0-95.0	<0.01	<0.01	<0.01	16.0	9.9	69.9	2.82	LM, PYR, SHY	
6	3195.0-96.0	0.23	0.14	0.14	7.9	22.2	61.1	2.66	SD, SLTY, SL/LMY	
7	3196.0-97.0	0.10	0.01	0.01	12.0	12.4	72.5	2.83	DOL, PP VGS, CALC, SH LAMS	
8	3197.0-98.0	<0.01	<0.01	<0.01	10.4	1.9	79.8	2.84	DOL, PP VGS	
9	3198.0-99.0	0.03	0.03	0.02	12.0	6.8	81.1	2.84	DOL, PP VGS, CALC	
10	3199.0-0.0	0.05	0.05	0.02	10.4	7.4	78.3	2.83	DOL, PP VGS, SH LAMS	
11	3200.0-1.0	0.05	0.05	<0.01	10.9	6.6	78.4	2.83	DOL, PP VGS	
12	3201.0-2.0	0.02	0.02	0.01	10.1	8.7	76.6	2.84	DOL, PP VGS	
13	3202.0-3.0	<0.01	<0.01	<0.01	9.7	6.3	76.2	2.83	DOL, PP VGS	
14	3203.0-4.0	56	54	54	9.8	42.4	34.7	2.66	SD	
15	3204.0-5.0	62	35	35	9.1	51.0	33.8	2.66	SD	
16	3205.0-6.0	377	315	315	17.5	35.2	47.5	2.66	SD	
17	3206.0-7.0	362	361	361	18.8	37.3	49.0	2.66	SD	
18	3207.0-8.0	534	228	228	18.2	37.8	42.0	2.66	SD	
19	3208.0-9.0	448	343	343	17.9	33.9	44.1	2.66	SD	
20	3209.0-10.0	353	342	342	17.1	33.7	48.3	2.66	SD	
21	3210.0-11.0	273	221	221	15.4	41.2	42.7	2.66	SD	
22	3211.0-12.0	3.90	3.70	3.70	4.9	36.1	43.0	2.66	SD, SLTY	
23	3212.0-13.0	0.03	0.02	0.02	11.2	17.9	76.6	2.65	SD, SLTY, SHY	
24	3213.0-14.0	2.90	0.02	0.02	9.1	14.9	80.8	2.67	SD, SLTY, SHY	
25	3214.0-15.0	<0.01	<0.01	<0.01	8.3	46.6	47.9	2.40	SH, ARG	
26	3215.0-16.0	<0.01	<0.01	<0.01	9.5	50.0	36.1	2.41	SH, ARG	

These analyses, opinions or interpretations are based on observations and materials supplied by the client to whom, and for whose exclusive and confidential use, this report is made. The interpretations or opinions expressed represent the best judgment of Core Laboratories, Inc. (all errors and omissions excepted); but Core Laboratories, Inc. and its officers and employees, assume no responsibility and make no warranty or representations, as to the productivity, proper operations, or profitability of any oil, gas or other mineral well or sand in connection with which such report is used or relied upon.

R. J. WALKER OIL COMPANY, INC. DATE: 10-27-82
 PAUL DUDECK NO. 1-10 WELL FORMATION: SIMPSON SAND

FILE NO: 3402-11453
 ANALYST: EDWARDS

DEAN STARK PLUG ANALYSIS

SMP. NO.	DEPTH FEET	PERM. TO AIR MD. PLUG H	PLUG V	POROSITY PERCENT	FLUID OIL	SATS. WATER	GRAIN DEN.	DESCRIPTION
27	3216.0-17.0	<0.01	<0.01	7.3	30.4	52.9	2.35	SH, ARG
28	3217.0-18.0	<0.01	<0.01	10.3	38.7	28.0	2.43	SH, ARG
29	3218.0-19.0	<0.01	<0.01	6.8	35.8	50.7	2.25	SH, ARG
30	3219.0-20.0	<0.01	<0.01	9.5	21.0	36.7	2.30	SH, ARG
+ 31	3220.0-21.0	0.08	<0.01	8.0	55.3	32.4	3.10	SH, PYR, ARG
32	3221.0-22.0	<0.01	<0.01	6.0	33.9	51.1	2.23	SH, ARG
33	3222.0-23.0	<0.01	<0.01	6.4	37.6	51.0	2.27	SH, ARG
34	3223.0-24.0	3.00	2.00	12.5	16.2	75.7	2.69	SD, SLTY, SL/LMY
35	3224.0-25.0	0.74	0.50	13.6	7.3	88.0	2.68	SD, SLTY, SL/LMY, SHY
36	3225.0-26.0	1.30	0.51	11.7	9.4	84.8	2.72	SD, SLTY, PYR, SHY
37	3226.0-27.0	4.40	1.80	15.9	21.2	70.8	2.69	SD, SLTY, CL/INCL
38	3227.0-28.0	<0.01	<0.01	14.0	2.3	93.1	2.80	SH, SLTY, PYR
39	3228.0-29.0	<0.01	<0.01	14.0	0.0	93.0	2.77	SH, SLTY, PYR
+ 40	3229.0-30.0	51	6.30	9.2	38.3	47.2	2.65	SD, SLTY, CL/INCL, SH LAMS
41	3230.0-31.0	4.70	3.80	6.9	57.3	29.9	2.66	SD, SLTY, SH LAMS
42	3231.0-32.0	3.60	0.80	5.5	76.0	15.0	2.65	SD, SLTY, VF
43	3232.0-33.0	12	0.30	7.5	52.7	35.8	2.65	SD, SLTY, VF
44	3233.0-34.0	3.10	2.70	6.4	64.4	27.7	2.65	SD, SLTY
+ 45	3234.0-35.0	2.80	0.61	10.6	26.1	67.3	2.66	SD, SLTY, SHY
+ 46	3235.0-36.0	5.20	0.72	12.2	33.4	58.0	2.67	SD, SLTY, SH LAMS
+ 47	3236.0-37.0	24	2.60	10.5	6.9	88.7	2.76	SD, SLTY, PYR, SHY
48	3237.0-38.0	<0.01	<0.01	11.6	10.5	79.2	2.78	SH, SLTY, PYR
49	3238.0-39.0	<0.01	<0.01	10.4	6.9	87.9	2.74	SH, SLTY, SL/PYR
50	3239.0-40.0	1.50	0.40	14.3	5.4	80.7	2.73	SD, SLTY, SL/DOL, PYR, SHY
51	3240.0-41.0	0.57	0.08	10.2	2.5	82.6	2.77	SD, SLTY, SL/DOL, PYR, SHY
52	3241.0-42.0	135	6.20	17.1	2.5	87.1	2.68	SD, SLTY, SL/DOL, PYR, SHY
53	3242.0-43.0	19	10	15.1	3.1	83.2	2.68	SD, SL/PYR
54	3243.0-44.0	77	39	17.6	4.1	84.2	2.69	SD, SL/PYR
55	3244.0-45.0	118	89	16.4	2.2	83.0	2.66	SD, SL/DOL

These analyses, opinions or interpretations are based on observations and materials supplied by the client to whom, and for whose exclusive and confidential use, this report is made. The interpretations or opinions expressed represent the best judgment of Core Laboratories, Inc. (all errors and omissions excepted); but Core Laboratories, Inc. and its officers and employees, assume no responsibility and make no warranty or representation as to the productivity, accuracy or reliability of any data or other information with which such report is used or relied upon.

R. J. WALKER OIL COMPANY, INC. DATE: 10-27-82
 PAUL DUDECK NO. 1-10 WELL FORMATION: SIMPSON SAND

FILE NO: 3402-11453
 ANALYST: EDWARDS

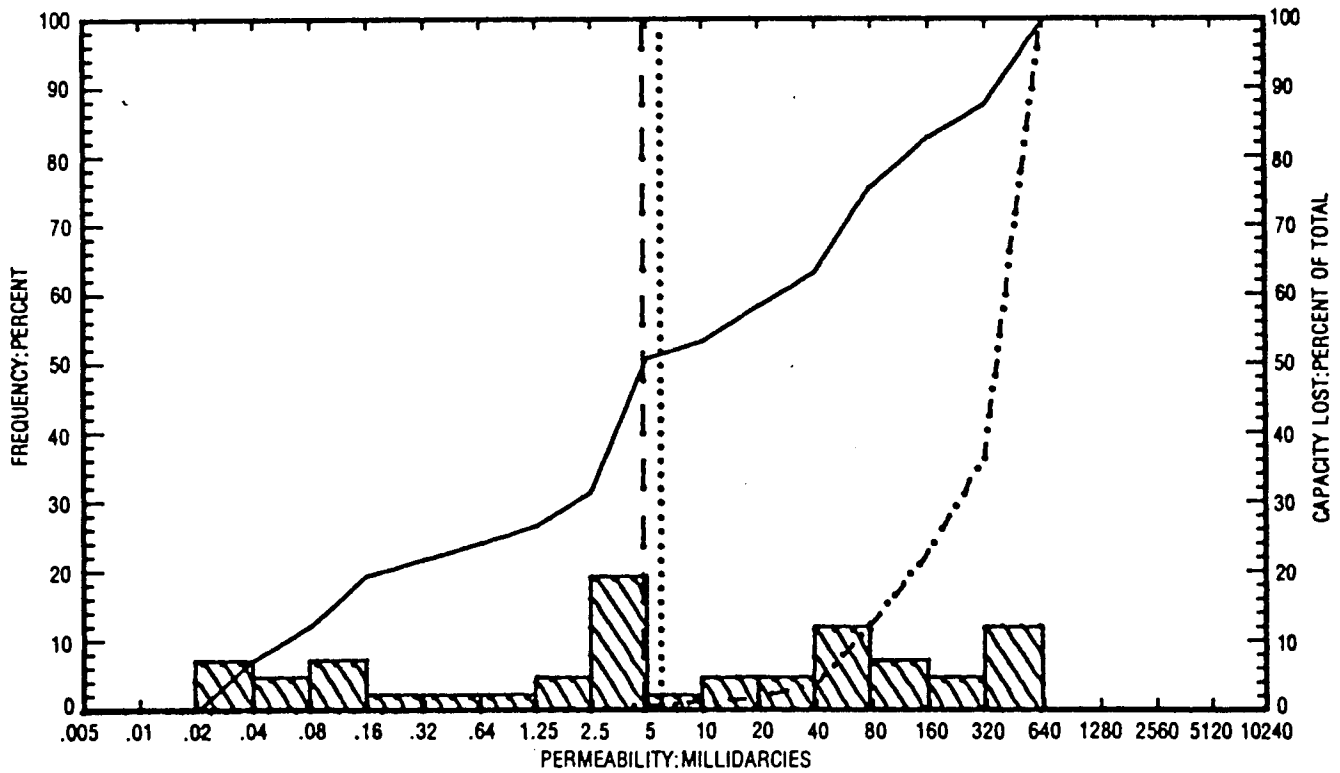
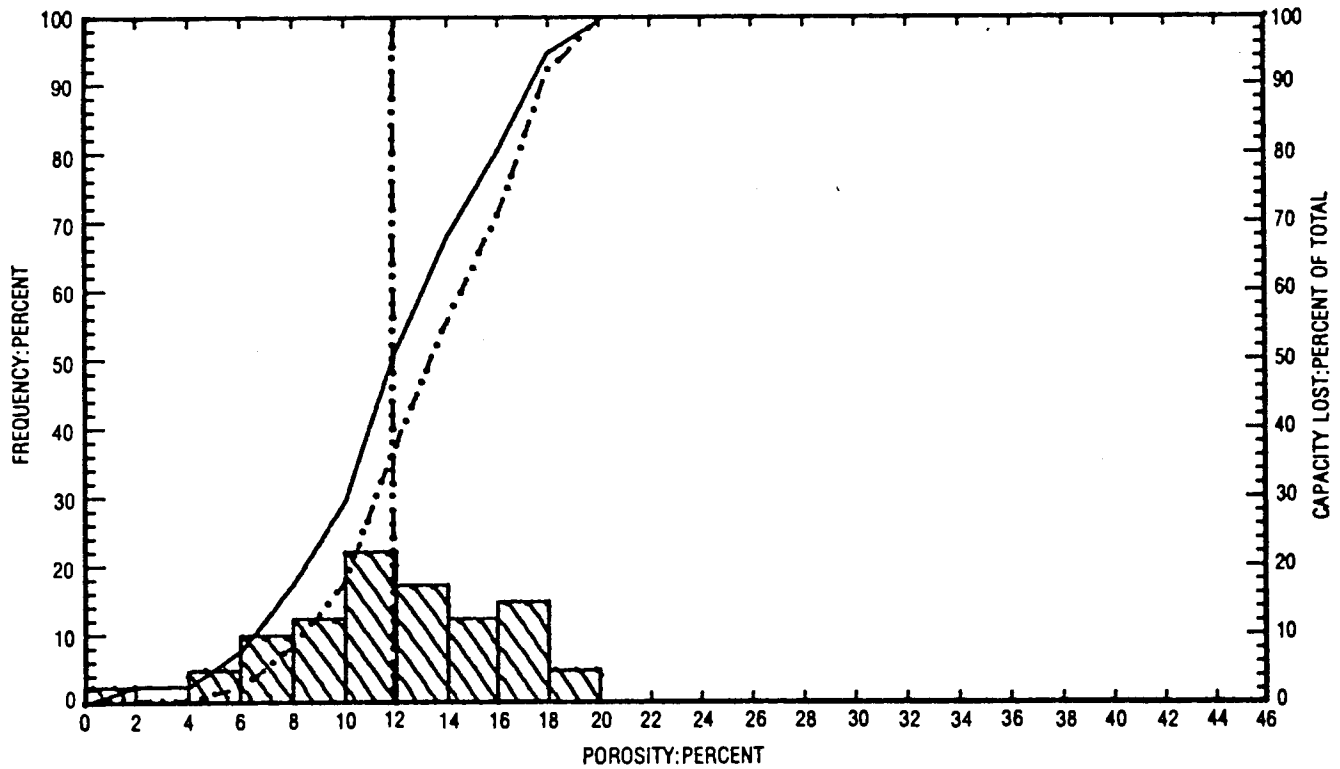
DEAN STARK PLUG ANALYSIS

SMP. NO.	DEPTH FEET	PLUG H	PERM. TO AIR MD.	PLUG V	POROSITY PERCENT	FLUID OIL	SATS. WATER	GRAIN DEN.	DESCRIPTION
56	3245.0-46.0	179		124	12.8	9.2	78.2	2.66	SD
57	3246.0-47.0	28		17	14.0	3.7	87.8	2.67	SD, SL/PYR, SHY
58	3247.0-48.0	83		48	13.7	8.6	81.6	2.66	SD
59	3248.0-49.0	40		9.40	11.5	6.3	77.2	2.88	SD, SLTY, FISS, PYR

3249.0-3250.0 TOO BROKEN FOR ANALYSIS

+ DENOTES HORIZONTAL CRACKS

These analyses, opinions or interpretations are based on observations and materials supplied by the client to whom, and for whose exclusive and confidential use, this report is made. The interpretations or opinions expressed represent the best judgment of Core Laboratories, Inc. (all errors and omissions excepted); but Core Laboratories, Inc. and its officers and employees, assume no responsibility and make no warranty or representations, as to the productivity, proper operations, or profitability of any oil, gas or other mineral well or sand in connection with which such report is used or relied upon.



PERMEABILITY AND POROSITY HISTOGRAMS PAGE 4

R. J. WALKER OIL COMPANY, INC.
PAUL DUDECK NO. 1-18 WELL

MARION COUNTY, KANSAS

LEGEND	
ARITHMETIC MEAN POROSITY
GEOMETRIC MEAN PERMEABILITY
MEDIAN VALUE	-----
CUMULATIVE FREQUENCY	————
CUMULATIVE CAPACITY LOST	- - - - -

1000.

100.

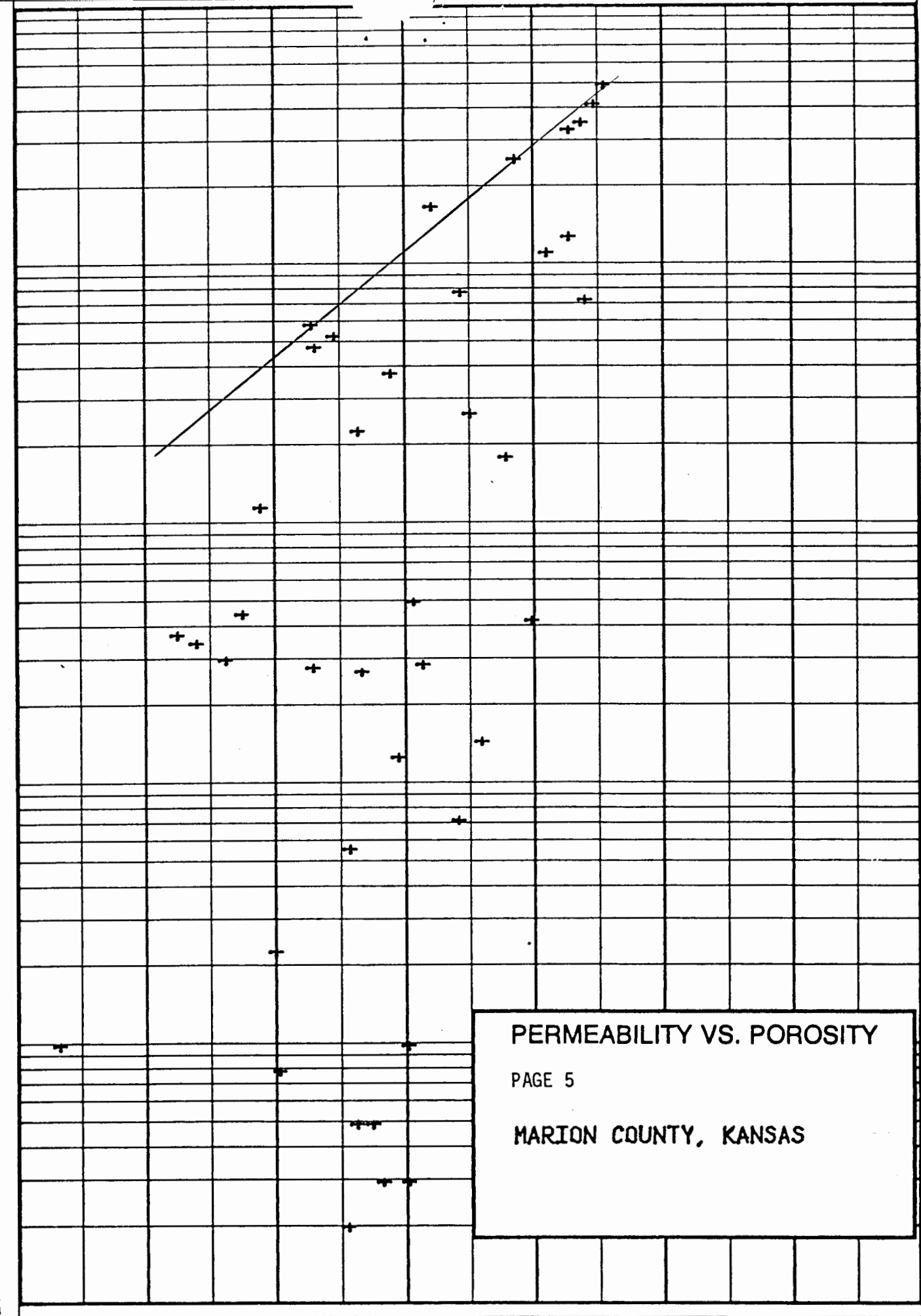
10.

1.

0.1

0.01

PERMEABILITY: MILLIDARCIES



0.0 4.0 8.0 12.0 16.0 20.0 24.0

POROSITY: PERCENT

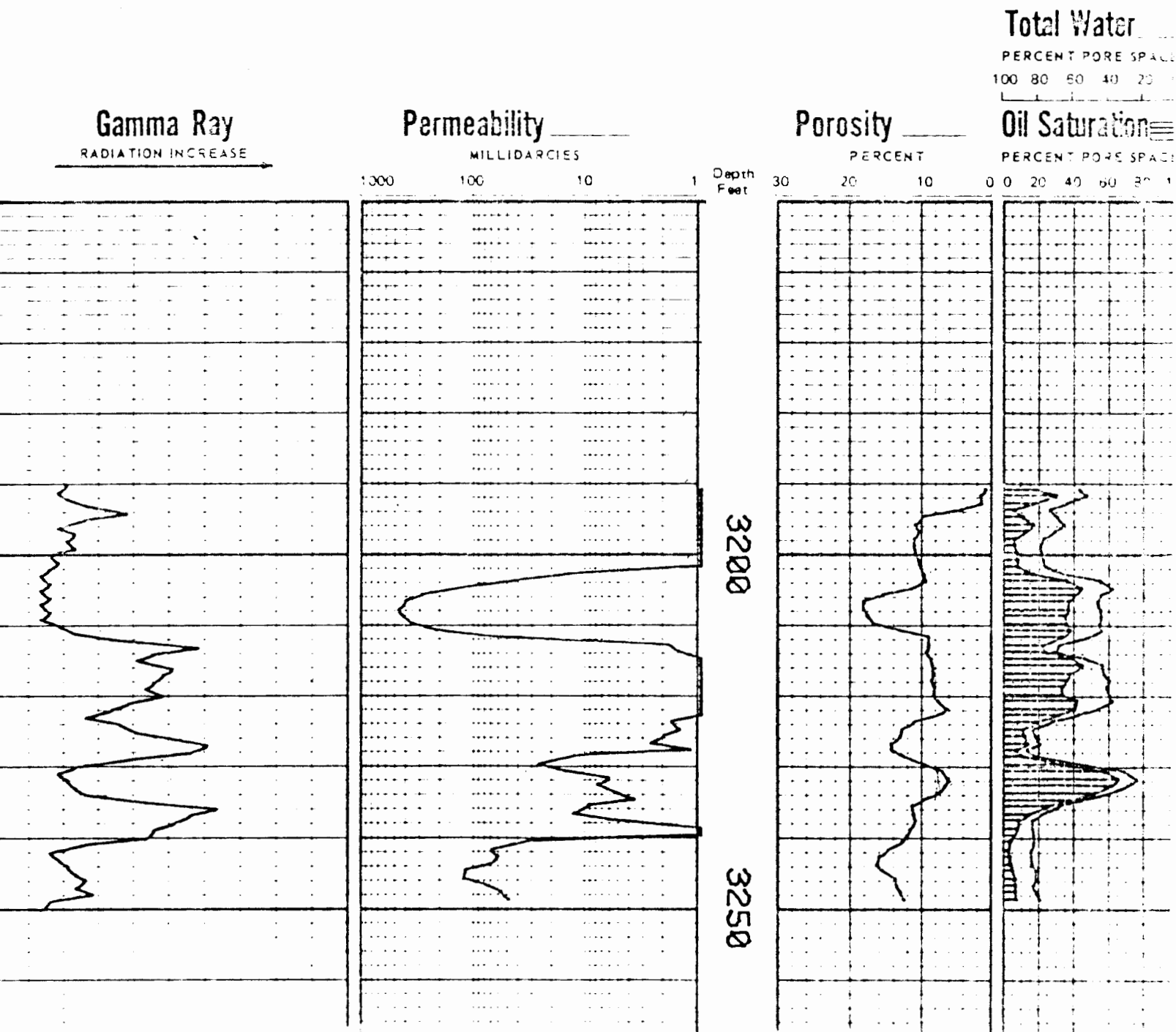
PERMEABILITY VS. POROSITY
PAGE 5
MARION COUNTY, KANSAS

COMPANY R. J. WALKER OIL COMPANY, INC. FILE NO. 3452-11453
 WELL PAUL DULECK NO. 1-19 WELL DATE 12-27-32
 FIELD _____ FORMATION SILFON SAND ELEV. _____
 COUNTY MARTIN STATE KANZAS DRLG FLD. WATER BASE MFL CORES _____
 LOCATION NE 24 NE SEC. 19-19-12

CORRELATION COREGRAPH

These analyses, opinions or interpretations are based on observations and material supplied by the client to whom, and for whose exclusive and confidential use, this report is made. The interpretations or opinions expressed represent the best judgment of Core Laboratories, Inc., (all errors or omissions excepted); but Core Laboratories, Inc., and its officers and employees assume no responsibility and make no warranty or representations as to the productivity, proper operation, or profitability of any oil, gas or other mineral well or land in connection with which such report is used or relied upon.

VERTICAL SCALE: 5" = 100'



+H+H+
CORE LABORATORIES, INC.
Petroleum Reservoir Engineering

OKLAHOMA CITY, OKLAHOMA

October 28, 1982

REPLY TO
SUITE 133
400 SOUTH VERMONT
OKLAHOMA CITY, OK
73108

R. J. Walker Oil Company, Inc.
150 Four Corporate Plaza
3524 N. W. 56th Place
Oklahoma City, Oklahoma 73112

Attn: Mr. Brent Salgat

Gentlemen:

Core Laboratories, Inc., Oklahoma City, has previously provided core storage space at no charge to our clients. During the last year our need for space became acute and many clients have been forced to rent storage in "mini-storage" warehouses. However, these spaces are expensive, difficult to maintain, and have limited accessibility.

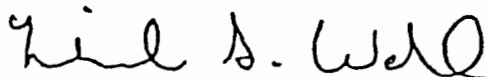
In an effort to solve these problems, we are instituting a new core storage program effective May 1, 1982. Additional space adjoining our present facility has been leased and prepared specifically for core storage. There will be a monthly charge for handling, maintenance and storage based on the amount of core involved.

Please contact us within 30 days of receiving your final report so that we may make arrangements to store your core, ship it to another location or donate it to one of the university geological surveys.

We believe this program will eliminate most of the problems associated with core storage and enable us to serve our clientele more efficiently in the future. If you have any questions regarding this program, please do not hesitate to contact us (405-946-5422).

Very truly yours,

CORE LABORATORIES, INC.



Michael S. Wahl
Laboratory Supervisor