



WESTERN TESTING CO., INC.

FORMATION TESTING

TICKET NO

7965

P. O. BOX 1599 PHONE (316) 262-5861 WICHITA, KANSAS 67201

Elevation 1524 Kelly Casing Formation Mississippi Eff. Pay Ft.

District August Date 12-21 Customer Order No.

COMPANY NAME George Reed

ADDRESS 5 4th Finical Center Wichita, ks. 67202

LEASE AND WELL NO. Meier #1 COUNTY Marion STATE ks Sec. 32 Twp 18 Rge 1E

Mail Invoice To SAME Co. Name Address No. Copies Requested

Mail Charts To SAME Address No. Copies Requested

Formation Test No. 1 Interval Tested from 2845 ft. to 2858 ft. Total Depth 2858 ft.

Packer Depth 2845 ft. Size 6 3/4 in. Packer Depth ft. Size in.

Packer Depth 2840 ft. Size 6 3/4 in. Packer Depth ft. Size in.

Depth of Selective Zone Set

Top Recorder Depth (Inside) 2847 ft. Recorder Number 2605 Cap. 4150

Bottom Recorder Depth (Outside) 2850 ft. Recorder Number 1560 Cap. 4500

Below Straddle Recorder Depth ft. Recorder Number Cap.

Drilling Contractor BERENTZ Drly Rig #3 Drill Collar Length 120 I. D. 2.25 in.

Mud Type Chem Viscosity 56 Weight Pipe Length I. D. in.

Weight 9.3 Water Loss 12.0 cc. Drill Pipe Length 2691 I. D. 3.25 in.

Chlorides 1800 P.P.M. Test Tool Length 21 ft. Tool Size 5 1/2 in.

Jars: Make 140 Serial Number Anchor Length 13 ft. Size 5 1/2 in.

Did Well Flow? 140 Reversed Out 140 Surface Choke Size 3/4 in. Bottom Choke Size 3/4 in.

Main Hole Size 7 7/8 in. Tool Joint Size 4 1/2 x 4 1/2 in.

Blow: STRANG Blow GAS TO SURFACE 17 MINS INITIAL FLOW PERIOD See GAS REPORT 94.500 C.F.P.V

Recovered 120 ft. of Mud + GAS Cut Oil 20% oil 10% mud 20% GAS

Recovered 60 ft. of GAS Cut Oil 90% oil 10% GAS

Recovered 180 ft. of Oil Cut WATER 10% oil 90% WATER

Recovered 240 ft. of WATER

Recovered ft. of

Remarks:

Time On Location 1:30 A.M. P.M. Time Pick Up Tool 2:40 A.M. P.M. Time Off Location 8:30 A.M. P.M.

Time Set Packer(s) 4:06 A.M. P.M. Time Started Off Bottom 621 A.M. P.M. Maximum Temperature 112

Initial Hydrostatic Pressure (A) 1431 P.S.I.

Initial Flow Period Minutes 30 (B) 52 P.S.I. to (C) 84 P.S.I.

Initial Closed In Period Minutes 30 (D) 580 P.S.I.

Final Flow Period Minutes 45 (E) 150 P.S.I. to (F) 179 P.S.I.

Final Closed In Period Minutes 30 (G) 580 P.S.I.

Final Hydrostatic Pressure (H) 1389 P.S.I.

COMPANY TERMS

Western Testing Co., Inc. shall not be liable for damages of any kind to the property or personnel of the one for whom a test is made or for any loss suffered or sustained directly or indirectly through the use of its equipment, of its statements or opinion concerning the results of any test. Tools lost or damaged in the hole shall be paid at cost by the party for whom the test is made.

All charges subject to 12% interest after 60 days from date of invoice. Any expense incurred for collection will be added to the original amount.

Test Approved By [Signature] Signature of Customer or his authorized representative

Western Representative [Signature]

FIELD INVOICE

Open Hole Test \$ 550.00
Miscellaneous \$
Straddle Test \$
Jars \$
Selective Zone \$
Safety Joint \$
Standby \$
Evaluation \$
Extra Packer \$
Circ. Sub. \$
Mileage 90 \$ 67.50
Fluid Sampler \$
Extra Charts \$
Insurance \$
TOTAL \$ 617.50

RECEIVED DEC 22 1980



**GAS FLOW REPORT**

**Nº 1507**

Date 12-21-80 Ticket 7965 Company George Reed  
 Well Name and No. Meier #1 Dst No. 1 Interval Tested 2832-2845  
 County MARION State KANSAS Sec. 32 Twp. 18 Rg. 1E

Time Gauge in Min.	P.S.I. on Merla Orifice Well Tester	Size of Orifice	P.S.I. on Pitot Tester	P.S.I. on Side Static Tester	Description of Flow
<i>GAS TO SURFACE 17 mins. - Essential Flow Period</i>					
<i>PSI PRE FLOW</i>					
<i>4:32 Diving</i>	<i>9</i>	<i>1/2</i>			<i>108.000 C.F.P.D.</i>

<i>PSI</i>		<b>SECOND FLOW</b>			
<i>10 MINS</i>	<i>9</i>	<i>1/2</i>			<i>108.000 C.F.P.D.</i>
<i>20 MINS</i>	<i>7</i>	<i>1/2</i>			<i>94.500 C.F.P.D.</i>
<i>30 MINS</i>	<i>7</i>	<i>1/2</i>			<i>94.500 C.F.P.D.</i>
<i>40 MINS</i>	<i>7</i>	<i>1/2</i>			<i>94.500 C.F.P.D.</i>
<i>45 MINS</i>	<i>7</i>	<i>1/2</i>			<i>94.500 C.F.P.D.</i>

*OK*  
*Jm*

**GAS BOTTLE**

Serial No. \_\_\_\_\_ Date Bottle Filled \_\_\_\_\_ Date to be Invoiced \_\_\_\_\_

Requisition and Provisions for high pressure stainless steel gas bottles. Western Testing Co., Inc. shall not be liable for damage of any kind to property or personnel of the one whom gas bottle is filled or for any loss suffered or sustained directly or indirectly through the use of these bottles. By signing of this ticket showing receipt of a gas testing bottle, the undersigned agrees for himself and as agent for operator, to return this bottle to Western Testing Co., Inc. within thirty (30) days free of charge, or be invoiced in the amount of \$75.00 (total charge). Should valve or seal plug be missing or damaged beyond repair, operator shall be invoiced for repairs at our invoiced price.

All charges subject to 1% per month, equal to 12% interest per annum after 30 days from date of invoice. Any expense incurred for collection will be added to the original amount.

COMPANY'S NAME George Reed

Authorized by James Reed

WESTERN TESTING CO., INC.

Pressure Data

Date 12-21

Test Ticket No. 7965

Recorder No. 2605

Capacity 4150

Location 2847 Ft.

Clock No. \_\_\_\_\_

Elevation 1524 KB

Well Temperature 112 °F

Point	Pressure		Time Given	Time Computed
A. Initial Hydrostatic Mud	<u>1431</u> P.S.I.	Open Tool	<u>4:06 P.M.</u>	
B. First Initial Flow Pressure	<u>57</u> P.S.I.	First Flow Pressure	<u>30</u> Mins.	<u>30</u> Mins.
C. First Final Flow Pressure	<u>95</u> P.S.I.	Initial Closed-in Pressure	<u>30</u> Mins.	<u>30</u> Mins.
D. Initial Closed-in Pressure	<u>583</u> P.S.I.	Second Flow Pressure	<u>45</u> Mins.	<u>45</u> Mins.
E. Second Initial Flow Pressure	<del>190</del> <u>144</u> P.S.I.	Final Closed-in Pressure	<u>30</u> Mins.	<u>33</u> Mins.
F. Second Final Flow Pressure	<u>190</u> P.S.I.			
G. Final Closed-in Pressure	<u>587</u> P.S.I.			
H. Final Hydrostatic Mud	<u>1377</u> P.S.I.			

PRESSURE BREAKDOWN

First Flow Pressure

Breakdown: 6 Inc.  
of 5 mins. and a  
final inc. of 0 Min.

Initial Shut-In

Breakdown: 10 Inc.  
of 3 mins. and a  
final inc. of 0 Min.

Second Flow Pressure

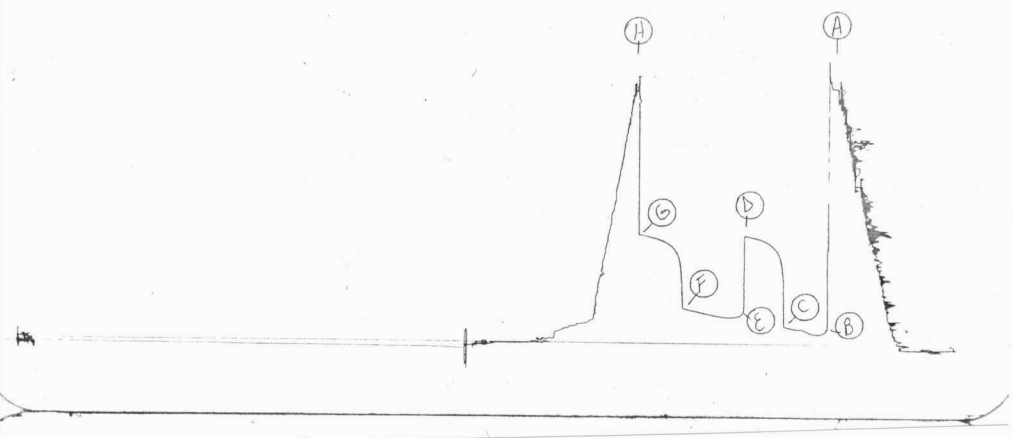
Breakdown: 9 Inc.  
of 5 mins. and a  
final inc. of 0 Min.

Final Shut-In

Breakdown: 11 Inc.  
of 3 mins. and a  
final inc. of 0 Min.

Point Mins.	Press.	Point Minutes	Press.	Point Minutes	Press.	Point Minutes	Press.
P 1	<u>57</u>	0	<u>95</u>	0	<u>144</u>	0	<u>190</u>
P 2	<u>57</u>	3	<u>464</u>	5	<u>144</u>	3	<u>455</u>
P 3	<u>57</u>	6	<u>504</u>	10	<u>144</u>	6	<u>502</u>
P 4	<u>70</u>	9	<u>529</u>	15	<u>146</u>	9	<u>531</u>
P 5	<u>82</u>	12	<u>546</u>	20	<u>152</u>	12	<u>541</u>
P 6	<u>86</u>	15	<u>554</u>	25	<u>159</u>	15	<u>554</u>
P 7	<u>95</u>	18	<u>564</u>	30	<u>167</u>	18	<u>562</u>
P 8		21	<u>570</u>	35	<u>176</u>	21	<u>568</u>
P 9		24	<u>577</u>	40	<u>184</u>	24	<u>575</u>
P 10		27	<u>581</u>	45	<u>190</u>	27	<u>581</u>
P 11		30	<u>583</u>	50		30	<u>585</u>
P 12		33		55		33	<u>587</u>
P 13		36		60		36	
P 14		39		65		39	
P 15		42		70		42	
P 16		45		75		45	
P 17		48		80		48	
P 18		51		85		51	
P 19		54		90		54	
P 20		57				57	
		60				60	

TKI # 7965  
I



Company George Reed Lease & Well No. Meier #1  
 Elevation 1524 Kelly Bushing Formation Mississippi Effective Pay - Ft. Ticket No. 7965  
 Date 12-21-80 Sec. 32 Twp. 18S Range 1E County Marion State Kansas  
 Test Approved by George Reed Western Representative James Ricketts

Formation Test No. 1 Interval Tested from 2845 ft. to 2858 ft. Total Depth 2858 ft.  
 Packer Depth 2845 ft. Size 6 3/4 in. Packer Depth - ft. Size - in.  
 Packer Depth 2840 ft. Size 6 3/4 in. Packer Depth - ft. Size - in.  
 Depth of Selective Zone Set -

Top Recorder Depth (Inside) 2847 ft. Recorder Number 2605 Cap. 4150  
 Bottom Recorder Depth (Outside) 2850 ft. Recorder Number 1560 Cap. 4500  
 Below Straddle Recorder Depth - ft. Recorder Number - Cap. -

Drilling Contractor Berentz Drilling Rig #3 Drill Collar Length 120 I. D. 2.25 in.  
 Mud Type Chemical Viscosity 58 Weight Pipe Length - I. D. - in.  
 Weight 9.3 Water Loss 12.0 cc. Drill Pipe Length 2691 I. D. 3.25 in.  
 Chlorides 1800 P.P.M. Test Tool Length 21 ft. Tool Size 5 1/4 in.  
 Jars: Make No Serial Number - Anchor Length 13 ft. Size 5 1/2 in.  
 Did Well Flow? No Reversed Out No Surface Choke Size 3/4 in. Bottom Choke Size 3/4 in.  
 Main Hole Size 7 7/8 in. Tool Joint Size 4 1/2 XH in.

Blow: Strong blow. Gas to surface in seventeen minutes initial flow period. See attached sheet for gas measurements.

Recovered 120 ft. of mud & gas cut oil - 70% oil; 10% mud; 20% gas  
 Recovered 60 ft. of gas cut oil - 90% oil; 10% gas  
 Recovered 180 ft. of oil cut water - 10% oil; 90% water  
 Recovered 240 ft. of water  
 Recovered ft. of

Remarks: \_\_\_\_\_

Time Set Packer(s) 4:06 ~~AM~~ P.M. Time Started Off Bottom 6:21 ~~AM~~ P.M. Maximum Temperature 112  
 Initial Hydrostatic Pressure ..... (A) 1431 P.S.I.  
 Initial Flow Period ..... Minutes 30 (B) 57 P.S.I. to (C) 95 P.S.I.  
 Initial Closed In Period ..... Minutes 30 (D) 583 P.S.I.  
 Final Flow Period ..... Minutes 45 (E) 144 P.S.I. to (F) 190 P.S.I.  
 Final Closed In Period ..... Minutes 33 (G) 587 P.S.I.  
 Final Hydrostatic Pressure ..... (H) 1377 P.S.I.

## GAS FLOW REPORT

Date 12-21-80 Ticket 7965 Company George Reed  
 Well Name and No. Meier #1 Dst No. 1 Interval Tested 2832-2845  
 County Marion State Kansas Sec. 32 Twp. 18S Rg. 1E

Time Gauge Pre-Flow	Time Gauge in Min.	P.S.I. on Merla Orifice Well Tester	P.S.I. on Pitot Tester	P.S.I. on Side Static Tester	P.S.I. on U-Tube Tester	Description of Flow
<b>PRE FLOW</b>						
Gas to surface 17 minutes						
	10 min	9 PSIG	½" Orifice			108,000 C.F.P.D.

<b>SECOND FLOW</b>						
	10 Min	9 PSIG	½" Orifice			108,000 C.F.P.D.
	20 Min	7 PSIG	½" Orifice			94,500 C.F.P.D.
	30 Min	7 PSIG	½" Orifice			94,500 C.F.P.D.
	40 Min	7 PSIG	½" Orifice			94,500 C.F.P.D.
	45 Min	7 PSIG	½" Orifice			94,500 C.F.P.D.

### GAS BOTTLE

Serial No. \_\_\_\_\_ Date Bottle Filled \_\_\_\_\_ Date to be Invoiced 12-21-80

Requisition and Provisions for high pressure stainless steel gas bottles. Western Testing Co., Inc. shall not be liable for damage of any kind to property or personnel of the one whom gas bottle is filled or for any loss suffered or sustained directly or indirectly through the use of these bottles. By signing of this ticket showing receipt of a gas testing bottle, the undersigned agrees for himself and as agent for operator, to return this bottle to Western Testing Co., Inc. within thirty (30) days free of charge, or be invoiced in the amount of \$75.00 (total charge). Should valve or seal plug be missing or damaged beyond repair, operator shall be invoiced for repairs at our invoiced price.

All charges subject to 1½% per month, equal to 18% interest per annum after 30 days from date of invoice. Any expense incurred for collection will be added to the original amount.

COMPANY'S NAME George Reed  
 Authorized by James Ricketts

**WESTERN TESTING CO., INC.**  
**Pressure Data**

Date 12-21-80 Test Ticket No. 7965  
 Recorder No. 2605 Capacity 4150 Location 2847 Ft.  
 Clock No. - Elevation 1524 Kelly Bushing Well Temperature 112 °F

Point	Pressure		Time Given	Time Computed
A Initial Hydrostatic Mud	<u>1431</u>	P.S.I.	<u>4:06P</u>	<u>M</u>
B First Initial Flow Pressure	<u>57</u>	P.S.I.	<u>30</u>	Mins. <u>30</u> Mins.
C First Final Flow Pressure	<u>95</u>	P.S.I.	<u>30</u>	Mins. <u>30</u> Mins.
D Initial Closed-in Pressure	<u>583</u>	P.S.I.	<u>45</u>	Mins. <u>45</u> Mins.
E Second Initial Flow Pressure	<u>144</u>	P.S.I.	<u>30</u>	Mins. <u>33</u> Mins.
F Second Final Flow Pressure	<u>190</u>	P.S.I.		
G Final Closed-in Pressure	<u>587</u>	P.S.I.		
H Final Hydrostatic Mud	<u>1377</u>	P.S.I.		

**PRESSURE BREAKDOWN**

**First Flow Pressure**  
 Breakdown: 6 Inc.  
 of 5 mins. and a  
 final inc. of 0 Min.

**Initial Shut-In**  
 Breakdown: 10 Inc.  
 of 3 mins. and a  
 final inc. of 0 Min.

**Second Flow Pressure**  
 Breakdown: 9 Inc.  
 of 5 mins. and a  
 final inc. of 0 Min.

**Final Shut-In**  
 Breakdown: 11 Inc.  
 of 3 mins. and a  
 final inc. of 0 Min.

Point Mins.	Press.	Point Minutes	Press.	Point Minutes	Press.	Point Minutes	Press.
P 1 <u>0</u>	<u>57</u>	<u>0</u>	<u>95</u>	<u>0</u>	<u>144</u>	<u>0</u>	<u>190</u>
P 2 <u>5</u>	<u>57</u>	<u>3</u>	<u>464</u>	<u>5</u>	<u>144</u>	<u>3</u>	<u>455</u>
P 3 <u>10</u>	<u>57</u>	<u>6</u>	<u>504</u>	<u>10</u>	<u>144</u>	<u>6</u>	<u>502</u>
P 4 <u>15</u>	<u>70</u>	<u>9</u>	<u>529</u>	<u>15</u>	<u>146</u>	<u>9</u>	<u>531</u>
P 5 <u>20</u>	<u>82</u>	<u>12</u>	<u>546</u>	<u>20</u>	<u>152</u>	<u>12</u>	<u>541</u>
P 6 <u>25</u>	<u>86</u>	<u>15</u>	<u>554</u>	<u>25</u>	<u>159</u>	<u>15</u>	<u>554</u>
P 7 <u>30</u>	<u>95</u>	<u>18</u>	<u>564</u>	<u>30</u>	<u>167</u>	<u>18</u>	<u>562</u>
P 8 _____	_____	<u>21</u>	<u>570</u>	<u>35</u>	<u>176</u>	<u>21</u>	<u>568</u>
P 9 _____	_____	<u>24</u>	<u>577</u>	<u>40</u>	<u>184</u>	<u>24</u>	<u>575</u>
P10 _____	_____	<u>27</u>	<u>581</u>	<u>45</u>	<u>190</u>	<u>27</u>	<u>581</u>
P11 _____	_____	<u>30</u>	<u>583</u>	_____	_____	<u>30</u>	<u>585</u>
P12 _____	_____	_____	_____	_____	_____	<u>33</u>	<u>587</u>
P13 _____	_____	_____	_____	_____	_____	_____	_____
P14 _____	_____	_____	_____	_____	_____	_____	_____
P15 _____	_____	_____	_____	_____	_____	_____	_____
P16 _____	_____	_____	_____	_____	_____	_____	_____
P17 _____	_____	_____	_____	_____	_____	_____	_____
P18 _____	_____	_____	_____	_____	_____	_____	_____
P19 _____	_____	_____	_____	_____	_____	_____	_____
P20 _____	_____	_____	_____	_____	_____	_____	_____