

OILFIELD RESEARCH LABORATORIES

536 NORTH HIGHLAND - CHANUTE, KANSAS 66720 - PHONE (316) 431-2650

July 17, 1980

TANL Corporation
P.O. Box 302
Osawatomie, Kansas 66064

Gentlemen:

Enclosed herewith are the results of tests run on the rotary core taken from the Robinson Lease, Well No. 14, Miami County, Kansas, and submitted to our laboratory on June 25, 1980.

The core was sampled and sealed in plastic bags by a representative of the client.

Your business is greatly appreciated.

Very truly yours,

OILFIELD RESEARCH LABORATORIES


Sanford A. Michel

SAM/tem

5 c to Osawatomie, Kansas

Oilfield Research Laboratories

GENERAL INFORMATION & SUMMARY

Company TANL Corporation Lease Robinson Well No. 14
 Location 150' EWB & 200' S of Pottawatomie Creek
 Section 14 Twp. 18S Rge. 22E County Miami State Kansas

Elevation, Feet	
Name of Sand	Peru
Top of Core	268.0
Bottom of Core	287.0
Top of Sand	268.0
Bottom of Sand	287.0
Total Feet of Permeable Sand	18.5

Distribution of Permeable Sand: Permeability Range Millidarcys	Feet	Cum. Ft.
0 - 4	8.2	8.2
4 - 10	3.7	11.9
12 - 40	3.6	15.5
60 - 70	1.0	16.5
180 & Above	2.0	18.5

Average Permeability Millidarcys	35.6
Average Percent Porosity	18.5
Average Percent Oil Saturation	26.6
Average Percent Water Saturation	36.7
Average Oil Content, Bbls./A. Ft.	381.
Total Oil Content, Bbls./Acre	7,040.

OILFIELD RESEARCH LABORATORIES

LOGName TANL Corporation Lease Robinson Well No. 14

<u>Depth Interval, Feet</u>	<u>Description</u>
268.0 - 272.7	Grayish brown calcareous very shaly sandstone.
272.7 - 273.2	Hard gray limestone.
273.2 - 274.2	Brown very shaly calcareous sandstone.
274.2 - 275.0	Brown slightly shaly calcareous sandstone.
275.0 - 276.3	Brown very shaly calcareous sandstone.
276.3 - 277.3	Brown slightly shaly calcareous sandstone.
277.3 - 283.7	Black slightly carbonaceous calcareous sandstone.
283.7 - 285.0	Brown shaly calcareous sandstone.
285.0 - 286.2	Brown very shaly sandstone.
286.2 - 287.0	Brown shaly calcareous sandstone.

RESULTS OF SATURATION & PERMEABILITY TESTS

TABLE 1-B

Company TANL Corporation Lease Robinson Well No. 14

Sample No.	Depth, Feet	Effective Porosity Percent	Percent Saturation			Oil Content Bbbls. / A Ft.	Perm., Mill.	Feet of Sand		Total Oil Content	Perm. Capacity Ft. X md.
			Oil	Water	Total			Ft.	Cum. Ft.		
1	268.5	15.8	26	67	93	319	2.0	1.0	319	2.00	
2	269.5	21.2	33	37	70	543	1.5	1.0	543	1.50	
3	270.5	17.7	28	56	84	385	3.3	1.0	385	3.30	
4	271.5	16.3	11	67	78	139	0.27	1.0	139	0.27	
5	272.5	19.4	33	39	72	497	0.31	0.7	348	0.22	
6	273.5	16.8	9	51	60	117	2.3	1.0	117	2.30	
7	274.5	15.5	36	61	97	433	7.7	0.8	346	6.16	
8	275.5	18.7	18	48	66	261	1.2	1.3	339	1.56	
9	276.5	19.2	47	42	89	700	8.0	1.0	700	8.00	
10	277.5	20.3	22	20	42	346	68.	1.0	346	68.00	
11	278.5	25.0	33	27	60	640	32.	1.0	640	32.00	
12	279.5	21.3	12	11	23	198	13.	1.0	198	13.00	
13	280.5	19.1	58	3	61	859	38.	1.0	859	38.00	
14	281.5	22.8	16	29	45	283	266.	1.0	283	266.00	
15	282.5	20.5	8	11	19	127	182.	1.0	127	182.00	
16	283.5	19.2	28	16	44	417	35.0	0.6	250	21.00	
17	284.5	15.3	27	38	65	321	6.0	1.1	353	6.60	
18	285.5	15.3	35	32	67	415	1.1	1.2	498	1.32	
19	286.5	12.6	32	37	69	313	5.6	0.8	250	4.48	

Oilfield Research Laboratories

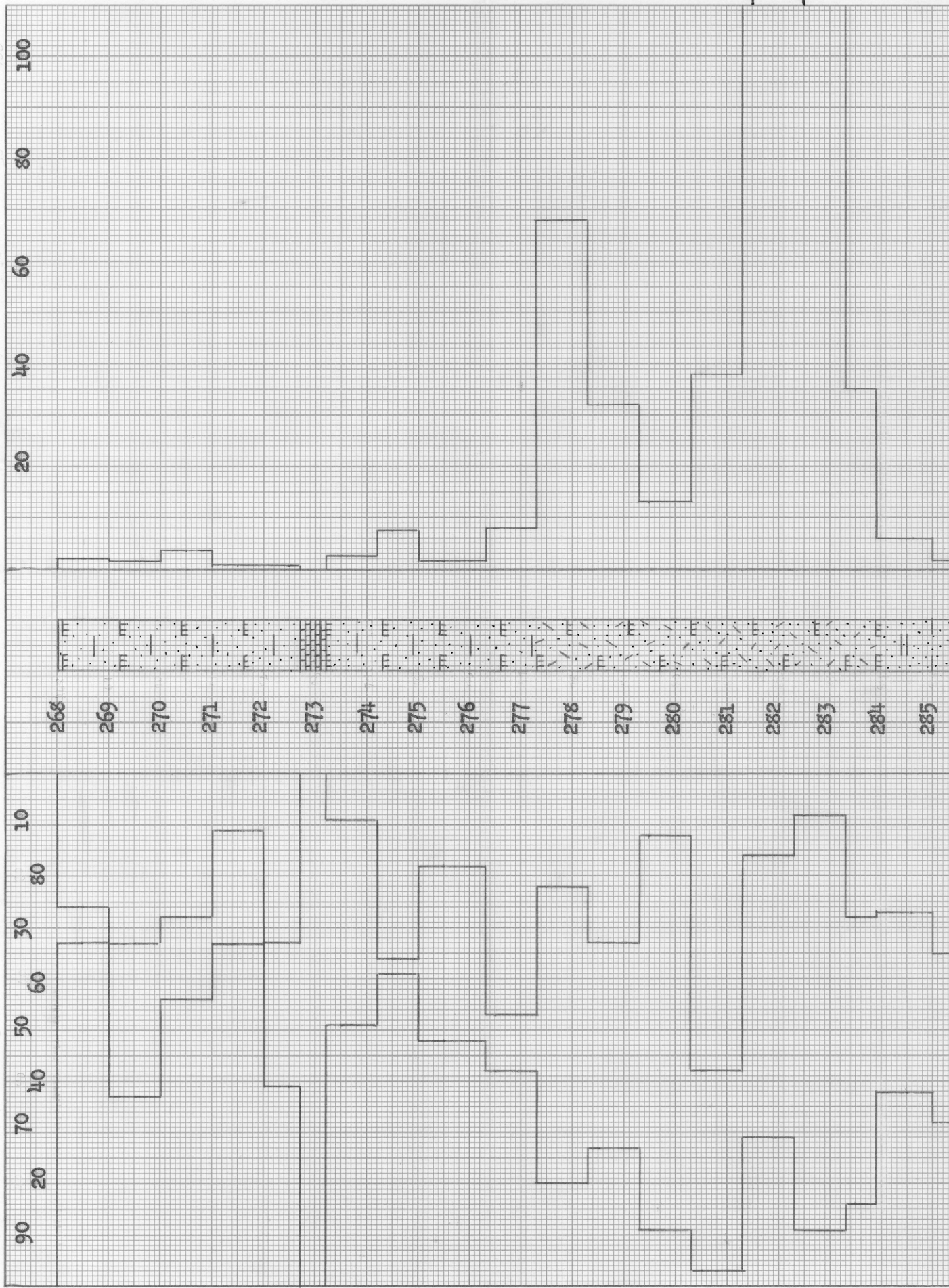
SUMMARY OF PERMEABILITY & SATURATION TESTS

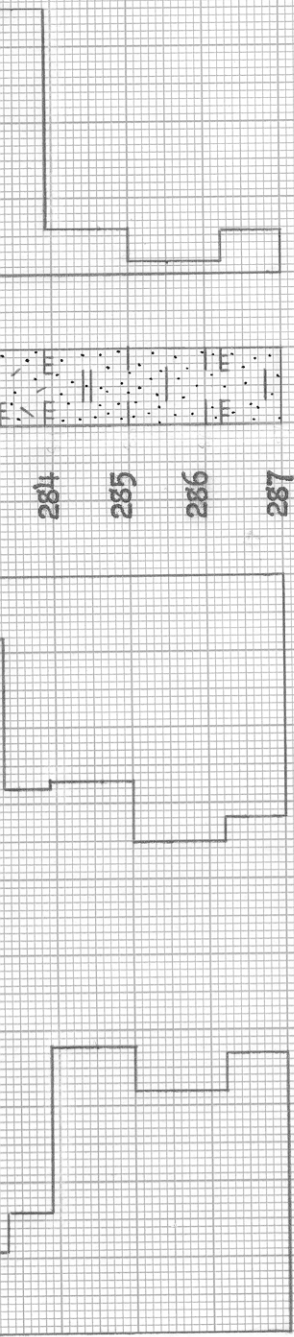
TABLE III

Company	Lease	Well No.	14	
Depth Interval, Feet	Feet of Core Analyzed	Average Permeability, Millidarcys	Permeability Capacity Ft. x Md.	Total Oil Content Bbls./Acre
Depth Interval, Feet	Average Porosity	Average Percent Water Saturation	Average Oil Content Bbl./A. Ft.	
268.0 - 287.0	18.5	35.6	657.71	
268.0 - 287.0	18.5	26.6		7,040
		36.7	381	






WATER SAT., PERCENT ← OIL SAT., PERCENT

PERMEABILITY, IN MILLIDARCYS





KEY:

-  CALCAREOUS SHALY SANDSTONE
-  CARBONACEOUS CALCAREOUS SANDSTONE
-  LIMESTONE
-  SHALY SANDSTONE
-  SHALY SANDSTONE

TANL CORPORATION

ROBINSON LEASE WELLS NO. 14

MIAMI COUNTY, KANSAS

DEPTH INTERVAL, FEET	FEET OF CORE ANALYZED	AVERAGE POROSITY PERCENT	AVG. OIL SATURATION PERCENT	AVG. WATER SATURATION PERCENT	AVERAGE PERMEABILITY, MILLIDARCY
268.0 - 287.0	18.5	18.5	26.6	36.7	35.6