

TRILOBITE TESTING, INC.

DRILL STEM TEST REPORT

American Energies Corporation

6-19S-1E Marion

155 N Market Ste 710
Wichita, Ks 67202

Bartel Trust 1-6

Job Ticket: 34994

DST#: 1

ATTN: Dave Goldak

Test Start: 2011.10.10 @ 13:26:20

GENERAL INFORMATION:

Formation: **Mississippi**

Deviated: No Whipstock: ft (KB)

Time Tool Opened: 14:58:20

Time Test Ended: 22:36:50

Test Type: Conventional Bottom Hole (Initial)

Tester: Leal Cason

Unit No: 45

Interval: **2846.00 ft (KB) To 2892.00 ft (KB) (TVD)**

Reference Elevations: 1573.00 ft (KB)

Total Depth: 2892.00 ft (KB) (TVD)

1564.00 ft (CF)

Hole Diameter: 7.88 inches Hole Condition: Good

KB to GR/CF: 9.00 ft

Serial #: 6798

Inside

Press@RunDepth: 496.33 psig @ 2847.00 ft (KB)

Capacity: 8000.00 psig

Start Date: 2011.10.10

End Date: 2011.10.10

Last Calib.: 2011.10.10

Start Time: 13:26:21

End Time: 22:36:50

Time On Btm: 2011.10.10 @ 14:55:50

Time Off Btm: 2011.10.10 @ 18:45:35

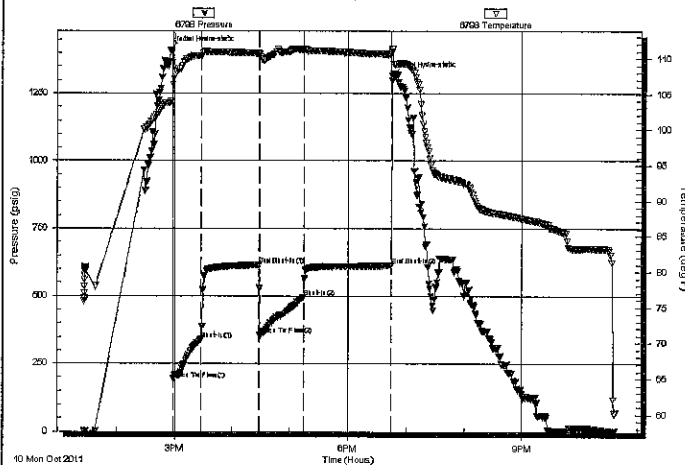
TEST COMMENT: IF: Strong Blow, BOB in 1 minute, GTS in 11 minutes, Gauged Gas & Caught Sample

IS: Blow back Built To BOB in 8 minutes

FF: Strong Blow, BOB in 30 seconds, GTS Immediate, Gauged Gas

FS: Blow back Built To BOB in 6 minutes

Pressure vs. Time



PRESSURE SUMMARY

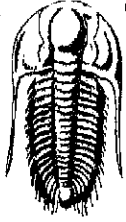
Time (Min.)	Pressure (psig)	Temp (deg F)	Annotation
0	1411.35	103.97	Initial Hydro-static
3	193.09	106.28	Open To Flow (1)
32	339.68	110.38	Shut-In(1)
92	613.49	110.76	End Shut-In(1)
93	355.91	110.62	Open To Flow (2)
139	496.33	111.26	Shut-In(2)
229	612.97	110.60	End Shut-In(2)
230	1314.62	110.92	Final Hydro-static

Recovery

Length (ft)	Description	Volume (bbl)
0.00	GIP 1323	0.00
180.00	Water	0.89
120.00	MWCO 10%M 30%W 60%O	0.86
1197.00	GSY Oil 10%G 90%O	16.79

Gas Rates

	Choke (Inches)	Pressure (psig)	Gas Rate (Mcf/d)
First Gas Rate	0.25	7.00	33.95
Last Gas Rate	0.25	4.00	29.19
Max. Gas Rate	0.25	7.00	33.95



**TRILOBITE
TESTING, INC.**

DRILL STEM TEST REPORT

FLUID SUMMARY

American Energies Corporation

6-19S-1E Marion

155 N Market Ste 710
Wichita, Ks 67202

Bartel Trust 1-6

Job Ticket: 34994

DST#: 1

ATTN: Dave Goldak

Test Start: 2011.10.10 @ 13:26:20

Mud and Cushion Information

Mud Type: Gel Chem

Cushion Type:

Oil API:

30.4 deg API

Mud Weight: 9.00 lb/gal

Cushion Length:

ft

Water Salinity:

98000 ppm

Viscosity: 36.00 sec/qt

Cushion Volume:

bbbl

Water Loss: 10.77 in³

Gas Cushion Type:

Resistivity: ohm.m

Gas Cushion Pressure:

psig

Salinity: 1800.00 ppm

Filter Cake: 0.20 inches

Recovery Information

Recovery Table

Length ft	Description	Volume bbl
0.00	GIP 1323	0.000
180.00	Water	0.885
120.00	MWCO 10%M 30%W 60%O	0.863
1197.00	GSY Oil 10%G 90%O	16.791

Total Length: 1497.00 ft Total Volume: 18.539 bbl

Num Fluid Samples: 0

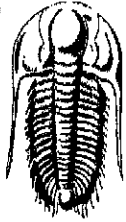
Num Gas Bombs: 0

Serial #:

Laboratory Name:

Laboratory Location:

Recovery Comments: Oil API was 31 @ 66 degrees
RW Was .09 @ 65 degrees



**TRILOBITE
TESTING, INC.**

DRILL STEM TEST REPORT

GAS RATES

American Energies Corporation

6-19S-1E Marion

155 N Market Ste 710
Wichita, Ks 67202

Bartel Trust 1-6

Job Ticket: 34994

DST#: 1

ATTN: Dave Goldak

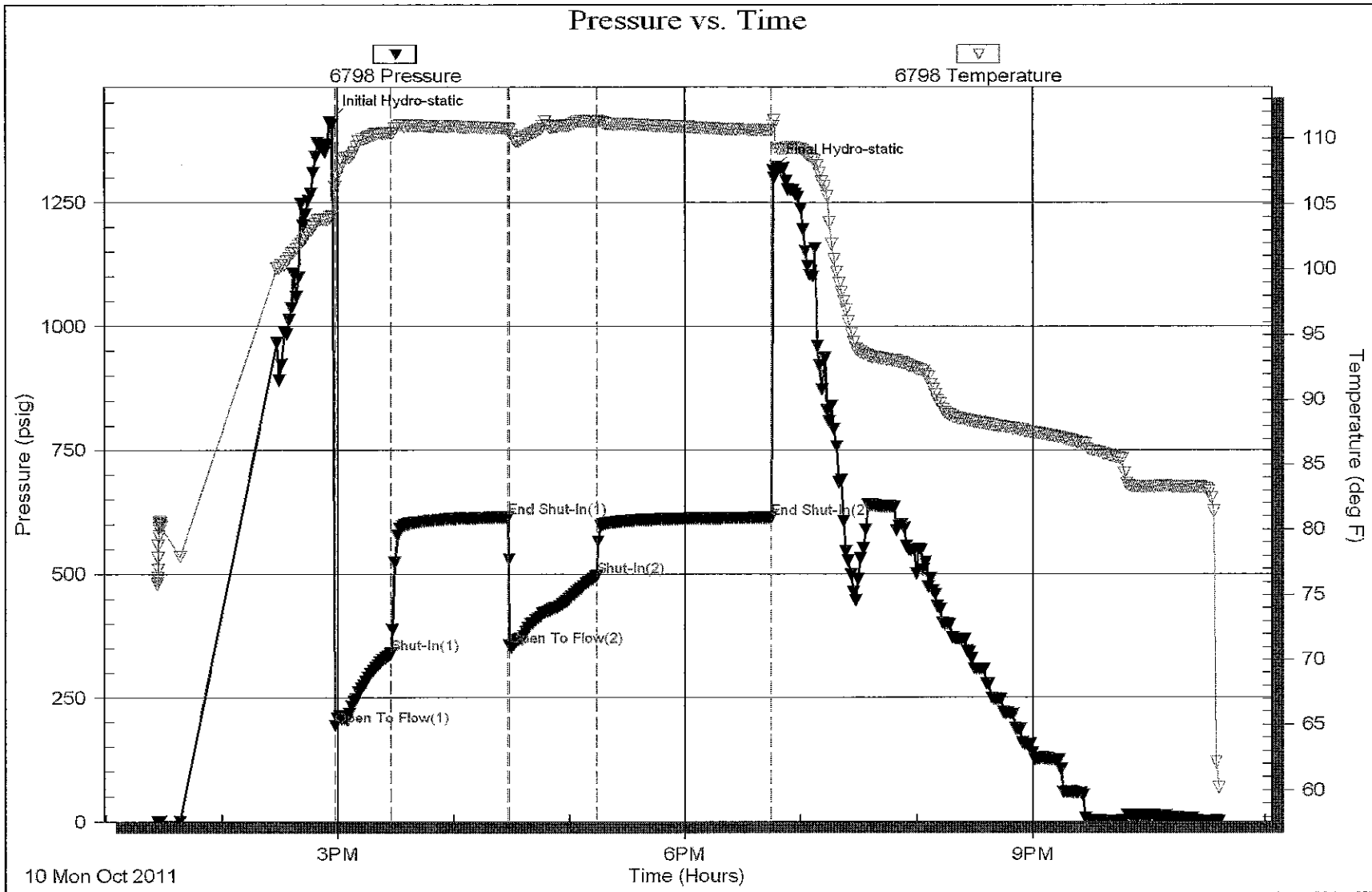
Test Start: 2011.10.10 @ 13:26:20

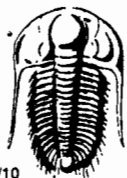
Gas Rates Information

Temperature: 59 (deg F)
Relative Density: 0.65
Z Factor: 0.8

Gas Rates Table

Flow Period	Elapsed Time	Choke (inches)	Pressure (psig)	Gas Rate (Mcf/d)
1	15	0.25	7.00	33.95
1	20	0.25	7.00	33.95
1	30	0.25	6.00	32.36
2	30	0.25	5.00	30.78
2	40	0.25	4.00	29.19





TRILOBITE TESTING INC.

P.O. Box 1733 • Hays, Kansas 67601

001 18 200

Test Ticket

NO. 43994 16432

Well Name & No. Bartel Trust 1-6 Test No. 1 Date 10/10/11
 Company American Energies corporation Elevation 1573 KB 1564 GL
 Address 155 N. Market Ste 710 Wichita, KS 67202
 Co. Rep / Geo. Dave Goldak Rig C+G Rig 2
 Location: Sec. 6 Twp. 19S Rge. 1E Co. Marion State KS

Interval Tested ~~2846~~ 2846-2892 Zone Tested Mississippi
 Anchor Length 46 Drill Pipe Run 2555 Mud Wt. 9.2
 Top Packer Depth 2841 ~~2839~~ Drill Collars Run 270 Vis 36
 Bottom Packer Depth 2846 ~~2844~~ Wt. Pipe Run 0 WL 10.8
 Total Depth 2892 Chlorides 1800 ppm System LCM 3II

Blow Description IF: Strong Blow, BOB in 1 minute, GTS in 11 minutes, Gaged Gas & caught Sample
ISI: Blowback Built to BOB in 8 minutes
FF: Strong Blow, BOB in 30 seconds, GTS Immediate, Gaged Gas
FSI: Blowback Built to BOB in 6 minutes

Rec	Feet of	%gas	%oil	%water	%mud
1323	GIP				
1197	GSY Oil	10	90		
120	MWCO		60	30	10
180	Water				
Rec Total	1497	BHT	110	Gravity	30.4

API RW .09 @ 65 °F Chlorides 98000 ppm

(A) Initial Hydrostatic <u>1411</u>	<input checked="" type="checkbox"/> Test <u>1125</u>	T-On Location <u>12:00</u>
(B) First Initial Flow <u>193</u>	<input checked="" type="checkbox"/> Jars <u>250</u>	T-Started <u>13:26</u>
(C) First Final Flow <u>340</u>	<input checked="" type="checkbox"/> Safety Joint <u>75</u>	T-Open <u>14:58</u>
(D) Initial Shut-In <u>613</u>	<input type="checkbox"/> Circ Sub	T-Pulled <u>18:44</u>
(E) Second Initial Flow <u>356</u>	<input checked="" type="checkbox"/> Hourly Standby <u>1.5 hrs 150</u>	T-Out <u>22:36</u>
(F) Second Final Flow <u>496</u>	<input checked="" type="checkbox"/> Mileage <u>(210) 294</u>	Comments
(G) Final Shut-In <u>613</u>	<input type="checkbox"/> Sampler	
(H) Final Hydrostatic <u>1315</u>	<input type="checkbox"/> Straddle	<input type="checkbox"/> Ruined Shale Packer
Initial Open <u>30</u>	<input type="checkbox"/> Shale Packer	<input type="checkbox"/> Ruined Packer
Initial Shut-In <u>60</u>	<input type="checkbox"/> Extra Packer	<input type="checkbox"/> Extra Copies
Final Flow <u>45</u>	<input type="checkbox"/> Extra Recorder	Sub Total <u>0</u>
Final Shut-In <u>90</u>	<input type="checkbox"/> Day Standby	Total <u>1894</u>
	<input type="checkbox"/> Accessibility	MP/DST Disc't
	Sub Total <u>1894</u>	

Approved By [Signature] Our Representative [Signature]

TriLOBITE TESTING Inc. shall not be liable for damaged of any kind of the property or personnel of the one for whom a test is made, or for any loss suffered or sustained, directly or indirectly, through the use of its equipment, or its statements or opinion concerning the results of any test, tools lost or damaged in the hole shall be paid for at cost by the party for whom the test is made.

