

October 18, 1977

GEOLOGICAL WELL REPORT

Brunson-Spines, Inc. & Magnum Land Corp.
#1 Hunter, SW SW SW - Wildcat
Section 14-T19S-R14E, Coffey County, Kansas
Contractor: Alco Drilling Co., Inc.
Spud: October 5, 1977
7" Surface Casing @ 40'
Rotary Completion: October 14, 1977
Total Depth: Rotary 1960'
GRN Log to 1954'

BRUNSON-SPINES, INC.
615 Fourth Financial Center
Wichita, Kansas 67202

Gentlemen:

Listed below are the pertinent geological tops and an evaluation of the porosities encountered. No drill stem tests were taken but the hole was logged mechanically before being abandoned.

I arrived at the location at a depth of 1270' and witnessed the drilling from that point to TD 1960'. Samples were examined from 850-1960' TD.

Enclosed herewith is a copy of the plotted drilling time log from 200-1960' TD which also includes lithology, porous zones, tops, and other pertinent data.

GRN LOG TOPS

ELEVATION	1153 GL (Private Elevation)
HEEBNER	357 (+ 796)
DOUGLAS	382 (+ 771)
LANSING	715 (+ 438)
KANSAS CITY	980 (+ 173)
BASE OF KANSAS CITY	1098 (+ 55)
HEPLER SANDSTONE	1127-47
Sandstone, medium fine, clean, porous, no show.	
PAWNEE	1265 (112)

1998
O. WRIGHT DONATION

October 18, 1977

CHEROKEE	1390 (- 237)
CATTLEMEN ZONE	1486 (- 333)
BARTLESVILLE SANDSTONE ZONE	1572 (- 413)
1624-29 & 1634-40	Sandstone, light gray, very fine, clustered, in part porous, no show, no fluorescence.
MISSISSIPPIAN LIMESTONE	1760 (- 607)
1867-80	Dolomite, red-brown, sucrosic. Good cavernous porosity, no show, no fluorescence.
TOTAL DEPTH:	1960 (Rotary)
	Logged in drill pipe to 1954' G.L.

Conclusions and Recommendations

This hole was drilled primarily as a Bartlesville Sand prospect, an attempt to extend the Last Chance Pool to the southwest. As expected, the subject well checks considerably lower than the Last Chance Pool about 3 miles northeast and is about flat with a dry hole in Section 21 about 1 3/4 miles southwest. The condemning feature of this test is the lack of Bartlesville Sand development. No reservoir exists in this portion of the geologic section.

Since the well checked relatively low structurally and no "shows" were observed, it was recommended abandoned as a dry hole.

Yours very truly,

T. G. Wright

TGW:wlr

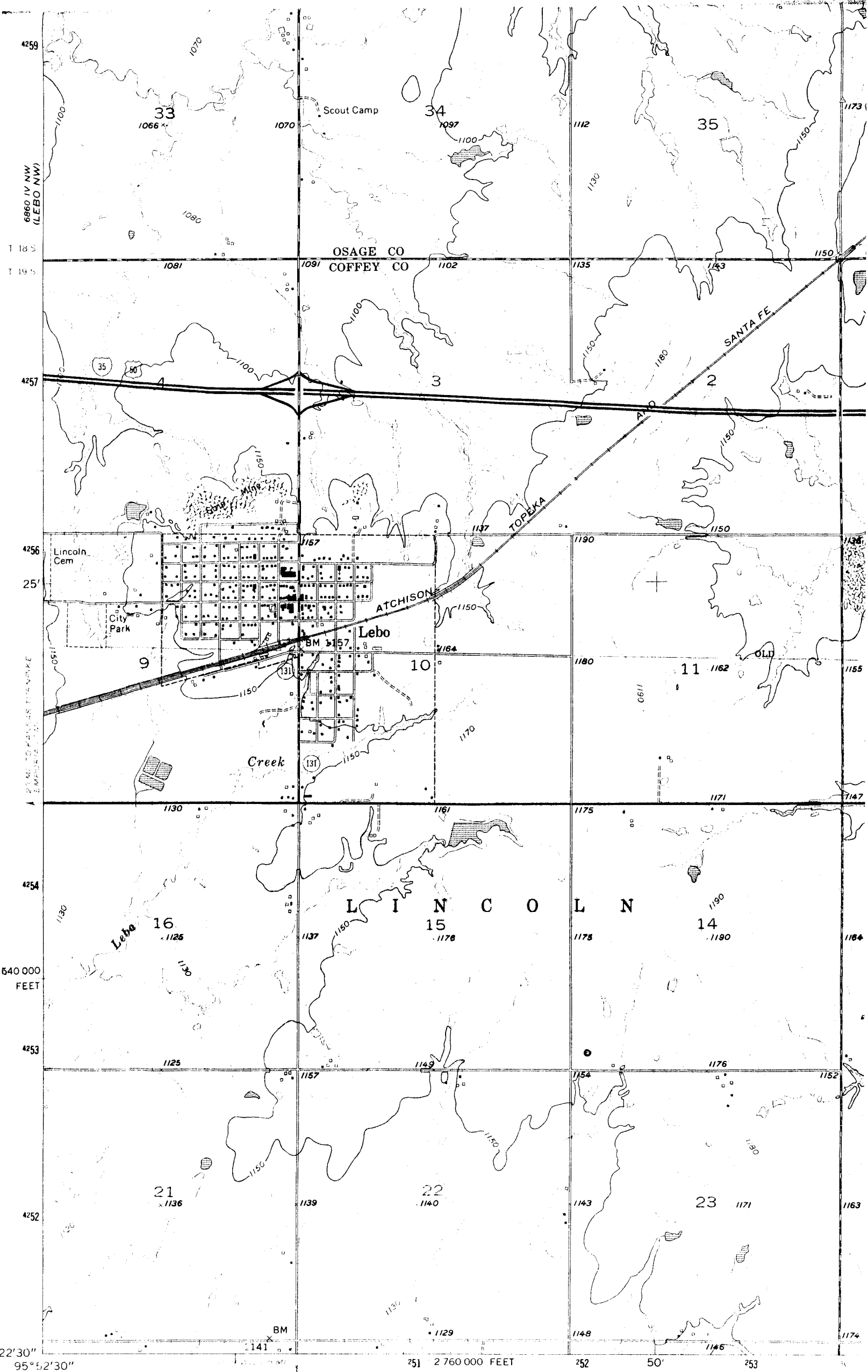
BIT RECORD

SMITH
SMITH

F2 (Rerun) 40 - 1762
F3 1762 - 1960 TD

DRILLING PROGRESS

10/5/77	Spud	
10/6	155	Work on rig
10/7		Work on rig
10/8	376	
10/9	1117	
10/10		Repair rig
10/11		Repair rig
10/12	1117	" "
10/13	1626	
10/14	1960	TD D&A.



Mapped, edited, and published by the Geological Survey
 in cooperation with State of Kansas agencies

★ MN