

OILFIELD RESEARCH LABORATORIES

536 NORTH HIGHLAND - CHANUTE, KANSAS 66720 - PHONE (316) 431-2650

April 1, 1982

Conti Oil Corporation
P. O. Box 24
Chanute, Kansas 66720

Gentlemen:

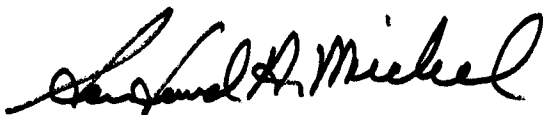
Enclosed herewith are the results of tests run on the rotary core taken from the Dudley Lease, Well No. 25, located in Neosho County, Kansas.

The core was sampled and sealed in plastic bags by a representative of the client and was submitted to our laboratory on March 30, 1982.

Your business is greatly appreciated.

Very truly yours,

OILFIELD RESEARCH LABORATORIES



Sanford A. Michel

SAM/kas

5 c to Chanute, Kansas

Oilfield Research Laboratories

GENERAL INFORMATION & SUMMARY

Company Conti Oil Corporation Lease Dudley Well No. 25
 Location 3465' EWL & 825' NSL, SE $\frac{1}{4}$
 Section 24 Twp. 29S Rge. 17E County Neosho State Kansas

Elevation, Feet	
Name of Sand.....	Bartlesville
Top of Core	873.0
Bottom of Core	895.3
Top of Sand	873.0
Bottom of Sand	893.0
Total Feet of Permeable Sand	17.9

Distribution of Permeable Sand: Permeability Range Millidarcys	Feet	Cum. Ft.
0 - 4	5.0	5.0
4 - 9	3.5	8.5
14 - 37	5.4	13.9
60 - 100	4.0	17.9

Average Permeability Millidarcys	26.5
Average Percent Porosity	17.2
Average Percent Oil Saturation	28.5
Average Percent Water Saturation.....	44.8
Average Oil Content, Bbls./A. Ft.	382.
Total Oil Content, Bbls./Acre.....	6,835.

OILFIELD RESEARCH LABORATORIES

LOGName Conti Oil Corporation Lease Dudley Well No. 25

<u>Depth Interval, Feet</u>	<u>Description</u>
873.0 - 877.0	Light brown shaly sandstone with fine gray shale partings.
877.0 - 878.0	Light brown slightly shaly sandstone with scattered gray shale partings.
878.0 - 878.6	Brown sandstone.
878.6 - 879.0	Grayish brown very shaly sandstone.
879.0 - 880.5	Light brown slightly shaly sandstone with gray shale partings.
880.5 - 881.0	Light brown sandstone with gray shale partings.
881.0 - 884.0	Light brown sandstone.
884.0 - 887.0	Light brown sandstone with scattered fine gray shale partings.
887.0 - 887.5	Gray shale.
887.5 - 889.8	Light brown sandstone with scattered fine gray shale partings.
889.8 - 890.3	Gray and brown laminated shale and sandstone.
890.3 - 890.5	Brown very shaly sandstone.
890.5 - 891.2	Gray and brown laminated shale and sandstone.
891.2 - 893.0	Brown shaly sandstone with scattered fine gray shale partings.
893.0 - 895.3	Gray slightly sandy shale.

RESULTS OF SATURATION & PERMEABILITY TESTS

TABLE 1-B

Sample No.	Depth, Feet	Effective Porosity Percent	Percent Saturation			Oil Content Bbls. / A Ft.	Perm., Mill.	Feet of Sand		Total Oil Content	Perm. Capacity Ft. X md.
			Oil	Water	Total			Ft.	Cum. Ft.		
1	873.4	12.7	11	83	94	108	1.1	1.0	1.0	108	1.10
2	874.3	18.0	20	49	69	279	3.9	1.0	2.0	279	3.90
3	875.4	17.8	18	52	70	249	5.0	1.0	3.0	249	5.00
4	876.5	16.3	29	51	80	367	3.3	1.0	4.0	367	3.30
5	877.6	17.8	25	53	78	345	8.2	1.0	5.0	345	8.20
6	878.5	16.2	33	38	71	415	28.	0.6	5.6	249	16.80
7	879.3	17.4	29	46	75	392	7.1	1.5	7.1	588	10.65
8	880.6	18.1	25	48	73	351	14.	0.5	7.6	176	7.00
9	881.4	19.1	34	29	63	504	99.	1.0	8.6	504	99.00
10	882.5	18.2	29	33	62	410	87.	1.0	9.6	410	87.00
11	883.4	18.3	36	25	61	511	62.	1.0	10.6	511	62.00
12	884.4	20.5	26	57	83	414	27.	1.0	11.6	414	27.00
13	885.4	18.3	32	40	72	454	60.	1.0	12.6	454	60.00
14	886.5	18.5	32	50	82	459	15.	1.0	13.6	459	15.00
15	887.6	16.3	37	28	65	468	25.	0.8	14.4	374	20.00
16	888.4	16.6	25	41	66	322	36.	0.5	14.9	161	18.00
17	889.5	15.7	36	32	68	439	27.	1.0	15.9	439	27.00
18	890.4	17.7	19	54	73	261	0.89	0.2	16.1	52	0.18
19	891.5	14.4	34	35	69	380	3.1	0.8	16.9	304	2.48
20	892.3	15.3	33	50	83	392	1.5	1.0	17.9	392	1.50

Company Conti Oil CorporationLease DudleyWell No. 25

Oilfield Research Laboratories

SUMMARY OF PERMEABILITY & SATURATION TESTS

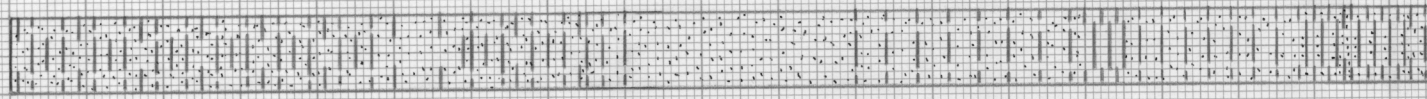
TABLE III

Company	Lease	Well No.					
Conti Oil Corporation	Dudley						
Depth Interval, Feet	Feet of Core Analyzed	Average Permeability, Millidarcys	Permeability Capacity Ft. x Md.	Average Percent Porosity	Average Water Saturation	Average Oil Content Bbl./A. Ft.	Total Oil Content Bbls./Acre
873.0 - 878.0	5.0	4.3	21.50	16.5	20.6	270	1,348
878.0 - 889.8	10.9	41.2	449.45	17.9	31.5	435	4,739
890.3 - 893.0	2.0	2.1	4.16	15.2	32.0	374	748
873.0 - 893.0	17.9	26.5	475.11	17.2	28.5	382	6,835

— PERMEABILITY, IN MILLIDARCYS

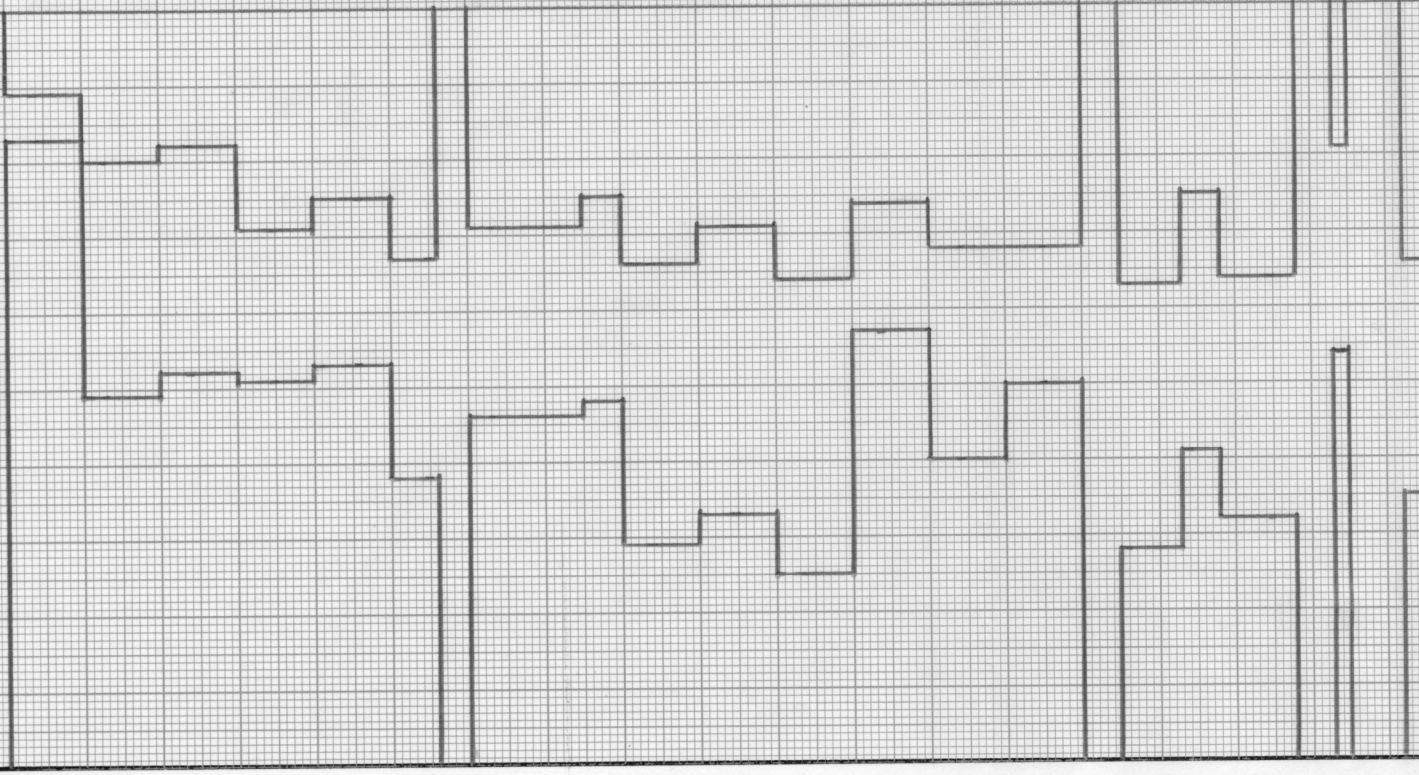
100
80
60
40
20

873 874 875 876 877 878 879 880 881 882 883 884 885 886 887 888 889 890 891



WATER SAT., PERCENT → ← OIL SAT., PERCENT

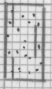
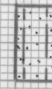
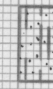
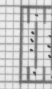
90 20 70 40 50 60 30 80 10



891
892
893
895

KEY:

 SANDSTONE
 SHALE
 SANDY SHALE

 SHALY SANDSTONE
 SANDSTONE WITH SHALE PARTINGS
 SHALY SANDSTONE WITH SHALE PARTINGS
 LAMINATED SANDSTONE AND SHALE

CONTI OIL CORPORATION

DUDLEY LEASE

WELL NO. 25

NEOSHO COUNTY, KANSAS

DEPTH INTERVAL, FEET	FEET OF CORE ANALYZED	AVERAGE PERCENT POROSITY	AVG. OIL SATURATION PERCENT	AVG. WATER SATURATION PERCENT	AVERAGE PERMEABILITY, MILLIDARCS
-------------------------	--------------------------	--------------------------------	-----------------------------------	-------------------------------------	--

873.0 - 878.0	5.0	16.5	20.6	57.6	4.3
878.0 - 889.8	10.9	17.9	31.5	39.0	41.2
890.3 - 893.0	2.0	15.2	32.0	44.4	2.1
873.0 - 893.0	17.9	17.2	28.5	44.8	26.5

OILFIELD RESEARCH LABORATORIES
 CHANUTE, KANSAS
 APRIL, 1982 PDC