

WELL LOG BUREAU - KANSAS GEOLOGICAL SOCIETY

UNION NATIONAL BANK BLDG, WICHITA, KANSAS

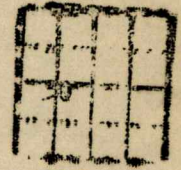
Location NW NE SW
330' S 990' W Cen Sec.

Sec. 30 T. 20 R. 4E.

Casing Record

County- Marion.

10" 1846 Fam- Blankley No. 1
20" 8 1/2" 2360 Company- Empire Oil & Ref. Co.
15 1/2" 178 65/8" 2607 Contr.- F. C. Lawrence.
12 1/2" 124753/16" Comm.- 12/29/28. Comp.- 2/3/29.
Total Depth 2684'. Shot Quarts Between
Correspondence Regarding This Well Should Be Referred to



Elevation 1377

Figures Indicate Bottom of Formations.
Date Issued. 2/16/1929.

Initial Production Dry.

Formation	Depth	Formation	Depth	Formation	Depth.
soil	5	shale	915	red rock	1785
lime	20	lime	925	lime	1793
shale	30	shale	940	slate	1835
red rock	40	lime	950	lime	1845
shale	75	shale	965	slate	1855
lime 1 1/8 BW 80'	85	lime	990	lime	2025
slate	100	slate	995	slate	2065
red rock	120	lime	1000	lime	2085
lime	155	shale	1015	shale and lime	2100
slate	165	lime	1040	lime	2110
lime	255	shale	1080	lime	2140
shale	265	lime	1085	slate	2145
red rock	275	shale	1115	lime S.O.2150-55	2180
lime	290	lime	1130	shale	2182
slate	320	shale	1170	lime	2200
lime	340	lime	1200	slate	2205
shale	355	shale	1250	lime	2210
lime	370	lime	1280	slate	2220
slate	395	slate	1290	lime H.C.	2235
shale	415	lime	1300	slate	2265
lime	460	shale	1340	lime 1 1/8 BW 2270	2270
slate shells	495	lime	1345	sand	2275
red rock	505	shale	1350	slate	2300
lime	510	lime	1380	lime	2340
slate	530	slate	1390	shale	2342
lime	550	lime	1400	green shale	2347
shale	570	shale	1420	lime	2355
lime	625	lime	1435	shale	2358
shale	635	shale	1445	sand shell	2366
lime sand	660	lime	1460	red rock & shale	2368
shale 1BW 650	665	shale	1465	chert 1BW 2401-07	2418
lime	695	lime 2BW 1498	1495	red rock	2425
slate	710	sdv lime	1505	shale	2608
shale	735	sdv shale	1515	lime	2626
lime	740	shale	1550	shale	2628
slate	770	lime	1590	Viola lime HFW	2684 TD
lime	780	shale	1605		
shale	800	lime	1620		
red rock	805	shale 4BW	1690		
shale	850	sand	1705		
slate	855	shale	1715		
lime	865	slate	1765		
slate	895	lime	1770		
lime	900	shale	1780		

2608
1377
1231