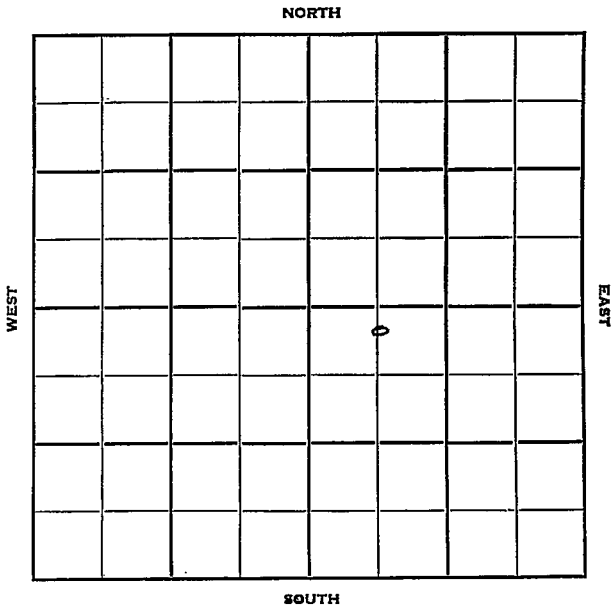


Section 17 Township 21 Range 4E

Well No. #32 Reamey

Company Cooperative Refinery Ass'n



Marion

KANSAS

Sec. 17 Twp. 21 R. 1E 1

Well No. #32 Reamey Farm

Cooperative Refinery Ass'n. Company

Uhl. Contractor

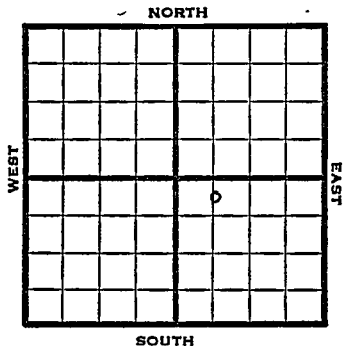
200 Ft. from N. Line

Ft. from S. Line

Ft. from E. Line

685 Ft. from W. Line

N/2 NW SE



1951

Elev. 1378' REPORT

11/14

Spud 11-7-51
8" @ 118
Drlg.

12/19

Spud 11-7-51
Oil well TD 2418' 8" @ 118'
KC 2010' Kh. 2292' Hunton 2412-18'
5" @ 2414 CO to 2418'
Comp. 85 BOPD

COMPLETED

County **Marion** State **Kansas**

Sec. **17** (Blk.) **21** (Sur.) **4E** Map No.

Operator **Cooperative Refinery Ass'n**

Well No. **32** Farm **Reamey**

Elev. Location **N/2 NW SE**

FIRST REPORT

200 Ft. From **N** Line **SE**

685 Ft. From **W** Line Quarter

Ist. Report **NOV 14 1951**

Completion

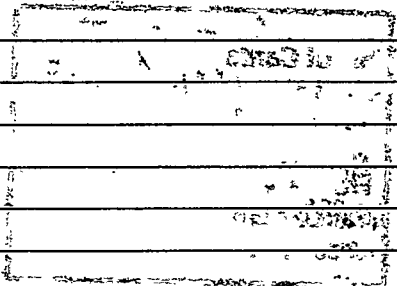
Remarks

Uhl - Contr.

Spudding Date **11-7-51**

Drig. Data

8" @ 118 Drig.



J. E. TYRA

