

GODSEY-EARLOUGHER, INC.

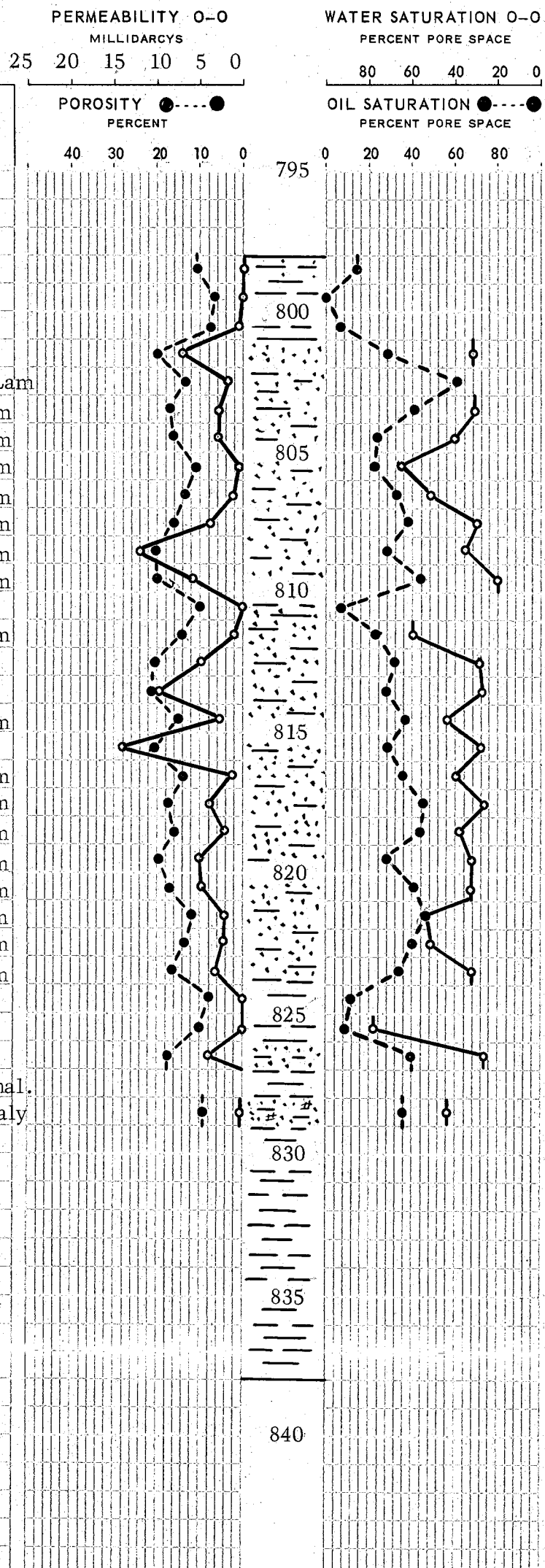
PETROLEUM CONSULTANTS
CORE AND WATER ANALYSIS LABORATORIES

176 89 139

COMPANY Ladd Petroleum Corporation WELL Ware N-14
 LOCATION 1820 NSL, 320 WEL NW/4 Sec 15-21S-20E FORMATION Squirrel
 FIELD _____ DRLG. FLUID Water TYPE CORE 2" Rotary
 COUNTY Anderson STATE Kansas ELEV. _____ DATE 8-23-75
 REMARKS Cored: 798 to 838 feet. Recovered 40 feet.

RESULTS OF CORE ANALYSES

SPLE. NO.	DEPTH FEET	PERM. MD.	POROSITY %	CORE SATURATION % PORE SPACE		REMARKS
				OIL	WATER	
1	798-99	-0-	10.7	14	86	*Sdy shale
2	799-800	-0-	6.7	-0-	100	*Shale
3	800-01	0.6	7.6	6	94	*Shale
4	801-02	7.0	20.0	28	32	Sand
5	802-03	1.7	13.3	61	39	V shly sd, Lam
6	803-04	2.7	17.0	41	31	Shly sd, Lam
7	804-05	2.9	16.3	23	40	Shly sd, Lam
8	805-06	0.4	11.0	22	65	*Shly sd, Lam
9	806-07	1.2	13.4	32	51	Shly sd, Lam
10	807-08	3.8	16.2	38	30	Shly sd, Lam
11	808-09	12.	20.5	28	35	Shly sd, Lam
12	809-10	5.7	20.1	43	20	Shly sd, Lam
13	810-11	-0-	10.0	6	94	*Sh & sd
14	811-12	1.0	14.5	22	59	*Shly sd, Lam
15	812-13	4.8	20.4	31	29	Shly sd
16	813-14	10.	21.0	27	27	Shly sd
17	814-15	2.7	15.0	37	43	Shly sd, Lam
18	815-16	14.	20.4	28	28	Shly sd
19	816-17	1.2	14.3	35	39	Shly sd, Lam
20	817-18	3.9	17.3	45	26	Shly sd, Lam
21	818-19	2.1	15.9	43	38	Shly sd, Lam
22	819-20	5.1	19.6	27	32	Shly sd, Lam
23	820-21	4.7	17.1	41	33	Shly sd, Lam
24	821-22	2.2	11.6	46	54	Shly sd, Lam
25	822-23	2.3	13.4	40	51	Shly sd, Lam
26	823-24	3.2	16.6	34	32	Shly sd, Lam
27	824-25	-0-	8.0	11	89	*Shale
28	825-26	-0-	10.1	9	78	*Shale
29	826-27	4.0	17.6	39	26	Shaly sand
30	827-28	--	--	--	--	Shale, not anal.
31	828-29	0.3	9.3	36	43	*Limy sd, shaly
	829-38	--	--	--	--	Dark shale



*Exclude from average.

SUMMARY

SEC.	FORMATION	Depth, Feet		FEET OF SAND	AVG. PERM.	AVG. POR.	AVG. OIL SAT.	AVG. WATER SAT.	Flood Pot Residual Saturation	
		FROM	TO						OIL	WATER
<u>SQUIRREL</u>	Oil sand	801	827	21	4.6	17.0	37	35		