

September 16, 1950

✓
Deep Rock Oil Corporation
Atlas Life Building
Tulsa, Oklahoma

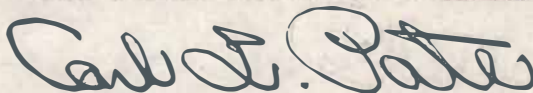
Attention: Mr. T. F. Lavry

Gentlemen:

Attached hereto are the results of permeability and porosity tests made on the Cable Tool core taken from your Pugsley Lease, Well No. 7-A, Anderson County, Kansas and submitted to our laboratory on September 11, 1950.

Very truly yours

OIL FIELD RESEARCH LABORATORIES



Carl L. Pate

CLP:sm

C.C. to Mr. Jack McQueeney
Mr. Neil Henderson



OIL FIELD RESEARCH LABORATORIES

LOG

Company Deen Hook Oil Corporation Lease Paraly Well No. 7-A

<u>Depth Interval,</u> <u>Feet</u>	<u>Description</u>
792.50 - 792.77	- Brown fine grained micaceous sandstone.
792.77 - 792.95	- Laminated sandy shale.
792.95 - 793.15	- Brown fine grained micaceous sandstone.
793.15 - 793.25	- Gray sandy shale.
793.25 - 793.50	- Brown fine grained micaceous sandstone.
793.50 - 794.25	- Gray shale.
794.25 - 794.42	- Gray sandy shale.
794.42 - 794.90	- Brown fine grained micaceous sandstone.
794.90 - 795.26	- Gray sandy shale.
795.26 - 795.50	- Brown fine grained micaceous shaley sandstone.
795.50 - 795.75	- Laminated sandstone and shale.
795.75 - 796.05	- Brown fine grained laminated micaceous shaley sandstone.
796.05 - 796.73	- Brown fine grained micaceous sandstone.
796.73 - 797.22	- Brown fine grained micaceous sandstone.
797.22 - 797.40	- Gray shale.
797.40 - 798.75	- Brown fine grained micaceous slightly shaley sandstone.
798.75 - 799.20	- Laminated sandstone and shale.
799.20 - 799.30	- Brown fine grained micaceous sandstone.
799.30 - 799.65	- Laminated sandstone and shale.
799.65 - 801.41	- Brown fine grained micaceous slightly shaley sandstone.
801.41 - 802.65	- Laminated sandstone and shale.
802.65 - 803.20	- Brown fine grained micaceous sandstone.
803.20 - 803.52	- Gray shale.
803.52 - 804.70	- Brown fine grained micaceous slightly shaley sandstone.

- 804.70 - 805.20 - Laminated sandy shale.
- 805.20 - 805.55 - Brown fine grained micaceous sandstone.
- 805.55 - 806.13 - Finely laminated sandstone and shale.
- 806.13 - 806.23 - Brown fine grained micaceous sandstone.
- 806.23 - 806.40 - Gray shale.
- 806.40 - 806.71 - Brown fine grained micaceous sandstone.
- 806.71 - 807.20 - Gray sandy shale.
- 807.20 - 807.35 - Brown fine grained micaceous sandstone.
- 807.35 - 807.50 - Gray sandy shale.
- 807.50 - 807.88 - Brown fine grained micaceous sandstone.
- 807.88 - 809.10 - Gray shale.
- 809.10 - 809.30 - Brown fine grained micaceous sandstone.
- 809.30 - 809.58 - Gray shale.
- 809.58 - 810.03 - Brown fine grained micaceous sandstone.
- 810.03 - 811.10 - Gray shale.
- 811.10 - 811.55 - Brown fine grained micaceous sandstone.
- 811.55 - 811.70 - Finely laminated sandstone and shale.
- 811.70 - 812.28 - Brown fine grained micaceous sandstone.
- 812.28 - 812.47 - Gray sandy shale.
- 812.47 - 813.00 - Brown fine grained micaceous sandstone.
- 813.00 - 813.50 - Laminated sandy shale.
- 813.50 - 813.93 - Gray shale.
- 813.93 - 814.50 - Brown fine grained micaceous sandstone.
- 814.50 - 814.85 - Light brown fine grained laminated micaceous shaley sandstone.
- 814.85 - 817.60 - Brown fine grained micaceous sandstone.
- 817.60 - 818.00 - Brown fine grained micaceous slightly shaley sandstone.
- 818.00 - 818.37 - Brown fine grained micaceous sandstone.
- 818.37 - 820.45 - Gray shale.

820.45 - 820.87 - Brown fine grained micaceous sandstone.

820.87 - 821.05 - Gray shale.

821.05 - 821.20 - Brown fine grained micaceous sandstone.

821.20 - 822.33 - Gray shale.

822.33 - 822.60 - Hard, light brown fine grained micaceous calcareous sandstone.

822.60 - 823.30 - Gray sandy calcareous shale (bottom of core received in the laboratory).

823.30 - 825.50 - Loss.

Oil Field Research Laboratories
RESULTS OF PERMEABILITY TESTS
TABLE I

Company Deep Rock Oil Corporation Lease Puzosley Well No. 7A

Sample No.	Depth, Feet	Permeability Millidarcys	Feet of Core		Permeability Capacity Ft. x Md.
			Ft.	Cum. Ft.	
1	792.60	14.	0.27	0.27	3.78
2	793.10	13.	0.20	0.47	2.60
3	793.40	Imp.	0.25	0.72	0.00
4	794.45	17.	0.48	1.20	8.16
5	795.45	9.4	0.24	1.44	2.26
6	795.95	5.5	0.30	1.74	1.65
7	796.55	12.	0.68	2.42	8.16
8	797.05	5.7	0.49	2.91	2.79
9	797.45	2.7	0.35	3.26	0.95
10	798.00	3.3	0.45	3.71	1.49
11	798.40	8.5	0.35	4.06	2.98
12	799.25	14.	0.10	4.16	1.40
13	799.85	15.	0.45	4.61	6.75
14	800.40	7.9	0.55	5.16	4.35
15	800.85	5.3	0.45	5.61	2.39
16	801.35	14.	0.31	5.92	4.34
17	802.80	14.	0.55	6.47	7.70
18	803.60	3.4	0.28	6.75	0.95
19	804.00	2.8	0.50	7.25	1.40
20	804.65	5.1	0.40	7.65	2.04
21	805.30	14.	0.35	8.00	4.90
22	806.15	36.	0.10	8.10	3.60
23	806.60	4.2	0.31	8.41	1.30
24	807.30	4.0	0.15	8.56	0.60
25	807.65	6.6	0.38	8.94	2.51
26	809.15	8.7	0.20	9.14	0.74
27	809.90	Imp.	0.45	9.59	0.00
28	811.25	24.	0.44	10.04	10.80
29	811.85	7.8	0.58	10.62	4.52
30	812.50	3.3	0.23	10.85	1.22
31	812.85	4.8	0.30	11.15	1.44
32	814.00	4.6	0.27	11.42	1.26
33	814.40	8.0	0.30	11.72	2.40
34	814.95	4.6	0.35	12.07	1.61
35	815.40	9.5	0.40	12.47	3.80
36	815.80	11.	0.45	12.92	4.99
37	816.30	12.	0.45	13.37	5.40
38	816.75	11.	0.50	13.87	5.50
39	817.15	8.0	0.60	14.47	4.80
40	817.85	3.8	0.40	14.87	1.52
41	818.25	11.	0.37	15.24	4.07
42	820.60	23.	0.42	15.66	9.66

OIL FIELD RESEARCH LABORATORIES

RESULTS OF POROSITY TESTS

TABLE II

COMPANY Deep Rock Oil Corporation LEASE Parley WELL NO. 7-A

<u>Sample No.</u>	<u>Depth, Feet</u>	<u>Porosity, Percent</u>
1	792.60	20.6
2	793.10	20.7
4	794.44	21.0
5	795.45	20.8
6	795.95	19.4
7	796.55	21.2
8	797.05	17.7
9	797.45	20.0
10	798.00	19.6
11	798.40	19.4
12	799.25	21.9
13	799.85	21.7
14	800.40	21.2
15	800.87	19.0
16	801.35	20.7
17	802.80	20.3
18	803.60	18.7
19	804.00	19.2
20	804.65	19.1
21	805.30	21.4
22	806.15	18.9
23	806.60	18.9
24	807.30	17.7
25	807.65	19.3
26	809.15	18.2
28	811.25	20.0
29	811.84	20.2
30	812.50	19.1
31	812.85	18.3
32	814.00	19.1
33	814.40	19.2
34	814.96	15.7
35	815.40	19.0
36	815.80	18.1
37	816.30	18.3
38	816.75	17.8
39	817.15	16.9
40	817.85	16.9
41	818.23	18.2
42	820.60	16.8

OIL FIELD RESEARCH LABORATORIES
SUMMARY OF PERMEABILITY & POROSITY TESTS

TABLE III

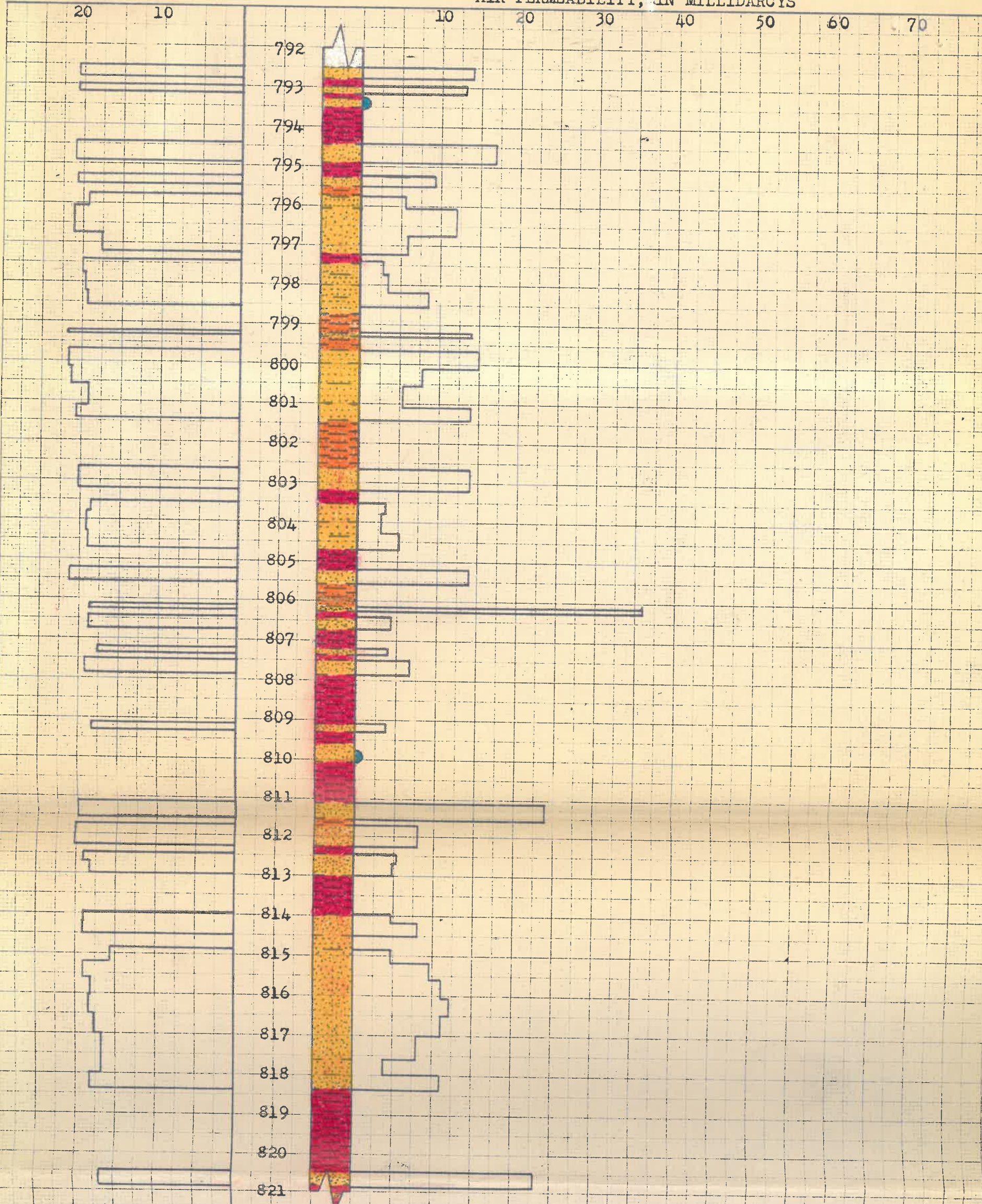
<u>COMPANY</u> <u>Deep Rock Oil Corporation</u>	<u>LEASE</u> <u>Purkey</u>	<u>WELL NO.</u> <u>7-A</u>
Depth Interval, Feet - - - - -	792.50 -	820.87
Feet of Core Analyzed - - - - -		14.96
Average Permeability, Millidarcys - - - - -		9.54
Permeability Capacity, Ft. x Md. - - - - -		142.72
Average Percent Porosity - - - - -		19.20

PERCENT POROSITY

AIR PERMEABILITY, IN MILLIDARCYS

20 10

10 20 30 40 50 60 70



KEY:



SANDSTONE
 CALCAREOUS SANDSTONE
 SHALEY SANDSTONE
 IMPERMEABLE TO AIR



LAMINATED SANDSTONE AND SHALE
 SHALE
 SANDY SHALE

DEEP ROCK OIL CORPORATION

PUGSLEY LEASE

ANDERSON COUNTY, KANSAS

WELL NO. 7A

OIL FIELD RESEARCH LABORATORIES
 CHANUTE, KANSAS
 SEPTEMBER 16, 1950.