

WELL COMPLETION REPORT AND  
DRILLER'S LOG

API No. 15 — 107 — 21,013  
County Number

Operator  
L&L Enterprises, Inc.

Address  
P.O. BOX 85 Derby, Kansas 67037

Well No. 4 Lease Name  
Florence Gorrell

Footage Location  
515 feet from (S) line 1,130 feet from (W) line of SW 1/4

Principal Contractor  
Exploration, Inc. Geologist

Spud Date 3-28-81 Date Completed 3-30-81 Total Depth 487 P.B.T.D.

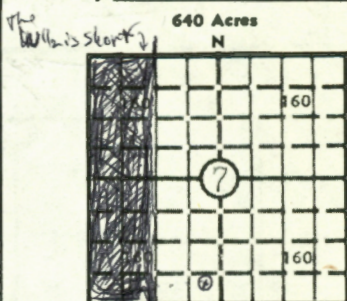
Directional Deviation Oil and/or Gas Purchaser

SEP  
S. 7 T. 21 R. 22 (E)

Loc. 515' Isl & 1130'

1/4 of the SW 1/4

County Linn



Elev.: Gr. +899

DF \_\_\_\_\_ KB \_\_\_\_\_

CASING RECORD

Report of all strings set — surface, intermediate, production, etc.

Purpose of string	Size hole drilled	Size casing set (in O.D.)	Weight lbs/ft.	Setting depth	Type cement	Sacks	Type and percent additives
Surface	7 7/8	6	17	22	Portland	5	

LINER RECORD

PERFORATION RECORD

Top, ft.	Bottom, ft.	Sacks cement	Shots per ft.	Size & type	Depth interval

TUBING RECORD

Size	Setting depth	Packer set at

ACID, FRACTURE, SHOT, CEMENT SQUEEZE RECORD

Amount and kind of material used	Depth interval treated


INITIAL PRODUCTION

Date of first production	Producing method (flowing, pumping, gas lift, etc.)			
RATE OF PRODUCTION PER 24 HOURS	Oil	Gas	Water	Gas-oil ratio
	bbls.	MCF	bbls.	CFPB
Disposition of gas (vented, used on lease or sold)			Producing interval (s)	

INSTRUCTIONS: As provided in KCC Rule 82-2-125, within 90 days after completion of a well, one completed copy of this Drillers Log shall be transmitted to the State Geological Survey of Kansas, 4150 Monroe Street, Wichita, Kansas 67209. Copies of this form are available from the Conservation Division, State Corporation Commission, 245 No. Water, Wichita, Kansas 67202. Phone AC 316-522-2206. If confidential custody is desired, please note Rule 82-2-125. Drillers Logs will be on open file in the Oil and Gas Division, State Geological Survey of Kansas, Lawrence, Kansas 66044.

Operator L&L Enterprises, Inc. DESIGNATE TYPE OF COMP.: OIL, GAS, DRY HOLE, SWDW, ETC.:

Well No. 4 Lease Name Florence Gorrell Dry Hole

S 7 T 21 R 22 

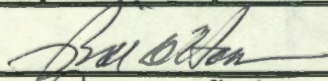
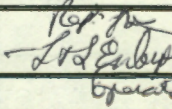
**WELL LOG**

Show all important zones of porosity and contents thereof; cored intervals, and all drill-stem tests, including depth interval tested, cushion used, time tool open, flowing and shut-in pressures, and recoveries.

SHOW GEOLOGICAL MARKERS, LOGS RUN, OR OTHER DESCRIPTIVE INFORMATION.

FORMATION DESCRIPTION, CONTENTS, ETC.	TOP	BOTTOM	NAME	DEPTH
Clay	0	10		
Ls	10	17		
Sh Blk.	17	25	B/KC	109
Ls	25	65		
Sh Blk.	65	75	Altamont	302
Ls	75	95		
Sh	95	100	Ft. Scott	424
Ls	100	110		
Sh Blk.	110	112	B/Ck. Sh.	471
Ls	112	120		
Sh Blue	120	275		
Sh Blk.	275	280		
Sh. Blue	280	290		
Ls	290	300		
Sh grey	300	308		
Ls	308	310		
Sh Blk.	310	315		
Ls	315	325		
Sh grey	325	363		
Ls	363	375		
Sh grey	375	390		
Ls	390	393		
Sh Blk.	393	395		
Sh grey	395	420		
Ls	420	433		
Sh grey	433	447		
Ls	447	455		
Sh Blk.	455	460		
Sh grey	460	467		
Sh. Blk.	467	473		
Sh. sandy	473	487		

USE ADDITIONAL SHEETS, IF NECESSARY, TO COMPLETE WELL RECORD.

Date Received	
	<u>Mgr. Exploration</u> 
	<u>6/28/57</u>

54945