

KANSAS

State Geological Survey
WICHITA, BRANCH

SEP

Handwritten initials

WELL COMPLETION REPORT AND
DRILLER'S LOG

S. 7 T. 21S R. 22 E
11701st & 1170 fwl
Loc. of the SW $\frac{1}{4}$
County Linn

API No. 15 — 107 — 21,170
County Number

Operator
L&L Enterprises, Inc.

Address
P.O. Box 85 Derby, Kansas 67037

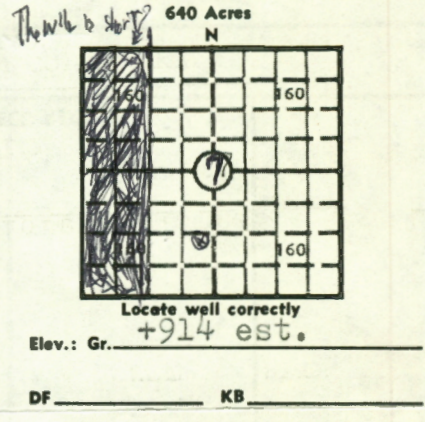
Well No. 5 Lease Name Florence Gorrell

Footage Location
1170 feet from (S) (S) line: 1170 feet from (W) (W) line of SW $\frac{1}{4}$

Principal Contractor Exploration, Inc. Geologist _____

Spud Date 9-14-81 Date Completed 3-29-82 Total Depth 550 P.B.T.D. _____

Directional Deviation _____ Oil and/or Gas Purchaser Maclaskey



CASING RECORD

Report of all strings set — surface, intermediate, production, etc.

Purpose of string	Size hole drilled	Size casing set (in O.D.)	Weight lbs/ft.	Setting depth	Type cement	Sacks	Type and percent additives
Surface	8 3/4	6 1/4	20	21	Portland	5	
Production	5 1/8	2 1/4	3.75	545	"	69	Prem Gel-3 sx.

LINER RECORD

PERFORATION RECORD

Top, ft.	Bottom, ft.	Sacks cement	Shots per ft.	Size & type	Depth interval
			2	11 glass & 1 1/6 alum. jets	498-510

TUBING RECORD

Size	Setting depth	Packer set at

ACID, FRACTURE, SHOT, CEMENT SQUEEZE RECORD

Amount and kind of material used	Depth interval treated
100 sacks sand and 180 bbls. of water	498-510

INITIAL PRODUCTION

Date of first production _____ Producing method (flowing, pumping, gas lift, etc.) pumping

RATE OF PRODUCTION PER 24 HOURS	Oil	Gas	Water	Gas-oil ratio
	App. 3/4 bbls.		MCF App. 1/8 bbls.	

Disposition of gas (vented, used on lease or sold) _____ Producing interval (s) 498-510

INSTRUCTIONS: As provided in KCC Rule 82-2-125, within 90 days after completion of a well, one completed copy of this Drillers Log shall be transmitted to the State Geological Survey of Kansas, 4150 Monroe Street, Wichita, Kansas 67209. Copies of this form are available from the Conservation Division, State Corporation Commission, 245 No. Water, Wichita, Kansas 67202. Phone AC 316-522-2206. If confidential custody is desired, please note Rule 82-2-125. Drillers Logs will be on open file in the Oil and Gas Division, State Geological Survey of Kansas, Lawrence, Kansas 66044.

Operator
L&L Enterprises, Inc.

DESIGNATE TYPE OF COMP.: OIL, GAS, DRY HOLE, SWDW, ETC.:

Well No. 5 Lease Name Florence Gorrell oil

S 7 T 21 R 22 E

WELL LOG

Show all important zones of porosity and contents thereof; cored intervals, and all drill-stem tests, including depth interval tested, cushion used, time tool open, flowing and shut-in pressures, and recoveries.

SHOW GEOLOGICAL MARKERS, LOGS RUN, OR OTHER DESCRIPTIVE INFORMATION.

FORMATION DESCRIPTION, CONTENTS, ETC.	TOP	BOTTOM	NAME	DEPTH
CLay	0	12		
Ls	12	25		
Sh	25	35	B/KC	124
Ls	35	75		
Sh	75	85	Altamont	318
Ls	85	100		
Sh	100	105	Ft. Scott	437
Ls	105	110		
Sh	110	115	B/Ck. Sh.	486
Ls	115	120		
Sh	120	125	Squirrel Sd.	496
Ls	125	130		
Sh	130	320		
Ls	320	330		
Sh	330	380		
Ls	380	392		
Sh	392	404		
Ls	404	410		
Sh	410	440		
Ls	440	450		
Sh	450	462		
Ls	462	472		
Sh	472	496		
Sd. (Oil)	496	512		
Sh	512	550		

Cored: 499-512

USE ADDITIONAL SHEETS, IF NECESSARY, TO COMPLETE WELL RECORD.

Date Received	<i>Burton</i>
	Signature
	Burton Exploration Inc. - Appraiser
	Title
	3-29-82
	Date