

Plotted 0 ✓

14-21-22E

Company Texas

Sec. 14 T. 21 R. 22
Loc. S $\frac{1}{2}$ NW $\frac{1}{4}$, SW $\frac{1}{2}$, NE $\frac{1}{4}$

Farm D.A. Lee

No. 1

Total Depth 461

County Linn

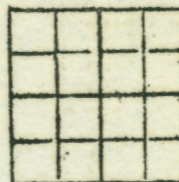
Comm.

Comp. 6/29/20

Shot or Treated

Contractor

Issued



Casing

20 in.	10 in.
15 1-2	8 1-4
12 1-2	6 5-8
13 3-8	5 3-16

Elevation

Production Oil

Figures Indicate Bottom of Formation

Broken Lime, Lt.	Hard	15	Lime, Lt.	Hard	374
Shale, Blk.	Soft	17	Shale Drk.	Soft	377
Lime Lt.	"	37	" Blk.	"	382 (water)
Shale "	"	195	Lime Lt.	Hard	383
Lime Drk.	Hard	203	Shale "	Soft	390
Shale Lt.	Soft	221	" Blk.	"	395
Lime Drk.	Hard	229	" Lt.	"	411
Shale Lt.	Soft	285	Oil Sand Drk.	Med.	451
Lime "	Hard	300	Shale Lt.	Soft	461
Shale "	Soft	310			
Lime "	Hard	316 (water)			
Shale Drk.	Soft	346			
" Lt.	Hard	365			

(Texaco)

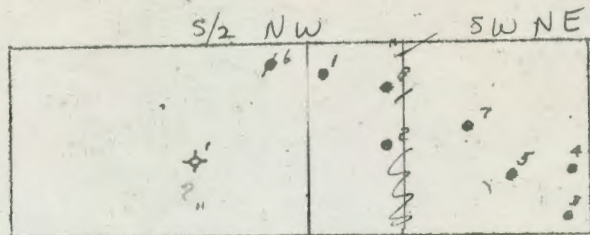
14-215-22E

Southwestern Petroleum Company

D. A. Lee Wells

LINN Co

Page 2



← 1/2-NW & SW-NE
14-21-22

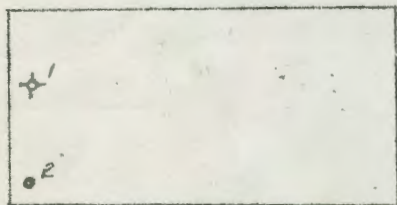
Relative locations

SAND RECORDS

- NW NW SW NE #1 411 - 451
- ↘ approx NW SW NE #2 427 - 463
- SE SE SW NE #3 440-455 gas - 487 oil
- NE NE SW NE #4 426 - 434" - 473"
- NW NW SW NE #5 436 - 443" - 466"
- NE NE SE NW #6 426 429" - 435" 436 shale - 452 oil
- SW NE SW NE #7 363. 370" 404"
- approx NW SW NE #8 376 385" 416"

M. J. Kerr	E. A. Kerr
D. A. Lee	

E. A. Kerr Wells
N 1/2-NE 14-21-22



Relative locations

SAND RECORDS

- NW NW NE #1 411 - 451
- SW NW NE #2 440 - 485

Martha J. Kerr Wells
N 1/2-NW/4 14-21-22



Relative locations

SAND RECORDS

- NW NW NE NW #1 453 - 471 gas - 503 oil
- SE SE NW NE NW #2 411 - 425 gas 429 sh. - 460
- C NE NW #3 440 - 448 bkn. - 469 gas - 472
- CS 1/2 NE NW #4 440 - 455 gas - 477 oil