

20-215-23E

# 2 McGrew

Linn Co.

S. McGrew Hill, 7 1/2 miles N.E. Mans. Sec. 29 T. 21 S. R. 23  
Drilled by Richards & Logan Commenced 1/24/27 completed 2/11/27  
Casing Record --- 8" --- 8' --- 6" --- 6" --- 4 1/2" --- 6"

Dr by Richards & Logan

Comm. 1/24/27

Comp 2/11/1927

Soil		7
lime	light	40
Shale	Dark	45
lime	light	66
Shale	dark	69
lime	light	90
Shale	blue	234
lime	light	244
Shale	blue	263
lime	light	273
Shale	blue	328
lime	light	339
Shale	blue	353
lime	light	358
Shale	dark	388
lime	light	412
Shale	dark	418
Shale	blue	454
Oil	sand	492
Shale	blue	497 T.D.

(gas & water)  
" " " "

KANSAS GEOLOGICAL SOCIETY  
 KANSAS WELL LOG BUREAU - KANSAS WELL SAMPLE BUREAU  
 KANSAS GEOLOGICAL SOCIETY BUILDING  
 508 EAST MURDOCK - WICHITA, KANSAS

COPY

COMPANY RICHARDS & LOGAN

SEC. 20 T. 21 R. 23E  
 LOG.

FARM E. McGrew

NO. 2

TOTAL DEPTH 497'

COMM. 1-24-27

COMP. 2-11-27

COUNTY Linn

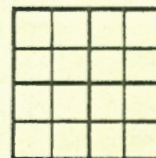
KANSAS

SHOT OR TREATED

CONTRACTOR

ISSUED

20-21-23



CASING

20	10
15	8
12	6
13	5

ELEVATION

PRODUCTION

FIGURES INDICATE BOTTOM OF FORMATIONS

shale	8
lime	40
shale	45
lime	65
shale	70
lime	90
shale	235
lime	245
shale	255
lime	270
shale	325
lime	339
shale	352
lime	358
shale, G. & W.	390
lime, G. & W.	410
shale	452
sand, O.	490
shale	497
Total Depth	

COPIED FROM LOG STRIP.

Run road  
 22-22-24  
 Block 1909

22-23

22-24

21-24

535  
 217  
 318

24

20

21

22

23

25

29

28

27

203

36

32

31

34

35

36

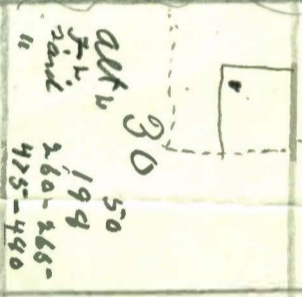
6

5

3

2

1



alt. 160  
 1st part 350  
 sand 430  
 415  
 sand 455  
 455

alt. 195  
 3 3150-190  
 260-255  
 290-300  
 308-334  
 Bottom

alt. 60  
 500-507 917  
 sand 440-908  
 471-75

alt. 290  
 sand 294-367  
 sand 490-505

alt. 150 base  
 sand 300-12  
 sand 492-592 ?