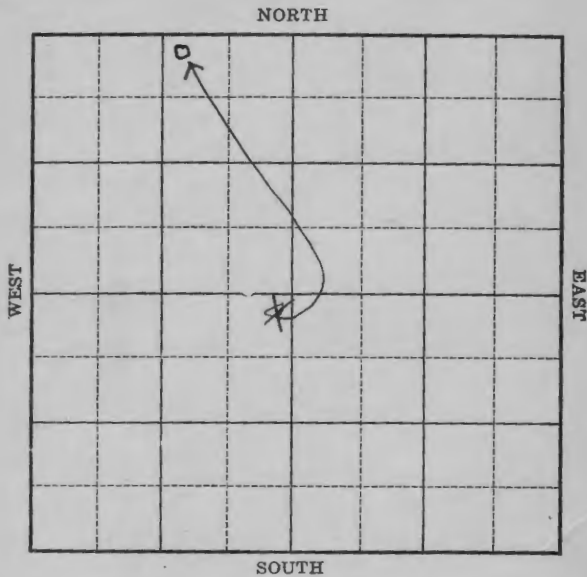


Greenwood Co  
 Map No. Kansas Sec. 4 Twp. 22 R. 12  
 Well No. 1 Frankhouser Farm  
J. K. Simmons et al Company



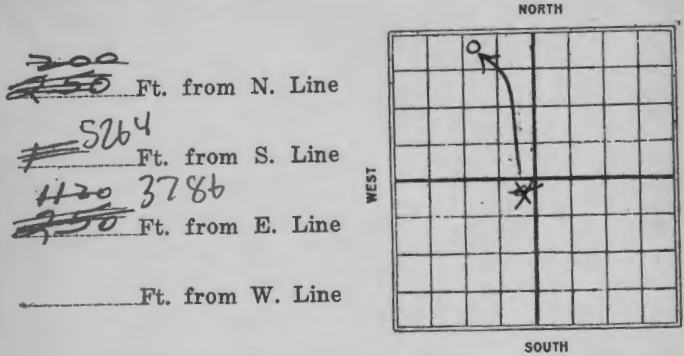
Location \_\_\_\_\_  
 Drilling Remarks \_\_\_\_\_

Rig Up \_\_\_\_\_  
 Drilling Remarks \_\_\_\_\_

**RECORD**  
 Cased \_\_\_\_\_ in. \_\_\_\_\_ ft.  
 Sand \_\_\_\_\_  
 Gas \_\_\_\_\_  
 Oil \_\_\_\_\_  
 Total Depth \_\_\_\_\_

**PRODUCTION**  
 1st 24 hrs. Nat. \_\_\_\_\_  
 1st 24 hrs. after shot \_\_\_\_\_  
 Gas \_\_\_\_\_ cu. ft.  
 Dry Hole \_\_\_\_\_  
 Abandoned \_\_\_\_\_

Greenwood Co  
 Map No. Kansas Sec. 4 Twp. 22 R. 12  
 Well No. 1 Frankhouser Unit 4 Farm  
J. K. Simmons et al Company



Date	REPORT
11/19	Location
11-27	
12/3	machine rigging up.
12/10	
12/17	spudding
12/23	
12/31	S. D. 645'
1926	
1/8	_____
1/14	_____
1/30	_____
2/7	Only 900'
2/11	✓ 1300'
2/10	J.S. 1868' J.D. 1896' filled up 1350' nat. will shoot.
2/17	J.D. now 1899' shot 60 gts. swabbed 368 bbls 1st 24-hrs. oil tests 41.2 grav.
2/24	Sand 1868-1899 60 gts 250 Bbls

1621 Greenwood Co  
Map No. KANSAS Sec. 4 Twp. 22 R. 12  
Well No. 1 Frank Houston Unit 1  
2.5 Simmons et al Company

COMPLETED

SECTION PLAT

200 Ft. from N. Line  
5264 Ft. from S. Line  
H20 3786 Ft. from E. Line  
Ft. from W. Line

	0			

Location -----

Rig up -----

Drilling and Remarks:

609 250 lbs.

RECORD

Cased 1868 in., 1899 ft.  
Sand  
Gas  
Oil  
Total Depth 1899

PRODUCTION

1st 24 hrs. Nat. -----  
1st 24 hrs. after shot -----  
Gas ----- Cu. Ft.  
Dry Hole -----  
Abandoned -----

Date

FEB 24 1926 CHAS. L. SHERWOOD  
192 Scout

Greenwood Co  
Map No. KANSAS Sec. 4 Twp. 22 R. 12  
Well No. 1 Frank Houston Unit 1  
2.5 Simmons et al Company

SECTION PLAT

200 Ft. from N. Line  
5264 Ft. from S. Line  
H20 3786 Ft. from E. Line  
Ft. from W. Line

	0			

CORRECTION

Location -----

Rig up -----

Drilling and Remarks:

"Machine"

Bigging up.  
at location  
to show

RECORD

Cased ----- in., ----- ft.  
Sand -----  
Gas -----  
Oil -----  
Total Depth -----

PRODUCTION

1st 24 hrs. Nat. -----  
1st 24 hrs. after shot -----  
Gas ----- Cu. Ft.  
Dry Hole -----  
Abandoned -----

Date

DEC 3 1925 CHAS. L. SHERWOOD  
192 Scout

*Herwood Co*

Map No. *271* KANSAS Sec. *4* Twp. *22* R. *12*

Well No. *1* *Frank Houston Unit 1*

*2-15* *Ammon & Co* Company

Contractor

FIRST REPORTS

SECTION PLAT

*750* Ft. from N. Line  
*52664* Ft. from S. Line  
*750* *3786* Ft. from E. Line  
Ft. from W. Line

		o	
MID-Cont			

Location   
Rig up  
Drilling and Remarks:

RECORD

Cased \_\_\_\_\_ in., \_\_\_\_\_ ft.  
Sand \_\_\_\_\_  
Gas \_\_\_\_\_  
Oil \_\_\_\_\_  
Total Depth \_\_\_\_\_

PRODUCTION

1st 24 hrs. Nat. \_\_\_\_\_  
1st 24 hrs. after shot \_\_\_\_\_  
Gas \_\_\_\_\_ Cu. Ft.  
Dry Hole \_\_\_\_\_  
Abandoned \_\_\_\_\_

Date  
NOV 19 1925

CHAS. L. SHERWOOD  
Scout