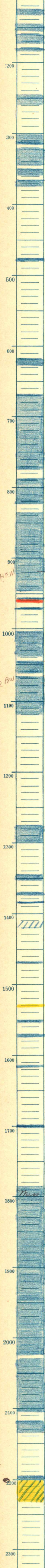
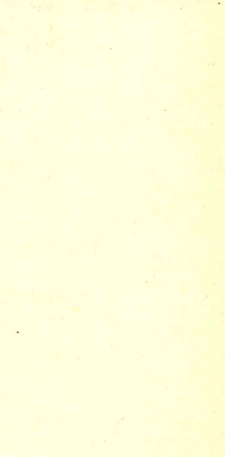


Kans. S. 13 T. 22 S., R. 13 E.
 Greenwood County
 Montgomery et al. Company
 Meyers #1 Farm
 T.D. 2235
 1153

Pro - Dry
 Relation by
 Drilled 1/20 - 3/12/25 J.B.



623 - 5 BW.
 700 - 2 PW.
 920 - HFW.
 1068
 1075 - 2 PW.
 2119
 2136
 2196 Good show oil 2200
 2200
 2233
 35 - T.D.