



OILFIELD RESEARCH LABORATORIES

536 NORTH HIGHLAND - CHANUTE, KANSAS 66720 - PHONE (316) 431-2650

October 5, 1983

Lincoln 77
3633 O Street, Suite 4
P. O. Box 30538
Lincoln, Nebraska 68510

Gentlemen:

Enclosed herewith are the results of tests run on the rotary core taken from the Edwards 'B' Lease, Well No. 6, located in Coffey County, Kansas.

The core was sampled and sealed in plastic bags by a representative of the client and submitted to our laboratory on September 30, 1983.

Your business is greatly appreciated.

Very truly yours,

OILFIELD RESEARCH LABORATORIES

Sanford A. Michel

SAM/rmc

4 c to Lincoln, Nebraska
1 c to Topeka, Kansas

Oilfield Research Laboratories
GENERAL INFORMATION & SUMMARY

Company Lincoln 77 Lease Edwards 'B' Well No. 6
 Location 2310' NSL & 330' WEL, SE $\frac{1}{4}$
 Section 17 Twp. 22S Rge. 16E County Coffey State Kansas

Elevation, Feet
 Name of Sand Lower Squirrel
 Top of Core 1015.0
 Bottom of Core 1018.1
 Top of Sand 1015.9
 Bottom of Sand 1018.1
 Total Feet of Permeable Sand 2.2

Distribution of Permeable Sand: Permeability Range Millidarcys	Feet	Cum. Ft.
0 - 10	0.6	0.6
10 - 20	0.3	0.9
20 - 30	1.3	2.2

Average Permeability Millidarcys 18.5
 Average Percent Porosity 14.6
 Average Percent Oil Saturation 62.5
 Average Percent Water Saturation 26.5
 Average Oil Content, Bbbls. / A. Ft. 705.
 Total Oil Content, Bbbls. / Acre 1,552.

LOGCompany Lincoln 77 Lease Edwards 'B' Well No. 6

<u>Depth Interval, Feet</u>	<u>Description</u>
1015.3 - 1015.9	Gray calcareous fossiliferous shale.
1015.9 - 1016.5	Brownish black slightly calcareous slightly carbonaceous slightly shaly sandstone with scattered gray shale partings.
1016.5 - 1016.8	Brownish black slightly calcareous slightly carbonaceous sandstone.
1016.8 - 1017.5	Brownish black slightly carbonaceous sandstone with scattered gray shale partings.
1017.5 - 1018.1	Brownish black slightly calcareous slightly carbonaceous sandstone with scattered gray shale partings.

Oilfield Research Laboratories

RESULTS OF SATURATION & PERMEABILITY TESTS

TABLE I-B

Company Lincoln 77 Lease Edwards 'B' Well No. 6

Sample No.	Depth, Feet	Effective Porosity Percent	Percent Saturation			Oil Content Bbls. / A Ft.	Perm., Mill.	Feet of Sand		Total Oil Content	Perm. Capacity Ft. X md.
			Oil	Water	Total			Ft.	Cum. Ft.		
1	1016.3	14.3	69	25	94	766	9.3	0.6	0.6	460	5.58
2	1016.7	15.6	64	25	89	775	14.	0.3	0.9	233	4.20
3	1017.2	14.9	49	34	83	566	21.	0.7	1.6	396	14.70
4	1017.8	14.0	71	20	91	771	27.	0.6	2.2	463	16.20

Oilfield Research Laboratories

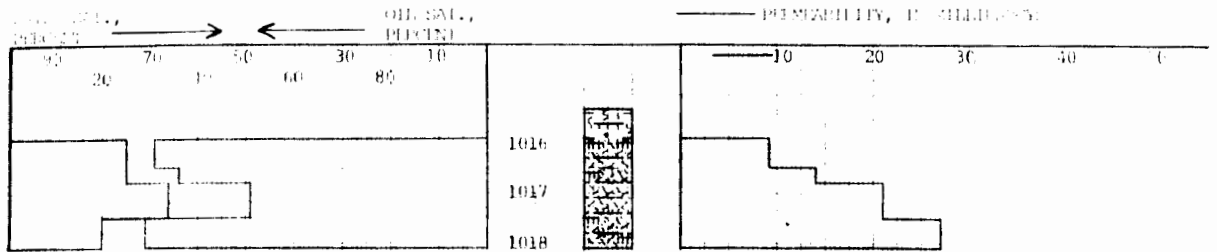
SUMMARY OF PERMEABILITY & SATURATION TESTS

TABLE III

Company Lincoln 77 Lease Edwards 'B' Well No. 6

Depth Interval, Feet	Feet of Core Analyzed	Average Permeability, Millidarcys	Permeability Capacity Fl. x Md.
1015.9 - 1018.1	2.2	18.5	40.68

Depth Interval, Feet	Feet of Core Analyzed	Average Percent Porosity	Average Percent Water Saturation	Average Percent Oil Saturation	Average Oil Content Bbl./A. Ft.	Total Oil Content Bbls./Acre
1015.9 - 1018.1	2.2	14.6	62.5	705	1,552	



KEY:



CALCAREOUS FOSSILIFEROUS SHALE



CALCAREOUS CARBONACEOUS SANDSTONE



SHALY CALCAREOUS CARBONACEOUS SANDSTONE WITH SHALE PARTINGS



CARBONACEOUS SANDSTONE WITH SHALE PARTINGS



CALCAREOUS CARBONACEOUS SANDSTONE WITH SHALE PARTINGS

LINCOLN 77

TRACIES "B" LEASE

COPPEY COUNTY, KANSAS

WELL NO. 6

DEPTH INTERVAL, FEET	FEET OF CORE ANALYZED	AVERAGE PERCENT POROSITY	AVG. OIL SATURATION PERCENT	AVG. WATER SATURATION PERCENT	AVERAGE PERMEABILITY, MILLIDARCY
1015.9 - 1018.1	2.2	14.6	62.5	26.5	18.5

OILFIELD RESEARCH LABORATORIES
 CHANUTE, KANSAS
 OCTOBER, 1983 RAL

Lincoln 77, Inc.

2

ND, D3

Edwards "B" #6 • API # 15-031-21,435
2310 NSL # 330 WEL SE $\frac{1}{4}$ or NENESE Sec 17, T22S-R16E
Coffey County, Kansas 9/30/83
LOWER SQUIRREL CORED 1014-1034 (Full Recovery)
Boxed 1015.13-1018.3 (1 Box) X-M log & CA