

COPY

13-22-19E

GEOLOGICAL REPORT

Tri-Star Drilling, Inc.

Miller #1

Approx. 2940' FSL, 200' FEL

Section 13-T22S-R19E

Anderson County, Kansas

COMMENCED: 11/15/91

STATUS: N/A

COMPLETED: 11/19/91

API NO.: 15-003-23,568

CONTRACTOR: Tri-Star

OPER. LIC.: 30551

SIZE HOLE: 7 7/8"

FIELD: Unnamed

SURFACE PIPE: 8 5/8" @ 22'

ELEVATION: Topo.

CEMENTED WITH: 15 sx

GL: 1163

LONG STRING: N/A

KB: 1169

CEMENTED WITH: N/A

RTD: 1255

LOGS RUN: None

Lost circulation at 1252-1255.

MUD SYSTEM: Native

GEOLOGICAL CONSULTING

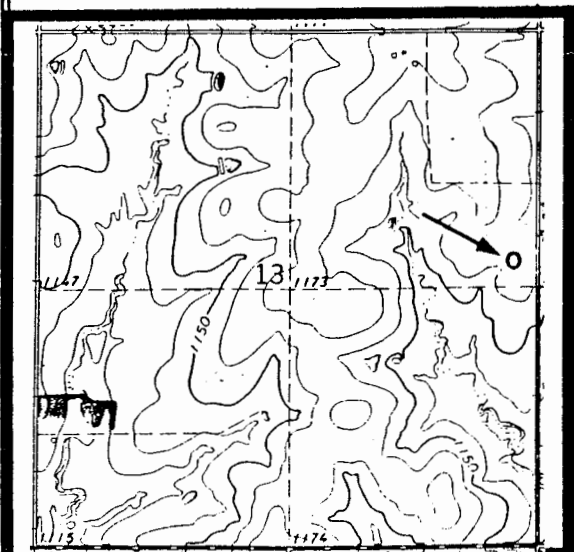
Rex R. Ashlock

Petroleum Geologist

1135 S. Summit

El Dorado, KS 67042

(316) 321-9520



STATE OF KANSAS

MAR 17 1992

CONSERVATION

13-22-19E

COPY

File copy

November 22, 1991

Tri-Star Drilling, Inc.
R. R. #1
Madison, Kansas 66860

Re: Miller #1
2940'FSL, 200'FEL
Section 13-T22S-R19E
Anderson County, Kansas

Dear Sir:

The following report on the subject well is based on microscopic examination of rotary cuttings from 700' to a rotary total depth of 1255'. All measurements were taken from the Kelly Bushing which was located 6' above ground level and estimated at 1169'. The following sample tops were picked:

Weiser Sand	684	+485
Base Weiser Sand	711	+458
Pawnee	740	+429
Cherokee	837	+332
Squirrel Zone	842	+327
Ardmore	922	+247
Cattlemen Zone	928	+241
Bartlesville Zone	1024	+145
Bartlesville Sand	1106	+63
Burgess Sand	1193	-24
Mississippi	1214	-45
Mississippi Dolomite	1222	-53
RTD	1255	-86

MAR 17 1992

MAJOR ZONES OF INTEREST

Weiser Sand. 700-711. Sandstone, white, fine grained, sub-rounded to sub-angular, well sorted, unconsolidated, good to very good intergranular porosity, poor to fair fluorescence in part, fair to good odor, fair to good show of free oil collected on inside of zip-lock plastic bag. NOTE: The upper section of the Weiser Sand was not collected therefore a geologic evaluation of this area can not be determined at this time. It should be noted that even though the bottom section carried a show of free oil, the sand appeared to be very watery.

COPY

Squirrel Zone. No sand development.

Cattlemen Zone. No true sand development.

Bartlesville Sand. 1106-1112. Sandstone, white, fine to medium grained, sub-angular to very angular, well sorted, well consolidated, friable, fair to good intergranular porosity, no show.

1112-1115. Sandstone, as above, with intermittent shale and silty shale lenses, no show.

Burgess Sand. 1193-1195. Sandstone, white, clear, light tan, medium to very coarse grained, sub-rounded to very angular, with recrystalline sand in part, moderately to very well sorted, loose to poorly consolidated, very poor to fair intergranular porosity, no show.

1195-1206. Sandstone, as above, with scattered tan clusters, pyritic in part, trace aquamarine shale, no odor, no fluorescence, scattered patchy to speckled staining, no show of free oil.

Mississippi. 1214-1216. Chert, off-white, cream, white, blocky, sharp, trace tripolitic, poor with trace fair fractured and leached porosity, no show.

1216-1222. Limestone, tan, light gray, trace dark tan, very fine to medium crystalline, dolomitic in part, trace chert, scattered dull fluorescence, no show.

1222-1227. Dolomite, light tan, dark cream, sucrosic, fair to good intercrystalline porosity, trace chert, no odor, fair fluorescence, no show of free oil, did not merit further testing.

1227-1230. Dolomite, as above, with a little darker tan, no show.

1230-1236. Dolomite, tan, dark tan, "limey" in part, very fine to fine crystalline, trace white sharp chert, poor porosity, no show.

1236-1240. Dolomite, dark tan, very fine to fine crystalline, abundant mottled off white - tan cherts, fair crystalline and good fractured porosity, no odor, dull scattered fluorescence, no show of free oil.

1240-1246. Dolomite, tan, dark tan, micro to fine crystalline, very poor to poor crystalline porosity, with fractured chert as above, no show.

13-22-19E


COPY

NOTE: Due to the loss circulation zone from 1252-1254 no samples were recovered for 1246-1255.

SUMMARY

Due to the lack of commercial oil shows in the Cherokee and Mississippi formations in which Tri-Star was primarily interested in, the subject well was sold to another company which will test the show of oil in the shallow Weiser Sand.

Sincerely,



Rex R. Ashlock
Petroleum Geologist