

S. 25 T. 22 S., R. 12 E.

Greenwood County

Empire Company

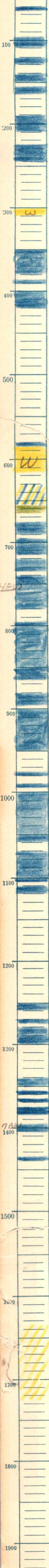
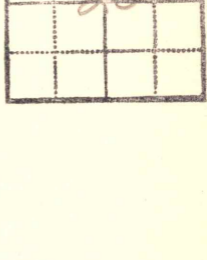
Ott 9-A Farm

I.P. 150 bbls T.D. 1724

1105

ation by

drilled 5-4 to 5-25-28



1395-1405

1435-40

1633

1st oil 1659

best pay 1659/1707

1707

1724 T.D.