

S. 26 T. 22 S., R. 12 W. E.

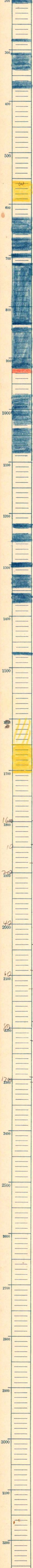
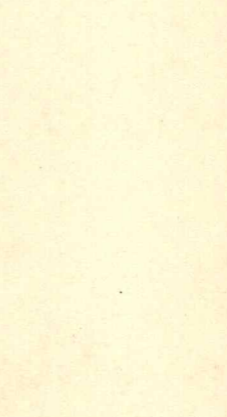
Greenwood County

Empire Company

Old # 1-B Farm

I.P. 160 Wells T.D. 1705  
1062

Relation by \_\_\_\_\_  
drilled \_\_\_\_\_



1600 1st show oil 1600-09

1648

1705 T.D.

1602 netted  
any qty 1/10 m m

10 1/10 show 1616

20 1900 sdy sh & sdy sh  
& silty sh

40 2000 any qty 1/5 to 3/4  
lamin cement  
some round pebbles

60 2100 do few 2 to 3 m m

80 2200 any qty 1/5 - 1 m m  
many gra up to 3 m m  
sand, rounded  
bl. detrital ls. over ls. piece  
10 m m. conglomerate  
coal piece 2 m m.

1705 2300 1/5 to 1 m m any.  
may sand  
do but more ls.

do but many round  
1/2 to 1