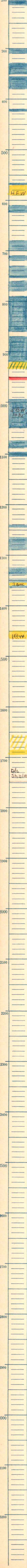


Kans. S. 29 T. 22 S., R. 13 E.
 Greenwood County
 Zimmerman Rhodes Company
 Luthi #4 Farm
 1108 T.D. 1749
 I.P. 40 lbs.
 Shot 40

Drilled 2-25-29 to 3-20-29
 Mark



1240 - 45

1265

1290

1325

1330(?)

1345

1355

1360-65

1450

1465

1657

1687

1697 Plugged back to 1699

1749 - T. D.

Dlc Shale

1749 - T. D.

1749 - T. D.

1749 - T. D.

1749 - T. D.

1749 - T. D.

1749 - T. D.

1749 - T. D.