

UNION NATIONAL BANK BLDG, WICHITA, KANSAS

Location SE NW SE.

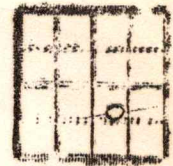
Sec. 29 T. 22 R. 13E

Casing Record

20" 10" 1030
 15 1/8" 8 1/4" 1612
 12 1/2" 65/8" 1707
 12 1/8" 53/16"

Farm- S. Blanck
 Company- The Texas Co.
 Contr.- G. W. Hinkle.
 Comm.- 5/16/30.

County- Greenwood.
 No. 2



Total Depth 1860'.

Shot 100 Quarts Between 1717-1743' Comp.- 6/29/30.

Correspondence Regarding This Well Should Be Referred to

Elevation 1194
 Initial Production Dry.

Figures Indicate Bottom of Formations.

Date Issued. 7/26/1930.

Formation	Depth	Formation	Depth
lime gray hrd	3	shale blue sft	1031
clay yellow sft	10	lime white hrd	1032
mud blue sft	25	shale blue sft	1037
lime gray hrd	30	red bed red sft	1042
shale blue sft	75	shale blue sft	1065
lime white hrd	125	lime white hrd	1075
shale blue sft	130	shale blue sft	1080
lime gray hrd	135	lime gray hrd	1140
shale blue sft	140	shale blue sft	1145
sand gray sft	145	1 BW 1098-1105'	
shale blue sft	160	lime blue hrd	1150
lime gray hrd	165	shale blue sdy	1155
shale blue sft	170	lime gray sft (1 BW 1155-	1170)
lime gray hrd	173	shale blue sft	1325
shale blue sft	180	lime gray hrd	1330
red bed red sft	190	shale blue sft	1335
shale blue sft	195	lime gray hrd	1340
lime gray hrd	200	shale white sft	1350
shale lgt sft	210	lime white hrd	1375
lime gray hrd	220	shale lgt sft	1377
shale blue sft	230	lime white hrd	1385
lime gray hrd	238	shale sdy gray sft	1420
shale blue sft	245	lime gray hrd	1430
lime shells gray hrd	265	shale blue sft	1440
shale blue sft	290	lime gray hrd	1450
lime white hrd	300	shale drk sft	1475
shale blue sft	305	3 BW 1450-1460'	
lime gray hrd	320	shale sdy gray sft	1515
shale blue sft	390	lime gray hrd	1518
lime white hrd	395	shale sdy sft	1565
shale gray sft	415	shale blue sft	1570
lime gray hrd	435	shale sdy hrd	1580
shale blue sft	442	shale lgt sft	1640
lime white hrd	450	2 BW 1580-1585'	
shale blue sft	465	shale drk sft	1707
lime white hrd	470	sand gray sft	1744
shale lgt sft	510	1st oil at 1722'	
lime gray hrd	520	shale gray sft	1810
shale lgt sft	535	shale drk sft	1835
shale gray sft	615	lime (Miss.) gray hrd	1850
shale blue sft	663	S.T. L. M. gray hrd	1860
lime gray hrd	666	T.D.	1860
sand water white	690	2 BW 1855'	
HFV 675'		Hole full water 1860'	
shale blue sft	692		
sand white	705		
shale blue sft	765		
lime white hrd	795		
shale blue sft	800		
lime white hrd	810		
shale blue sft	815		
lime white hrd	860		
shale blue sft	875		
lime white hrd	985		
water sand white	1010		
lime gray hrd	1017		
HFV 985-995'			
shale blue sft	1021		
lime white hrd	1027		

Base 100