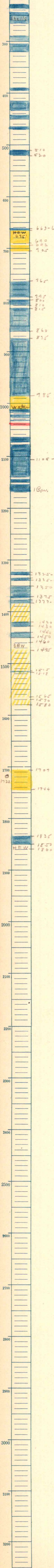


No. S 29 T. 22 S., R. 13 E.  
 Greenwood County  
 Devas Co. Company  
 J. Blanche #2 Farm  
 1193 T.D. 1860  
 Dr. 100 gals. 1717-43

Drilled by \_\_\_\_\_  
 Drilled 5-16-30 to 6-29-30  
 M.S.



100  
 200  
 shells  
 300  
 400  
 500  
 510  
 520  
 600  
 663-666  
 Hew  
 675  
 690  
 692  
 705  
 700  
 765  
 795  
 800  
 810  
 815  
 800  
 860  
 875  
 900  
 985  
 Water  
 1100  
 1105 - 1B.W.  
 1B.W.  
 1200  
 1300  
 1325-30  
 1335-40  
 1350  
 1375  
 1377-1385  
 1400  
 1420  
 1430  
 1440  
 1450  
 1460  
 3BW  
 1475  
 1500  
 1515  
 1518  
 1565  
 1570  
 1580  
 1600  
 1700  
 1707  
 1722  
 1744  
 1800  
 1835  
 1850  
 HFW  
 1860 T.D. S.L.M.  
 1900  
 2000  
 2100  
 2200  
 2300  
 2400  
 2500  
 2600  
 2700  
 2800  
 2900  
 3000  
 3100  
 3200