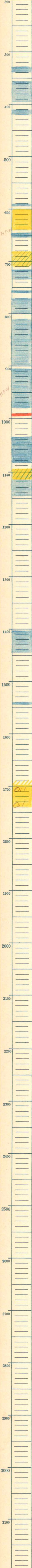


Kans. S. 30 T. 22 S., R. 13 E.  
 Greenwood County  
 Tidal Oil Company  
 Schuab #3 Farm  
 1114 T.D. 1744

Relation by \_\_\_\_\_  
 drilled 2/29 - 3/14/22 JTB



610 - HFW

680 - 700

810 - 3 BW

945 H.F.W.

1412

1445

1540-45

1690  
97

Log Bm  
 gives 1740  
 as base of sand  
 and 1740-44 as  
 shale.